

Public Auction Register

SAT MAY 5 - 11 AM Public Auction of Valuable Farm Machinery and Milk Equipment Located off Rt 74 at Brouge, turn on to Lucky Rd across from the store Proceed to the 1st hard road on the left Go approx 1 1/2 miles to stop sign Straight through approx 2 blocks to sale OR from New Bridgeville go south on Rt 425 to the second hard road on right Proceed approx 1/2 mile to sale Watch for sale signs Larry Eddinger, Owner Melvin Haines, & Ralph Brennehan, Auctioneers

SAT MAY 5 - 10:30 AM Public Consignment Auction of New and Used Farm Tractors and Machinery Located on the corners of Rt 38 and 38B, Newark Valley, NY, Binghamton-Owego Area Goodrich Auction Service, Inc., Auctioneers

SAT MAY 5 - 9 AM Consignment Sale of farm machinery and garden equipment Located at Mason-Dixon Auto Auction 12876 Molly Pitcher Highway, Greencastle, PA Sale by Mason Dixon Auto Auction Mayhugh, Mayhugh, Rockwell and Wildeson, Auctioneers

SAT MAY 5 - 10:30 PM Public Sale of real estate, farm equipment and household goods Located Cumberland Co., PA - approx 2 miles south of Newville From Newville take Rt 233 North to Bowmans Hardware, turn left onto Green St Follow to sale Sale signs posted day of sale Don and Sharon Peters, Owners Lamar and Melvin Sensing, Auctioneers

SAT MAY 5 - 10 AM Public Auction of 81 acre farm, modern farm machinery, tractors, guns, coins, household items, etc Located on farm 5 miles NW of Jersey Shore, PA 1 1/2 miles E of Woolrich along Dutch Hollow Road. Auction arrows off Rt. 220 at Pine Creek Exit (Rt. 44) or at Woolrich Patricia Ergott, Owner Fraley Auction Co., Auctioneer.

SAT MAY 5 - Public Auction of Feeder Cattle, Load of Hardware & Load of Fresh Produce Located at Port Treuerton, RD 1 Aaron Brubaker, Owner Bryan D Imes, Auctioneer

SAT MAY 5 - 9 AM Public Auction of 3 Properties A Complete Liquidation of Metal Working Shop & Equipment, 3 Trucks, Forklift, Etc Located east of Lebanon in Village of Prescott, Lebanon Co., PA Ivan Martin, Owner Sylvan Witmer, Auctioneer

BONNIE BRAE AUCTION
SPRING MOWER AND INDUSTRIAL EQUIPMENT SALE

SAT., MAY 12, 1984
9 A.M.

Consignments now being accepted for this sale. Call for special commission rates on large equipment.

Rt. 724
Spring City, Pa.
Richard J. Moyer
Auctioneer - AU 642L
948-8050

PUBLIC FARM SALE

THURSDAY, APRIL 26, 1984
10:30 A.M.

To be held 2 1/2 miles so. West of Thompsontown, Pa. along Jonestown Road.

Due to the fatal farm accident of the late Clyde D. Moyer, his widow will offer at Public Sale the following well cared for MODERN FARM MACHINERY. Much was purchased in last three years.

I-H 986 tractor w/Cab-air-1244 hrs; I-H 784 Diesel tractor w/114 hrs. new in Sept 83; I-H 720 Semi Mt. 4-18 auto reset plow; MF 11 ft. transport disc; 12 ft. Pittsburg harrow; Brillion 11 ft. Cultipacker; Brillion 10 ft. seeder packer #SS1210; White 4 row air planter w/no-till attachment, dry Fert. w/ auger fill; used 2 sessions; Case 1537 Skid steer; NH 519 manure spreader w/Hyd. gate; NH 489 haybine; NH 258 Rake w/rubber mt. teeth; N.H. 315 baler w/#70 thrower; Grove bale wagon; N.H. 36 ft. Elevator w/motor; 2 Gravity wagons; Gehl 3 pt. Round bale mower; New I-H 830 forage harvester w/3-30 in. Corn Head, Hay pickup; I-H 56 Blower; Portable V8 Ford Power unit; Badger 3 beater Forage box on 6 wheel gear; NH 33 Crop chopper; Chev. 1/2 ton pickup (farm license); Forney welder; Sears 4 H.P. portable air compressor; ANTIQUE - 1939 Chev. Coupe. There are very few small items. Be on time this is an unusual opportunity to buy really good farm machinery.

Terms - Cash or approved Pa. Checks only.

Furnish-I.D. for number

Owner and Auctioneer not responsible for accidents.

Owner,
PHYLLIS E. MOYER
R.D. 1 Box 183
Thompsontown, Pa. 17094
717-535-5815

Earl W. Eash Auctioneer
Pa. License & Bonded #AU-000244-L
717-966-2569

LUNCH

PUBLIC SALE

OF 2 ACRE REAL ESTATE WITH
GREENHOUSE, MECHANIC TOOLS,
PICKUP & TRACTOR

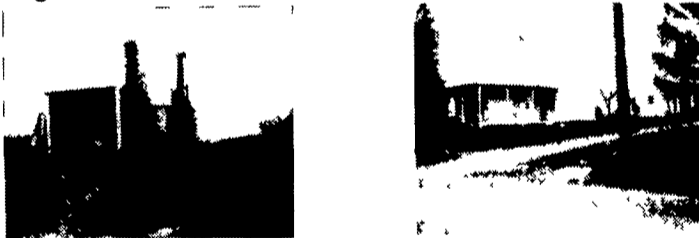
SATURDAY, MAY 12, 1984
SALE TIME 11:00 A.M.

Located Along Rt. 23 In The Village Of Goodville. Two Miles East Of Blue Ball, 7 Miles West Of Morgantown, East Earl Twp., Lanc. Co., PA.

A certain tract of land consisting of 2 acres plus. Erected thereon a:

2 1/2 STORY FRAME DWELLING

with aluminum siding. Kitchen with built-in cabinet, inlaid linoleum, wash bowl, closet. Dining room with wall-to-wall carpet, closet. Living room with wall-to-wall carpet. Laundry. Half bath. Three bedrooms with carpet. Closet. Full bath with closet, attic storage. Full basement with outside entrance. Porch. Recently insulated. Two year old sewer system. Well with pressure system. Water softener. Oil hot water radiator heat with summer-winter hookup. Shade trees, shrubbery, lawn. Large garden for truck farming.



30'x124' GREENHOUSE with auto., hot air coal furnace.
THREE CAR CEMENT BLOCK GARAGE with grease pit, work bench area, water hydrant, oil hot air furnace.

20'x48' TWO STORY FRAME CHICKEN HOUSE.

OPEN HOUSE: Saturdays, April 28-May 5, 1:00 to 3:00 P.M.

TERMS: 10% down day of sale. Balance on July 12, 1984.

NOTE: This property is an ideal opportunity for a family project.

**REAL ESTATE 1:00 P.M.
PICKUP & TRACTOR**

1978 Dodge Pickup with 8' Bed & Insulated Topper, Ladder Rack, Slant Six Engine, Straight Stick, Radial Tires; FARMALL A TRACTOR with Hyd., Plow, Cultivator; 2 Wheel Utility Trailer; McCormick 5 Mower; Harrow; Sleds; Porch Chairs; Old Kitchen Cabinet with Flour Bin.

MECHANIC TOOLS

Sun 1600 Alternator Bench Tester; Milwaukee Heavy Duty Right Angle Drill & Bits; 15 Ton Hyd. Press, like new; Lincoln 225 Amp. Welder, like new; Portable Cutting Torch Outfit; 2 1/2 Ton Floor Jack; 18" Lathe with Motor, no chuck; Jet 1/2 hp Bench Grinder, like new; Portable Battery Charger; Trucut Armature Growler; Alternator Repair Tools; 4-Car Stands; 5" bench Vise; Metal Shelving; Bolt Bins; Portable Tool Chest; 2 Creepers; Come-Along; Conduit Bender; New Starter & Alternator Parts; 2 Water Heaters, one gas; Platform Scale; Chatillon 200 lb. Scale; Pipe Fittings; New Great States 18" Reel Type Mower; Oil Cans; Grease Gun; Kerosene Heater; Solder Gun; Scrap Iron; Misc. Shop Tools.

17,000 B.T.U. OIL HOT AIR FURNACE ideal for greenhouse; WINCO 7 K.W. AUTO. SWITCH GEAR L.P. GAS GENERATOR; 6'x8' Roadside Stand with open front & shelves; 4'x8' Produce Display Shelf; Lot of Misc. Greenhouse Supplies.

Not Responsible for Accidents
No out of State Checks

SALE FOR:
LEVI E. WEAVER
215-445-7674

AUCTS.:
NEVIN Z. MARTIN
LEWIS B. GROFF

Lunch Served by Ephrata Mennonite School

PUBLIC SALE

FRIDAY, APRIL 27, 1984
11:00 A.M.

Located at the residence of Earl R. Newswanger, turn off Route 164, South at Fredericksburg, Pa., Blair Co.

Farm Machinery: JD 3010 diesel tractor w/wide front end and steel wheels, pair of 38 rims, Same Carsaro 70 tractor w/4-wheel drive & 900 hrs., set of rims to fit same tractor (9x24 front & 12x30 rear), Ford 311 4-row cornplanter, New Idea haybine, JD bin wagon, MF 33-15 disc drill, 24-foot NH elevator, Tandem New Idea 218 spreader, Fox 546 forage harvester, Woodsbrothers single row cornpicker, Ford 530 baler for parts, JD 115 chuck wagon, flat-bed wagon, wagon w/hayracks, 3-section lever harrow, 10-foot double Brillion cultipacker, Pittsburgh 16-foot field cultivators, IH hayrake, Brady pulverizer, 2 JD No. 10 side-mounted mowers (1 for parts), 42 new free stalls, Surge 22 milker pump w/1 1/2 H.P. Stewart cow clippers, 3 Bodmin New milker units, 9 plywood calf huts, small tools, & Misc.

TERMS: CASH

Lunch & Bake Sale

EARL R. NEWSWANGER, Owner

John J. Dilling, Auctioneer

Not Responsible for Accidents

ANNUAL MACHINERY AUCTION

SATURDAY, APRIL 28th at 9:00 A.M.

Located at Troy Fairgrounds



TRACTORS: White 4-150 w/cab & air; White 2-105 D w/cab & air; White 2-85 D w/cab; 1410 Case D; 806 Int.; Deutz 100-06 D w/cab; Case 500; Oliver 1950T, w/f; 9N Ford; 330 Owatonna skid-steer; Oliver 880 w/f; 1800 Oliver D w/f; 430 JD; 706 Int. w/f; 1750 Oliver w/f; 1850 Oliver D w/f; 770 Oliver; MH 30; (2) 1655 D Olivers; Leyland 255; 901 Ford & Loader; 165 MF, D; 4010 JD.

LAWN & GARDEN: New White 1155; Craftsman; Ford LT80; 308 Snapper; Squire Applegate.

PLOWS: 4340 Oliver; (2) 575 Olivers, 5-btm reset; 344 Oliver trip, 3-btm; Case 3-btm; MF 4-btm trip; JD 350 5-btm, reset; Ford 3-btm. trip; 3x14 trip; (2) Olivers 5-btm. trip; Case 4-btm trailer; 4240 Oliver trailer; MF 880 4x16 reset; Keveland 3-btm auto reset.

DRAGS & DISCS: New Knowles 12' & 16'; 251 White transport; 2-row cult.; Kewanee 15' transport; JD 10' transport; Int. 3-pt 12' harrow; JD 12' harrow; Int. 15 16' transport drag; new 283 White 17' drag; 283 Oliver transport 20'; Noble 8-shank chisel (Demo); AC cult; Case 20' Stine drag.

HARVESTERS: 780 AC, 2 hds; JD pick up hd; 350 Int. 2 hds; CT 300 Gehl, 2 hds; CB600 Gehl, elec. sharpener, 2 hds; Gehl FC72B flail; S717 NH late model, 2 hds; pick up hd for Papec 35-32.

BLOWERS: NH 23; 26 NH; New 99 Gehl.

FORAGE BOXES: Int. 51; Gehl 610; Grove; Int. Box; Gehl Bu85; Gehl Bu910; Lamco.

Other: M C D. grain binder; AC 66 combine; Gehl blender box.

MOWERS & HAYBINES: JD #5; NI trailer, JD 1209; NI 279; 461 NH; 469 NH; 2-880 Gehl; Ford mower; 290 NI;

RAKES & TEDDERS: 258 NH; Grimm basket; Grimm 4-star; 2 IH; IH #30 whl.; NH 55; NI; 2-J.D.

BALERS: New 1600 Gehl round; NH 269 w/thrower; NH 5-67 w/thrower; Gehl 1500 A round; JD 24T w/thrower; MF #12 w/thrower; NH 270 w/thrower; NH 268 w/thrower; MF #10; Int. 45; NH w/thrower; NH 65 w/thrower; NH 68 w/thrower.

ELEVATORS: Cross 22'; new Little giant 24'; new 16' Smalley.

HAY BOXES: flatdeck wgn; 6 throw boxes & gears (2 new);

CORN PLANTERS, SEEDERS, DRILLS: 455 Int. 4-r; Ont. late model; Int. 56 4-r; Brillion 10' seeder (only seeded 100 acres); Int. 56 6-r DD.; JD 490 w/bugs 4-r; JD 11 disc drill.

SPREADERS: Gehl 250 bu. hyd. end gate (nice); 180 bu. Hawk tank; new 2195 Hawk Built 207 bu. tank.

OTHER EQUIPMENT & MISC. ITEMS: Year-round cab for Int; new Oliver & JD roll guard; new 3-pt 7' blade; Gehl RC800 recutter; 157 Hawk tank spreader; 6' stock tank; 2 pr. Int. r. wts.; 150 locust posts; 300 gal field sprayer; 6' rotary cutter; new 3-pt fert. spreader; new 20" Amer. wood splitter; new 16' gates; new Peaque 3-pto buzz saw; new 1784 bu corn crib; new McCurdy gravity box; new round bale feeders: like new 2-r. cult.; Oliver front & rear whl. wts. fit all models; Oliver 3-pt cult; truck mounted crane; large bolt bin; 560 Badger barn cleaner unit (12 mo. old) Winco 20,000 Kwt. alt. w/pto & cart; truckload new tools; drinking cups & interted U tie stalls; Int. 2001 front loader; 727 Ford hyd. front loader; NI front loader; Surge milker pump; 6 new 11L x 15" flotation 8 ply tires; 18.4 x 38 tires for duals; Coleman tow-behind camper;

ESTATE CONSIGNMENT: SAWS: Craftsman table 10' w/base & whls, 27" top, various blades, 1 h. mtr.; Craftsman radial arm saw 10", base & whls. (like new); Craftsman jig saw 3"x18"; Proven sabre saw, 3 amp, w/blade kit; B & D skill saw 7/4, 1 h. mtr.; Craftsman bench & radial molding set, head & 18 cutters; Craftsman 6" jointer w/36" length; Craftsman 36" lathe; Craftsman router, 1 h commercial (like new). Craftsman 20" tool box, 4 drawer w/3 drawer top rack; drills, pipe cutters & all hand tools, benches & cabinets, all in excellent cond.

SALE ORDER: New tools 9:00, Estate consignment of woodworking tools, followed by machinery. 3 door prizes at end of sale — must be present to win.

SALE MANAGED & SOLD BY
ROBERT M. SHAYLOR SALES

Bob Shaylor AU833-1
717-297-3278
Bob Garrison
717-297-3873 or 2991



Robert M. Shaylor Sales
515 Elmira St., Troy, Pa. - 717-297-3278
Reputable Sales Service
Licensed — Bonded

For Lift On Site For Loading & Unloading