

DISPERSAL SALE

DATE MAY 19, 1984

Of Largest Herd of Milking Shorthorns in State of PA. Three Springs Farm has Produced more all American Milking Shorthorns than any other breeder in the United States. Once in life time opportunity to purchase milking shorthorn cattle of this quality; Do not miss this sale.

For Catalogs write Mr. Jim Young
Box 162, RD 1 Newville, Pa. 17241
Or Call 717-776-7234

Sale HDQ University Lodge Shippensburg Pa. Among animals selling is 3 Springs Bo. Twice all American and nominate for Junior 2 year old All American, This Young Cow will be sold!

MR. & MRS. JAMES YOUNG

Box 162 RD1
Newville, Pa. 17241

Public Auction Register

Closing Date - Monday, 5 00 P M
of each week's publication

SAT APRIL 21 - 1 PM
Public Auction of Club Pig
and Lamb Sale Located
at the Carlisle Livestock
Market, Carlisle, PA

and Shepherd's Crook
Ken Brubaker, Auc-
tioneer

SAT APRIL 21 - 9 AM
Public Auction of Real

Estate, Antiques, Collec-
tibles, Guns, Household &
Misc Items Located ap-
prox 1 1/2 miles south of
Dalmatia, PA along Rt
147 Virginia M & Blair A
Rhoads, Owners Dockey,
Dockey & Deppen, Auc-
tioneers

SAT APRIL 21 - 12 30 PM
Public Auction of the 17th
Annual Feeder Steer Sale
Located 12 miles west of
York, PA, 1/4 mile east of

East Berlin, PA along Rt
234 at Beaver Creek
Stock Farm C L Jacobs
and Barry L Jacobs,
Owners Clair R
Slaybaugh, Auctioneer

SAT APRIL 21 - 1 PM
Public Auction of the 1st
Anniversary Dairy Sale
Located in Northwestern,
PA, 2 miles north of Spr-
ing Creek, PA on Blue
Eye Rd., or 7 miles east of

Corry, PA on US 6, then 2
miles south on Blue Eye
Rd Watch for sale signs
Mickey & Ed Sekerak,
Owners Ronald Reed,
Auctioneer

SAT APRIL 21 Public
Consignment Sale of Farm
Related Items Located at
1690 Waggoners, Gap
Rd, Carlisle, PA 17013
Wickard Bros, Owners
Phone 243-1018

RESCHEDULED LARGE FARM EQUIPMENT AUCTION

For Charles G. Summers, Jr.
Canning Co.

Rescheduled Thurs. Apr. 19, 1984
at 9:30 A.M.

Located at 50 East High St., New
Freedom, Pa. Approx. 3 miles west of Exit
1 of Rt. 83 via Rt. 851 west.

Full line of John Deere farm machinery.
Anyone desiring additional information on any
of the farm machinery may call the office at
717-235-3821.

CHARLES G. SUMMERS, JR., INC.
New Freedom, PA.

Bob & Tom Sechrist,
Auctioneers

COLONIAL CHAROLAIS SPRING SALE

SATURDAY, APRIL 21

12 Noon

at the Fairgrounds-Frederick, Maryland

55 LOTS

21 CHAROLAIS BULLS
34 SELECT FEMALES

Always the best selection of bulls in the breed, Ready for service. Fully
guaranteed. Eligible for shipment anywhere.

The females are foundation quality. Start a herd or upgrade your present
herd. Show heifers for Junior projects.

For Catalogs:

Sale Manager,
BUZZ GAREY

Box C, 100 Walnut Lane,
Morrisville, Pa. 19067
(215) 295-6664

PUBLIC AUCTION

OF FARM MACHINERY
SATURDAY, APRIL 21, 1984

Time 10:00 A.M.

Directions - South Prospect Rd. from
Salunga 2 miles turn right on to Siegrist
Rd. West from Lanc. on Rt. 23, turn right
on to Prospect Rd. at Farmdale School,
turn left on Siegrist Rd.

Massey Ferguson 275 diesel fully equip. (760
hrs.); 530 John Deere fully equip. classic; Two
(2) John Deere 'B' Cyclones, One (1) with
cultivators; John Deere 'B' 39 Crank; Oliver
'66' Cultivator & Tobacco Hoers; Massey
Ferguson, 3-bottom plow (Trip); John Deere 28
disc, John Deere offset disc; New Idea manure
spreader (PTO); 12 disc grain drill; John Deere 3-
section spring harrow; 3-point International
Grass Mower (pitless); Brilliant, 9 ft.
Cultipacker; Two (2) land rollers - one (1)
'Mountville'; 300 gal. water wagon w/portable
pump; Hershey two (2) row tobacco planter; 8
tobacco wagons on rubber; 6 wooden wheels; 3
Florin pot belly stoves (No. 116); Lincoln 225
(AC) Welder; Air compressor 1/2 HP; Fair-
banks scale; Minich tobacco press; 10,000
tobacco lath; Tobacco spears, tobacco shears;
wagon load of miscellaneous articles.

Lunch Available

Auction by:

ROY H. SIEGRIST

RD 3 Box 751
Mt. Joy, PA 17552

Auctioneer
C.H. Wolgemuth
Ph. 665-5664
Lic. #1036-L

PUBLIC SALE

OF 53 ACRES M/L FARM

Ephrata Township

THURSDAY, APRIL 19, 1984

Sale Time 2:00 P.M.

Located along Hahnstown Rd., Ephrata
Township, Lancaster Co., Pa.

Directions: Rt. 322-222 Interchange -
turn east onto Rt. 322 approx. 1/2 block
turn left onto Hahnstown Rd. drive
approx. 1 mile. Farm on right.

53 ACRES M/L FARM

Frame Bank Barn with attached tobacco
shed & straw shed.

Stream in meadow. Several acres of
woodland area. Approx. 47 tillable acres.

Farm in high state of productivity. Located
in the "heart" of Lancaster Farm County.

For inspection or information call 733-3597 or
733-4914.

Terms by:

MARY S. MILLER ESTATE

C. Gehman Miller,
Kathryn M. Sweigart, Executors

T. Glenn Horst, Auct. (717-859-1331)

Timothy G. Horst, Auct. (717-738-1245)

George Morgan, Atty.

1st ANNIVERSARY DAIRY SALE

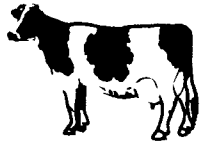
on the farm in Northwestern Pa.

45 REGISTERED & GRADE HOLSTEINS
Registered Heifer Calves

SATURDAY, APRIL 21, 1984

Starting at 1 P.M.

Mostly registered 1st and 2nd
calf Canadian springers from
Ontario with records and high
butterfat test.



Farm located 2 miles North of Spring Creek, Pa. on Blue Eye Road, or 7
miles East of Corry, Pa. on U.S. 6, then 2 miles South on Blue Eye Road
(blacktop road). Watch for sale signs.

Sale starts promptly at 1 P.M. Not responsible for accidents. All cattle
tested for interstate. Trucking available.

TERMS—Cash or good check.

MICKEY & ED SEKERAK,

Corry, Pa. Owners
(814) 664-8804 or 664-2365

Auctioneer - Ronald Reed

Pedigrees - Ransom Riedel, Jr.

NOTE - Sale to be held in our recently completed Sales Arena
Free Lunch to All Buyers

PUBLIC SALE

NEW INVENTORY REDUCTION
PETERSHEIM'S STORE

SATURDAY, MAY 5, 1984

10:00 A.M.

Located in Lancaster Co., PA, 6 miles
southeast of Strasburg at the in-
tersection of White Oak Road and Old
Dam Road. From Rt. 896 go east on
White Oak Road.

INVENTORY TO BE SOLD

Pendulum wall clocks; alarm clocks; step
ladders, all sizes; cedar chests; Corelle dish
sets and odds and end dishes, Moon & Star,
etc.; sets and odd pieces silver flatware; kit-
chen utensils; cups & saucers; table cloths,
towels; wash cloths; pillow cases, sheets -
spreads; all kinds of thread; braided and
hooked rugs; bed pillows; stainless steel
pearing and steak knives; sewing boxes; couch
covers; 5 buckle boots, shoes, ice skates, un-
derwear, gloves, all sizes; wrapping paper;
waste cans; bag handles, hot pad loops; mug
trees, stove pipe; sponges; picnic supplies,
tools; all kinds of shovels, racks, large ther-
mometers; carpet & linoleum remnants; baby
afghans; watches; hand painted glass; beetle
traps; hack saw blades; mechanic & carpenter
tools boxes; sugar; Petersheim Family Tree
books; platform scales; miscellaneous items.

Store closed on auction day.

Bring chairs. Plenty of sitting room.

Owners:

MELVIN & REBECCA

Auctioneer: **PETERSHEIM**

Steve Petersheim:

717-786-4624

Lic. #AU-001349-L

Food By Bart Ladies Auxiliary

PUBLIC SALE

HOUSEHOLD GOODS — ANTIQUES

FRIDAY, APRIL 27, 1984

7:00 P.M.

Sale to be held in the village of In-
tercourse, PA at the Fire House.

HOUSEHOLD GOODS & ANTIQUES

Solid wood bureau; cherry dresser w/wooden
pulls; blanket chest; single bed w/box spring &
mattress; sewing machine, electric Phaff,
sewing notions; metal wardrobe; 2 sewing
cabinets; sofa bed; rocking chair; 2 easy
chairs; 2 can seated chairs; dishes & silver-
ware; blender; portable mixer; 2 electric fans;
electric heater; blankets & pillows; bed linens;
bed warmer & heating pad; electric wringer
wash machine; wash tub, galvanized bucket;
jars; garden tools; small upright freezer;
small hot plate; cooking ware; braided oval
rugs, 1 large; electric iron; sad irons; lamps;
baskets; books; hassocks; step stools; wooden
ironing board; antique shelf clock; old sale
bill; old coins - silver dollars 1889-1921, half
dollars 1837-1858 w/eagle, 1792 foreign coin,
1819 one cent.

Goods can be seen Friday P.M.

Estate of:

AMELIA F. LAPP

Executors: Arthur Smoker
& Christian L. King

Auctioneer:

Steve Petersheim:

717-786-4624

Lic. #AU-001349-L

Food by the Ladies Auxiliary

JULIA M. LAPP'S CANCELLED

Corry, Pa. and Susan S. Hackett

FOR SALE - AT FARM - PRIVATE TREATY:

35 JERSEY HEIFERS — most registered, 2 mo. to 18 mo., sired by top
A.I. bulls: Top Brass, Shadewell Fascinator, Soldier Boy, Brave Soldier,
Milkhoney General, selling as a group of individually as springers. Dams
to over 15,000M, many over 12,000M., BF to 5.8.

2 yrl. reg. Jersey bulls, one Magic of Ogston out of 17,100 lb. Mileston
Generator daughter, one Favorite Saint out of Chocolate Soldier daughter.

800 gal. Mueller bulk tank, 3 1/2 yrs. remaining guarantee w/2 used 2 HP
compressors, \$7500; 5 DeLaval bucket milkers (4 40#, 1 50#), w/DeLaval or
Surge claws avail., w/Surge elec. puls., \$250 and \$350; Surge Alamo 100
vac. pump, used 18 mo., \$1750; balance tank, \$250; A.O. Smith 80 gal. hot
water tank, used 18 mo., \$225; 350' 2" plastic vac. line, 50' 3# plastic vac.
line; 64 tie stalls, \$1250

Bender dump station w/2 strainers, large rec. jar, elec. dryer, \$300;
double SS wash sink w/brackets, \$110; Surge elec. puls. control, \$270; 35
stall cocks, \$550; brackets, wiring; elec. fans w/thermos., 30" \$300, 36"
\$340. 38 Humane plastic water bowls w/fittings, used 18 mo., \$975; feed
cart, \$85, silage cart, \$100 25 calf starter stalls, \$150 ea.

Equipment for sale: JD 60 NF, 3 pt. H, new disks in clutch & PTO, \$1250;
300 bu. silage mixer w/factory rebuilt elec. scale, flotation tires, In-
ternational (by Arts Way), \$6000; Gibson oat crusher, corn cracker w/1 HP
220 motor, \$250; 3x16" 3 pt. H heavy beam trip btm. plow, \$650; 3x14" Case
trailer plow (hyd. lift), new pts. & mold boards, \$225; 3 sect. 10' John Deere
drag harrow, \$150; MF 14' disk, \$850; 32' 250 gal. trailer sprayer, brass
screens, nozzles, PTO pump used once, new regulator, never used \$700;
Forage Harvester, Ford 612, 2 r. corn, grass, pick up, 5' direct cut \$500

NH 469 haybine, new wobble gear 1yr., \$1800; JD 495A 4R plate corn
planter w/insect. hopp., XL shape, \$1250; Ford 530 baler w/thrower, \$1800;
3 pt H Vicon fert./seeder spreader used twice \$250; 185 bu. Farm Hand
manure spread, 3 btr. \$450; 185 bu. Hawkbill rt. hand unloader manure
spread \$450; 75 A. farm, high state of production, 2 mi. from town on
major highway, bldgs. XL condition.

Columbia Co.

717-784-9458