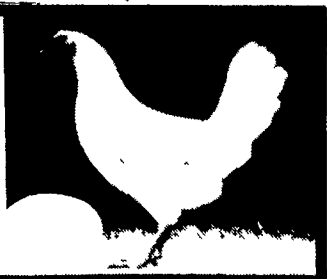


POULTRY MARKETS



Weekly New York Egg Market

From Friday, March 30 to Thursday, April 5
Fri. Mon. Tues. Wed. Thurs.

WHITE					
Jumbo	1.05	1.06	1.08	1.10	1.13
Ex Large	1.04	1.05	1.07	1.09	1.12
Large	1.03	1.04	1.06	1.08	1.11
Mediums	.98	.98	1.00	1.01	1.04
Pullets	.77	.77	.78	.78	.79
Off Grade	.94	.95	.97	.99	1.01

BROWN					
Jumbo	—	—	—	—	—
Ex Large	1.07	1.08	1.09	1.09	1.12
Large	1.05	1.06	1.07	1.08	1.11
Mediums	.97	.97	.98	.98	1.00
Pullets	Unquoted				
Peewees	Unquoted				

Off Grade					
Undergrades	.69	.70	.71	.71	.71
Checks	.67	.68	.69	.69	.69

Breaking Stock: Friday - 21.90-22.50, 22.20-22.80; Monday - 22.20-22.80, 22.50-23.10; Tuesday - 22.80-23.40, 23.10-23.40.

Nest Run Eggs

Prices are from Egg Clearinghouse, Inc., (ECI) Durham, N.H. and reflect trading prices for gradable nest run eggs (GNR) on ECI, a nationwide trading center for producers, packers and marketers. GNR eggs are classified by weight in 30-dozen cases, and traded in lots of either 300 or 750 cases. Prices are FOB buyers dock, and are computed Tuesday and Thursday of each week. This week's prices for each classification were:

Classification		DATE April 3 Tuesday	DATE April 5 Thursday
Class 1 - Large	48 lbs.	1.00½	1.03
Class 2 - Large	45 lbs.	.95	.95
Class 3 - Medium	42 lbs.	.84	.87
Class 4 - Small	39 lbs.	.73	.73
Breaking Stock	48 lbs.	.82	.82
Checks	48 lbs.	.75	.75

N.E. Weekly Shell Egg Report

Tuesday, March 27

Report supplied by USDA

Prices paid per dozen Grade "A" Brown eggs in cartons delivered to retail stores:

	Ex. Large	Large	Medium	Small
MASS.X	1.18-1.20	1.17-1.19	1.07-1.09	.84-.86
Mostly	1.18	1.17	1.07	.84
N. HAMP.	1.09-1.13	1.10-1.12	.97-1.01	.73-.77
Mostly	1.11-1.12	1.10-1.11	.99-1.00	.75-.76
R.I.	1.05-1.14	1.04-1.13	.96-1.02	.73-.79
Mostly	1.05-1.10	1.04-1.09	.96-.98	.73-.75
VERMONT	1.15-1.20	1.10-1.15	1.00-1.10	—
Mostly	1.20	1.15	1.10	—
MAINE	1.16-1.18	1.15-1.17	1.04-1.07	.80-.84

X Includes Central and Western Sections only.

Philadelphia Eggs

Thursday, April 5

Report supplied by USDA

MARKET COMMENT: Prices unchanged to higher. Cartoned egg movement remains fair overall; however, spotty retail features generally good orders. Nest run trading is very limited as stocks are tight and firmly held in most all quarters. However, the buying interest for ungraded remains active and mostly filled unless the buyer is willing to pay on premium.

Floor stocks are heavy in preparation of the holidays, but many dealers are still willing to add to their inventories. Undertone firm.

Prices to retailers: sales to volume buyers, consumer grades white eggs in cartons delivered store door:

A Extra Large .96-1.05; A Large .95-1.04; A Medium .89-.97.

New York Multiple Drop Broiler Report

Thursday, April 5

Report supplied by USDA

Current broiler/fryer negotiated prices for immediate delivery includes mostly multiple-drop shipments to New York City from Delmarva.

RANGE: U.S. Grade A .57-.62; Weighted AVG.: U.S. Grade A 60.91; Premium (X) Boxes 10,113. (X) Includes special services, selected competitive brands, etc.

Delmarva Poultry

Thursday, April 5

Report supplied by USDA

Market Comment: Movement on RTC whole birds was improved today. While the demand ranged from fair to good, there was still some product available in spots. Movement on parts has also picked up with wings and cutlets the best movers.

Slaughter schedules remain moderately heavy. Live supplied are adequate at your regular weights. Undertone steady.

Today's L.T.L. asking prices are unchanged on U.S. Grade A at 57-62 cents.

Estimated slaughter of broiler fryers in Delmarva (000).

Estimated 4/5 1,937; Actual 3/29 1,814; Actual 4/3 1,930; Average Weights 4/3 4.32; Average Weights 3/27 4.24.

Perhaps We Made It
Too Simple?



The
Exact,
Efficient
And Easy Way To Make
Your Own Feed.



automatic
farm
systems

608 Evergreen Rd.
Lebanon, PA 17042
(717) 274-5333

Lebanon Valley

Livestock

Fredericksburg, Pa.

Tuesday, April 3

Report supplied by PDA

CATTLE 244: Compared with last Tuesday's market, slaughter steers & holsteins uneven. Slaughter cows .50-1.50 lower. Few High Choice & Prime Yield Grade 2-4 103-1235 lbs. slaughter steers 63.85-66.60, Choice 58.00-60.60, few 54.60. Few Good & Choice 56.00-60.25, few 63.50. Standard 50.00-57.75, few Utility 42.75-47.00. Choice Yield grade slaughter heifers 2-4 925-1265 lbs. 58.50-65.00, one at 67.85, Good 52.25-57.85, Standard 46.00-53.75. Breaking Utility & Commercial slaughter cows 43.35-44.85, few 46.60, Cutter & Boning Utility 40.50-43.60, few 44.85, Canner & Low Cutter 35.00-40.85, one at 49.00, few to 41.60, Shells down to 25.25-35.00, few down to 19.50. Few Standard slaughter bullocks 48.00-50.10. Few Yield Grade #1 1180-1660 lbs. slaughter bulls 50.00-56.00.

CALVES 187: Two Choice Vealers 85.00 & 89.00, few Good 71.00-88.00. Standard & Good 90-125 lbs. 59.00-65.00, few down to 56.00; 65-85 lbs. 50.00-59.00, few down to 47.00, few Utility 55-100 lbs. 39.00-46.00.

FARM CALVES: Holstein Bulls 90-125 lbs. 74.00-101.00, mostly 80-91.00. Holstein Heifers 85-110 lbs. 58.00-63.00.

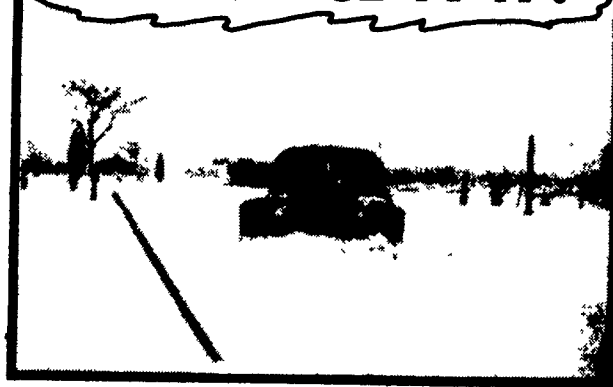
HOGS 133: Barrows & gilts steady to 1.00 lower on small supply. US No. 1-2 215-265 lbs. barrows & gilts 48.25-49.10, 11 head 240-250 lbs. 49.85-50.50, No. 1-3 220-240 lbs. 47.75-48.10, few No. 2-3 215-255 lbs. 46.00-47.35, No. 1-3 145-200 lbs. 42.50-45.00. Sows: US No. 1-3 280-625 lbs. Sows 40.00-45.50, one at 47.00, No. 2-3 300-565 lbs. 35.00-43.00, few Medium 250-360 lbs. 30.00-32.50. Few Boars 28.00-29.00.

FEEDER PIGS 6.

SHEEP 15: High Choice & Prime 50-55 lbs. Spring slaughter lambs 80.00-87.00, few Choice 100-120 lbs. Woolled slaughter lambs 50.00-54.00.



WE'VE COME A LONG
WAY SINCE 1947!



The customer who received that first delivery of Moyer's Chicks in January 1947 was, no doubt, unimpressed with the delivery vehicle. Six boxes of baby chicks in the back seat of a 1941 Oldsmobile Sedan was indeed a humble beginning!

More impressive was Moyer's determination to make the delivery on time and with a minimum of stress. The first challenge was digging through the snowdrifts in front of the hatchery!

Today Moyer's is no less determined to meet the industry's challenges of large volumes of chicks hatched and delivered with minimal stress. Now Moyer's hatches more in one day than the sum total of 68,000 for the first whole year in 1947.

Deliveries of up to 50,000 chicks per load are made comfortably year round in Moyer's climate-controlled vans.

Yes, we've come a long way, and our sights are set on the bright new challenging horizon of the future.

Moyer's CHICKS, INC.

DEKALB
BROWN & WHITE
EGG LAYERS

Quakertown, PA 18951
(215) 536-3155

HUBBARD
WHITE MT.
BROILERS

Copyright 1984 by Lancaster Farming
P.O. Box 366 - Lititz, PA 17543
Office: 22 E. Main St., Lititz, PA 17543
Record-Express Office Building
Phone: Lancaster 717-394-3047
or Lititz 717-626-1164

Robert G. Campbell, Publisher
Dick Anglestein, Editor
Suzanne Keene, Home Editor
Jack Hubley, Associate Editor
Laura England, Associate Editor

NEWS CORRESPONDENTS

Patty Gross, Bedford, Blair, Huntingdon counties
Martinsburg 814-793-4256

Robin Phillips, Berks County
Mohrsville 215-926-1261

Jane Bresee, Bradford County
Ulster 717-358-3346

Beth Hemminger, Cumberland, Franklin
and Perry counties
Newville 717-486-5322

Sally B. Bair, Lancaster County
Columbia

Joyce Bupp, York County
Seven Valleys

Nancy Kunick, Crawford & surrounding counties
Centerville 814-694-2571

Subscription Price:
\$7.50 per year; \$13.00 - 2 years
\$14.00 per year outside of
PA, NJ, MD, DE, NY, VA & WV

Established November 4, 1955
Published every Saturday
by Lancaster Farming, Lititz, PA
Second Class Postage paid at
22 E. Main St.
Lititz, PA 17543 ISSN0023 7485

For address change form or new
subscription see Mailbox Markets
Members of Newspaper Farm Editors Assn.,
Pa. Newspaper Publishers Association,
and National Newspaper Association.
Represented Nationally by
J.L. Farmakis, Inc.
#203-966-1746