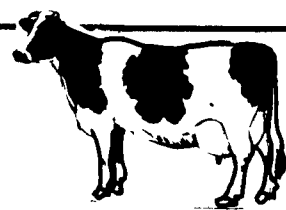


Public Auction RegisterClosing Date Monday 5 00 P M
of each week's publication

of Ephrata to traffic light at Hinkletown Turn left to Martindale Turn left on Grist Mill Rd Business on right Lawn Care of PA Daniel Z Martin & Son Owners Kline & Kreider Auctioneers

SAT APRIL 21 9 30 AM
Public Auction of Valuable Farm Machinery, Anti

Located on Rt. 22 at the ONO dinner, turn north onto Lincoln Sch Rd Come to stop sign & turn left on Awol Rd Watch for auction signs Sylvester & Helen Rohrer, Owners Michael R Fortna, Auctioneer

SAT APRIL 21 9 AM
Public Auction of Real Estate, Farm Implements Livestock Antiques, Tools, Etc Located at RD 2 Annville, PA From Rt 22 at the ONO dinner, turn north onto Lincoln Sch Rd Come to stop sign & turn left on Awol Rd Watch for auction signs Sylvester & Helen Rohrer, Owners Michael R Fortna, Auctioneer**NEW HOLLAND SALES STABLES, Inc.
DAIRY SALE**

New Holland, Pa.

WEDNESDAY, APRIL 11, 1984**SPECIAL CONSIGNMENTS****HERD OF 41 HEAD, ALL VACCINATED**

Included in this herd are 21 Registered Jerseys, 20 Grade Holstein Cows, Fresh and Springers. Balance in all stages.

Consigned by
H.D. MATZ**CONNECTICUT GRADE HERD OF 35 HEAD**

All Home Raised, Eastern Bred. 8 recently fresh, some milking 80 lbs. per day. Balance due July, Aug, Sept, Oct.

Consigned by
JOHN PEILA**BUTLER COUNTY HERD OF 55 HEAD**

Fresh and Springers, balance due July, Aug., Sept. Cows averaging 55 lbs. milk per day, 4.0% T.

Consigned by
KELLY BOWSER

*****ALSO*****

1 Load Purebred and Grade Canadian Cows, fresh and springers, consigned by Leroy Smucker.

1 Load Purebred and Grade Canadian Cows fresh and springers, consigned by Kelly Bowser.

1 Load fresh and springer cows consigned by Merle Breneman.

1 Load fresh and springer cows consigned by Marvin Eshleman.

1 Load fresh cows consigned by Alfred Albright.

1 Load fresh and springer cows consigned by Raymond Smucker.

PUBLIC SALE

Located in York, Co.; Take Route #116, 3 miles West of Spring Grove or 4 miles East of Hanover, Pa. then turn South 1 mile to Porter Sideling, then East on to Porter Sideling Road, Sale signs posted.

SATURDAY, APRIL 14, 1984

at 10:00 A.M.

FARM EQUIPMENT, LAWN EQUIPMENT**60 HEAD BLACK ANGUS AND HOLSTEIN HEIFERS
2 MONTHS TO 700 LB.****2 BLACK ANGUS COWS WITH CALVES;****3 BLACK ANGUS HEIFERS BRED;****1 BLACK ANGUS BREEDING BULL****APPROX. 1400 LB: PONEY (GELDING)****FARM EQUIPMENT, ETC.**

John Deere H Tractor with plow and cultivators; John Deere 16" 5-bottom plow; 2 gravity wagons; 6 Ton low boy trailer; N.H. Model 68 Baler with Jector; Fox Forage Harvester; Model IF546 w/corn Head, 8 pickup attachment; New Idea Model 17 Spreader, PTO; air compressor, 3 H.P.; 6' scraper blade; 150 gal Storage tank; 60 gal Fuel Tank for truck; Trailer axle; Manley tow truck hoist; Electric Hydraulic Cylinder for Myers Snow Plow; Honda 5 H.P. Rototiller; Bolen Rotary Mower, 3-pt; 100 Locust Posts (some saved); oak, pine, and walnut boards; 50 Chimney Blocks, 16"x16"; other assorted cement blocks; Ski-doddler snow mobile; Sets of Iron Wheels; 2 cords oak Firewood; 30 pine trees (Blue Spruce and Norway Spruce) Small tools (log chains, floor Jack, Plow Shares) Many Items not mentioned.

Owners,

MR. MYERS & CHARMAINE MYERS

Phone 717-637-7769

Clair R. Slaybaugh, Auctioneer

Phone 677-7479

Pa. Auctioneer's LIC #856

THOMASVILLE
LIVESTOCK MKT. INC.**SPRING
FEEDER SALE
FRIDAY****APRIL, 13, 1984
7 00 P.M.****-200 LOCAL FEEDERS-
Other
Local Consignments
Welcome**Located 6 mi. West
of York on Rt. 30

Contact.

STEVEN GROSS, PRES.**717-266-2828****CHARLES SUNDAY, SEC.****717-764-4321**Regular Sales
Every Wednesday
Starting with Calves
at 7 00**Auction Barn
717-792-2248****PUBLIC SALE**

OF

**REAL ESTATE-ANTIQUES-FARM MACHINERY
ESTATE OF STUART DAHLHEIMER****SATURDAY, MAY 5, 1984**

9:00 A.M.

LOCATED: 9 miles north of Rt. 30 on Bull Rd. - 1 1/2 mile north of Hakes Store on Bull Rd., 2 mi. east of Dover, York County, Pa.**REAL ESTATE 1:00 P.M.****PARCEL #1:** Approx. 10 acres of land w/9 room frame house, large bank barn w/attached corn barn & stone barnyard wall. Approx. 800 ft. road frontage on Bull Rd. & 715 ft. approx. road frontage on Butter Rd. House has full bath on 1st floor, large kitchen, large front porch. Well water, shrubbery & shade trees & small wooded area, located in Conewago Twp., York County, Pa.**PARCEL #2:** Approx. 43 acres in Dover Twp. w/800 ft. frontage on Bull Rd., 4 car garage & attached building, 2 wells & spring with 1 1/2 acres wooded.**PARCEL #3:** Approx. 2 1/2 acres in Conewago Twp., corner of Mill Creek & Butter Rd. w/frontage on Mill Creek of Approx. 350 ft. & on Butter Rd. 280 ft.**PARCEL #4:** Approx. 6 1/2 acres, 940 ft. on Butter Rd. frontage & approx. 350 ft. on Mill Creek, Conewago Twp., 2 1/2 acres cleared, 4 acres wooded.**NOTE: BEING OFFERED IN 4 PARCELS - SUBJECT TO TOWNSHIP APPROVAL.****TERMS: 10% DOWN - BALANCE IN 60 DAYS.****FOR INSPECTION PH. 717-764-3271 or 717-292-1566.****ANTIQUES**

Wood beds, 5 leg oak extension table, youth bed, set of 6 plank bottom chairs, oak chest of drawers, oak high chair, clothes tree, blanket chest, side board, Dow tray, wash stand, Empire dresser, 6 drawer wooden desk & chair; Larkin sewing cabinet, mantle clock, Daisy butter churn, 1 band copper kettle, stands of various sizes, pie boards, 7 piece Water Fall bedroom suite, writing desk, dressers, 2 rope beds, rockers, plank bottom chairs, rainbow carpet, braided rugs, reversable rug & other rugs, egg baskets, baskets, 97 piece Hall china (Autumn Leaf), tea pot, advertising items, Rogers silver, tin & granite ware, goblets, Hull vase, carnival & depression glass, kerosene lamps, Noritake, milk glass, what knots, salt & pepper shakers, mirrors, costume jewelry, comforts, quilts, bedding, old pictures, books, cooking utensils. Singer treddle sewing machine, old clothing-shoes-hats, doilies, bonnets, tin ware & many items too numerous to mention.

G.E. 11.5 cu. ft. refrigerator, G.E. 30" range, G.E. washer & dryer, 22 cu. ft. Kelvinator upright freezer, breakfast set, sofa, platform rocker, air conditioner, wooden boxes, porch rockers, wash boiler, Maytag wringer washer, iron kettle & ring, 1/2 barrel copper kettle, hog troughs, wooden sleds, hog gallows, wheelbarrows, scalding trough, meat grinder, sausage stuffer, hog scrapers, butcher knives, lard cans, butcher pans, crocks of various sizes & more.

1974 Ford Maverick-46,000 mi., 4 dr., auto power steering, 6 cyl.

FARM EQUIPMENT

Farmall 460 gas - 2700 original hrs., Int. 60 3x16 trailer plow, Cult. for 460, tractor mtd wood saw, McCormick semi mtd mower, Ontario 13 Disk Drill, J.D. 28 Blade Disk, 3 Section Harrow, New Idea 12A Spreader, Smoker 24 ft. elevator w/electric motor, Grove wagon w/Grain sides, Land Roller, wheelbarrow seeder, 2 hole corn sheller (Mountville), platform scales, Wards 8 hp mower & snow blower, hydraulic cylinder.

Potato plow, 1 horse culti., iron gate, wooden culti handles, feed boxes, misc. lumber, bag truck, burlap bags, tool box for gas engine, single & double trees, 11x38 tire chains, grind stone, cradle, rope, nuts & bolts, chain, garden tools & many items not mentioned.

TERMS: CASH OR GOOD CHECK.**AUCTIONEER: Blaine N. Rentzel
Emigsville, Pa.**

Ph.: 717-266-1671

717-764-6412

Pa. Auctioneer's Lic. #761

**Estate of Stuart Dahlheimer
Executors: Raymond Dahlheimer
717-764-3271****Clark Dahlheimer**

717-292-1566

Attorney: J. Eugene Stumpf**L.H. JACKSON****PUBLIC AUCTION****REAL ESTATE, TRACTORS, TRUCK,
CAR SHOP TOOLS, FINE ANTIQUES,
GLASSWARE, GUNS****SATURDAY, APRIL 14, 1984**

Starting at 8:30 A.M.

Real Estate at 2:00 P.M.

Directions: Take Route 472 South of Quarryville, PA. Turn on Pumping Station Road.
"Watch for Sale Signs"**Real Estate consists of the following**

2-60 ft. double mushroom houses - concrete block - 3 1/2 acres additional 60 ft.x20 ft. shop and dirt shed with concrete floor. Additional upstairs apartment with 4 rooms, full bath, kitchen, closets, hardwood floors, heated by oil hot water heat with outside balcony. This setting has large mature trees, large cement wharf area for mushroom houses, 2 wells, good roofs.

**Outstanding potential for mushroom growers,
storage buildings, etc.****Machinery**

Coats 10-10 tire changer, 5 H.P. 3 phase tank model air compressor, acetylene torch & stand, extension & step ladders-wooden & alum., Fairbanks platform scales, Forrey welder with helmet & rods, G.E. battery charger, Echo weed trimmer (gasoline), 6 inch pedestal heavy duty bench grinder, 12 inch Power heavy duty shop planer, Armstrong commercial self-feeding hack saw, DeWalt radial arm saw, Beaver table rip saw w/planer, large Hendey shop lathe, upright drill press & drill bits, 4 ton Ajax floor jack, large selection of shop tools-wrenches, etc., portable belt sander, Standard commercial conveyor w/belts, 2-1 1/2 H.P. conveyor motors, anvil, hand planers, brace & bits, pipe wrenches, power saws.

Beaver pipe threading machine, portable cart - G.E. refrigerator (new), wringer type washing machine, Columbus new wall oven, 101 Super Massey-Ferguson Tractor w/boom, buckets & blade, 1966 Plymouth Fury 383 engine-automatic-4 dr.-radio, 24 ft. Fruehauf Trailer, nutre box welding cart. Cast iron hog troughs, chunk stove, dirt rings, 2 elevators, U.S. Army conveyors, manure turner w/5 H.P. motor & rubber web, large iron tank, 2-5 H.P. U.S. Airco & Fedders air conditioners, large roller for paving, 2 wheel chassis trailer, large commercial air conditioner, truck cap, heavy duty commercial portable generator, large metal & wooden work benches, Poulon chain saw, 7 inch Sioux sander, Miller's Falls electric impact wrench, scales (mushroom), antique auto horns.

Pullman shop vac, electric fans, time clock, finishing sander, Whirlpool upright freezer (6-8 years old), brooms, Cooper lawn mower, Gilson rear tine 5 H.P. roto tiller, radiators.

Motors-various H.P. wheelbarrow, 4 electric grindstones-light shop & commercial, Snapper 26 inch riding mower, 42" 10 H.P. Garden Mark riding mower, 1 ton Budget chain hoist, 2 garden tractors Standard Monarch & Planet Jr., 50 gal. stainless steel steam jacked kettle with pour spout. Massey-Ferguson Tractor 1420 hrs, tire chains, 6 ft. snow blade, dirt bucket & manure fork, lumber, electric cook stove, show case, large collection of ceramic items, Enterprise coffee grinder.

TERMS: 10% down day of auction, balance within 30 days.**To inspect Real Estate call:
717-529-2464 or Auction Firm****Attorney:****Joseph J. Lombardo**