

Public Auction Register

Closing Date - Monday, 5:00 P.M.
of each week's publication

SAT APRIL 14 - 8:30 AM
Real Estate at 2 PM L.H. Jackson Public Auction of Real Estate, Tractors, Truck, Car shop tools, fine antiques, glassware, guns Directions - Take Route 472 S of Quarryville, Pa Turn on Pumping Station Road Auction conducted by the J. Omar Landis Auction Service, Jay M. Witman

SAT APRIL 14 - 10 AM
Public Auction of Farm Equipment and Household Goods. Located midway between Akron and Farmersville along W Metzler's Rd., West Earl Twp, Lancaster Co., PA Sylvan Horning, Owner Elton & Rodney Horning, Auctioneers

SAT APRIL 14 - 11 AM
Public Auction of Farm Machinery, 350 Head of Sheep & Household Fixtures Located 40 miles north of Binghamton, 10 miles southeast of Cortland From exit 10 of Rt 81, take Rt. 41 south to village of McGraw Turn

right on Clinton St at the Empire Inn Bear right on McGraw Marathon Rd., 3 miles to farm From exit 9, Rt 81, take Galatia St from the north bound ramp Follow arrows McGraw, NY Roy Teitworth, Inc., Auctioneers

SAT. APRIL 14 - 1 PM
Supreme Club Lamb Sale To be held at the Manheim Community Fairgrounds, Manheim, PA. Ken Brubaker, Auctioneer

MON APRIL 16 - 4 PM
Public Auction of Eastern Lamb and Goat Sale. Located at G and M Livestock Market, Duncansville, PA Sherm Glick, Fred McCartney & Wayne Frederick, Auctioneers

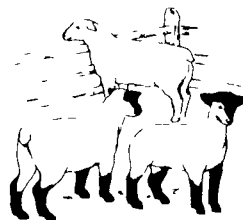
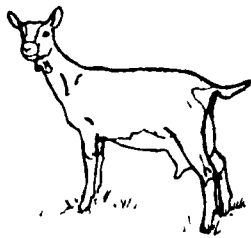
MON APRIL 16 - 11 AM
Public Auction of Surplus Farm Machinery Located 1 mile west of New Oxford, PA Turn south off Rt 30 onto Bon-Ox Rd and go 1 1/2 miles OR from

Bonneville, turn north off Rt 116 onto Bon-Ox Rd and go 3 1/2 miles to sale site Robert C Flickinger, Owner Dennis J Plunkert, Auctioneer

TUES APRIL 17 6 PM
Public Auction of Valuable Real Estate, 2 Acre Farmette Ranch House and 3 Story Block Chicken

House and Large Pond Located 434 Strasburg Pike, West Lampeter Twp, Lanc Co from Rt 30 Go south 2 miles OR from Strasburg go north 2 miles along Strasburg Pike Menno B & Katie S Fisher, Owners Lloyd Kreider, Randal Kline & Roy Good, Auctioneers

TUES APRIL 17 6 PM
complete dispersal of 700 cows and heifers Located at Staunton Union Stock Yards, Inc Staunton, VA East of Staunton on Statler Blvd at the intersection of Rt 254 Holbrook Farms, Owner For information Doug Roper or Clay Hewitt



SPECIAL CONSIGNMENT SALE EASTER LAMB & KID GOAT SALE

ALSO EASTER RABBITS
THURSDAY, APRIL 12, 1984

Rabbits will be sold at 10:00 A.M.
Lambs & Kid Goats at 11:00 A.M. Sharp
Keister's Middleburg Auction Sales, Inc. Rt. 522 3 miles East of Middleburg, Pa. 5 miles west of Selinsgrove, Pa.

For information call: 717-922-1490 or 717-837-2222 or 717-523-0360

Keister's Middleburg Auction Sales, Inc.
Rt. 522 R.D. 3 Middleburg, PA

Owners,
DON & WALT KEISTER

Ray Long & Dave Imes, Auctioneers

Terms: Cash Trucking Available Restaurant Open

RAWLINSVILLE VOLUNTEER FIRE COMPANY 16TH ANNUAL AUCTION

SATURDAY, APRIL 14th

At 9:00 A.M. Sharp

- Farm Equipment
- Riding & Push Mowers
- New and Used Tools
- Building Materials & Supplies
- Household Goods
- Fruit Trees and Shrubbery
- Truck Load of Groceries
- Dry Goods
- Antiques
- Used Vehicles

Items too numerous to mention. Items sold on commission basis and should be in good condition.

For information call: 717-284-2448 or 284-4383

PUBLIC AUCTION

OF 8.81 ACRE PROPERTY
TOOLS & HOUSEHOLD GOODS
SATURDAY, APRIL 14, 1984

AUCTION TIME: 10:30 A.M. REAL ESTATE: 2:00 P.M.
LOCATION: Along Mt. Airy Road between Mt. Airy and Hopeland, Clay Township, Lancaster County, Pa.
DIRECTIONS: Take Route 322 West from Ephrata, approx. 2. miles. In Clay, turn right onto Caly Road to Hopeland. At T in Hopeland turn right, go 1 1/2 miles to property on left.



2 STORY BUNGALOW-TYPE DWELLING

CONTAINING: Eat-in kitchen with built-in cabinets, L-shaped living room with fireplace, small office, 3 bedrooms, 1 1/2 baths; large cement basement; sun porch.

2 CAR GARAGE

- * Frame Tool Shed
- * Cistern w/Pressure System
- * New Hot Air Furnace
- * Macadam Drive
- * Smoke House w/Furnace
- * 2-275 Gal. Oil Tanks

OPEN HOUSE: Inspection at Open House on Saturday, March 31, and April 7, 1984, 12:00 Noon to 3 P.M., or by appointment, call 717-733-8231.

TERMS: 10% Down Day of Auction, Balance at Final Settlement within 30 Days.

R.C.A. WHIRLPOOL REFRIGERATOR,

Frigidaire Electric Stove; G.E. Automatic Washer; 3 Pc. Bedroom Suite; Living Room Suite; DOVETAILED BLANKET CHEST: Cedar Chest; 2 Beds; Box Spring & Mattress; Wooden Benches; Breakfast Set; 2 Kneehole Desks; Small Table; Lamps; Old Quilts; Pine Wood Box; Chest of Drawers; Fans; Baskets; Lawn Furniture; Beveled Mirrors; HEISEY DISH; DEPRESSION PLATES; Pots, Pans & Misc. Household Goods.

REMINGTON SCOREMASTER

22 Rifle with Clip; WEATHER VANE with GLASS BALL & HORSE; A.M.F. Snow Blower; Brunnerville Pump Trough; 3 MAGNESIUM EXTENSION LADDERS: Stepladders; 1/2 Inch Drill; 3 Circular Saws; Sander; McCULLOCH HEDGE TRIMMER; HAHN Self Propelled LAWN MOWER; Bench Vice; McCulloch Chain Saw; Planes; Push Mower; Table Saw; Mud Box; Roof Ladder; Hydraulic Jack; Sledge; Digging Iron; I Beam; Rolls of Wire; Roofing Paper; 2 Wheelbarrows; Motors; Lot of Hatchets; Hammer; Ladder Jacks; Slate Tools; Rakes; Shovels; Brooms; Paint Sprayer; Pipe Threader; Brass Torch; Bench Grinder; Micrometers; Calipers; Gauges; Misc. Hand Tools; and many more items.

AUCTION BY:
ANTONIUS A. KIEHBOOM

Eaby and Eaby, Attorneys
Auction Conducted By:
Paul E. Martin, Auctioneer AU-001601-L
John D. Stauffer, Auctioneer AU-001509-L
717-733-3305 717-665-5099
Ephrata, PA. 17522

FOOD AT AUCTION

PUBLIC SALE

SURPLUS FARM MACHINERY
MONDAY, APRIL 16

at 11:00 A.M.

Located 1 mile West of New Oxford, Pa. turn South off Route 30 onto Bon-Ox Road and go 1 1/2 mile or from Bonneville turn North off Route 116 on to Bon-Ox Road and go 3 1/2 mile to sale site.

J.D. 3010 Gas: NFE: sharp tractor with good rubber, N.H. Super 717 2 row 40 inch corn harvester, J.D. F-125 3 Pt. 3-16 trip bottom plow; Oliver 3-16 bottom trail plow, Case 10 Ft. SP combine, 3-16 Ft. and 1-14 Ft. bale wagons w/wooden sides, N.H. 14 Ft. flat bed wagon w/Hyd. hoist, IH and Kasten chuck wagons, J.D. chuck wagon body, N.I. No. 7 single row corn picker, N.H. PTO manure spreader, J.D. Model N PTO spreader, N.I. 12A manure spreader, 40 Ft. J.D. elev. w/elec. motor, 32 Ft. J.D. elev. w/gas engine, 30 Ft. Alumn, elev, 12 Ft. Pittsburg spring harrow, 2 section lever Harrow, 2-10 Ft. cultipackers, Ontario 16 hoe drill, spike harrow, 3 Pt. 5 Ft. blade, manure loader boom and bucket, 3 milker vacuum pumps, 2 Surge milker pails, stainless steel strainer, generator w/Wisconsin engine, nice old bob-sled, J.D. single hole corn sheller, old single row corn planter, 2 and 4 hole metal hog feeders, kerosene steam jenny, 3 HP elec motor, hog troughs, pile of fireplace wood, approx. 125 bales straw, approx. 200 bales hay, single-double-triple trees and few small items on wagon.

NOTE: A few items consigned by local farmers.

TERMS: Cash or Approved check. No out-of-state checks without bank letter approval, unless known personally.

Inspection Sat. & Sun. before sale.
Not responsible for accidents.

Owners ▶ **ROBERT G. FLICKINGER**
WILLIAM R. SENTZ

624-8036 or 624-4232

Dennis J. Plunkert, Auctioneer

700 Littlestown Road
Littlestown, Pa. 359-4489

AU-001102-L

20th ANNUAL PUBLIC SALE

Starting 9:00 A.M.

SAT., APRIL 21, 1984

Located 3 miles North of Carlisle along Rt. 74.

Will sell the Following:
100 Head of Feeder Cattle

HOLSTEIN, HEREFORD, ANGUS
from 200 lbs. to 800 lbs.

No Consigned Cattle

J.D. A Tractor, Cub Farmall Tractor with mower, and others, Balers, Combines, Manure spreaders, Drag and Transport disc, Lever harrows, 3 point cultivators, 4 bottom I.H. fast hitch plows and others, Elevators, Harvesters, 2 and 4 row corn planters, Pipe Hay wagons and others, Ontario grain drills, Allis C 2 row harvester, Snowmobile, hog feeders, Rotary mowers, J.D. Belt driven corn sheller and bagger. Butcher equipment, poultry equipment, chain saws, chain saws, chain saws, lawn equipment, Pick up loads of small items.

To Be Sold at 1:30 for Cumberland County Nursing Home. The Following:

I.H. 756 gas tractor, I.H. Super A tractor, I.H. #990 Hay bind, I.H. #37 baler w/thrower, Oliver #64 Grain drill, Oliver #568 4-16" bottom spring trip plows, Oliver #543 4 row corn planter, Oliver #251 disc harrow, Oliver leaver harrow, Oliver potato digger, Oliver 1 row potato planter, N.I. #10 corn picker, N.I. 402 roll bar rake, Little giant elevator, 2 Gehl 795 16 feet bale wagons, flat bed wagons, Irrigation system pump, Motor, Pipes and sprinklers, approx. 1000 ft. of pipes, For information on Nursing home items call Blaine Shatto at 243-2103 or 243-2031.

Lunch Stand

WICKARD BROS.

1690 Waggoners Gap Rd.

Carlisle, PA 17013

Phone 243-1018

243-4305

Auct: Robert Mullendore
and local aucts.

Auction

on the premises

Of The Former
ZENITH AUDIO DIVISION
Eighth & Mathew Streets
WATSONTOWN, PA.

To Be Sold

Thursday

APRIL 12th. at 10 A.M.

WOODWORKING MACHINERY

9 - Molders: 2 P Diehl #D68 8" x 4" 5-Hd. (1967); 3 - Mattison 8" x 4" #229 5-Hd. (1967); Mattison 12" x 6" #228 5-Hd. (1967); Mattison 12" x 6" #228 4-Hd. (1963) & 2 - 6" x 4" #276 4-Hd. Oliver #178 36" x 6" Stratoplane (1966) * Whitney 30" x 7" #S-970 Dbl. Surfer (1967) * Yates-American 24" #B24 Dbl. Planer (1968) * 2 - Greenlee 84" #545 D.E. Tenoners * 2 - Greenlee 84" #542 D.E. Trim Saws * Jenkins 128" #191SB Slat-Bed Saw (1972) * 3 - Diehl St. Line Rip Saws * McDonough #54 Band Resaw (1965) * 4 - Root CXH 6' & 5' Mult. Vert. Borers * 2 - Root Mdl. D-200 50" & 50" Mult. Horiz. Borers * 15 - Ekstrom-Carlson #434 Routers * Carborundum 50" Wide Belt Sander * Yates-American 53" 3-Head Wide Belt Sander * 3 - Horiz. Edge Sanders * 12 - Hand Block Sanders * Smith 3-Drum Sander * Cain #900 5-Head V-Groover * Cain Continuous Folding Line * Black Bros. 80" Continuous Vinyl Laminating Line * Autmac #LHBM-4 4-Head Auto. Router *

INDUSTRIAL SHADOWLIGHT RIPPING & CUT-OFF LINE: Tri-State #T332 Mult. Hydr. Rip Saw w/Lumber Handling System, 6 - Cut-Off Saws (New 1967).

Bandsaws * Variety Saws * Jointers * Defect Saws * Bell #24 D.E. Mach. * Corner Block Mach. * Taylor Clamp Carrier (1961) * Weimhoner Shuttle Press * Gine Spreader * Hydr. Baler * 1000 (Est) Towley - Cincinnati Factory Trucks * 3000 (Est) Stacking Pallets * 15 - Fork Lifts * 3 - Ford Tractors * Finishing Systems & Spray Equip. * Mach. Shop * Tooling & Supplies * Particle Board * Etc.

TERMS: Cash or Company Check w/Bank Verification.

INSPECTION: Starting Mon. April 9, 9 A.M. to 4 P.M.

For Free Illustrated Brochure, Contact:

STEPHEN L. Winternitz, Inc

Industrial Auctioneers • Appraisers

444 FRONTAGE RD.

NORTHFIELD, IL 60093 • 312/446-9510

PA. LIC. #AU-001026-L