

## Kuhn reports new mower

VERNON, N.Y. — A heavy duty version has been introduced to the Kuhn line of GMD Multidisc Mowers.

The GMD's, available in cutting widths up to 7 ft. 10 inches wide, are capable of working up to six acres per hour yet have power requirements of only 45 h.p. for even the largest units.

Kuhn Multidisc Mowers feature a series of oval discs that cut cleanly so the crop flows smoothly over the cutterbar and lies in the fluffy swath. Because of its disc and swath-board design, the Kuhn GMC doesn't plug up in dense or wet crops even in areas having fire ant hills. The high speed cutting horn and swathboard also help to

provide a clean break between cut and uncut crop.

Adaptable to various types of terrain, the Kuhn Multidisc Mower has a ground-hugging cutterbar that easily follows contours on rough or hilly ground, and can operate on inclines of up to 40 degrees for limited periods.

The smooth drive and even loading of the GMD is transmitted through helical gears, operating in a permanent oil bath. The oval discs are mounted on splined shafts to maintain perfect knife

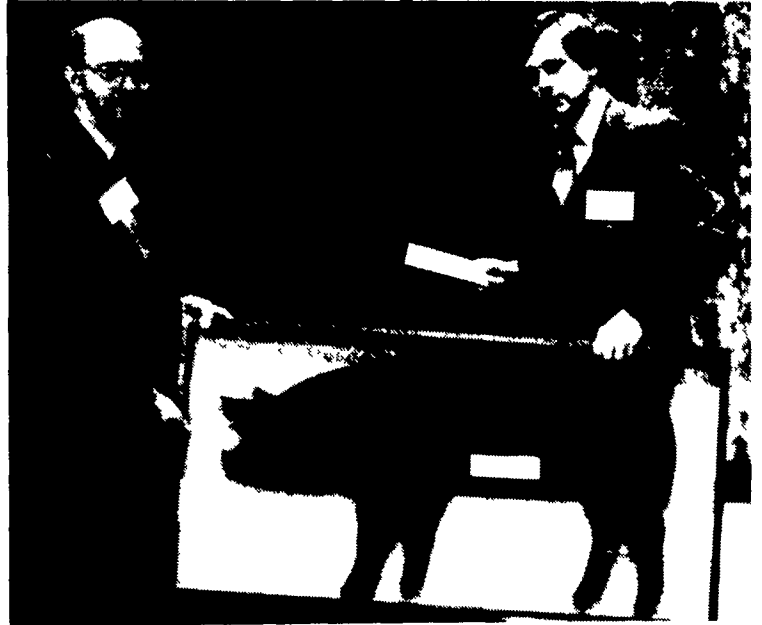
timing. Vibratin is kept to a minimum because two large bearings support each of the disc pinion gears.

Kuhn provides major warehousing at locations throughout the United States and Canada, and also makes available airlift service for replacement parts when required.

Further information on the line of GMC Multidisc Mowers is available from Kuhn Farm Machinery, Inc., P.O. Box 244 - P, Vernon, N.Y. 13476.

The Kuhn GMD Multidisc Mower with high speed oval discs can cut up to six acres of grass or legumes per hour with low power requirements.

## Syntex makes presentation



Rich Shuler, right, Vice President of Marketing for Syntex Agribusiness, Inc., presents a check for \$10,000 and a commemorative plaque of a pig puzzle to Orville Sweet, left, Executive Vice President of the National Pork Producers Council (NPPC) at the American Pork Congress held recently in Kansas City. The puzzle represents piecing together industry, producer and consumer elements for successful pork promotion. The money was raised through the NPPC/Syntex pork promotion checkoff, the first conducted by a pork-related company for the NPPC.

## The COLUMBIAN Air Tight Stove

Columbian Stoves  
Introductory Offer  
**\$250<sup>00</sup>**

All New

Columbian Cook Stove Parts Available

**HIESTAND SUPPLY CO.**

Box 96, Marietta, PA 17547  
(717) 426-1921

**FPPF**

**AUTO/TRUCK DIESEL TREATMENT** totally disperses water.

It eliminates water even better than water separators. It also keeps injectors clean, improves engine efficiency and contains no harmful alcohol.

Use it in every tankful all year 'round.

IT COSTS SO LITTLE TO PROTECT SO MUCH.

Use Auto/Truck Polarized Flow Improver during the wintertime to prevent waxing and gelling.

**DIESEL FUEL INJECTION & TURBO CHARGER SPECIALIST**  
Master Warehouse Distributor

DIESEL TUNE-UP AVAILABLE Call for Appointment

**MILLER DIESEL INC.**

6030 Jonestown Rd., Harrisburg, Pa 17112  
**717-545-5931**  
Interstate 81 Exit 26

# New Case 2094



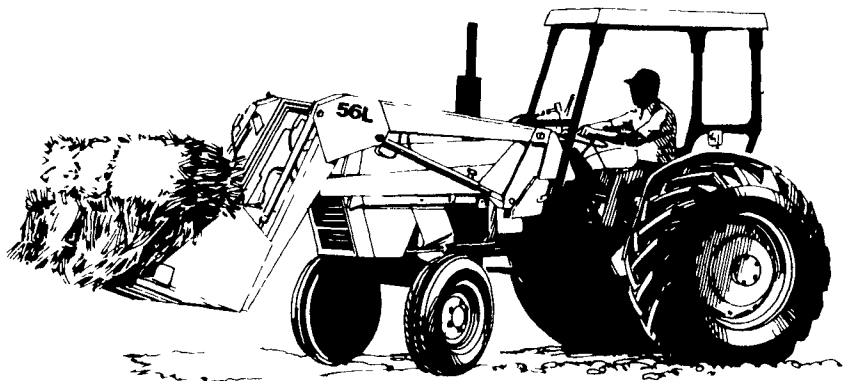
The 110 hp\* (82 kW) tractor designed for today

Your field time is money. A new Case 2094 will make it pay — with new high-tech electronic instrumentation, a new radar option that monitors wheel-slip, new Case deluxe seating comfort, new control placement that makes every move easier, new halogen lighting, new 12-speed electrically actuated range power shift, mechanical front drive option, and many more features from Case, the Tractor Specialist.

**See it. Drive it. Our new Case 2094**

Mfr's PTO rating

# Case human engineered this New 1294



Human engineering means new seating comfort, new operating controls, new lighting, new crop and implement visibility, improved steering and hydraulic control, more productivity with loader or field equipment. More power at 55 hp\* (41 kW). Work-speeding features like diff lock, 12-speed synchromesh transmission, hand and foot throttles. Optional MFD (Mechanical Front Drive). You'll love the way it handles.

**New Case 1294. See it. Drive it. Believe it!**

\*Mfr's PTO rating

**STOFFER BROS., INC.**

1066 Lincoln Way West  
Chambersburg, PA  
(717) 263-8424

**PEOPLES SALES & SERVICE**

Oakland Mills, PA  
(717) 463-2735

**C. H. WALTZ SONS, INC.**

RD1, Cogan Station, PA  
(717) 435-2921

**BINKLEY & HURST BROS.**

133 Rothsville Station Rd  
Lititz, PA  
(717) 626-4705

**ZIMMERMAN'S FARM SERVICE**

Bethel, PA  
(717) 933-4114

**A. L. HERR & BRO.**

312 Park Ave  
Quarryville, PA  
(717) 786-3521

**E. W. BILEWICZ EQUIP., INC.**

Elmer Rd., Richwood, NJ  
(609) 881-2692

**THE WARNER CO.**

"For You The Farmer"  
Troy, PA  
(717) 297-2141

**CASE POWER & EQUIP.**

Montgomeryville, PA  
(215) 699-5871  
New Castle, DE  
(302) 652-3028

**C. & P. FULTZ EQUIP.**

RD 1, Spring Mills, PA  
(814) 422-8805



**PAUL SHOVER'S, INC.**

35 East Willow St  
Carlisle, PA  
(717) 243-2686  
Loysville, Pa  
(717) 789-3117