

YESTERDAY AND TODAY



Still #1 in Tillage Equipment



ARNETT'S GARAGE BURCHFIELDS, INC.

Rt 9, Box 25
Hagerstown, MD
301-733-0515

112 S. Railroad St
Martinsburg, PA 16662
814-793-2194

PAUL M. BYERS, INC.

1700 Edgar Ave
Chambersburg, PA 17201
717-263-8568

NORMAN D. CLARK & SON

Honey Grove, PA
717-734-3682

ELDER SALES & SERVICE

Stoneboro, PA 16153
412-376-3390
376-3740

FARMERSVILLE EQUIPMENT, INC.

RD 4
Ephrata, PA
717-354-4271

FARNSWORTH FARM SUPPLY INC.

103 Cemetery St
Hughesville, PA
717-584-2106

HANDWERK BROS. SERV. CENT.

RD 1 - Neffs
Slatington, PA
215-767-5946

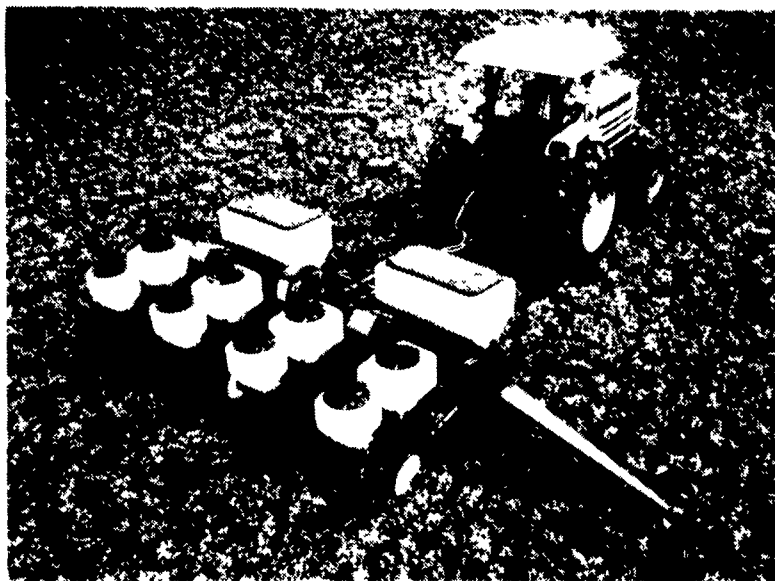
N. G. HERSHEY & SON, INC.

Manheim, PA
717-665-2271

CHAS. J. MCCOMSEY & SONS

Hickory Hill, PA
215-932-2615

If you can find a better planter,
we'd like to see it.



There's a planter sitting on our lot right now that many farmers across the country — and right here in this county — believe to be the most accurate planter on the market today. The 5100 Seed Boss® planter from White Farm Equipment Company.

Accurate seed depth, even spacing. This planter uses our innovative walking beam dual gauge wheel system to put seeds consistently at the depth you select — even in rough ground or varying soil types. And that's especially important in today's reduced tillage seed-beds. Plus its gentle seed metering provides accurate seed spacing and population, not only in corn but also in other rowcrops like soybeans, milo and cotton.

It doesn't cost anything to look.

Drop by our dealership in the next few days and take a look at the Seed Boss. We'll point out its advantages. Answer any questions you have. If you're thinking about a new planter, you owe it to yourself to see the Seed Boss.



OWENS SUPPLY CO., INC.

East Ave & Broad St
Woodstown, NJ 08098
609-769-0308

FRANK RYMON & SONS

State Rt 31 South
Washington, N.J. 07882
201-689-1464

ERNEST SHOVER FARM EQUIPMENT

19 W. South St
Carlisle, PA
717-249-2239

STANLEYS FARM SERVICE

RD 1 - Off Rte 125
Klingerstown, PA
717-648-2088

SHUEY'S SALES SERVICE

Ono, PA
717-865-4915

STOLTZFUS FARM SERVICE

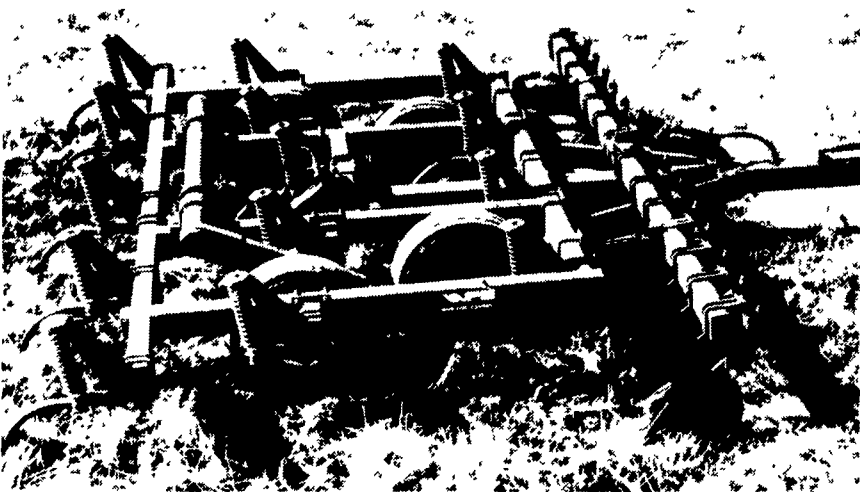
Cochranville, PA
215-593-2407

MILLER EQUIPMENT CO.

RD 1
Bechtelsville, PA
215-845-2911



A new twist in conservation tillage tools



The 435 Conservation Chisel Plow isn't just another disc/chisel. Its design offers a unique twist on conservation tillage. Plus flexibility that other disc/chisels don't offer.

Concave discs up front.

The discs are big 22-inch spherical blades, mounted individually on spring cushion arms. The individual disc mounting lets each disc rise out of the ground to clear rocks, instead of the whole gang.

Depth control of the discs is simple, thanks to the hydraulically controlled tool bar.

A chisel shank every 12 inches.

The long, 90-inch frame of the 435 allows three ranks of chisels spaced 12 inches apart, for trash flow freely between and around the chisels. Plus our spring trip clamp assembly lets chisels clear up to an 11-inch obstruction.

Built strong, in the White Farm tradition.

Big 4"x6"x1/4" steel box beams add working weight and strength. It's heavier than most weight-filled frames.

WHITE DISKS: INDUSTRY LEADERS

Let us show you the difference in disks.



There's a big difference in disks. And if you've never taken the time to really study what makes one disk more productive than the next, drop into our dealership and let us point out a few facts using models from White Farm Equipment Company.

More weight means better disking. Not a revolutionary thought, but there are ways to spot built-in working weight without putting the implement on a scale. One example is massive box beams of high carbon steel used in all of our disks. More steel means more than durability and rigidity. It adds weight to keep disks in the ground.

Models for every need. Whatever type of disk you need, we've got a model for you. From our massive 281 Offset to the 270 series flex-wing tandem, to the 250 series semi-flexible frame, to the 264 rigid disk. Each offers specific features and attachments to make tillage easier and faster.

Come in and let us show you the difference in disks. And the difference in White Farm Equipment.