

REAL ESTATE

**Central  
Susquehanna, PA**

157 acre dairy farm, excellent land. 67 cow freestall barn, 75 cow heifer barn, 24 cow milking room 3" pipeline, 6 Delaval milkers, 1000 gal. bulk tank. 20x72 concrete silo, 2 Jamesway belt feeders, 5,000 bushel corn dryer. Large house with 2 new adjoining apartments, \$350,000 bare. Registered holsteins (rolling herd average 19,000) and machinery available.

**Earl Harris**  
R.D. 2 Box 139  
Watsonstown, PA 17777  
Phone after 7 PM  
**717-437-2888 or**  
**717-538-3185**

REAL ESTATE

**VIRGINIA**



**WHITE HALL PLANTATION**

in Campbell County Virginia 23 Miles southeast of Lynchburg 1364 Acres with 200+ acres in crops 190 acres in improved pasture and 950 acres in timberland Beautifully restored historic residence (ca 1809) Two detached quarters near house Nice manager's house 7 years old All excellent working farm facilities include a large barn 3 grain bins with drying 2 bunker silos 2 large equipment sheds large shop Operating as a hog center beef cattle and sheep farm for over 11 years Details upon request

\$975,000

CONTACT FOR FURTHER INFORMATION ON THIS AND OTHER FINE SHENANDOAH VALLEY FARMS

**OTIS MEAD**  
(EVE)  
703/463-2740

**MEAD**  
**ASSOCIATES**  
INCORPORATED

**JIM MOORE**  
(EVE)  
703/463-7050

21 North Main Street in Lexington Virginia 24450 in Telephone 703/463 7168

**FARM AVAILABLE NOW  
PRICED TO SELL!**

120 acres, 20 mile from Carlisle, nice level fields, several ponds and stream for irrigating, large bank barn and house with all improvements, large mobile home on property, owner will offer financing. Call 717-249-1165 after 5 PM

**NORTHCENTRAL, PA.  
FARMS &  
INVESTMENTS  
PRICED TO SELL**

**DAIRY FARM UNDER \$100,000**

Approx. 120 acres. 48 cow tiestall barn. 2 rows B/back. Pipeline, pump, milking equip., & barn cleaner. Need bulk tank. 20x70 Harvestore w/Goliath unloader. 2 story frame house, just \$98,500 Federal Land Bank Financing available to any qualified buyer. M-635

**BUSINESS OPPORTUNITY**

Over 1/4 million gross, small town grocery store, stocked & equipped, 4 bdrm, 2 baths, apart above. Reduced to \$125,000 #1950-T PH: 717-265-3171 or 717-265-8903

**250+ ACRE DAIRY FARM**

Approx. 180 tillable, 66 tiestall barn in 3 rows. Pipeline w/800 gal. bulk tank. 20x60 silo w/unloader. Mow conveyor. Heifer barn and machinery shed. Remodeled 4 bdrm home. Approx. \$130,000 of existing FLB & FHA farm loans. Spring possession. Priced right at \$165,000 M-603

**72 COW DAIRY FARM**

50 tiestalls on pipeline w/22 ready to hook on. Additional 20 heifer stalls. 20x60 & 16x50 silos w/unloaders. Approx. 188 acres all but 40 till or pasture. Pole barn & shop/machinery shed. Totally remodeled 5 bdrm home. Existing FHA 5% int. loan for \$95,000 Just \$179,500 M-532



Offices: Area Code - 717  
Tioga, Potter & Bradford Counties call or write  
MANSFIELD, RD 1, Box 41 662-2138  
TOWANDA, Bridge St 265-3171  
OUR #1 AIM IS SERVICE

**COUNTRY PROPERTIES**

G.D. Hannum, Realtor

**CHESTER COUNTY:**

- 132+ AC - Colonial farmhouse with 14 stall barn, pond. Mostly tillable. May subdivide. \$410,000
- 50+ AC - Horse farm with 1822 stone/frame house, 33 stall barn, arena, cross country course, etc. \$370,000.
- 47+ AC - 3 BR house with good farmland. Excellent location. \$240,000
- 10+ AC - Open land. Ideal for farmette \$40,000

Contact: Hale Truitt  
215-347-2065 OR  
215-869-9310

**ADAMS COUNTY FARMS**

- F-3162-1 91 Acre Dairy or Beef and Layer Farm large brick 6 bedroom home, 3 baths, nice setting, stocked pond, good income potential excellent tax benefits \$225,000 00
  - F-4393-6 91 acre 64 freestall dairy farm, Pipeline milkers, one year cap manure pit Large 3 bedroom home, bunk feeder, working farm cattle & equipment negotiable \$245,000 00
  - F-4473-11 Starter Dairy Farm, 77 new freestalls, large barn 25 tiestall milking stable large brick & frame 2 family home May be purchased with 10% acres for \$85,000 additional land for sale or lease
  - F-4053-6 100 Acres with large bank barn, near Littlestown 70 acres tillable, stream \$150 000 00
  - F-4423-4 40 Acre beef or horse farm, civil war certified stone home, bank barn, with loafing shed stream, pond mostly fenced additional land available \$125,000 00
  - F-4467-2 30 Acre Gentleman Farm, Civil War certified log home, original style restored bank barn stream, orchard fenced pasture \$125,000 00
  - F-4480-2 11 Acre Hog Farm, 2 story Cottage style home, 2 fireplaces, 18 crate farrowing house with pit under, Butcher house garage barn, stream \$78,000 00
- LARGE VARIETY OF LAND PARCELS** 1 acre to 160 acres Access to 3 multi-list services, buying or selling in York & Adams Counties Call Dan Rodgers (717) 632-3468

**KEY REAL ESTATE**

Dan Rodgers (717) 632-3468 or (717) 632-6400  
108 York Street  
Hanover, PA 17331

**UNION COUNTY...**

**105 ACRE DAIRY OPERATION...** double 8 parlor, 103 free stalls for cows, 100 free stalls for heifers, 2nd calf & heifer barn, 2 Harvestores 20x60's, one 20x70, one poured concrete 20x70, 1 stave 20x50, 50x96 manure shed

Plus -

**RETAIL STORE!**

Packaged Milk, Ice Cream and Convenience Foods! Excellent Milk Processing Facilities!

Also...

Four bedroom frame home - must see total operation for all the extras!!

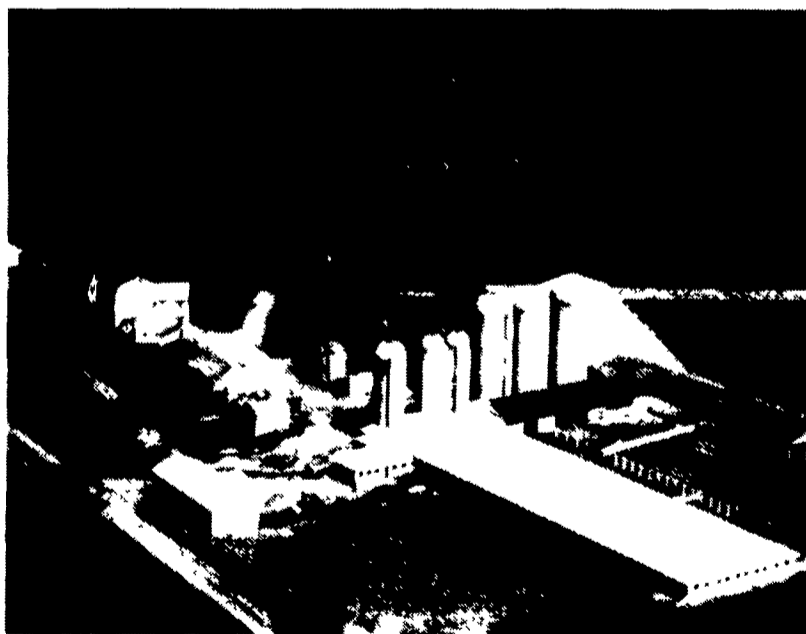
**RICH BRANDT FARM REAL ESTATE**

2230 5th St. Highway, Reading, PA 19605  
(717) 274-3622 - office - (215) 378-1122

**FINEST 1150 ACRE NEW YORK STATE FARM**

Owned And Operated By John Oertle And Family

- \* 700 Registered Holstein Cattle
- \* 2000 Ft Air Strip & Hanger
- \* Complete line of Modern Farm Equipment all in Excellent Condition
- \* Super Valley Soils
- \* Large Level Fields, Highest Yields Per Acre



- \* Ultra Modern Barns
- \* 3 Very Good Homes
- \* 6,000 Gallon Bulk Tank.
- \* Excellent Milk Market
- \* New Corn Drying System with 2 Large Storage Buildings For Home Grown Grains Capacity 2000 Tons Each

Once in a lifetime opportunity for the progressive farm family or investor group to own the most prestigious dairy operation in the East. Superb home grown purebred Registered Holstein herd. Highest quality valley soils in long growing season area. Most fields over 1 mile long. Very modern farm buildings for over 700 head. Three good homes. Some of the best well

maintained equipment anywhere. This 2nd generation farm has been consistently one of the most profitable dairy operations in the Northeast. Retiring owner offers this complete operation for \$2,700,000 and will provide financing for qualified buyer. Also available additional Valley Acreage which would easily make this a 1000 cow operation.

"All inquiries confidential."

**Country Boy Realty**

140 East Main Street, Cobleskill, New York 12043  
Telephone: 518-234-4371  
Alton Makely, President  
Phil King, Farm Sales Manager

**This Quality Farm Being Offered Exclusively through 2 of N.Y. States Largest Most Experienced Farm Brokers.**

Call or Write For Complete Details

**Barmann's Realty Sales**

P.O. Box 437, New Hampton,  
New York 10958  
Telephone: 914-343-1108  
Hans Barmann, Owner  
Zar Benedict, Manager