

Sale Reports

A Farm Auction was held March 24 by Eugene Anderson, R.D. 1, Blain, Perry County, Pa. on Fowler's Hollow Road.

The 267 acre farm with 167 tillable acres; 2

story frame house with aluminum siding, bank barn, 2 silos and other out buildings was sold for \$161,000 to David Stoltzfus, Gap, Pa.

Kling's Auction Service conducted the sale.

A Public Sale of farm machinery was held March 20 for Joseph A. and Sally Byler, 5 miles west of McVeytown, Mifflin Co., Pa.

Some prices received were: Int. 584 tractor & loader \$8000, Int. 756 tractor \$5700, bale wagon \$1250, N.H. 268 baler \$2150,

Haybine \$3100, Int. manure spreader \$2500, Smoker elevator \$875, wheel rake \$400 and dump wagon \$1150.

Mark Glick was the auctioneer.

xxx

A Public Auction of farm machinery was held March 24 by H.H. Mylin, 2 miles west of

New Columbia, Union Co., Pa.

Some prices were: M.F. 1080 tractor \$6100, Case 930 D tractor \$3200, manure pump \$1950, Hesston haybine \$1100

George H. Deitrick was the auctioneer.

xxx

A Complete Dispersal of grade Holsteins and farm machinery was held March 24 by Arthur

and Phyllis Chandler in Chemung, N.Y., off route 17.

The high cow sold for \$1475 and the average of the 55 cows was \$650.

Other prices included: Int. 856 D tractor \$14,400, Int. 1066 D tractor \$11,100, J.D. 7000 4-row corn planter \$7000, Ford 8N tractor \$2400, Hesston 400 self-prop. haybine \$2900 and Dion wagon \$2600.

Sale manager was Gordon Wood.

xxx

A Public Auction of farm equipment and antiques was held March 24 by Nevin R. Troutman, 2 miles east of Pillow, Pa.

Some prices were: Ford 4000 D tractor \$9100, Int. Farmall 560 D tractor \$2900, Farmall H tractor \$1000, Ford 140 3-bottom plow \$655, Int. 510 grain drill \$4250, J.D. 640 side delivery rake \$800, N.H. 66 baler \$425, Ford 309 2 row corn planter \$740, potato plow \$80, schnitzelbank \$75, saddlers bench \$35, butcher kettle & stand \$98, sausage stuffer \$105, large anvil \$180, wooden washing machine \$85, wagon seat \$50, wooden butter churn \$65 and bucket bench \$90.

George and Mike Deibert were the auctioneers.

xxx

A Public Auction of farm machinery was held March 19 by Tom and Glori Hostetter, R.D. 3, Jonestown, Union Twp. Lebanon Co., Pa.

Some prices included: Surge 800 gal. bulk tank \$3000, Cornell barn cleaner \$500, Bale King hay wagon \$1450, Lamco forage wagon \$1550, N.H. 273 baler \$1750, N.H. 469 mower conditioner \$1350, Landoll #205 3 pt. chisel plow \$800, A.C. 185 D wide front tractor \$7200 and A.C. D wide front tractor w/loader \$3100.

Harry H. Bachman was the auctioneer.

xxx

The Hemlock-View Complete Herd Dispersal was held March 21 by Craig and Drew Bagley, just off Rt. 154, 3 miles south of Shunk, Pa. A large crowd attended the sale.

The high cow sold for \$1900 and the 2nd high was \$1550. The average for the 83 head of registered and grade Holsteins, Swiss and Jersey cows was \$950.

The 1000 gal. Girton bulk tank sold for \$4000 and the DeLaval 2" SS pipeline and brackets sold for \$4200.

Sales manager was Gordon Wood.

xxx

A dairy herd dispersal was held March 26 by Clifford and Jane Martin, of R2 Denver.

Thirty-two head of grade cattle averaged \$972.50. The top cow sold for \$2075. Second high seller sold for \$1450 and third high seller for \$1325. Also sold were 20 grade heifers for an average sale price of \$689.75.

Auctioneers were Paul E. Martin and John D. Stauffer.

RESCHEDULED PUBLIC SALE

Herr's Fruit Farm
THURSDAY, APRIL 5, 1984

9:00 AM

Located along Habecker Church Road, RD 2, Lancaster PA (take Rt. 999) west of Millersville to Central Manor Store; turn right onto Central Manor Road, go to second road on left Habecker Church Road to sale (watch for signs).

Sale by,
HERR'S FRUIT FARM

Howard Shaub
464-3541 and
Roy C. Probst
Auctioneers

2 AUCTION SALES

at Bel Air Auction Galleries, Inc., 13 Ellendale St., Bel Air, Harford Co., MD 21014 (1 Block from U.S. Rt. 1 and MD Rt. 24, Rock Spring Rd.)

SAT., APRIL 7, 1984

at 6:30 P.M.

1931 Antique Car Morris & Roadster convertible, other household goods and antiques.

WED., APRIL 11, 1984

at 6:30 P.M.

Hepplewhite-corner cupboard, chest of drawers, game tbl., drop leaf tbl.; block front Chippendale desk; cut glass; china.

William H. Amoss,
Auctioneer
(301-879-7272)

CANCELLED
Mel Stoltzfus Consignment Sale
in Rebersburg, PA.
Rescheduled For
Tuesday, April 3, 1984

DUE TO INCLEMENT WEATHER THE GRUMELLI FARM AND INDUSTRIAL EQUIPMENT AUCTION SCHEDULED FOR

MARCH 29 at Quarryville has RESCHEDULED

The Sale will be held on

WEDNESDAY APRIL 11
at 10:00 AM

Blaine N. Rentzel, auctioneer

PUBLIC SALE TWO EVENINGS OF AUTO PARTS

TUES., APRIL 10, 1984

at 5:00 P.M.

WED., APRIL 11, 1984

at 5:00 P.M.

Sale to be held in the Al Starr Community Building, village of Willow Street, PA (loc. along north Rt. 272 behind Firehall)

MOTORS: 1924-38-48 & 33 Chevy, 2-1936 Buick, 2-1936 Nash, 1948 Ford, & 1946-55 Packard. **AUTO PARTS:** upper & lower ball joints, tie rod ends, idler arms, drag links, coil springs, gas tanks, radiators, lots of wheels, lots of fenders, lots of headlights, old car doors, windshield frames, car heads, trans., carbs, wiper motors, fuel pumps, steer. columns, old dist., door handles, lighters, front & rumble seats, lots of grills, shocks, motor mounts, radio heads, trans. parts, & other. New & used tools.

Not responsible for accidents day of sale. Food served.

No Out Of State Checks.

Sale by
CLARENCE HERR, JR. & HERR'S AUTO WORK

HOWARD SHAUB 464-3541
and Roy C. Probst
Auctioneers (AU-000831-L)

NINTH ANNUAL PUBLIC CONSIGNMENT SALE

SAT. APRIL 7, 1984

RAIN OR SHINE

STARTING AT 9:00 A.M.

Annual Auction of: Farm Machinery, Lumber & Bldg. Supplies, Household Goods, Antiques, Recreation Vehicles, Trucks, Tractors, Automobiles, Lawnmowers, etc.

NESCOPECK TWP. VOL. FIRE CO.

No. 1 at Routes 93 and 239
R.D. 1, NESCOPECK, PA.

ITEMS FOR CONSIGNMENT: Please contact us immediately. We need a list of your items in advance for future advertising.

Items will be accepted during the week prior to sale date. Anyone interested in consigning items to this sale please contact one of the following:

HERSCHEL HILEMAN, Jr. at 379-3807
HARLOW HILEMAN at 379-3817
RAYMOND SMITH at 379-3780
Auctioneers: Albert L. Broyan, Dennis Briggs, Dan Nevius, Olin Knecht, Ed Michael

PUBLIC SALE OF 53 ACRES M/L FARM Ephrata Township

THURSDAY, APRIL 19, 1984

Sale Time 2:00 P.M.

Located along Hahnstown Rd., Ephrata Township, Lancaster Co., Pa.

Directions: Rt. 322-222 Interchange - turn east onto Rt. 322 approx. 1/2 block turn left onto Hahnstown Rd. drive approx. 1 mile. Farm on right.

53 ACRES M/L FARM

Frame Bank Barn with attached tobacco shed & straw shed.

Stream in meadow. Several acres of woodland area. Approx. 47 tillable acres.

Farm in high state of productivity. Located in the "heart" of Lancaster Farm County.

For inspection or information call 733-3597 or 733-4914.

Terms by:

MARY S. MILLER ESTATE

C. Gehman Miller,
Kathryn M. Sweigart, Executors

T. Glenn Horst, Auct. (717-859-1331)
Timothy G. Horst, Auct. (717-738-1245)
George Morgan, Atty.

SHORT NOTICE-

PUBLIC SALE

OF
67 - DAIRY CATTLE - 67
MONDAY, APRIL 2, 1984

11:00 A.M.

LOCATION: Cumberland Co., Pa., 5 mi. S. of Shippensburg - Traveling Rt. 11 turn onto S. Queen St. at Kentucky Fried Chicken in Shippensburg. After crossing over I-81, turn right at 1st crossroad onto McCulloch Rd. Follow to sale. Sale signs posted day of sale. (Ben Musser farm).

67-HEAD OF HOLSTEIN DAIRY CATTLE-67

Herd contains of 67 mature cows; 3 due by sale date, 12 fresh in Feb. & Mar., 9 due for April & May, others in various stages of lactation. All cattle are tested and preg. exam.

This is a herd of young cattle; mostly first, second and third calf heifers. Sires Used: Winding-Creek Job Sonny (out of ABS Bull); Jander-Lakevue Snowman (out of Altantic Bull); Segreid-Valley Legacy Whitecloud (out of Canadian Bull); Used some Atlantic A.I. Service.

More information given day of sale. Catalogs available.

Not responsible for Accidents

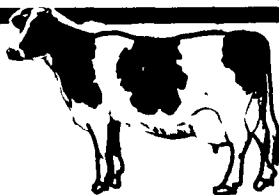
I.D. Required

TERMS BY:
ANDREW & FAYE BROUGHER

R.D. 6, Shippensburg, Pa.
Ph. 717-532-3213

Auctioneers:
Melvin Sensenig - 776-5054
Nevin Martin - 354-7186
LI-AU-001078-L

Lunch Served



NEW HOLLAND SALES STABLES, Inc.
DAIRY SALE
New Holland, Pa.

WEDNESDAY, APRIL 4, 1984

SPECIAL CONSIGNMENTS

OF

8 REGISTERED HOLSTEINS FORM R-E-W FARM, Lebanon, Conn.

- #1 - 4 yr. old Willow Farm Rockman dtr. classified 85 3 yrs. 266 dys., 13,836M 4.0T 1282F GrDam VG 86 over 18,000M 3.9 702F
- #2 - 4 yr. old Pinonia Matt Tippy dtr. Classified VG 3 yrs. 14,622M 516F. Dam and GrDam both VG. 3rd Dam EX with over 1000 fat.
- #3 - A.G.P. Glen Valley Star with over 18,000 milk and 735 fat. springing to Elevation Marc. Her VG Dam has 22,423M and 882F.
- #4 - 4 yr. old Willow Farm Rockman classified VG 86 3 year record 15,407M 520F. Dam classified 86 GrDam EX due June to Chairman.
- #5 - Astronaut classified VG 87 due June to R-E-W Designer. 7 year record 18,391M 660F.
- #6 - Pinonia Matt Tippy classified VG due June. 5 yrs. 19,387M and 619F. Her Dam an Elevation classified VG with 363 days 27,828M and 1150F.
- #7 - R.O.R A.E. dtr. classified VG 6 yrs. 350 dys 19,226M and 654F due April to Hollow View Elevation Marc.
- #8 - Marquis Challenger dtr. classified VG 7 yr. record 365 days 24,543M and 910F Her Dam classified 88 due April to Levi Hollow Elevation Marc.

- Also
- 1 Load Purebred and Grade Canadian Cows, fresh and springing, consigned by Leroy Smucker.
- 1 Load fresh and springing cows consigned by Merle Breneman.
- 1 Load fresh cows consigned by Alfred Albright.
- 1 Load fresh and springing cows consigned by Marvin Eshleman.
- 1 Load fresh and springing cows consigned by Raymond Smucker.
- 1 Load fresh and springing cows consigned by H.D. Matz.