

PUBLIC AUCTION**FARM EQUIPMENT & MILKING EQUIPMENT****TUESDAY, APRIL 3, 1984**

at 10:30 A.M.

1 mile West of Quakertown & Rt. 309, along Rt. 663, first farm on right toward Milford Square, Bucks Co., Pa.

Oliver 770 gas tractor w/p. str., hyd. drawbar & 3 pt.; JD A tractor w/p. str.; culti. for same; JD 227 c picker; JD three bot. 16" trip trailer pl; Oliver three bot. 14" pl; JD 494-A four row c planter w/herb attach; JD 290 two r c planter; Dunham 10' cultipacker; JD 12' harrow; JD RWA-9' disc; Oliver 17 disc grain drill; NH 10' lime drill; NH 479 haybine; NH 256 rake; NH 273 baler w/thrower; NH model 315 manure spreader (1 yr. old); NH 16' & 18' metal side bale wagons; Hub 24' bale elev. used 2 yrs.; NH 333 flail chopper; NH 717 forage harvester w/1 r c head; NH #23 Hopper Blower; AC forage wagon; Oliver four whl. trailer; Smoker gravity wagon; Wood Bros. 6' rotary cutter; JD #5-7' mower, Hanson 100 gal. weed sprayer; NH cement mixer; 2-tractor grass seeders pto; horse drawn potato digger; horse walking pl.; 50' endless belt; Enterprize meat grinder; sausage stuffer; egg washer & baskets; crocks; GE auto. washer; plus few misc. household items; BB-4 Surge vacuum pump; 4-Surge milker units, one is 50 lb.; dbl. stainless rinse tub; carrying pails; 5 milk cans; Stewart cattle clipper; dehorning iron; 24" barn fan w/thermostat; plus many items not mentioned.

Terms - Cash or check

Ordered by

DARWIN A. & SARA GEISSINGER

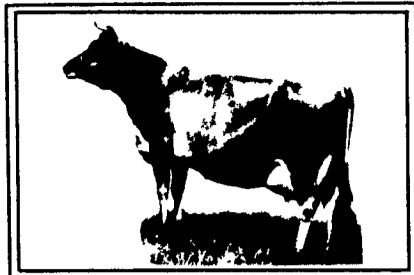
Conducted by

Ralph W. Zettlemoyer Auction Co. Inc.

(215) 395-8084

Pa. license #AU 001809-L

Refreshments by the Church Ladies


**YORK COUNTY
COMPLETE
REGISTERED
JERSEY AND
AYRSHIRE DISPERSAL**

At New Holland Sales, Inc.

WEDNESDAY, APRIL 4, 1984

40 head, 24 matured registered Jerseys and Ayrshires. 6 Ayrshires just fresh. 15 Jerseys, 6 just fresh. Several more springing close. 16 registered Jerseys and Ayrshire heifers. All sizes. A real clean herd with good udders and high butterfat. Last creamery test 4.7%.

Consigned by

GLENN & DAVID FITE

Phone 717-786-2750

or 717-786-1724

PUBLIC SALE
**VALUABLE TRUCKS,
TRAILERS, BACKHOES,
FARM MACHINERY, ETC.**
FRIDAY, APRIL 6, 1984

Sale Starts:

12 O'Clock Noon Sharp

1841 Sheepford Rd., Mechanicsburg, PA. From Dillsburg N. Along Rt. #15 Approx. 8 Mi. To Slate Hill Exit Or From Harrisburg S. Along Rt. #15 Approx. 4 Mi. To Slate Hill Exit Get Onto Slate Hill Rd. Go To Top Of Hill Turn R. Onto Lisburn Rd. Go Approx. 1/2 Mi. To Sheepford Rd. Turn L. Approx. 1 1/2 Mi. To Sale. Signs Posted.

**TRUCKS --- TRAILERS --- BACKHOES
FARM MACHINERY ETC.**

1973 White 9000 Single Axle Tractor Truck, 60,000 Lbs. Gross Wt. Wet Line Included, Current Inspection A-1; 1971 Ford 1/2 Ton Pick-Up Truck, V-8 Engine, Current Inspection, Tires OK, Good Running Order; 1968 Dodge 1000 Single Axle Dump Truck, 10 Ton, Live Hydraulic Equipped w/12 ft. Snow Plow, Current Inspection A-1; 1972 Parker 26 ft. Aluminum Drop Trailer, Current Inspection Excellent Condition; Beaver 9 Ton Tagalong Lowboy Trailer, 3 Axles Current Inspection A-1; Dynahoe #160 Backhoe, Detroit Deisel, 60 Horsepower w/Front end Loader A-1, Massey Ferguson Model 50 Backhoe w/Front end Loader A-1; 1982 John Deere 7000 Max-Emerge Corn Planter, 4-Row, No-Till w/Liquid Fertilizer & Monitor, Same As New Used Once; 1979 Demco Field Sprayer 500 Gal. 45 ft. Booms, A-1 Condition; Bush-Hog #146 Offset Disk, Heavy Duty, 12 ft., Hydraulic Wheels Fine Condition; Massey Ferguson #520 Disk Harrow, 10 ft., Hydraulic Wheels A-1; 1975 Massey Ferguson #260 Forage Harvester, New Knives, 2-Heads, 6 ft. Pick-Up Head and 2-Row Corn Head, 1000 PTO Excellent Shape; Bush-Hog Chisel Plow, 10 Chisels, 1 Year Old Like New; Badger 205 Bu. Manure Spreader Same As New; Gehl Forage Box Fine Shape; 3-Hay Wagons, High-Sides on Rubber, Fine Condition; Massey Ferguson Sickle Bar Field Mower, 6 ft. Bar Good Shape; Massey Ferguson Hay Rake, 3 pt., Fine Shape; Drag Harrow, 12 ft. Good Shape; New 1500 Gal. Poly Fertilizer Tank; 8000 Gal. Steel Tank Good Shape; Field Drag; Feed Hoppers Plus a Few Other Small Items Etc.

NOTE: If Looking For Trucks, Trailers, Backhoes or Farm Machinery, Check This Sale. Everything Here Is In Like New To A-1 Condition Ready To Be Used. Don't Miss This Sale. Short Sale Don't Be Late.

TERMS OF SALE: Cash or Approved Check Only.

LARRY & PRESTON WARD

Phone 1-717-774-3070

Owners

George Haar, Auctioneer

Phone Dillsburg 432-3815

Flohr & Otto Clerks

Refreshment Rights Reserved
Not Responsible For Accidents**LARGE CONSIGNMENT****★ AUCTION ★****SATURDAY, APRIL 7, 1984**

10:00 A.M.

1/2 Mile south of Newport on Route 34, adjacent to Lesh Motors—Watch for Auction Signs.

REAL ESTATE AT 1:00 P.M.

(1) 66 acre tract of woodland located in Miller Twp., Perry County, approximately three (3) miles from Newport. With Road Frontage.

(2) 22 acre tract of woodland located same as above. Well maintained, access road.

(3) Building lot in Millerstown.

20 Percent down day of sale

Settlement within 60 days

(Call 567-3182 or 567-3523 for additional information)

EQUIPMENT-TOOLS-TRAILERS, ETC., ETC.

John Deere 500 snowmobile with new track; 10x50 Princess Mobile home (will be sold after real estate) Furniture, Changeable letter signs, 4'x8'; 3-axle aluminum frame Beavertail trailer with sides; snowmobile trailer and other utility trailers.

Large Lot of Office Machines — Electric adding machines; calculators; checkwriter typewriter, etc; Toshiba Fax high speed copier with supplies in good condition. Assortment of fractional HP fanbelts. Lot of new radio speakers. New tools of all kinds, socket sets, wrenches riveters, air tools, spray guns, and sand blasters, etc., H.D. Ind. drill press, new pressure washer, new stereo with speakers, hydraulic jacks (all in good operating condition). Scotts lawn and garden fertilizer — just in time for Spring! Farm wagon, rubber tired; disc; manure spreader, 2-bottom plow; antique Farmall tractor (good unit to restore); 1972 Ford F-700 (Louisville Line) wrecker with 39,000 miles. Farm consignment with hdy. equipment, tractors, mowers, and wagons; load of small items.

AUCTIONEER'S NOTE: This is only a partial listing. I will be accepting consignments up till March 31!!

Lunch stand and Homemade Candy stand.

(Fully Insured—Licensed & Bonded)

OUR SERVICE DOES NOT COST—IT PAYS

LESH

AUCTION CO.

COMPLETE AUCTION SERVICE

RALPH J. LESH, JR.

NEWPORT, PA. 17074

SPECIALIZING IN ESTATES, LIQUIDATIONS, REAL ESTATE

PAAL #AU-002093-L

ESTATE AUCTION**SATURDAY, APRIL 7, 1984**

At 10:00 A.M.

8 Miles South of SUNBURY along Route 147 in Lower Augusta Township, Northumberland County, Pa.

2 FARMS 2

Farm No. 1, 8-ROOM FRAME DWELLING; BANK-TYPE BARN 117 ACRES, approximately 50 Acres Tillable (at present time 20 acres under cultivation) balance of land is Pasture and Wooded. Frontage on Rt. 147; Susquehanna River is Western Boundary.

Farm No. 2, 91 ACRES, approximately 37 Acres tillable (at present time 15 acres under cultivation) balance of land is Wooded. Frontage on Rt. 147 and Frontage on Township Road. The area along the Township Road would be IDEAL FOR HOME SITES.

Note: Farm No. 1 and No. 2 are adjoining farms separated by Rt. 147. Both farms have a Fantastic View of the Susquehanna River and Surrounding Countryside! It will be worth your while to inspect!! FOR INSPECTION CALL: 717-425-3313

TERMS: 10% down the day of sale, further terms and conditions to be announced when real estate is offered at 11:00 A.M.

PERSONAL PROPERTY

Household Items including: G.E. Refrigerator; Coal Stoves; Estey Parlor Organ in Piano Case; (2) Fainting Lounges; Treadle Sewing Machine; Crocks; Wooden Tubs; Porch Glider; other items not listed.

Vehicles including: 1974 Chevrolet Caprice 2-Door Automatic with Radio. 1955 Ford 4-Door Automatic with Radio. 1949 Ford F-3 Truck with Stake Body, Low Mileage, Good Body.

Farm Equipment including: Oliver HG Tractor, not running w/Cultivator; 2-Bottom Trailer Plow; Flat Bed Wagon on Rubber; Grain Drill; 3-Section Harrow; Side Delivery Rake; 2-Row Corn Planters; Wheelbarrow; Horse Drawn Farm Wagons; Buggy; Spring Wagon w/Top; Bob Sled; Riding Cultivator; Grain Binder; Hay Wagon w/Ladder Sides; Single Horse Plows & Potato Plow; Fanning Mill; harness; Grindstone; Blacksmith Forge; Extension Ladder; Single & Double Trees; Metal Fence Posts; Meat Grinder; Sausage Stuffer; Garden Tools; hand Tools; etc.; approximately 2-Ton Straw.

ESTATE OF **URIAS BOYER**

Russell B. Brosius, Executor

Carl Rice, Esq.

Rice, Boop & Storaska, Attorneys

George & Mike
Auctioneers
(717) 425-3313**DEIBERT****PUBLIC AUCTION**

New Freedom Department Store due to ill health going out of business after 36 years serving the public.

1928 model A Ford; 1930 model A Ford; Store Fixtures; Gondolas; Shelving; cabinets; display cabinets and misc. items; new and used Model A Ford parts.

SATURDAY APRIL 14, 1984

9:00 a.m. Sharp held rain or shine

On the premises number 2 East Franklin Street in the Borough of New Freedom York Co. Pa. (arrow signs posted)

**AUTOMOBILES-ANTIQUES-STORE FIXTURES
& MISC. ITEMS**

1928 Model A. Ford 2 dr. sedan motor recently overhauled; 1930 Model A. Ford 4 dr. sedan good running condition; 30"x24" meat block; assorted paper cutters; old railroad telephone; brass knob horse hams; single trees; ice saw; old horse drawn cultivator; horse collars; old hanging store lights; 1879 high boy bicycle; 2 buggy wheels; 2 bottle cappers; mail sorter cabinet, old patterns; army Air Force uniforms; Hill 45' adjustable wall or isle shelving; 6 adjustable metal gondolas; assorted sizes peg boards; 600 lb. brass hanging scales; wall shelving; 4' peg board display; greeting card display units, check out counter; wooden paper bag holder; boat display rack; display & storage racks; 6 dumpster tables; shoe display rack; 100 unit skirt rack; 6 drawer utility cabinet; 2 chrome & one ice cream design fitting stools; 2 round chrome skirt racks; Timex display cases, 3 chrome arm chairs; sign making kits; revolving racks; storage racks; lots of display racks; 5 large colonial wooden signs; odd lots of carpet; work bench; lumber; 3 cases of 12"x12" floor tile and cement; double cement wash tub; Sweda Cash Register; 2 department store signs; 3 adding machines; Typewriter; check writing machine; Westinghouse coppertone refrigerator; window air conditioner; Top Flite 3 1/2 H.P. rotary lawn mower, lime spreader; lots of fixture glass of all sizes, automatic clothes dryer, shoes & clothing, metal single bed & spring; reclining rocker, 2 overstuffed arm chairs, hay hook There are many items too numerous to mention.

Not responsible for accidents.

Inspection Friday April 13th from 11:00 a.m. to 9:00 p.m.

Terms - CASH

Owners

MR. & MRS. NORMAN KISER

Charles W. Shrodes #AU-00845-1

David W. Shrodes-Auctioneer

Phones 301-996-2424

692-5667

Lunch by the Ladies of New Freedom Fire Co.