



# WELDING EQUIPMENT and BATTERY CHARGERS



Available At

## FARMERSVILLE EQUIPMENT, INC.

The Dealer That Gives You Service After The Sale

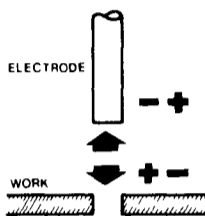


### FIVE WELDERS IN ONE

#### 295 AMP-AC/250 AMP-DC

1. Smooth - AC Welding
2. Force - AC Welding
3. Straight Polarity - DC Welding
4. Cutting Tap - DC Welding
5. Reverse Polarity - DC Welding

What's the difference between AC and DC Welding?

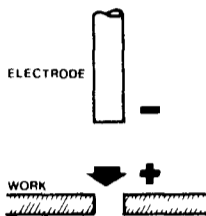


**AC CURRENT**  
AC continuously changes polarity since direction of flow is reversed 120 times per second for common 60 cycle electricity

- AC Current Ideal for**
- Downhand Heavy Plate
  - Fast Fill
  - Aluminum TIG Welding with Hi Freq
  - Carbon Arc Torch

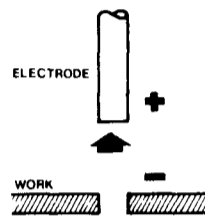
**This welder has two types of AC Current**

1. Smooth Arc for general purpose work
2. Force Arc for carbon arc TIG attachments and new fabrication



**DC STRAIGHT POLARITY**  
With DC straight polarity (DCSP) the electrode is negative and the current flows in the opposite direction electrode to work

- DC Straight Polarity Ideal for**
- Hard Facing
  - Single Carbon Brazing
  - Build up Heavy Deposits
  - Stainless Steel TIG Welding
  - Cutting Tap Cuts like 400 Amps



**DC REVERSE POLARITY**  
With DC reverse polarity (DCRP) the electrode is positive and the current flows from the work to the electrode

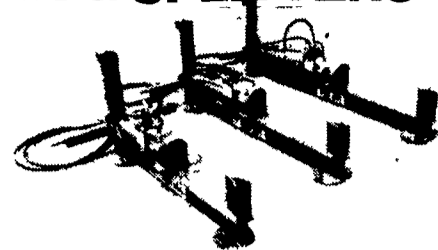
- DC Reverse Polarity Ideal for**
- Overhead Welding
  - Vertical Welding
  - Cast Iron Welding
  - Heavy Aluminum
  - Rivet Welding
  - Sheet Metal
  - Low Hydrogen Welding
  - Arc Bronze Rod

Model 110-078-000  
(Pictured with High Frequency Arc Stabilizer Attachment)  
INCLUDES: Instruction book, wall receptacle, wide vision helmet, electrode, cable with holder, ground cable w/clamp

**We Will Demonstrate In Our Shop Or On Your Farm Call Ken Burkhart - Now**

- Stop In And See These Amazing Products From Century •
- Make An Investment In A Welder That Will Last A Lifetime •
- We Will Trade Your Old Welder •

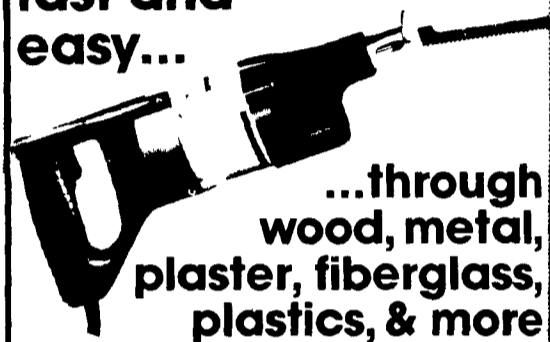
## BUSH HOG<sup>®</sup> LOG SPLITTERS



Powerful hydraulic log splitters - for farm, campground, & commercial use.

- Model LS-19A: 19" Log Capacity **\$495<sup>00</sup>**
- Model LS-27A: 27" Log Capacity **\$595<sup>00</sup>**
- Model LS-33A: 33" Log Capacity **\$695<sup>00</sup>**

## heavy-duty SAWZALL<sup>®</sup> hacksaw cuts fast and easy...



- 3 Sawzall models including new double insulated or grounded units. Two speed and variable speed models up to 2400 strokes per minute
- Full 1/2 stroke
- Blades available for all materials
- Parts & Repairs available in our shop for all Milwaukee tools

### ATTENTION:

#### SMALL DIESEL TRACTOR OWNERS

Now Available - The New



## BUSH HOG<sup>®</sup> Rotary Tillers

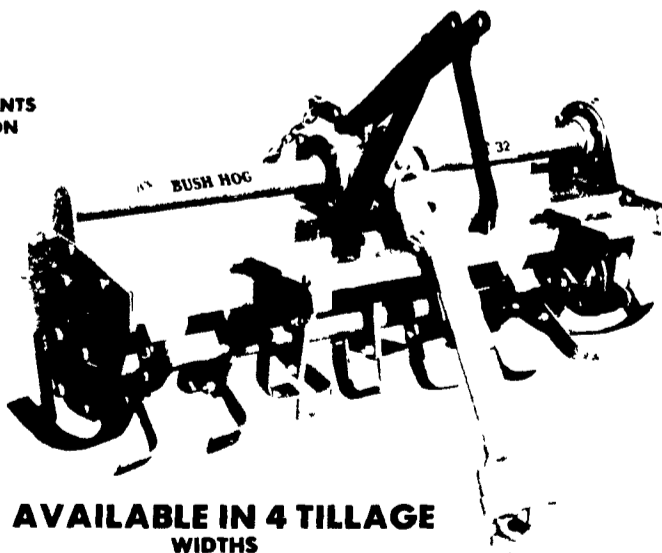
### PRICED RIGHT!

A TOUGH NEW LINE OF IMPLEMENTS FOR ALL TYPES OF CULTIVATION

For Landscaping, Gardens, Small Farms for Tractors 15 to 40 HP

#### ALL MODELS OFFER:

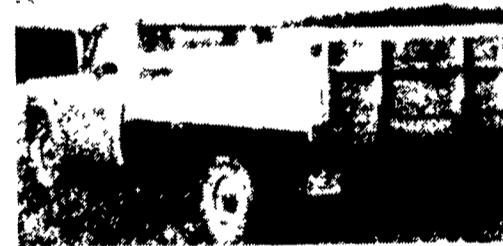
1. Tillage Depth: Adjustable to 6"
2. Offset Tilling: 8" to either side
3. Hitch: Category 1, 3 pt.
4. Gearbox: 540 PTO
5. Blades: Angular "L" Type
6. Rotor: Four Blades Per Flange
7. Warranty: One Year



#### AVAILABLE IN 4 TILLAGE WIDTHS

- Rt-32 32" Rotary Tiller . . . . . \$995.00
- Rt-40 40" Rotary Tiller . . . . . \$1095.00
- Rt-52 52" Rotary Tiller . . . . . \$1195.00
- Rt-60 60" Rotary Tiller . . . . . \$1295.00

## LAMCO



**CLASSIC WOOD STAKE BODY**  
6' Wide x 8' Long with 20" Sideboards  
**INSTALLED On Your Pick-up For Only \$695<sup>00</sup> Complete**

Now available  
**LAMCO**  
7 1/2' Wide x 9' Long with 36" Sideboards  
**INSTALLED on Your 10,000 G.V.W. Dual Wheel Truck. 60" C.A. Required For Only \$895<sup>00</sup> Complete**

### LAWN & GARDEN EQUIPMENT CONSIGNMENT AUCTION

Monday Evening, April 30th  
Consign your Lawn & Garden Equipment now to have it advertised FREE.

Oliver and White Tractor Owners  
**IF YOU NEED PARTS, CALL US!**

# FARMERSVILLE EQUIPMENT INC.



RD 4, East Farmersville Road, Ephrata, PA 17522  
Located in the Village of Farmersville, Lancaster County  
**717-354-4271**

Store Hours: Monday-Friday 8 AM - 5 PM; Saturday 8 AM - 1 PM

