



HAY MARKETS

Frederick Co. Hay

Buckeystown, Md.
Thursday, March 22
Report supplied by auction
60 loads; market steady and demand good.

Alfalfa 11 loads good to fancy 150.00-166.00; 2 dark 85.00; Alfalfa Mixed 3 fair to good 100.00-130.00; Timothy 10 good to fancy 120.00-134.00; 8 fair to good 97.50-115.00; Clover 3 good 120.00-145.00; Orchardgrass 85.00; Mixed hay 4 fair to good 115.00-138.00; 2 fair 96.00-100.00; Bromegrass 2 good 102.50-105.00; Mixed grass 5 fair 75.00-105.00; Straw 6 bright 80.00-90.00; Locust posts small round 1.60 each.

Leinbach's Hay

Shippensburg, Pa.
Sat., Mar. 17 & Tues., Mar. 20
Report supplied by auction
110 loads.

Alfalfa 100.00-155.00; Mixed 72.50-110.00; Timothy 72.50-102.50; Bromegrass 92.00-118.00; Clover 100.00-115.00; Orchard grass 80.00-100.00; Straw 65.00-91.00; Ear Corn 130.00-142.00; Corn Fodder 34.00; Oats 3.00-3.05 bu.; Firewood 25.00-40.00; Pick-up load of locust posts 1.00-2.00 each.

New Holland Hay

New Holland Sales Stables
Monday, March 19
Report supplied by auction
Compared to last week prices steady on straw. All hay 5.00-10.00 higher. Ear corn steady. 249 loads.

Alfalfa, choice 140.00-170.00, 22 lds. over 150.00, several lds. 1st cutting 120.00-140.00, few off color, under 120.00.
Mixed Timothy Alfalfa, several lds., 130.00-150.00; Timothy Clover Mix, 115.00-130.00, some 100.00-115.00; Timothy, 104.00-136.00; Clover, 95.00-112.00; Straw, 100.00-115.00.

Few Oats Straw, under 100.00; Ear Corn, 127.00-136.00; Oats, 2.65 bushel; Firewood, 52.00 and 75.00 per ld.

Clover Seed, 47.00-48.00 per bushel; Timothy Seed, 25.00 and 26.00 per bushel.

Greencastle Hay

Monday, March 19
Report Supplied by Auction
30 loads.
Alfalfa 73.00-156.00; Mixed 85.00-116.00; Timothy 109.00-110.00; Straw 62.00-69.00; Bromegrass 111.00.

Vintage Hay

Vintage Sales Stables
Thursday, March 22
Report supplied by auction
37 loads.
Alfalfa 120.00-161.00; Alfalfa Mixed Hay 112.00-140.00; Clover 98.00-124.00; Timothy 112.00-120.00; Straw 104.00-116.00, mostly 107.00-108.00; Corn 127.00; Corn Fodder 90.00.

Keister's Hay

Middleburg, Pa.
Tuesday, March 20
Report supplied by auction
91 loads.
Alfalfa 95.00-145.00; Mixed hay 60.00-102.50; Timothy 70.00-75.00; Straw 70.00-80.00; Ear Corn 100.00-115.00; Corn Fodder 57.50; Oats 2.35-2.70 bu.; Firewood 25.00-35.00 per load.

Good's Hay

Leola, Pa.
Wednesday, March 21
Report supplied by auction
145 loads.
Mixed Hay 98.00-147.00; Straw 87.00-117.00; Alfalfa 117.00-159.00; Timothy 89.00-125.00; Corn 114.00-129.00; Clover 104.00 and 113.00; Oats 2.50 and 2.65 per bushel.

Belleville Hay

Belleville, Pa.
Wednesday, March 14
Report supplied by PDA
35 Loads Hay and 5 Loads Straw.
Alfalfa 122.50-150.00; Mixed hay 72.50-152.50, mostly 80.00-132.50; Straw 72.50-100.00.

King's Auction

Tuesday, March 20
Report supplied by auction
64 loads.
Alfalfa 121.00-157.00; Alfalfa mixed 122.00-155.00; Timothy 106.00-145.00; Clover 116.00; Grass mixed 112.00-119.00; Ear Corn 125.00-126.00; Tobacco ribs 11.00 per bale; Straw 91.00-120.00; Firewood 27.00-44.00 per load.

New Wilmington Hay

New Wilmington, Pa.
Monday, March 16
Report supplied by PDA
87 Loads Hay and 6 Load Straw.
Alfalfa 90.00-147.50, mostly 100.00-134.00; Mixed hay 72.50-100.00, few 110.00; Timothy hay 70.00-91.00, one load 97.50; Clover, few 72.50-100.00; Straw 65.00-74.00; Ear Corn, 4 loads 94.00-109.00; Reed Canary Grass, one load 66.00; Oats, 6 loads 2.30-2.44 per bu.

Regional Hay

Friday, March 16
Report supplied by PDA
(All hay No. 2 and better, prices paid by dealers at the farm and per ton.)
Hay and Straw mostly steady.
Alfalfa 100.00-135.00; Mixed hay 70.00-95.00; Timothy hay 60.00-90.00; Straw 60.00-85.00; Mulch 40.00-60.00

Dewart Hay

Dewart, Pa.
Monday, March 19
Report Supplied by Auction
21 loads of hay and five loads of straw.
Mixed 61.00-89.00; Alfalfa 126.00-135.00; Straw 65.00-70.00; Wood 29.00-84.00 per load; Clover seed 44.50 per bu.

Green Dragon Hay

Ephrata, Pa.
Friday, March 16
Report supplied by PDA
135 Loads Hay and 48 Loads Straw.
Alfalfa 101.00-175.00, mostly 117.00-162.00; Mixed hay 90.00-131.00, few 163.00; Timothy hay 101.00-119.00; Clover, one load 114.00; Straw 88.00-116.00; Ear Corn, 13 loads 125.00-136.00; Oats, 6 loads 2.65-2.80 per bu., one ld. 3.20.

Pa. Grain

Monday, March 19
Report supplied by PDA
Compared with last Monday's market for Southeastern, Central and South Central, PA. Corn,

steady to 10 cents higher, Wheat & Ear Corn steady, Barley & Oats unevenly steady.

Prices paid delivered to dealers dock - (All prices per bushel, except Ear Corn per ton.)

Southeastern Pa.

Corn No. 2-y range 3.60-4.00, most. 3.70-3.93, average 3.81, New Crop 2.80-3.03; Wheat No. 2 range 3.50-3.90, average 3.71, New Crop 3.33-3.54; Barley No. 3 range 2.60-3.10, average 2.80, New Crop 2.10-2.30; Oats No. 2 range 2.40-2.70, average 2.56; Soybeans No. 1 range 7.40-7.74, average 7.60, New Crop 6.89-7.04; Gr. Sorghum #2 range 3.40, average 3.40, New Crop 2.40; Ear Corn range 92.00-115.00, few reported 120.00; average 103.55.

Central Pa.

Corn No. 2-y range 3.60-3.80, average 3.68; Wheat No. 2 range 3.60-3.85, average 3.76; Barley No. 3 range 2.50-2.80, average 2.66; Oats No. 2 range 2.25-2.50, average 2.40; Soybeans No. 1 range 6.50-7.00, average 6.82; Ear Corn range 96.00-114.00; average 103.08.

South Central Pa.

Corn No. 2-y range 3.60-3.85, average 3.66; Wheat No. 2 range 3.40-3.65, average 3.52; Barley No. 3 range 2.50-3.00, few reported 3.25, average 2.83; Oats No. 2 range 2.30-2.60, few reported 2.80, average 2.52; Ear Corn range 98.00-130.00, average 115.50.

Southeastern, Central & South Central Summary

Corn No. 2-y range 3.60-3.93, average 3.74; Wheat No. 2 range 3.50-3.85, average 3.68; Barley No. 3 range 2.50-3.10, average 2.76; Oats No. 2 range 2.25-2.70, average 2.47; Ear Corn range 94.00-125.00, average 106.42.

Western Pa.

Corn No. 2-y range 3.25-3.90, most. 3.35-3.70, average 3.56; Wheat No. 2 range 3.20-3.25, average 3.23; Oats No. 2 range 2.20-2.50, average 2.34; Ear Corn range 85.00-95.00, average 90.00.

NEW HOLLAND SALES STABLES, INC. - THE ACTION AUCTION

MONDAY

FAT HOGS



EARLY BIRD HOG SALE

For Your Protection Your Hogs Must Be Identified

10:00 AM

HORSES



MULES

11:00 AM



HAY
STRAW
GRAIN

1:30 PM

BEEF SALE
CALF, SHEEP,
GOATS



WEDNESDAY

12:00 NOON

DAIRY



COWS

HEIFERS, BULLS

NEW HOLLAND SALES STABLES, Inc.

12 Miles East of Lancaster
on Route 23, New Holland, Penna

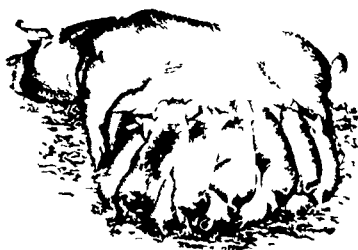
The Action Auction
717-354-4341

Mgr. - Abe Diffenbach - 717-393-4464
Norman Kolb - 717-397-5538

Field Representatives
Alan Diffenbach 717-656-9806
Luke Eberly 215-267-6608 - 738-1865

WEDNESDAY

FEEDER PIG SALE
1:30 P.M.



We endeavor to keep our
barns cleaner than yours.
State graded until 12 Noon

THURSDAY

11:00 AM

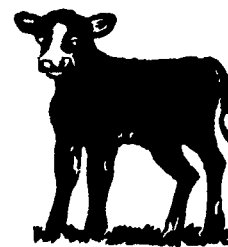
BULLS -



STEERS -
BEEF COWS

3:30 P.M.

CALVES



SHEEP
GOATS



Market your livestock thru New Holland Sales, your neighbor does
Pick-up your check before you leave