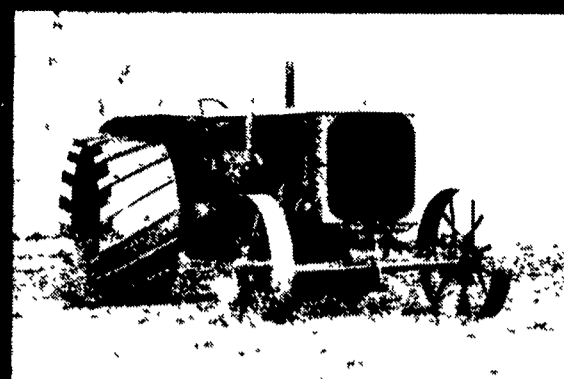


1914 Model 10-18



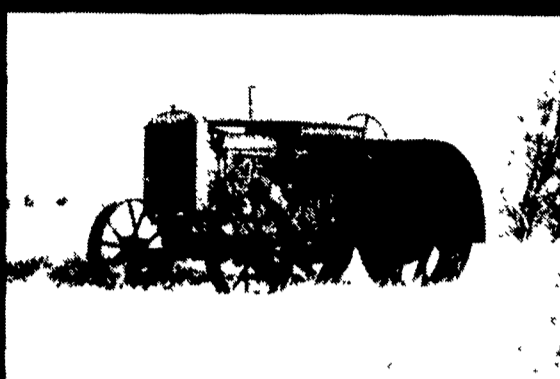
1919 Model 6-12



1920 Model 18-30



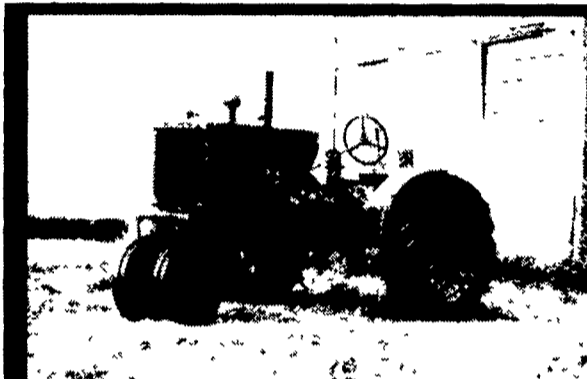
1921 Model 12-20



1921 Model 15-25



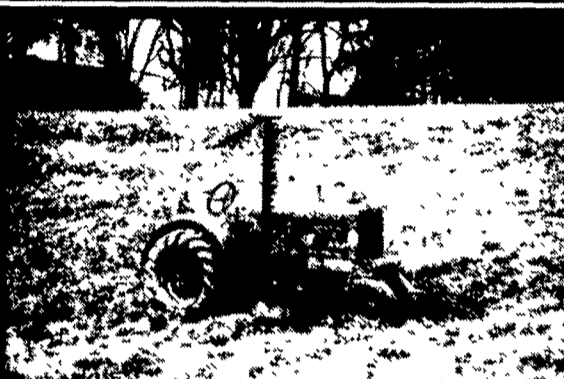
1926 Model 20-35



1930 Model UC



1932 Model U



1934 Model WC



1936 Model A



1938 Model B



1946 Model G



1948 Model WD



1959 Model D-10



1961 Model D-19



1964 Model 190



1973 Model 7080



1982 Model 8070

From the first 10-18 tractor that in 1914 offered one forward speed plus reverse till today's 8000 Series with 20 forward and 4 reverse speeds, Allis-Chalmers seventy years of service to farmers have

been marked by innovative milestones in tractor engineering. When coupled with a reputation for performance, ease of servicing, fuel economy and cab comfort, these advances have meant more

productivity at a lower cost. Back in 1913 when A-C's dynamic president, General Otto H. Falk, was looking for a way to diversify his manufacturing firm, the rapidly mushrooming market for

tractors caught his eye and led to the development of the 10-18 — the firm's first entry into the highly competitive field. This three-wheeled, tricycle type tractor tipped the scales at 4800

pounds. A two-cylinder, horizontally opposed engine delivered a whopping 10 hp at the drawbar and 18 at the belt. Two fuel tanks supplied gasoline for  
(Turn to Page 15)