

Grumelli Farm Service has expanded since 1951 beginning

Anthony and Victor Grumelli have sold nearly every size tractor Allis-Chalmers ever made since they took over Milton Mann's farm equipment business in 1951 and changed the name to Grumelli Farm Service. Milton O. Mann originally built the business in 1940.

Since taking over the business in 1951, the Grumelli's have enlarged the shop at Quarryville Route 2 three times and have built two new warehouses. In the late 1950's they purchased a roll-back truck which, they said, turned out to be a real man saver.

Before Allis-Chalmers discontinued hay and forage equipment, Grumelli Farm Service was one of Lancaster County's largest dealers in such equipment.

Anthony and Victor are the principal figures in the business. Prior to their careers in farm machinery, they were both servicemen in World War II. Anthony was with the 14th U.S. Air Force in China for three years and flew the "Hump" from India to China.

Victor spent five years in the Air Force in the Philippines in charge of Motorpool. Upon leaving the service, Anthony wanted to enter the field of automobiles, but instead went into the farm machinery business.

The Grumelli's attribute their business success to their loyal customers, some of whom they have served for over 30 years, and to their employees, each of whom makes a vital contribution to the business.

Members of their staff include: Anthony D. Grumelli, sales manager; Victor E. Grumelli, service manager; George A. Grumelli, Jr., parts manager; Clarence Herr, Daryl Hildebrand and Harry Ressler, salesmen; and Charles Kachel and Donald Young, engine and transmission mechanics. Also on the staff are: John Smith, John Wiles, Edwin Stoltzfus and John Riley, repair and setup; Edith Mann, bookkeeper; and Arlene Thomas, office clerk.

Forshey's approaches half-century with A-C

Albert Forshey founded his feed business at 110 Forshey St., Martinsburg, in 1932, taking on an Allis-Chalmers franchise in 1936.

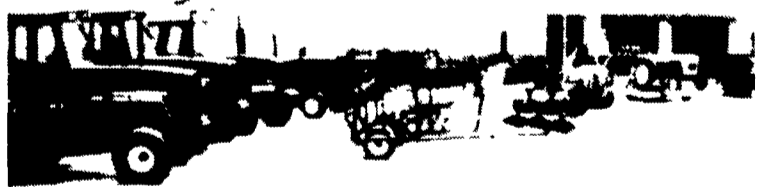
Upon Albert's death on April 10, 1956, ownership of Forshey's Feed and Implement was transferred to his wife, Elizabeth, with the couple's two sons, Dean and Richard, assuming management responsibilities.

The firm experienced a major setback in 1968 when fire destroyed

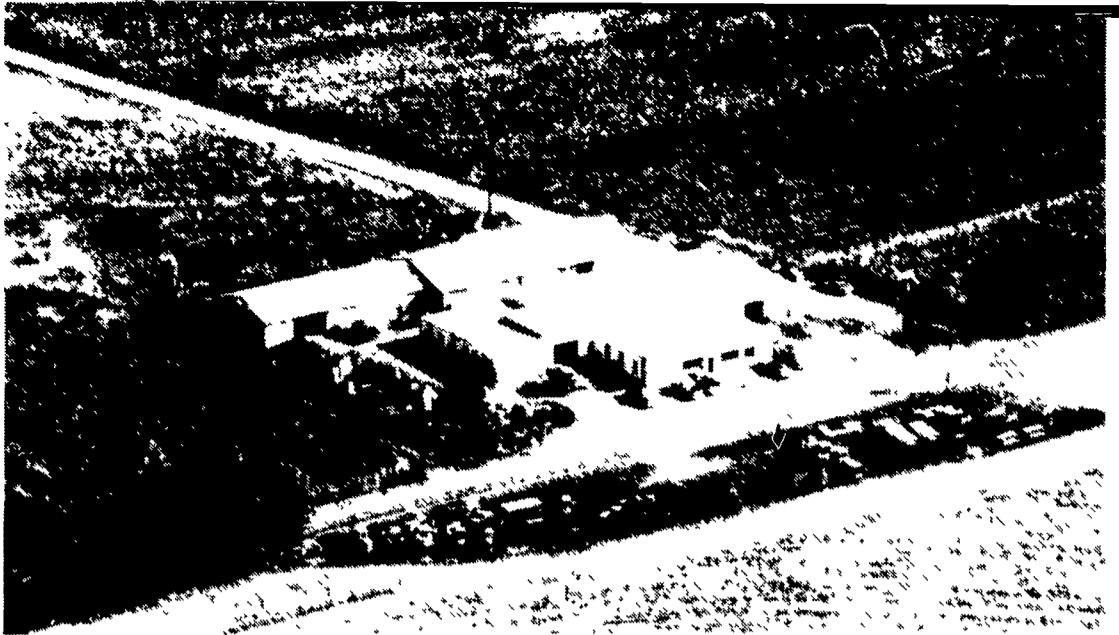
the premises. At this time Forshey's Feed and Implement, become Forshey's Inc., as the business was reconstructed solely as an equipment dealership.

With the death of their mother in 1974, Dean and Richard became the new owners.

Other key personnel among the firm's 11 employees include service manager Kenneth Forshey, and parts manager James Bowser, Jr.



Forshey's Inc., of Martinsburg, has been selling and servicing Allis-Chalmers equipment for 48 years.



Grumelli Farm Service, Quarryville Route 2, has been serving southern Lancaster County farmers for 33 years.

ALLIS-CHALMERS 6060/6080 TRACTORS...

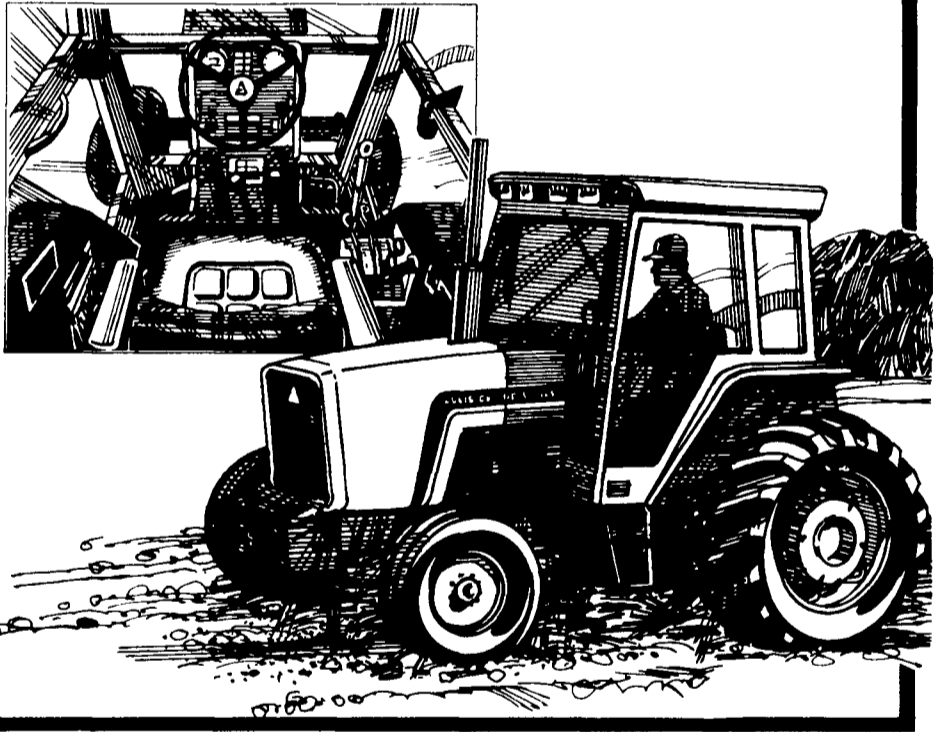
Cab comfort that softens up hard work days.

The cab that tops the Allis-Chalmers 6060 (63 PTO hp*) and 6080 (83 PTO hp*) performance leaders makes them the comfort leaders, too

- Rubber isolation mounts separate the cab from chassis vibration. Fully insulated against engine noise, external dust and exhaust
- Visor roof keeps out glare and heat and improves air-conditioner efficiency

- Optional deluxe suspension seat is fully adjustable
- Plenty of room and outstanding visibility with 40 square feet of tinted glass
- Easy-to-reach controls make operating a pleasure
- 60-inch wheel tread capability even with 18.4 tires

*Manufacturer's estimated maximum observed PTO horse power at rated engine speed



Better
by Design

ALLIS-CHALMERS

USED TRACTORS

AC 7040D	AC 200	AC CA
AC 7045D	AC XT190D	AC WD 45
AC 7050D	AC 180D	AC 5040D
AC 7020D	AC 170D	AC 5050D
AC 7010D	AC 175D	IH 806
AC 7000D	AC D19D	IH 300
AC 440	AC D14	IH 340

IH Cub Low Boy	JD 70	Case 800
IH 350	JD A	Case 450
IH H	MF 65D	Crawler/Loader
IH 140	MF 65G	Oliver 1650D
JD 2010	Case 1490	
JD 4010	Case 300 w/Loader	

USED EQUIPMENT

New and Used Miller Discs and AC Discs
 14T J.D. baler and engine
 AC 444 baler and engine
 Farmhand grinder & blower
 (2) L 425 NH Skid Loaders
 731 Bobcat Skid Loader
 610 Bobcat Skid Loader
 630 Bobcat Skid Loader
 1000 OMC Skid Loader
 371 Bobcat Skid Loader
 Thomas Skid Loader
 MC 600 Grain Dryer
 65" 8" transport Auger
 AC L, M, F, G&A Combines
 NH 890 Chopper w/2 or 3 Row Head & Pickup Head
 IH 830 Forage Harvester
 Uni Harvester 708 & 702

GRUMELLI FARM SERVICE
 Quarryville, Pa. 717-786-7318

