

# Tioga Co. DHIA

(Continued from Page D25)

OWNER	BREED	NO. COWS	% DAYS IN MILK	LBS. MILK	LBS. FAT
Robert Shanley #120	6 5	305	22 407	3 6	817
Sharlene M Clark #50	5 9	305	20 390	4 0	816
#16	4 5	305	21 517	3 7	795
Tom Bower #148	2-11	305	17,751	4 6	810
Dean Barty Nikki	4 3	294	19,622	4 1	803
Rosa	4 8	305	23,902	3 3	790
Gerald Parker Hill	4-3	305	18,546	4 3	803
Alpha E Monk Jr Taffy	3-8	305	21,000	3 8	799
Gordon M Wood #1 Ivory	5 3	302	24 371	3 3	797
Libya	5 2	305	20 381	3 8	778
David Weaver Jess	9 10	305	22 388	3 6	797
Tulip	4 0	305	21 428	3 7	787
Jet	5 7	305	18 591	4 2	772
Edward&Carol Robbins #96	7 8	305	17 939	4 4	795
Dan Bower #4	5 3	305	16 667	4 8	793
Dale E Allen #325	4 8	305	22 162	3 5	785
Marilandacres #58	7 4	305	22 257	3 5	783
Willys Hamilton #147	3 3	285	18 948	4 1	781
#127	5 9	305	22 601	3 4	777
Charles D Groover Jane	3 4	305	17 166	4 5	776
Paul&Emma Machmer #7	5 0	305	23 383	3 3	774
Paul&Phil Gorda #15	0 0	305	18,828	4 1	773
Wm&Wendy Sturges Jane	4 9	305	21,112	3 7	772
Charles F Johnson #14	5 4	298	12,774	6 0	772
Roland&Joan Kehres Rebel71	6 4	290	20,273	3 8	765
Perry&Eric Anderson Tillie	9 6	305	19 493	3 9	763
Dennis&Donna Moyse Canary	6 4	305	19,581	3 9	758
Jenkins&Pazzaglia #28	7 6	305	19 317	3 9	756
Eric Dixie Coolidge #63	7 11	299	18 985	4 0	751

### LUZERNE COUNTY DHIA February Report

OWNER	BREED	NO. COWS	% DAYS IN MILK	LBS. MILK	LBS. FAT
Robert Hough	RH	53 5	87 7	18 015	685
Pecora Bros	R&GrH	159 7	87 4	18 379	660

OWNER NAME OR NUMBER	BREED	AGE	NO IN MILK	LBS. MILK	% FAT	LBS. FAT
Wm Dagostin & Son 47	RH	4 5	305	21 617	3 5	762
Robert Hough Pattiel	RH	7 11	305	24 941	4 4	1105

# Huntingdon County DHIA Monthly Report

February, 1984

### Top Herds - Rolling Herd Averages

OWNER	BREED	NO. COWS	% DAYS IN MILK	LBS. MILK	% FAT
Evergreen Fm No 3	3	382 7	85 1	18 584	782
Edwin Steach	3	70 3	87 3	20,547	768
Gerald McMath	3	71 6	89 5	19,486	711
Daland Farms	3	107 1	86 5	18 808	709
Joseph M McMath	3	54 3	88 2	18 675	702
Greg&Nancy Yocum	3	26 6	90 1	16,980	680
Gibboney Farms	3	55 4	87 0	18 647	676
Glenn Peachey	3	76 9	88 5	18 351	671
Locust Lane Farm	B3	85 2	85 3	17,879	666
State Correctional Inst	3	160 2	87 1	15,679	664
Howard&Nancy Wiggin	B3	71 3	84 8	18,560	664
John S Kyper	B3	41 5	87 2	17 727	659
Branstetter Farms	B3	54 9	86 6	17 793	658

OWNER NAME OR NUMBER	BREED	AGE	DAYS IN MILK	LBS. MILK	LBS. FAT
Evergreen Farm No 3 1309	3	5 3	305	26,699	1162
1426	3	4 3	305	23 182	1102
1567	3	3 8	305	20,993	980
1267	3	5 2	305	24,755	944
1572	3	3 0	300	18,330	938
1573	3	3 0	291	20,649	879
1404	3	4 2	305	20,639	878
827	3	8 10	305	18 675	876
1353	3	4 5	305	26,854	862
1265	3	5 3	305	18 189	817
1566	3	3 5	300	21 270	805
1387	3	4 8	302	18 918	792
1574	3	3 1	298	18 641	772
1370	3	4 6	242	14 965	753
Edwin Steach 30	3	6 4	305	29 488	954
Marsha	3	6 7	305	23 720	821
State Correctional Inst 488	3	4 5	305	22 577	909
452	3	4 10	305	19,308	798
Ed & Sharon Parsons 59	3	3 5	299	21 073	903
Glenn Peachey Pearl	3	4 4	305	22 270	882
Hickle	3	6 7	305	19 983	814
Edna	3	7 2	305	21 875	775
Hagar	3	4 0	305	21 831	773
Toby	3	4 7	305	20 417	770
Gerald McMath Bertha	3	7 6	305	20 624	876

Mary	3	6 4	305	23 770	791
Duane & Carolyn Eberly 9	3	4 0	305	21 535	821
Willard Yoder 378	3	4 6	303	20 746	815
201	3	7 1	305	20 035	782
Behrer Farms 254	3	2 9	305	19 904	811
213	3	5 9	305	21 609	758
185	3	4 2	305	19 930	753
Edward H Quigley Blkok 21	3	0 0	305	17 950	805
Daland Farms Honeybe	3	3 1	305	21 122	803
Geary E Shade Mini	3	3 7	305	20,932	796
Snoflak	3	4 3	305	23 101	782
John S Kyper 33	3	3 6	305	20 849	786
48	3	3 7	305	20 640	771
Max Isenberg Rebecca	3	6 1	305	22 643	784
E James McMath Pride	3	7 1	305	19 394	768
Globe Run Farms Minny	3	4 7	305	22 706	758

### SULBRA DHIA January, 1984

### Rolling Herd Averages (600 Lbs Butterfat and Over)

NAME	BREED	NO. COWS	% COW DAYS IN MILK	LBS. MILK	LBS. FAT
Raymond Norconk	3	41 8	85 6	17 971	694
Geo & Wm Lambert	3	116 8	89 6	18 552	690
William Hottenstein	3	51 7	83 6	18 329	675
Dennis Vickie Boyd	3	31 1	87 3	20 010	668
Richard R Higley	3	82 8	80 3	16 519	662
Ronald Hembury	3	75 6	87 3	17 339	661
Joan M Woodhead	3	25 8	88 5	17 103	653
C E Arey & R Coombs	3	42 7	88 3	17 023	628

### Completed Lactations of 700 Pounds or More of Butterfat

OWNER NAME OR NUMBER	BREED	AGE	DAYS IN MILK	LBS. MILK	LBS. FAT	
Ronald Hembury Daggy	3	6 1	305	20,677	4 9	1017
Tulip	3	6 4	305	25 025	3 6	908
BigSue	3	5 9	305	22 678	3 6	812
Adeline	3	4 0	305	22,866	3 4	780
Jenifer	3	4 4	305	20 958	3 4	706
R L & Tracy McCarty Cleo	3	9 0	305	23 059	4 0	913
Richard R Higley B Eve	3	5 4	305	23 673	3 8	902
Libby	3	2 11	305	27 177	3 1	849
Geo & Wm Lambert Karry	3	5 5	305	20 152	4 3	857
Delia	3	6 6	305	25 720	3 3	847
Blackie	3	9 8	305	19 230	4 1	794
Raymond Norconk Lana	3	6 4	305	21 439	3 7	784
William Hottenstein Prudenc	3	6 5	305	21 912	3 5	775
Lucia	3	4 3	305	21 931	3 4	751
Dennis Vickie Boyd Jenny	3	7 2	305	26 658	2 8	753
Ed Campbell Lilliam	3	8 11	305	18 891	3 9	728
Randy Heess 14	3	3 6	305	20 811	3 4	711

**IMPROVE FEED PALATABILITY AND PROFITABILITY BY USING LIQUID AND DRY MOLASSES PRODUCTS IN YOUR FEED FORMULATION FOR ANIMALS FROM ZOOK MOLASSES CO.**



- Liquid Feeding Cane Molasses
- Honey Brook Brand Dried Molasses - 50 lb. Bag
- Z Brand Dried Molasses - 50 lb. Bag
- Honey Brook Energiblock - All Natural 20 - No. Urea
- Energiblock --Hi Protein 36
- Energi Cubes for Horses

## ZOOK MOLASSES CO.

WEST MAIN ST., BOX 160, HONEY BROOK, PA. 19344  
Phone 215-273-3776 or 717-393-3987  
Call toll free in area code 215 & 717 800-662-7464

### GOLDEN BARREL PRODUCTS Household Molasses and Syrup

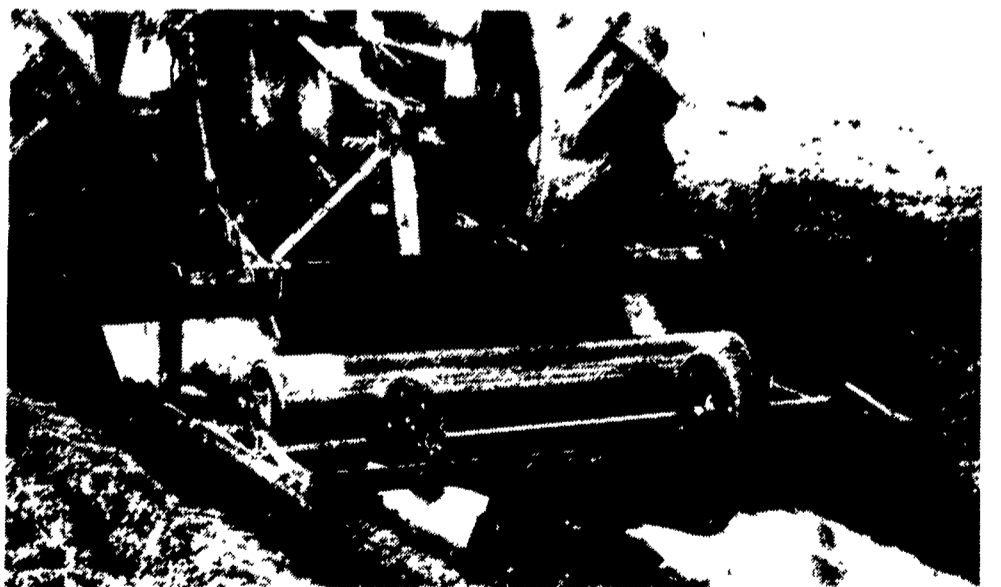
- ★ BAKING MOLASSES
- ★ PANCAKE SYRUP
- ★ CORN SYRUP
- ★ WORCHESTERSHIRE SAUCE
- ★ BARBADOS MOLASSES
- ★ HONEY
- ★ SORGHUM SYRUP
- ★ BLACKSTRAP MOLASSES
- ★ TABLE SYRUP
- ★ SHOO-FLY PIF MIX

If your local store does not have it, contact:

## GOOD FOOD INC.

WEST MAIN ST., BOX 160, HONEY BROOK, PA. 19344  
Phone 215-273-3776 or 717-393-3987  
Call toll free in area code 215 & 717 800-662-7464

## Introducing MECHANICAL'S NEW FAST-EASY TO USE-ECONOMY MULCH LAYER Model 85



This all new Mulch Layer is designed for laying 3' or 4' plastic. It's the easiest Mulch Layer to use on the market. Just feed the mulch under the large roller then simply adjust the covering scrapers. That's it. The Model 85 lays the plastic firm and tight on a leveled and rolled planting surface. The best news is it's lower price.

We recommend our fully adjustable Model 90 Mulch Layer for those growers using other width plastic and for laying tunnel plastic over hoops. (Patent Pending)

## MECHANICAL TRANSPLANTER COMPANY

Box 1008B • 1150 S. Central at U.S. 31  
Holland, Michigan 49423 Phone AC 616-396-8738