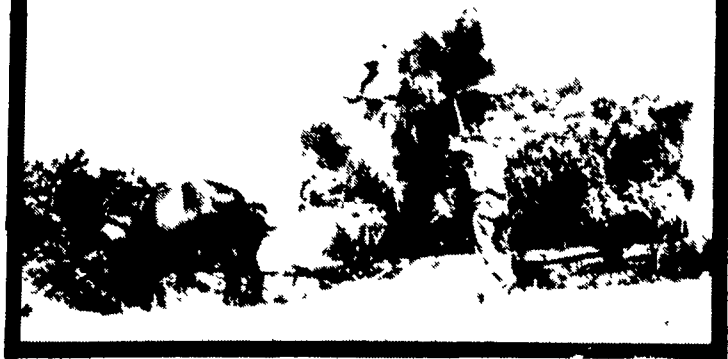


HAY MARKETS



Regional Hay

Friday, March 9

Report supplied by PDA

(All hay No. 2 and better, prices paid by dealers at the farm and per ton.)

Hay and Straw steady.

Alfalfa 100.00-135.00; Mixed hay 70.00-95.00; Timothy hay 60.00-90.00; Straw 60.00-80.00; Mulch 40.00-60.00.

Green Dragon Hay

Ephrata, Pa.

Friday, March 9

Report supplied by PDA

36 Loads Hay and 13 Loads Straw.

Alfalfa 95.00-146.00, one load 165.00; Mixed hay 82.00-147.00, mostly 97.00-109.00; Timothy hay, 2 loads 96.00 & 110.00; Reed Canary grass, 2 loads 119.00 & 124.00; Straw 90.00-111.00; Ear Corn, 6 Loads 119.00-129.00.

Dewart Hay

Dewart, Pa.

Monday, March 5

Report supplied by PDA

6 Loads Hay.

Mixed hay 76.00-88.00.

Belleville Hay

Belleville, Pa.

Wednesday, March 7

Report supplied by PDA

65 Loads Hay and 13 Loads Straw.

Alfalfa 100.00-150.00; Mixed hay 60.00-142.00, mostly 70.00-97.50; Straw 65.00-80.00.

King's Auction

Tuesday, March 13, icy day

Report supplied by auction

26 loads.

Alfalfa 122.00-152.00; Alfalfa Mixed 116.00-145.00; Timothy 95.00-120.00; Grass Hay 115.00-125.00; Grass Mixed 109.00-148.00; Straw 99.00-104.00; Firewood 33.00-37.00 per load.

Good's Hay

Leola, Pa.

Wednesday, March 14

Report supplied by auction

112 loads.

Mixed Hay 101.00-157.00; Straw 96.00-118.00; Alfalfa 102.00-167.50; Timothy 117.00-149.00; Corn 122.00-135.00; Clover 136.00.

Leinbach's Hay

Shippensburg, Pa.

Sat., Mar. 10 & Tues., Mar. 13

Report supplied by auction

48 loads.

Alfalfa 117.50-160.00; Mixed Hay 92.50-127.50; Timothy 77.50-108.00; Bromegrass 77.50-100.00; clover 100.00-127.50; Orchard Grass 85.00-100.00; Straw 67.50-84.00; Ear Corn 134.00-137.00; Firewood 27.50-40.00; Locust posts 2.00-2.10 each.

New Holland Hay

New Holland Sales Stables

Monday, March 12

Report supplied by auction

Compared to last week, market strong on hay and straw; corn steady and choice Alfalfa 5.00-10.00 per ton higher.

271 loads.

Alfalfa choice 2nd and 3rd cutting, 140.00-160.00, few up to 172.00, 1st cutting mostly 110.00-120.00, a few off color loads, 90.00-100.00.

Mixed Alfalfa Timothy, several choice loads, 135.00-150.00; Clover Timothy Mix, 110.00-125.00, few off quality around 100.00; Timothy, 104.00-125.00, few up to 134.00; Clover, 97.00-109.00.

Straw, mostly 100.00-106.00, few up to 115.00, few off color, under 100.00; Ear Corn, 123.00-141.00; Oats, 2.82 per bushel; Peanut Hulls, 72.00 per ton; Timothy Seed, 20.00-21.00 per bushel; Sawdust, 19.00 per ton; Firewood, 46.00-49.00 per pick-up load.

Hagerstown Hay

Martin's Elevator

Wednesday, March 14

Report supplied by auction

17 loads.

Alfalfa 141.00-169.00; Alfalfa-Grass 128.00; Clover & Timothy 98.00; Timothy 90.00-121.00; Orchardgrass 103.00-109.00; Grass Hay 75.00-99.00; Straw 87.00; Fodder 35.00.

Frederick Co. Hay

Buckeystown, Md.

Thursday, March 15

Report supplied by auction

71 loads; market steady to \$10.00 stronger on hay and steady on straw.

Alfalfa 10 good to fancy 152.00-166.00, 5 fair to good 117.50-147.50, 3 fair 95.00-100.00; Alfalfa Mixed 2 fair to good 136.00-156.00; Timothy 12 good to fancy 120.00-136.00; 5 fair to good 115.00-119.00; Mixed 8 fair to good 110.00-141.00; Mixed grass 3 fair 90.00-99.00; clover second cutting 135.00-140.00; Straw 10 bright 80.00-91.00, 3 good 75.00-77.50; Firewood 5 loads some hard 47.50-66.00 per cord; Locusts Posts round 2.45 ea.

Greencastle Hay

Greencastle, Pa.

Monday, March 12

Report supplied by auction

32 loads.

Alfalfa 101.00-155.00; Alfalfa Mixed 156.00; Mixed 101.00-120.00 and one load at 33.00; Timothy 95.00-110.00; Bromegrass 117.00; Oat Straw 68.00; Straw 67.00-74.00; Fodder 49.00.

Keister's Hay

Middleburg, Pa.

Tuesday, March 13

Report supplied by auction

27 loads.

Mixed Hay 72.50-117.50; Mulch 52.50; Straw 70.00-82.50; Ear Corn 110.00; Firewood at 29.00-67.50 per load.

Pa. Grain

Monday, March 12

Report supplied by PDA

Compared with last Monday's market for Southeastern, Central and South Central, PA Corn, steady to 15 cents higher; Wheat steady to strong, spots 25 cents higher; Barley & Oats mostly

steady; Ear Corn steady to strong.

Prices paid delivered to dealers dock - (All prices per bushel, except Ear Corn per ton.)

Southeastern Pa.

Corn No. 2-y range 3.60-3.88, average 3.77, New Crop 2.82-3.02; Wheat No. 2 range 3.55-3.90, average 3.70, New Crop 3.35-3.55; Barley No. 3 range 2.60-3.00, average 2.79, New Crop 2.20; Oats No. 2 range 2.40-2.60, average 2.54; Soybeans No. 1 range 7.52-7.71, average 7.59, New Crop 6.95-7.00; Gr. Sorghum range 3.30, average 3.30, New Crop 2.30, Ear Corn range 92.00-115.00, few reported 125.00; average 103.75.

Central Pa.

Corn No. 2-y range 3.60-3.80, average 3.67; Wheat No. 2 range 3.60-3.80, average 3.73; Barley No. 3 range 2.50-2.80, few reported 2.30, average 2.63; Oats No. 2 range 2.25-2.50, average 2.40; Soybeans No. 1 range 6.50-7.00, average 6.78; Gr. Sorghum range 3.40, average 3.40; Ear Corn range 100.00-108.00; average 102.30.

South Central Pa.

Corn No. 2-y range 3.55-3.80, average 3.65; Wheat No. 2 range 3.40-3.65, average 3.52; Barley No. 2 range 2.25-3.25, most 2.50-3.00, average 2.79; Oats No. 2 range 2.30-2.70, few reported 3.00, average 2.58; Ear Corn range 100.00-130.00, average 113.63.

Southeastern, Central & South Central Summary

Corn No. 2-y range 3.60-3.85, average 3.71; Wheat No. 2 range 3.50-3.90, average 3.67; Barley No. 3 range 2.50-3.00, average 2.74; Oats No. 2 range 2.25-2.60, average 2.48; Ear Corn range 95.00-125.00, average 106.46.

Western Pa.

Corn No. 2-y range 3.35-3.75, average 3.57; Wheat No. 2 range 3.25-3.30, average 3.28; Oats No. 2 range 2.10-2.50, average 2.28.

NEW HOLLAND SALES STABLES, INC. - THE ACTION AUCTION

MONDAY

FAT HOGS

EARLY BIRD HOG SALE

For Your Protection Your Hogs Must Be Identified

10:00 AM

HORSES MULES

11:00 AM

HAY
STRAW
GRAIN

1:30 PM
BEEF SALE
CALF, SHEEP,
GOATS

WEDNESDAY

12:00 NOON

DAIRY COWS

HEIFERS, BULLS

NEW HOLLAND SALES STABLES, Inc.

12 Miles East of Lancaster
on Route 23, New Holland, Penna

The Action Auction

717-354-4341

Mgr. - Abe Diffenbach - 717-393-4464

Norman Kolb - 717-397-5538

Field Representatives

Alan Diffenbach 717-656-9806

Luke Eberly 215-267-6608 - 738-1865

WEDNESDAY

FEEDER PIG SALE

1:30 P.M.



We endeavor to keep our
barns cleaner than yours.
State graded until 12 Noon

THURSDAY

11:00 AM

BULLS -



STEERS -
BEEF COWS

3:30 P.M.

CALVES



SHEEP
GOATS

Market your livestock thru New Holland Sales, your neighbor does

Pick-up your check before you leave