

Dairylea

SPECIAL INFORMATIONAL MEETINGS

Co-Sponsored By
EASTERN MILK PRODUCERS & DAIRYLEA

Important meetings for all dairy farmers. A cooperative economist will review the current dairy situation and outlook for 1984, and the current status of the dairy price support program. Other issues of importance will be discussed.

Light refreshments will be served. All dairy farmers are urged to attend. Bring your neighbor and participate.

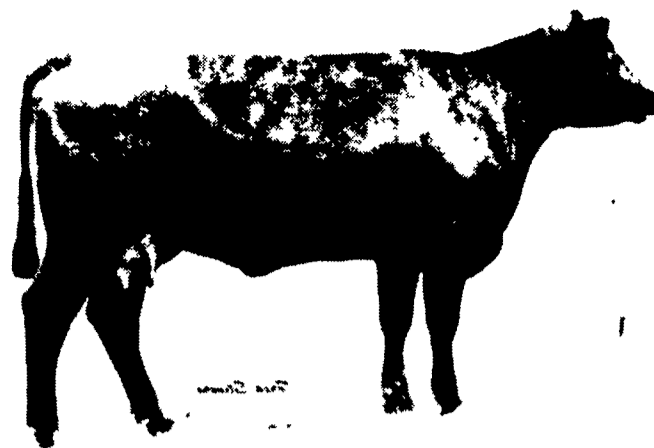
Check for the meeting location nearest you:

March 21 Whitneyville, PA - Whitneyville Youth Center, 1 p.m.
Kingsley, PA - Mountain View High School, 8 p.m.
Mifflingburg, PA - Middle School Cafeteria, 8 p.m.

March 22 Honesdale, PA - Pleasant Valley Grange, 1 p.m.
Wysox, PA - Wysox Fire Hall, 1 p.m.



EASTERN MILK PRODUCERS
COOPERATIVE ASSOCIATION, INC.
Kinne Road, Syracuse, New York 13214



Skarship Kinannie's unborn ET calf was second highest seller at the 'Angus On Parade' sale at Harrisburg.

Harrisburg hosts 'Angus on Parade'

BY JACK HUBLEY
HARRISBURG — Top selling animal at the Pennsylvania "Angus on Parade" sale held at the Farm Show Building March 9, was CLK Ida 383, a January 83 heifer owned by Krause Angus, Slatington.

A daughter of Pine Drive Big Sky, Ida was purchased by Walnut Lake Farm, of Wells, Minn., for \$4,000.

An embryo transplant (ET) calf yet to be born, brought the second highest price of the day, of \$3,400, paid by Twin Clay Angus of Kennett Square. The ET calf's donor is Skarship Kinannie, a daughter of Sayre Patriot, owned by Genetics Unlimited Inc., of West Grove.

Twin Clay's bid entitles it to the choice of the mating of Kinannie to either Premier Independence or Pine Drive Big Sky.

At \$3,000, PS Key Play 308, owned by Penn State, took honors as the highest selling bull. Purchased by Nelson Farms, of Iowa, Key Play is a January 1983 son of PS Power Play.

With 38 consignors registered for this fourth "Angus on Parade" sale, bidding was active, resulting in gross receipts of \$86,735 for an average of \$1,156 for each of the 75 head sold.

Other top selling animals in-

cluded: an unborn ET calf from PS Northern Princess 285, owned by Penn State and purchased for \$2,800 by Premier Beef of Howell, Mich.; Koolspring Connection 128, a bull owned by Koolspring Farm of Mercer, and purchased by Nancy Bushy of Gettysburg for \$2400. Koolspring Connection is a son of the National Champion Rosebank Connection 69 — known as "10" — who reigned as Reserve Grand Champion Bull at the 1984 Farm Show.

The sale's high selling cow was GKF Idessa McHenry N261, consigned by Chester Hughes of Lancaster, and a daughter of Early Sunset Emulous. The cow was sold for \$1,800 to John Higgins of Belle Mead, N.J.

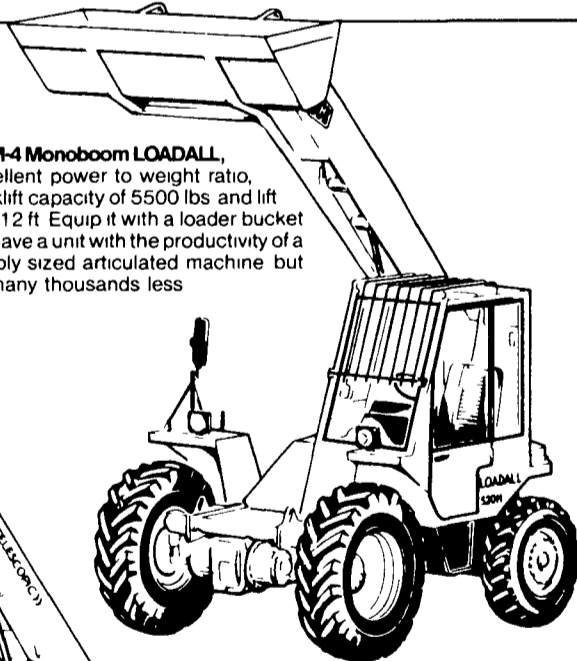
A benefit semen auction preceding the sale grossed \$2,860 to finance the activities of the Pa. Junior Angus Association. Donated by the Harrison Syndication of Fairfield, Calif., the high selling semen unit was purchased by Stivers Angus of Pittstown, N.J., for \$450.

During the sale activities several breeders pledged over \$3,000 to the second annual Pa. Angus Breeders Show, to be held July 14, at Center Hall.

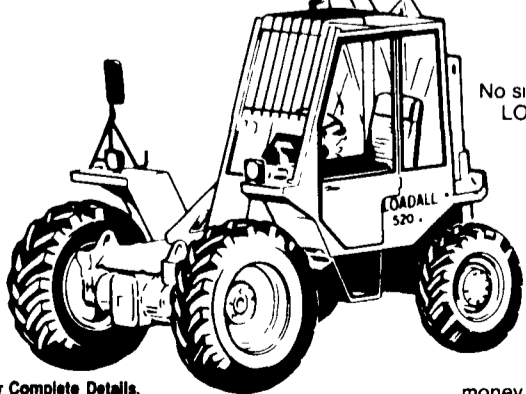
Auctioneers for the sale were Mike Jones and Harry H. Bachman.

LOADALLS do it all on the farm.

The 520M-4 Monoboom LOADALL, with excellent power to weight ratio, has a forklift capacity of 5500 lbs and lift height of 12 ft. Equip it with a loader bucket and you have a unit with the productivity of a comparably sized articulated machine but costing many thousands less.



The 520-4HL Telescopic LOADALL has a 12 ft reach and 4410 lbs capacity at a lift height of nearly 22 ft to stack hay, palletized materials or load high-side trucks and bins fast and easy.



JCB Telescopic and Monoboom LOADALLS . . . front runners in performance, versatility and cost-effectiveness.

No single machine can compare with a JCB LOADALL for total farm productivity, ease of operation and job versatility. There's a wide range of hydraulically-powered, quick-change agricultural attachments for multi-job applications. Choose from buckets up to 2½ cu yds for bulk materials, special clamps for bales, silage and manure forks, and forks for palletized loads of feed and fertilizer. Both machines come with 2 or 4 wheel drive for greater traction and mobility. Whichever you choose you won't find better value for your money anywhere, or more versatile machines.

Call or Send Today for Complete Details.

Please rush me full details of the range of JCB Loadalls. I am interested in a demonstration. Please send me details on JCB Flexlease financing.

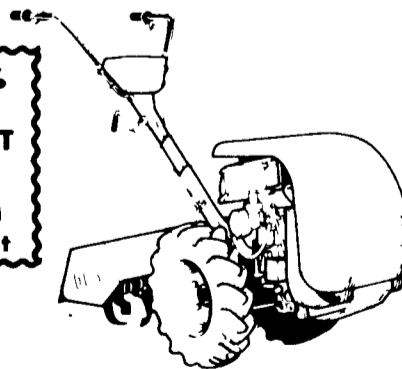
Name _____ Position _____
Company _____
Address _____
Telephone _____



JCB Inc.
10939 Philadelphia Rd.
White Marsh, MD 21162
(301) 335-2800

BCS: More than a Tiller . . .

15% to 20%
CASH
DISCOUNT
(Depending
On Model)
NOW THRU
MARCH 31st



Now you can have a tiller that's also a lot of other machines like a snow blower, rotary mower, and sickle bar cutter to name a few.

One unit that does many different jobs. That's the BCS. Come in and see for yourself.



FARMERSVILLE EQUIPMENT INC.

RD 4, East Farmersville Road
Ephrata, PA 17522
717-354-4271