

# Pa. Guernsey Breeders hold annual meeting

(Continued from Page A1)

Ag Arena, the Farm Show Building or the Timonium, Md., fairgrounds for shows and sales.

Because the selling of the building has brought mixed emotions, the board of directors opened the meeting for discussion. With information it compiles and feedback it receives, the board hopes to make "the right decision" at its meeting in May.

Comments heard from members during the discussion included:

- "We've reached a place where we're spending too much time on the building issue. We should be doing more to promote the breed."

- "The original intent of the building, selling cows, is often in conflict with contracts made with others to bring money into the building."

- "If many of us had losing projects on our farms, we'd get rid of them."

- "We purchased the pavilion when we were fat. We're not that fat now and we're losing. on the average, \$10,000 a year."

In addition to discussion on selling the building, Yost said another means of income would be

to increase cattle sales. The association had \$205,080 less in gross sales in 1983 than 1982.

Despite the bleak picture painted here, national director Janet Harding said that on a national basis, the breed is on the move. "We're going in the right direction," Mrs. Harding said.

The Guernsey breed is a leader in the fight against Johne's disease, Mrs. Harding said, and more research is underway for beta carotene. National sales are up and breed promotional efforts are increasing.

"I look for great progress in the near, next few years," she said.

Also on a positive note, assistant business manager Ruth Ann John said the state association has made strides in herd milk and fat production. In 1983, Pennsylvania had one herd over 15,000 pounds of milk, six over 14,000 pounds, 11 over 13,000 pounds, 17 over 12,000 and 15 over 11,000.

"Production-wise," Mrs. John said, "we're doing a real good job in the state."

Plaques were presented to the top four production herds during the association's annual banquet

March 9. The high herd award went to Kenneth and Thelma Garber of Willow Street, who's 63 cows averaged 15,143 pounds of milk and 681 pounds of fat. The high herd fat award was won by Henry Verbeke of Reynoldsville. Verbeke's 17 Guernsey's produced

14,556 pounds of milk and 718 pounds of fat.

The high cow for milk was Cedar Fringed Nesta, owned by Francis and Ethel Kirk of Peach Bottom. Nesta produced 23,830 pounds of milk and 956 pounds of fat. High fat cow was Falcons Corporal Rita.

Owned by Albert and Marian Hack of Berwick, Rita produced 19,223 pounds of milk and 982 pounds of fat.

All-American Guernsey honors went to: junior heifer, Keystone Big T Jade, owned by Roger and

(Turn to Page A24)



All-American Guernsey certificates are presented to, from left, Roger and Kathy Campbell, Jason Ivic, Antoinette Fava and Betty and Robert Smith.



State Dairy Princess Tammy Cree, left, and Columbia-Luzerne County Dairy Princess Karen Bissinger, right, present junior awards to Janice Garber, Antoinette Fava (accepting for daughter Raquelle) and Gerald Garber.

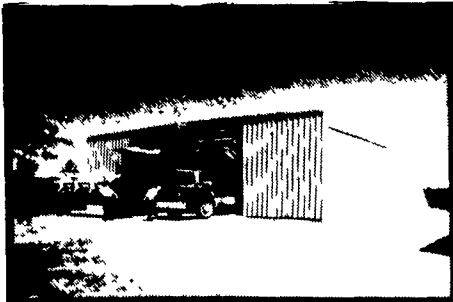


Guernsey productin award winners are, from left, Albert and Marian Hack, Vince Verbeke and Kenneth Garber.

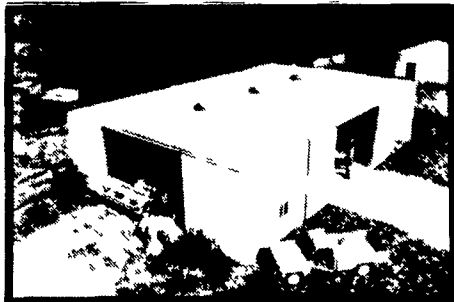


## BUILDINGS for FARM

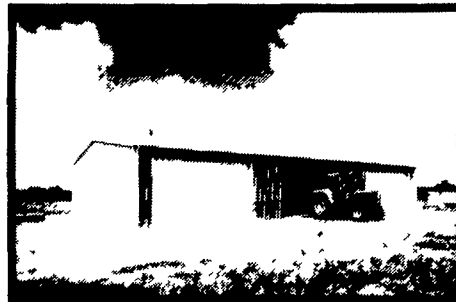
## FREE CAP & JACKET



FARMSTEAD I



FARMSTEAD II



AG MASTER 2:12



SHOP - STORAGE - GARAGE



# FREE CAP AND JACKET\*

\* Participating Agri-Builders Only

## TO QUALIFY FOR CAP & JACKET YOU MUST BUY YOUR AGRI-BUILDING

- \* Show You A Butler Building
- \* Take You On A Butler Building Tour
- \* Make A Bonafide Proposal

(Be sure to ask your Agri-Builder for a Special Discount From Butler)

PROGRAM ENDS 12/31/83

## NEW FROM BUTLER

Full Line Of Insulation  
See Your Butler Agri-Builder For Details

BUTLER MFG. CO.  
Attn P E Hess  
P O Box 337, Oxford, PA 19363



Dealer Inquiries Available in Pennsylvania Counties: Berks Schuylkill Armstrong Indiana Erie Crawford Warren Elk Cameron McKean Clinton Lycoming Sullivan Wyoming Luzerne Columbia Bradford Susquehanna Adams Cumberland York Potter Tioga New Jersey Counties Sussex Morris Passaic Atlantic Cape May Monmouth Middlesex Somerset Maryland Counties Talbot Dorchester New York Counties Orleans Genesee Monroe Livingston Allegany Steuben Yates Seneca Cayuga Tompkins Schuyler Tioga Chemung Broome Chenango Madison Lewis Oneida Herkimer Fulton Montgomery Otsego Delaware Schoharie Sullivan Orange Ulster Greene Chautauqua Cattaraugus

(No Dealers Fees.)  
Name \_\_\_\_\_  
Address \_\_\_\_\_  
County \_\_\_\_\_ Zip \_\_\_\_\_  
City \_\_\_\_\_ State \_\_\_\_\_  
Phone \_\_\_\_\_  
(Include area code)

## BUY OR LEASE

Bethlehem 20 YEAR WARRANTY

C & M SALES INC.  
R D #1  
Honesdale, PA 18431  
PH. 717-253-1612

NAZARETH BUILDING SYSTEMS, INC.  
P O. Box 47  
Nazareth, PA 18064  
PH. 215-759-1331

O. A. NEWTON & SON CO.  
Bridgeville, DE 19933  
PH. 302-337-8211

FOUR COUNTIES CONTRACTOR  
R.D., Box 249  
Coalport, PA 16627  
PH 814-672-5751

TRI-COUNTY AGRI-SYSTEMS  
R.D.#1, Box 5  
Swedesboro, NJ  
PH 609-467-3111

WEETER CONCRETE CONSTRUCTION  
P.O. Drawer V  
Knox, PA 16232  
PH: 814-797-5122

LEROY E. MYERS, INC.  
Route #1, Box 163  
Clear Spring, MD 21722  
PH: 301-582-1552

D. E. SMITH, INC.  
Mifflintown, PA 17059  
PH. 717-436-2151

GOMPFF CONSTRUCTION CO. INC.  
1841 Jerry's Road  
Street, MD 21154  
PH. 301-692-5350

TRI-STATE MFG. DIST. INC.  
Route 256  
Deale, MD 20701  
PH 301-867-1400