

Farm accidents

(Continued from Page D30)

as machinery: 22 percent.

After losses from machinery and falls, there is a lesser loss — 8.4 percent — related to livestock. Some 6 percent were automotive related. A broad category including all other types of farm

accidents accounted for 12 percent.

Although automotive accidents were the lowest reported in the study, many farm operators ignore the protection offered by seat belts. Almost half, 46.1 percent, reported they are never used; about half say they use them

“sometimes.” Only 4.8 percent, or about one in 20 said they always use a seat belt when driving a car or pickup.

Attempts to keep the family members alerted to fire proved gratifying in the Du Pont study. Almost 80 percent of the farm homes studied had smoke detectors. Some 45 percent had a fire extinguisher in the barn. More striking was the statistic showing that 80 percent of farm combines are equipped with a fire extinguisher.

Finally, the most tragic finding reported was that 17.5 percent of the farm operators said that either a family member or close neighbor had been injured or died in a farm accident within the past two years. In the case of lost-time accidents, the percentage was 74.7, almost three of every four reporting.

Livestock centennial

scheduled

WASHINGTON, D.C.

— Secretary of Agriculture John R. Block has invited producer and professional groups associated with the livestock industry to join with the U.S. Department of Agriculture in observing “100 years of animal health” during 1984.

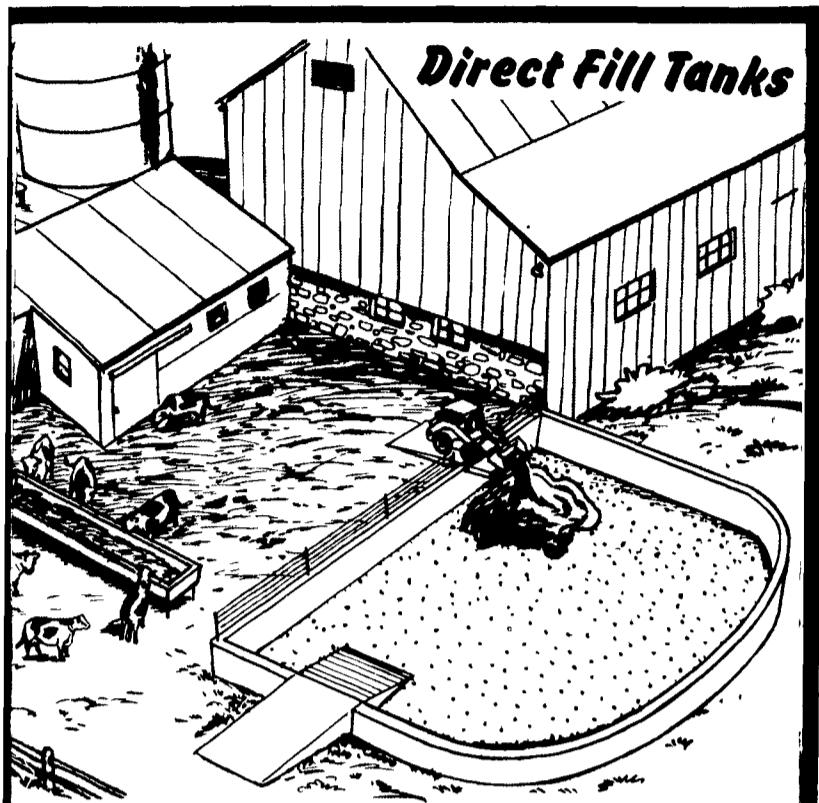
“On May 29, 1884, the U.S. Congress created the Bureau of Animal Industry within USDA,” Block said. “The bureau’s job was to protect export markets from the flooding U.S.

livestock industry, to keep out foreign animal diseases and to work with farmers and ranchers to combat serious animal diseases.”

Block said the centennial will be observed throughout 1984. A USDA ceremony will mark the anniversary on May 29. The department has designed a special logo and prepared a visual presentation for observances. The 1984 yearbook of agriculture will be devoted to livestock and pet health.

“Today in America we have the healthiest livestock and the most abundant food supply in the world,” Block said.

In 1953, the bureau was split into several separate groups. Research and regulatory functions are now carried out by USDA’s Agricultural Research Service and the Animal and Plant Health Inspection Service. Meat and poultry inspection is done by the Food Safety and Inspection Service. The Packers and Stockyards Administration regulates livestock marketing.



SIZES & LAYOUTS TO YOUR SPECIFICATIONS

We are qualified to handle any poured concrete job you may need. We use a practical aluminum forming system to create concrete structures of maximum strength and durability. For a highly satisfactory job at an affordable price, get in touch with us.

POURED FOR DURABILITY

Groffdale POURED walls

BRICK CHURCH RD. LEOLA, PA. 17540

FOR SALES & LAYOUT CONTACT
GROFFDALE POURED WALLS (717) 656-2016
JAKE KING (717) 656-7566

SMUCKER'S SALES & SERVICE, INC.

RD #2, BOX 21
NEW HOLLAND, PA 17557



12-36 bhp

**TS2 / TS3
AIR
COOLED
DIESELS**

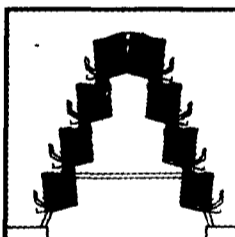


FOR PROMPT SERVICE CALL

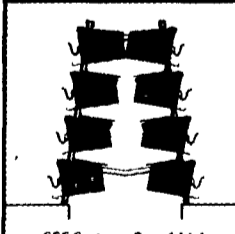
717-354-4158 OR IF NO ANSWER

CALL 717-354-4374

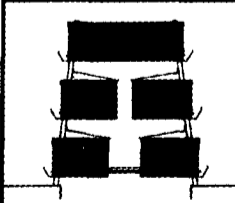
Fast track to egg cost reduction



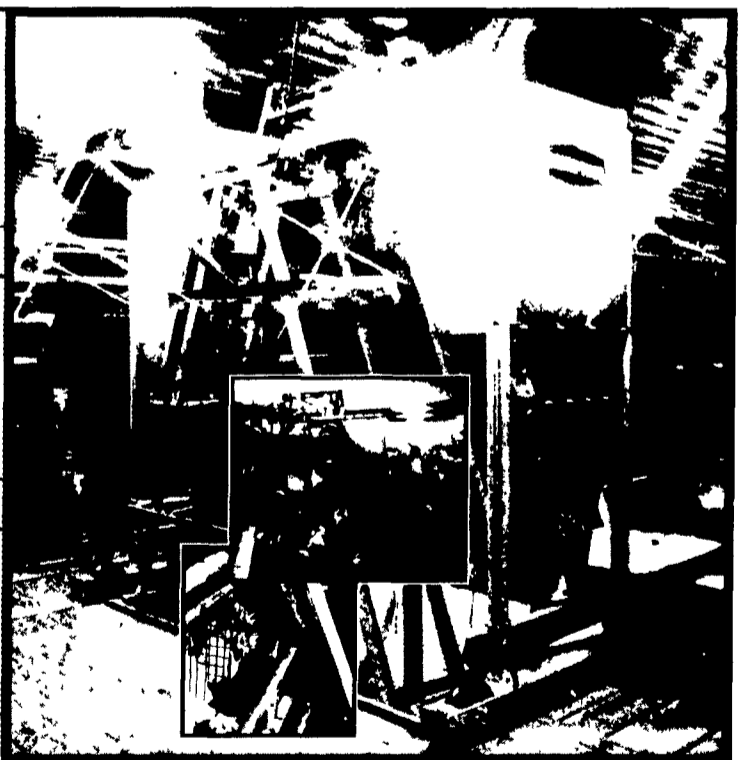
Shallow PYRAMID₂ - 3 or 4-high



SSS System - 3 or 4 high



Brood Grow - 3 or 4-high



Chore Time's MEALMASTER FeedKar traveling feeder can help you get your egg costs on track. Here's how:

- 1 The typical chain feeder uses 1 1/2 hp to feed each cage tier — 6 hp for a 4 high. Our hopper system traveling on tracks is pulled by a cable using only 1/2 hp — a 95% energy reduction!
- 2 Cuts feeder maintenance and labor costs to virtually "zero." You know what a chain feeder costs to maintain!
- 3 Evens out egg production from

one end of the row to the other — birds at the front can't "highgrade" the feed.

We'd like to talk to you about the other ways the nearly 200 feeders we've sold are helping owners. Our FeedKar is now standard on all Chore Time brood grow and layer cages, our famous shallow PYRAMID and new deep PYRAMID, our 3 and 4 high SSS.

Find out more about the FeedKar — plus our line of cage systems and the Chore Time "total package" of feed bins, auger ventilation and waterers.

IMPROVE FEED PALATABILITY AND PROFITABILITY BY USING LIQUID AND DRY MOLASSES PRODUCTS IN YOUR FEED FORMULATION FOR ANIMALS FROM ZOOK MOLASSES CO.

- Liquid Feeding Cane Molasses
- Honey Brook Brand Dried Molasses - 50 lb. Bag
- Z Brand Dried Molasses - 50 lb. Bag
- Honey Brook Energiblock - All Natural 20 - No. Urea
- Energiblock - Hi Protein 36
- Energi Cubes for Horses

ZOOK MOLASSES CO.

WEST MAIN ST., BOX 160, HONEY BROOK, PA. 19344
Phone 215-273-3776 or 717-393-3987
Call toll free in area code 215 & 717: 800-662-7464

GOLDEN BARREL PRODUCTS

- ★ BAKING MOLASSES
- ★ PANCAKE SYRUP
- ★ CORN SYRUP
- ★ WORCHESTERSHIRE SAUCE

- ★ BARBADOS MOLASSES
- ★ HONEY
- ★ SORGHUM SYRUP

Household Molasses and Syrup

- ★ BLACKSTRAP MOLASSES
- ★ TABLE SYRUP
- ★ SHOO-FLY PIE MIX

If your local store does not have it, contact:

GOOD FOOD INC.

WEST MAIN ST., BOX 160, HONEY BROOK, PA. 19344
Phone 215-273-3776 or 717-393-3987
Call toll free in area code 215 & 717: 800-662-7464

Northeast
agri
systems

NORTHEAST AGRI SYSTEMS, INC.

P.O. Box 187
Fitchville, CT 06334
Phone: (203) 642-7529

Local Representative
DAVID NEWMAN
(717) 299-9905

CHORE-TIME