

GRAIN EQUIPMENT

GRAIN EQUIPMENT

GRAIN EQUIPMENT

GRAIN EQUIPMENT

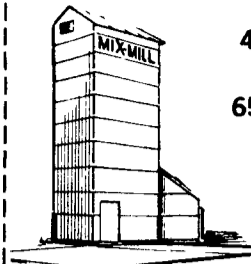
**GRAIN DRYING & STORAGE**

Prompt Unloading  
We Buy And Sell

Combining and Hauling

**ERWIN J. MILLER & SON**  
**(717) 656-8593**

Loc: 1/2 Mile North of Bird-In-Hand  
on Beechdale Rd.



New Four  
Compartment  
40 ton feed factory  
\*8,900  
65 ft. 8 in. transport  
auger, \*1,499

**HERSHEY FARMS**  
R.D. 1 Box 139  
Marietta, PA 17547  
**717-653-8783**

DAIRY EQUIPMENT

DAIRY EQUIPMENT

DAIRY EQUIPMENT

Save Money 48x72 rubber  
mat, \$29.95, 301-885-  
5045.

One Delaval milker bucket  
and lid with one extra lid,  
717-725-3414.

For Sale - 600 gallon  
Mueller OH with 3 HP B  
free heater and auto.  
washer. Franklin Co., Best  
offer, 717-375-4678

Delaval glass pipeline  
milking system for 64 cow  
barn with 6 units. Phone  
evenings, 201-689-3957.

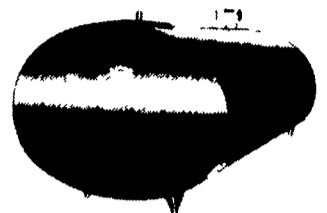
**SMUCKER'S SALES & SERVICE, INC.**

RD #2, BOX 21  
NEW HOLLAND, PA 17557

NOW AUTHORIZED DEALER FOR



Introducing  
**MODEL  
SED**



Featuring  
Sunset's pre-formed heavy-  
gauge stainless steel  
evaporator plate is the  
heaviest in the industry

MILK  
COOLING  
SURFACE  
REFRIGERANT  
PASSAGE

**USED TANKS AVAILABLE**

FOR PROMPT SERVICE CALL  
**717-354-4158 OR IF NO ANSWER  
CALL 717-354-4374**

DAIRY EQUIPMENT

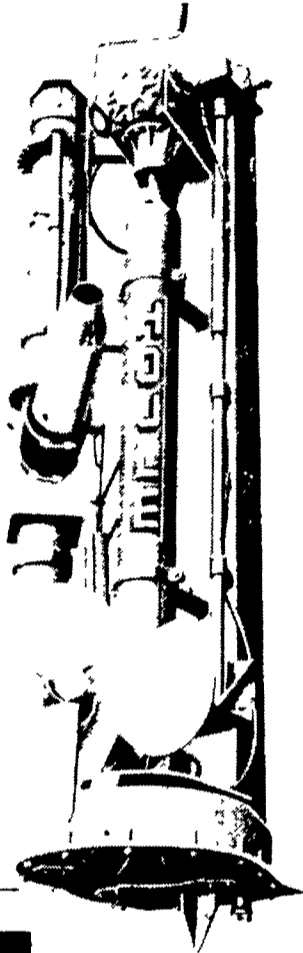
DAIRY EQUIPMENT

DAIRY EQUIPMENT

**The MANURE PUMP  
with a  
BIG BITE**

If you are trying to agitate and  
pump manure without this big  
propellor and positive cutting  
blade, you probably aren't doing  
it as fast as you could.

This big 24" steerable pro-  
peller agitates even the  
hardest of manure storage  
pits with heavy bedding at  
displacement rates of 18,000  
gallons per minute. The cut-  
ting blade will chop long  
straw bedding and hay from  
feed bunks to mix it into a  
rich and creamy fertilizer.  
This pump is available for all  
sizes of storage areas in  
lagoon, trailer, 3-point hitch,  
and stationary models.



**Don't be caught short of  
enough pump to do the job.**

Call us today for more informa-  
tion or a free demonstration.

**US AGRI-  
SYSTEMS**

3053 Barren Rd.  
Oxford, PA 19363  
**(301) 398-2948**

Competitive Used Equipment Available  
**DEALER INQUIRIES INVITED**

**wig  
HOUSE**

- Bedding Choppers
- Silage Carts
- Manure Tanks
- Liquid Manure Pumps
- ELECTROMIX
- Barn Cleaner Chains

**US AGRI-  
SYSTEMS**  
(301) 398-2948

- Free Stalls
- Self-Locking  
Panels
- Comfort  
Stalls
- Gutter Grates
- Cow Mats

**DARI-KOOL**  
COOLING SYSTEM

**BOU-MATIC**  
MILKING SYSTEM

- Double 7 Automated Milking Parlor
- 14 Universal Weigh Jars
- (1) Surge 3" around the barn pipeline
- (1) Used Zero Pipeline, complete
- (1) Used Bou-Matic Carousel with 8 units,  
weigh jars, low line, designed for  
60 cows and up

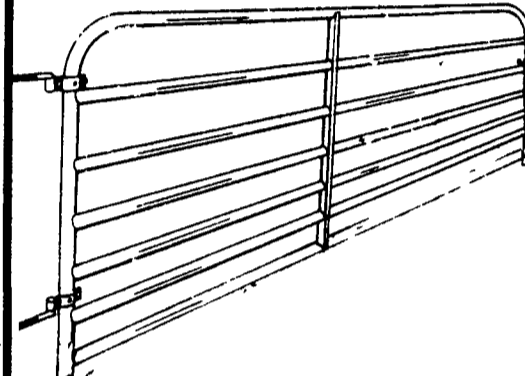
**USED TANKS**

- 300 Gal Esco
- 450 Gal Dari-Kool  
(round)
- 600 Gal Mojonner
- 600 Gal Jamesway
- 800 Gal DeLaval
- 800 Gal Zero
- 1000 Gal Dari-Kool
- 1000 Zero
- 1000 Milkeeper
- 1200 Zero
- 1250 Dari-Kool
- 1250 Surge
- 1250 DeLaval
- 1500 Dari-Kool
- 2500 Mueller

INSTALLATION — PLANNING  
LAYOUT — SALES

**SHENK'S FARM SERVICE**  
501 E. Woods Drive, Box 225  
Lititz, PA 17543  
Phone 1-717-626-1151

**TUBULAR STEEL GATES**



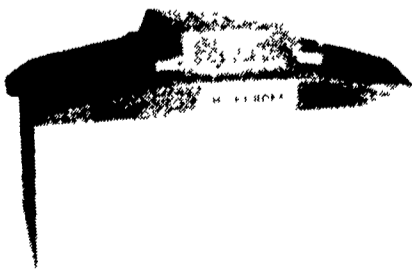
Seven 1-5/8" I.D. horizontal tubes  
spaced closer at the bottom for a pig tight  
gate. 50" high with adjustable clamp  
style hinges. All hardware needed for a  
complete installation is included. Painted  
finish.

4' Length	<b>\$36.95</b>	12' Length	<b>\$45.95</b>
6' Length	<b>39.95</b>	14' Length	<b>52.75</b>
8' Length	<b>41.45</b>	16' Length	<b>55.50</b>
10' Length	<b>43.95</b>		

**ZIMMERMAN'S ANIMAL  
HEALTH SUPPLY**

RD 4, Box 141, Lititz, PA 17543  
Located 3 miles west of Ephrata, 1/4 mile South of  
Rt. 322 along Wood Corner Road  
**(717) 738-4241**

**Energy Free Drinkers  
For Cattle or Hogs**

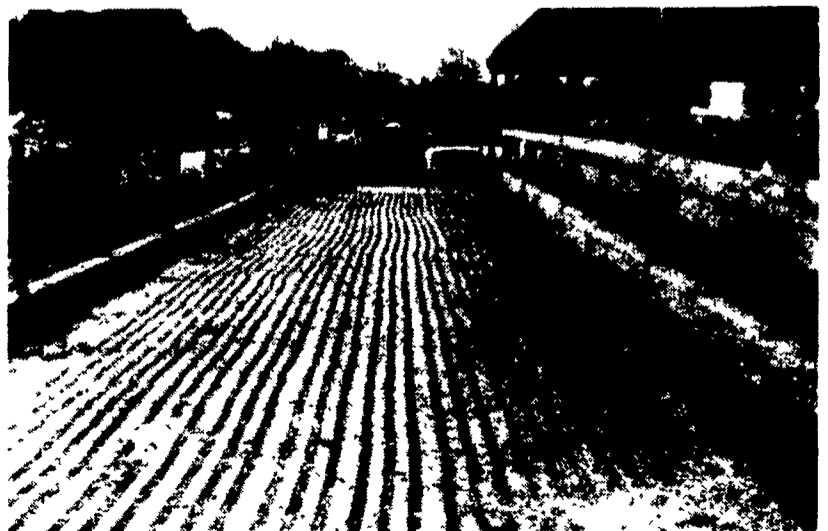


- Sturdy Construction
- Two openings to handle 2 pens
- Proven trouble free in  
Minnesota winters for 17 years
- Requires no costly electric or  
gas to prevent freezing

**Knutsen Bros.**  
130 Knutseh Lane  
Rising Sun, MD 21911  
**301-658-6325**

**IS SLICK CONCRETE A  
PROBLEM ON YOUR FARM?**

Now you can rent our re-surfacing  
equipment to return your concrete to safe  
and comfortable conditions for your cattle.  
The equipment produces a 2 1/4 inch wide  
band approx. 2 1/4 inch apart. This  
preserves enough smooth surface for easy  
scraping and enough rough surface to give  
surefootedness for your animals. Greatly  
aids in heat detection. We offer "at your  
door service" in a 10 state area. Prices  
are reasonable. Please call us collect for  
more details anytime except Sunday. Call  
(301) 790 1303 collect.



SILAS MARTIN MGR.

**Suburban Rentals Inc.**  
Hagerstown, Maryland