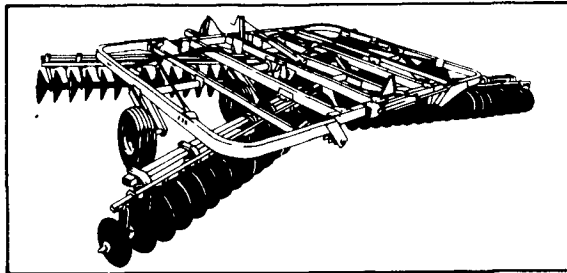


## JOHN DEERE DISK DRAFT TESTS PROVE

# WE DON'T HAVE THE PULL YOU THINK WE DO

The chart below shows the results of disk draft tests John Deere engineers ran in Illinois, Tennessee and Kansas against our major full-line competitor. In the Kansas test we also took on two of the major short-line disks. These tests help dispel the rumor that our disks pull harder. Sophisticated computer equipment accurately measured the results of side-by-side runs. The drawbar pull required by our disk at maximum gang angle was less than, or equal to, that of the competition. At no time did we pull harder. When we went to minimum gang angle (the competition's fixed gang angle couldn't match this ideal adjustment for less-aggressive seed-bed tillage work), we required far less pull. Stop by and let us give you all the details on these draft tests. And we can point out all the features that make John Deere Level-Action disks your best buy.



100	150	200	250	300	350
JD 235 MAX. ANGLE					
COMPETITOR A					
JD 235 MIN. ANGLE					

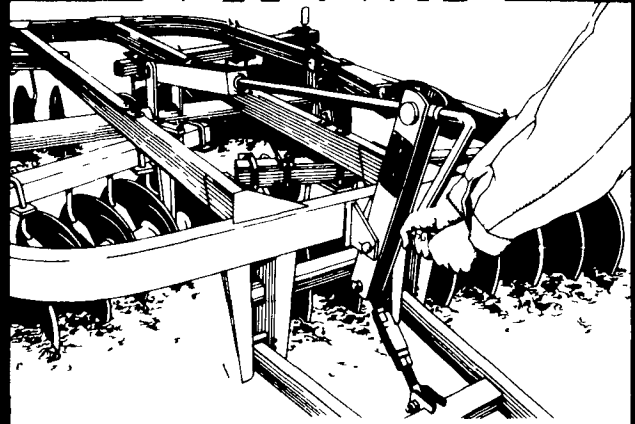
100	150	200	250	300	350
JD 235 MAX. ANGLE					
COMPETITOR A					
JD 235 MIN. ANGLE					

100	150	200	250	300	350
JD 235 MAX. ANGLE					
COMPETITOR A					
COMPETITOR B					
COMPETITOR C					
JD 235 MIN. ANGLE					

TODAY'S JOHN DEERE LEVEL-ACTION™ DISKS—1ST IN QUALITY



## SIMPLE LEVELING



Level diskings  
is quick and easy . . .  
turning one crank  
is all it takes

Leave your wrenches in the tractor:  
drawn Level-Action™ disks have a  
simple crank adjustment.

Eliminate a center ridge or valley  
by rotating this crank. It's the only  
adjustment needed in most fields.

These disks also put virtually 100  
percent of their working weight on  
the blades, thanks to the Level-  
Action hitch linkage. See us for de-  
tails on John Deere disks in widths  
and weights that match your needs.

**A.B.C. GROFF, INC.**  
New Holland, PA  
717-354-4191

**ADAMSTOWN  
EQUIPMENT INC.**  
Mohnton R.D. 2, PA  
(near Adamstown)  
215-484-4391

**CLUGSTON  
IMPLEMENT, INC.**  
Chambersburg, PA  
717-263-4103

**COVERT & SONS, INC.**  
Neshanic Station, NJ  
201-369-5241

**OXFORD GREENLINE**  
Oxford, PA  
215-932-2753 -  
215-932-2754

**EVERGREEN TRACTOR  
CO., INC.**  
Lebanon, PA  
717-272-4641

**FOSTER EQUIPMENT  
SALES**  
Elmer, NJ  
609-769-1535

**H.R. GUTSHALL  
& SONS, INC.**  
Carlisle, PA  
717-249-2313

**ROBERT G. HAMPTON,  
INC.**  
Shiloh, NJ  
609-451-9520

**I.G. SALES**  
Silverdale, PA  
215-257-5136

**TAM SERVICES INC.**  
RD 4 Box 77A  
Gettysburg, PA  
717-334-9148  
717-334-3710

**KERMIT K. KISTLER INC.**  
Lynnport, PA  
215-298-2011

**LANDIS BROS. INC.**  
Lancaster, PA  
717-291-1046

**ROBERT E. LITTLE INC.**  
Zieglerville, PA  
215-287-9643

**PIKEVILLE EQUIPMENT  
INC.**  
Oyster Dale Road  
Oley RD2, PA  
215-987-6277

**GEORGE V. SEIPLE & SON**  
Easton, PA  
215-258-7146

**TOBIAS EQUIPMENT  
CO., INC.**  
Halifax, PA  
717-362-3132

**LOST CREEK IMPLEMENT**  
Oakland Mills, PA 17076  
717-463-2161

**WOODHULL EQUIPMENT,  
INC.**  
Medford, NJ  
609-654-2011

**M.S. YEARSLEY & SONS**  
West Chester, PA  
215-696-2990

**SMITH'S  
IMPLEMENTS, INC.**  
Mercersburg, PA  
717-328-2244

**NEUHAUS'ES**  
York, PA  
717-428-1953

**EVERGREEN ENGINES CO.**  
32 Evergreen Road  
Lebanon, PA 17042  
717-273-2662

**ELDER SALES  
& SERVICE, INC.**  
Stoneboro, PA  
412-376-3390  
412-376-3740

**BARRETT EQUIPMENT**  
Smicksburg, PA  
814-257-8881

**SOLLENBERGER  
EQUIPMENT**  
Everett, PA  
814-652-5223

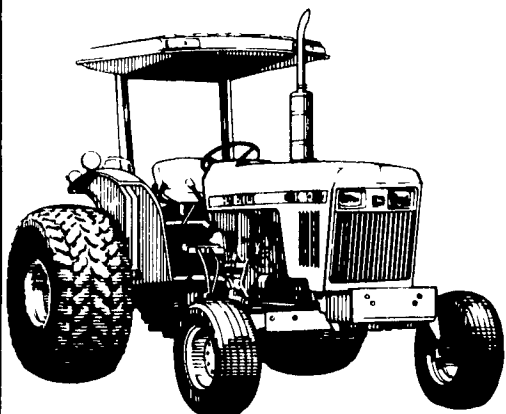
**LEHIGH AG  
EQUIPMENT**  
Wescosville, PA  
215-398-2553

## The Long Green Line™



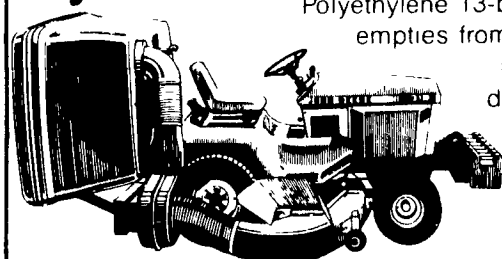
*Nothing runs  
like a Deere™*

## 50- and 60-hp Tractors



Two brand-new fuel-efficient tractors designed to handle demanding jobs. Both have a 4-cylinder liquid-cooled diesel engine — 55 gross hp/50 PTO hp on the 1450, 67 gross hp/60 PTO hp on the 1650. Plus 3-range collar-shift transmission with 9 forward, 2 reverse speeds, inboard planetary final drives, independent "live" 540-rpm rear PTO, open-center hydraulics, Category 2 3-point hitch, power steering, hydraulic wet-disk brakes, Roll-Gard® ROPS and much more. Both are available with front-wheel drive.

## New Material Collection Systems



Two units — Hydraulic Dump and Tilt Dump — attach directly to tractor for better maneuverability. Polyethylene 13-bushel hopper empties from driver's seat. 5-speed PTO-driven fan. Can be used with 316, 318, 420 and 430 Tractors.