

Computer network

(Continued from Page A24)

support is a unique aspect of Extension. It is the volunteers who sit on County Executive Boards that are the real strength of Extension's volunteer support.

"The numbers tell a great deal," he said. In 1983, more than 20,000 Pennsylvania volunteers conducted 50,000 meetings. Three-quarters of a million people attended these meetings.

This is in addition to the meetings conducted by Pennsylvania Extension staff that were

attended by almost 1.4 million people.

Chester Heim, Deputy Secretary, Pennsylvania Department of Agriculture, representing Governor Thornburgh and Penrose Hallowell, Pennsylvania Secretary of Agriculture welcomed the legislators. He presented a letter from Governor Thornburgh to PCCEA president Mary Grim. The letter said that Pennsylvania agriculture is growing and the Extension service is a critical element to the continued success of

Pennsylvania agriculture.

Mrs. Grim reminded the legislators that the delegates were volunteers. Despite the adverse weather conditions, a record number of 200 delegates and 105 state senators and representatives attended the banquet.

The legislators and delegates saw a five-minute film featuring Carlton Groff, a Lancaster County farmer. Groff explained how Extension has helped his farm business. He relies heavily on Penn State publications and Extension specialists to make agricultural and business decisions.

Betsy Ogborn, 4-H public



Participating in the Pa. Council of Cooperative Extension Association's annual legislative banquet are, seated from left, Sen. Noah Wenger and Rep. Kenneth Brandt; standing from left, Kenneth Meck, president of the Lancaster Extension Association board of directors, Carlton Groff, director, and wife Carol, Rep. Terry Sheetz, Lilli Ann Kopp, director, and Rep. Jere Schuler.

Extension honors Wargo



Rep. Joseph Wargo, of Olyphant, was honored in Harrisburg by the Lackawanna County Cooperative Extension Association with a certificate of recognition on the occasion of his retirement for his support of Extension.

Shown at the presentation are, first row, Audrey Naylor, Factoryville, county Association president; and Rep. Wargo. Second row, left to right, Wilfred Richards, Dalton, treasurer; Ann Powell, Carbondale, vice-president; and Edward Sokoloski, Justus, executive committee member.

speaking contest winner from Somerset County, spoke on how Extension has helped her. She said that through 4-H she has had the opportunity to meet many people, travel and make friends all over

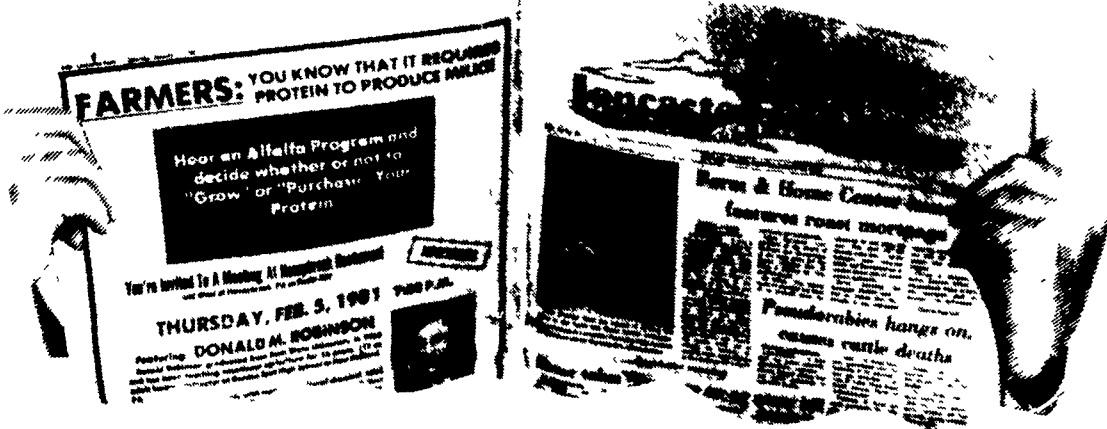
the country, and broaden her understanding of the world.

Lancaster County Extension Director, Jay W. Irvin, explained how Extension reacts in an emergency, such as the avian influenza epidemic.

Here's What You Get For Less Than 15¢ A Week!



Market Reports!



- ★ **LATEST INFORMATION** from livestock markets and auctions of the East and Mid-West, including futures.
- ★ **OUR MARKET REPORTS** are received by phone up to 10 AM on Friday morning...just 2 hours before press time!

Our total farm coverage also gives you NEWS (including Dairy & DHIA Reports)... FEATURES...BEST BUYS ON PRODUCTS & EQUIPMENT...FREE MAILBOX MARKET...and much, much more!

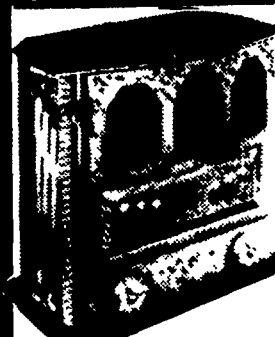
At LANCASTER FARMING, we think we do a good job of keeping you informed... and we have over 40,000 paid subscribers who think so too!



P.O. Box 366, Lititz, PA 17543
Phone 717-626-1164 or 394-3047

DUSSINGER'S QUALITY STOVES

"Expert Guidance, Installation & Service"



Crane Stoves.

WOOD and COAL
Nobody in this whole country makes a better coal stove than Crane!

We feature many models of stoves and inserts.

2533 Old Phila. Pk., Rt. 340, Smoketown

T, T&F 10-8, W&S 10-5, Mon. by appt.

(717) 397-7539

SANDBLASTING REPOINTING WATERPROOFING

From repairing drafty, leaking walls to complete stucco removal and repointing, exterior restoration or farmhouses is our specialty!

REASONABLE RATES JAMES H. DOSTER

507 South Spruce Street
Lititz, Pennsylvania 17543

For information or a free estimate, return coupon below.

Name _____

Address _____

City _____ State _____ Zip _____

Phone: Area _____

Directions to your home: _____