

# APPRECIATION DAYS THRU SATURDAY, MARCH 17

Wednesday thru Friday:

7:30 A.M. to 4:30 P.M.

Saturday:

7:30 A.M. to 11:30 A.M.

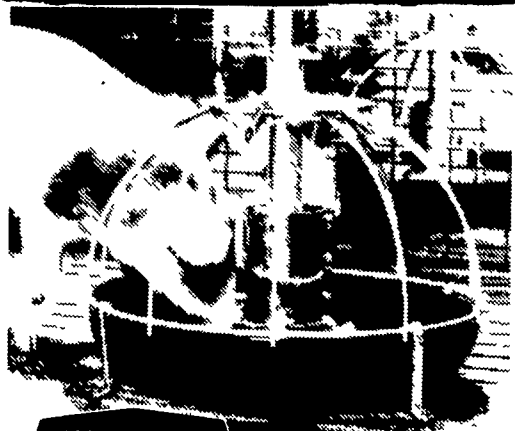
## CHORE-TIME COW FEEDING SYSTEM



Chore-Time's Cow Feeding System is the modern answer to an old problem. The system is ideal for feeding individual cows in either a stallion barn or a milking parlor — mechanically. Individual portion control feeders are used with a flexible auger that supplies feed to the feeders. Feeders can be placed along the auger tube where needed. This means you can design a feeding system to fit your particular needs.

## MEAL-TIME

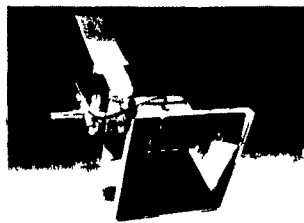
The programmed feeding system that cuts your No. 1 production cost



CHORE-TIME

Now there's a way you can boost profits 20% or more. Chore-Time's unique new MEAL-TIME Feeding System feeds your hogs "meals", improving feed conversion 5% or more. See us today and find out how you can profit from this brand new idea.

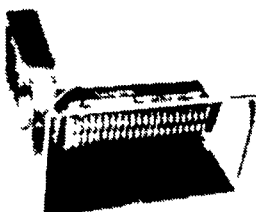
## SBMD INFRARED HEATING, INC.



SUNNY PIG 1  
1,000 to 2,200 BTU



SUNNY PIG 2  
2,200 to 4,400 BTU



SUNNY PIG 3  
2,500 to 5,000 BTU

## INFRA-RED GAS BROODERS

FOR HOGS & POULTRY

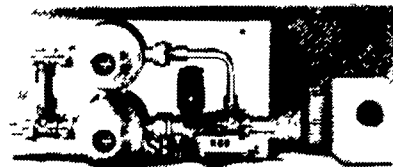
5 Models To Choose From  
For Your Particular Operation!

\* AUTOMATIC CONTROL  
SYSTEM AVAILABLE

Choose downgoing heat...  
Choose SBM brooders.



GROUP CONTROL



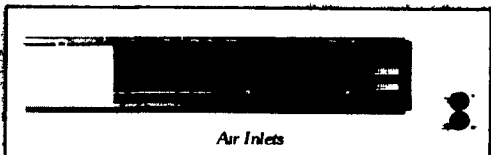
RGG + ST1  
SEMI-AUTOMATIC CONTROL  
w/Thermostat



Model 7500 Fan Control

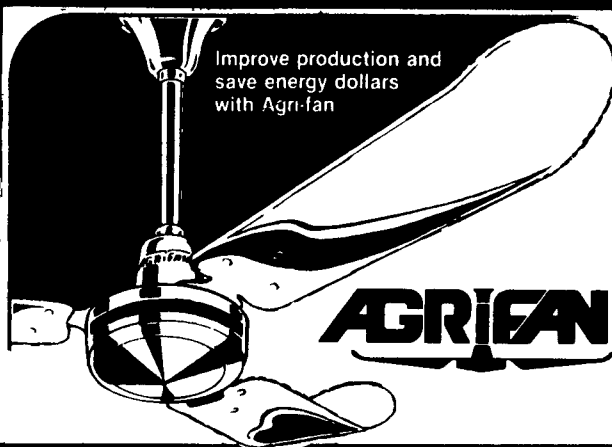


Static Monitor



Air Inlets

Chore-Time's Advanced Air Systems offer you a fully automatic static pressure system for controlled environment houses. A complete Chore-Time system includes fans, automatic fan controls, self-adjusting air inlets, and inlet control mechanism.



Improve production and  
save energy dollars  
with Agri-fan

Built for Agri business new exclusive Agri fan promises increased production a healthier more comfortable environment year round and fast payback

By continually circulating 24 000 cu ft of air per minute Agri fan equalizes room temperature and humidity Floors stay drier Winter fuel costs are reduced up to 30% and in summer uncomfortable stagnant air is prevented Agri fan is economical to operate — max 1 amp draw — and pays for itself in 1 to 2 years

Agri fan carries a five year warranty and features UL and CSA listing — heavy duty construction totally enclosed motor — aerodynamically designed blades — solid state infinite speed controls — no maintenance easy installation

AGRI-FAN

OUR PRICE... \$119<sup>00</sup>

## 15% CASH DISCOUNT

ON ALL PARTS INCLUDING...



Shenandoah



Livestock Systems



Full Line Of Parts In Stock!



## Medicator MEDICANT PROPORTIONER

For the introduction of medicants into the drinking water of poultry, swine and other farm animals.

Now Medicator shows you just how much water your pigs and chicks are consuming per minute... a simple valve adjustment on the medicant flow meter will proportion the proper amount of MEDICANT...

• 2 GALLON SPECIAL PRICE... \$155<sup>00</sup>

• 4 GALLON SPECIAL PRICE... \$210<sup>00</sup>



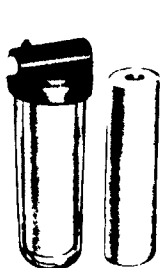
## MONOFLO NIPPLE WATERER

Precision made from stainless steel, will not rust or corrode Factory tested indefinite life "Bite-Action" eliminates water waste Pigs accept drinkers quickly One nipple drinker services 12 pigs to market size Ready to install

For water pressure from 15 to 50 p.s.i. Wt. ea. 3 1/2 ozs.

SPECIAL PRICES

3/8" 1/2"  
\$3.00 ea. \$3.75 ea.



COLD WATER FILTERS  
For Filtering Livestock And Household  
Watering Systems

\$27<sup>00</sup> ea.

FILTER REPLACEMENT CARTRIDGE

2 Per Box \$7.50

SEE US FOR PVC & GALVANIZED PIPE & FITTINGS

## AGRI-STYLE HOG CONFINEMENT EQUIPMENT

HOT-DIPPED GALVANIZED or PAINTED

The most modern and efficient designed equipment at lower prices than the competitive brands.

SPECIALS ON HOG EQUIPMENT IN STOCK:

- Stainless Steel & Galv. Hog Feeders
- 4'x4' Galv. Nursery Decks
- 30" High Galv. Panels Limited Supply

4'x8' and 5'x7'  
WOVEN WIRE  
FLOORING

SALES, INSTALLATION,  
POULTRY AND GRAIN

TIME DISTRIBUTOR

EQUIPMENT, INC.

LEOLA, PA 17540

66-4151