

MAILBOX MARKET

Wanted Farrowing crates 717 225-5047 or write James Stelfox R3 Spring Grove PA 17362, York Co

For Sale Get your breeding stock now, Wild Turkeys & Bob White Quail Carbon Co Leighton 717 386 4978

For Sale Barn large early 1800 stone & wood bank barn many heavy timbers & wide planking Reading Pa 215 375 0714

For Sale Int 76 combine 7' cut pto hyd header w/bin exc cond Perry Co 717 536 3263

For Sale 1 row pto driven potato digger \$375 6000 gal steel tank \$600 Perry Co 717 957 4907 after 7 p m

For Sale 100 6 shade trees maples willows sycamore, locust poplar Kentucky coffee Paulownia hackberry etc \$5 00 \$15 00, 717 394 3607

For Sale Yorkshir service age boar \$150 Lanc Co Isaac S Nolt, R#1 N Shirk Rd, New Holland PA 17557

For Sale Oliver HG crawler parts & Echo mist sprayer, like new new & used chain saws Lanc Co 717 859 2797

For Sale 2 clear level lots at Lake Wynonah in Schuylkill Co make offer Berks Co 215 678 3602 after 4 p m

For Sale 686 Farmall 500 hrs German 310 loaded 706G loaded 291 motor Farmall A w/cult Union Co 717 966 0650

TRUCKS & TRAILERS

For Sale '76 Chevy C-65, 26,000 GVW, new 427 engine & clutch ass'y., 30,000 mi., new Dec. '83, all brake lining, front king pins & front wheel bearings, good radial tires, Columbia Co, 717-799-5213.

TRAILERS FOR SALE - 7 flat trailers, 40 to 45 ft long, 38 and 40 ft. Brown potato vans, 40 ft Gindy open top, 45 ft Wilson straight cattle van, used propane cargo heaters Keens, 717-626-5420.

Ford 500 1972 12 ft stake body, steel bed, hydraulic lift gate, \$3,800, 717-838-1533 or 717-838-9657.

For Sale - 1974 LN700 5+2, 10x20 spoke 18 ft Omaha flat dump, \$6500, 1973 Ford C7000 175 Cat., 5+2, \$3500, 304-735-3352.

1963 Chevy flat bed dump, needs rear end Make offer, 717-582-2352.

New 16' heavy duty truck bed with 40" grain sides, 717-687-6940 or 717-687-9006.

'74 GMC 33,000 GVW 16' body with feed blower and hoist, will sell separate, 717-687-6940 or 717-687-9006.

For Sale - 1977 Ford pickup 150 with 70,000 miles, 717-299-4592

1972 GMC with 18 ft dump bed, removal sides, two way tail gate, grain shoot, rack over truck, truck needs new rear \$2,500 or best offer. Ask for Ivan, 717-768-3052.

International C.O.E. rebuilt 6 cylinder, Cummings Diesel, 5+2 transmission, takes 22'-24' body No rust, excellent condition, 609-859-2381.

For Sale - Ford F-350 PS, PB, new 12' Kentucky body, sell together or separate, Blair Co., 814-695-6177.

1964 Int. with 500 gallon tanks and 40 ft hydraulic spray boom, 717-933-4360.

1968 Int. spray truck with two 500 gallon tanks with 3 year old diesel engine, 717-933-4360

Wanted - 17 ft or 18' aluminum or steel grain body with or without hoist, Chester County, 215-932-8382

For Sale: 35 ft Flatbed Trailmobile trailer with grain sides and tarp, 609-261-5536.

OFFICE TRAILERS - for rent, delivered & economical, 301-771-4529.

Storage trailers wanted Call 301-771-4529.

For Sale - 1971 30' dump trailer, 32' frame, 6'6" steel sides with barn doors Price, \$7,250, Joleo Farm, 301-928-3655

1977 Int 1850, 466 Diesel, 5+2 speed power steering, 9 00x20 rubber, new radials, front with 18' box 10,500 w/o box 9,500 Must see to appreciate Carroll County, 301-876-1235

'65 White tractor, 220 motor dsl., single axle, sleeper, 36' trailer, elevator, tandem axle, open top with cover, good condition, 717-684-5895 after 6 PM.

Studebaker 10 ton truck with working dump, \$750, 1975 Chev. 3/4 ton utility truck, 350 4 speed, accident damage, \$1500 or best offer, 215-598-7687, 7 AM to 8 PM

1 WW Stock Trailer - 16 ft, \$1000, 717-862-3367

'82 Ford F150 Ranger XLT Lariat 4x4 Super Cab pickup, 351 auto., PB, PS, air, power windows, door locks, cruise, tilt wheel, trailering package, dual tanks, 25,000 miles, 717-733-2873.

For Sale - 1956 White tandem axle dump truck, blown motor, \$600, 814-766-2733

TRUCKS & TRAILERS

NEED CASH? We buy unwanted trucks and parts, scrap aluminum of any kind. Wrecked dumps, vans, flats, tank trailers, etc. Call 717-273-7474 (day), 215-944-9871 (evenings)

'68 IH grain truck, 16' body, new hoist and tires, \$3,500, 201-439-2267.

1965 Ford 1000 Dump, 700 Bushel Grain Body, Rebuilt engine, new tires, 56,000 GVW, \$7,000 Call 717-428-1665.

RTOF 9513 transmission, Hendrickson suspension, 34,000 Rockwell rears, 4.11 ratio; Parts for 270 Cummings, 717-425-3697.

1978 Int. 800 18 ft. grain and cattle body, 717-359-4689.

TRUCKS & TRAILERS

Custom built truck beds, large or small, built to your specifications for your needs, 717-424-0819

1974 GMC Astro., Detroit Diesel, air tag axle, sliding 5th wheel, new rubber, new clutch, 13 speed, good condition,

Phone **215-767-1408** evenings

- 1974 D100 Pick-up, 318, Good Shape.
- 1982 SPECIAL PRICE! TC3, 2 Door, Fast Back, 22,000 Miles, A Real Gas Saver.
- 1978 Chevy Pick-up, no rust.
- 1979 Subaru Wagon, 4WD, 56,000 miles.
- 1978 D150, SPRING SPECIAL 6100 G.V.W., Regular Gas, 400 C-I, A Good Tow Vehicle, One Owner.
- 1981 B-350, 3 Ton Payload Van.

PETTICOFFER DODGE, INC.

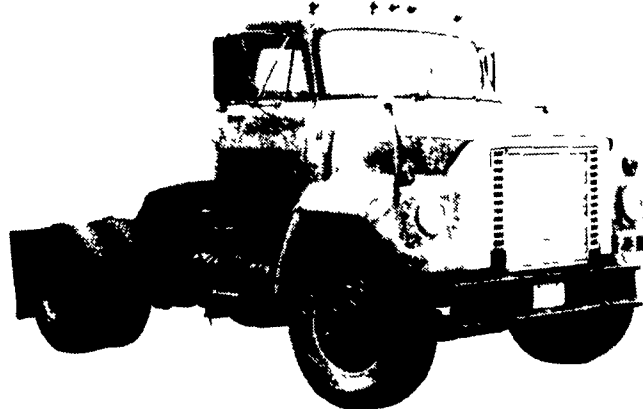
Route 230 East Next to Shopping Center
Elizabethtown, PA
PHONE 717-367-1808

TRUCKS & TRAILERS

TRUCKS & TRAILERS

TRUCKS & TRAILERS

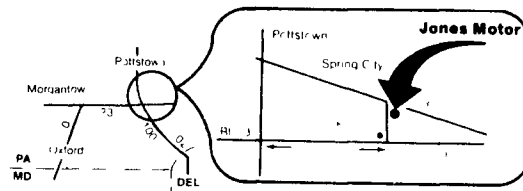
CHEAP TRUCK RUNS GOOD!



We have 9 1976 International Harvester tractors like the one shown here, each in good running condition, for just \$1,975. We will also discuss your best reasonable offer. Please call

Jones Motor
at 215-948-7900

Ask for Dave Skipper or Rhonda Bertolet



TRUCKS & TRAILERS

'83 Ford F350 w/16 ft. aluminum roll back truck, 10,000 GVW, 12,000 miles, like new, 717-733-2873

'83 Ford F250 Pick-up, 300 - 6 cylinder, 4 speed, PS, PB, 8600 GVW, 10,000 miles, \$7950; '81 Ford F250 Super Cab Pick-up, 351 auto., PB, PS, air, \$5900, '82 Chevy C20, 3/4 ton Pick-up, 305-4 speed, PS, PB, \$5700, 717-733-2873.

Chevy C60 grain truck, hydraulic lift, 2 speed rear end, \$2800 Also, 1976 GMC Pick-up, \$2800, 717-677-7387.

1972 Chevy C-304 sp., V-8, custom built body diamond plate w/beaver-tail, fold-down ramp hauling farm tractors, equipment, \$3000, orbco, 609-629-6596.

Freight Van Trailers Wanted for storage, 301-771-4529

For Sale - a nice 1974 1910 Int. 10 wheeler truck, 20 ft grain body is new, all new tires, 1,000x20, all in perfect condition. Call after 6 PM, 301-429-2962.

R model Mack 237 Maxi 5 speed, tandem rears, wetline, \$7,500, 215-255-5211

'72 Dodge D300 10,000 GVW, 10' wooded cattle body, new paint, very good condition, 215-965-6363, Lehigh Co.

1977 Int 1750 DT 466 Diesel, 5+2 speed, will take 16' or 18' body; 1978 LN 700 Ford, airbrakes, power steering, 5+2 speed, 10:00x20 tires, 27,500 GVW, 18' midwest steel flatbed. Truck has a new Ford rebuilt 391 V8 engine with warranty; 1977 int. 446 gas, 1,800 5+2 speed, power steering, 10:00x20 rubber, 1978 Int. 1,800 446 gas, 5+2 speed, power steering, 10:00x20 rubber New bodies and hoist can be furnished for any of these trucks, 301-877-9889

1966 Chevy Kerb Van, aluminum body, rebuilt 6 cyl, good tires, excellent condition, 301-452-8574

For Sale - 1977 Ford 250, 3/4 ton pick-up, V8, A.T., 62,000 miles, \$1,975, 717-865-3488



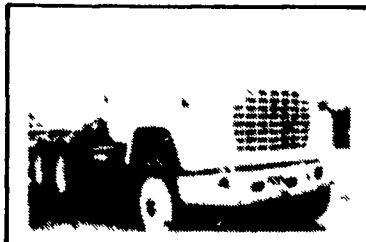
YORK, PA
1116 Roosevelt Ave. (717)848-6400

LANCASTER, PA.
1710 Rohrerstown Road (717) 569-2648

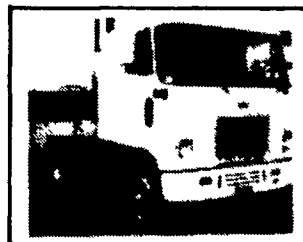
A FULL SERVICE LEASING COMPANY



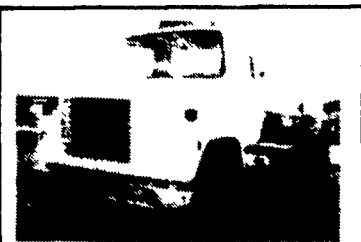
1979 Freightliner FLT 8664T T/A D/S 160 WB 400 Cummins 13 spd A/C AM/FM Stereo Air Slide 5th Wheel 11 00x24 5 Steel disc



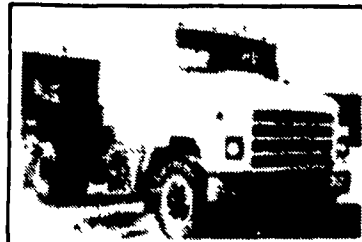
1978 Ford LNT9000 T/A D/S 150 WB Detroit 6V42T1 Eng. RT950 A 9 spd trans P/S steel disc wheels 11 00x 4 Tire A/C Reyro Susp



1979 Chevrolet D9L042 S/A D/S 142 WB 6 71 N Detroit eng RT910 10 spd trans P/S A/C 10 00x20 s Engine Overhauled

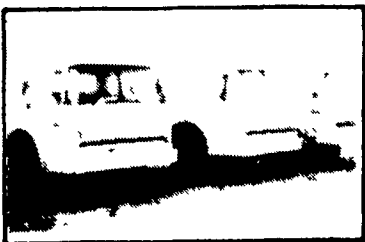


1978 Ford LN9000 S A D/S 150 WB 6 71 N Detroit HT 11 111 spd trans P/S A/C NEW PAINT

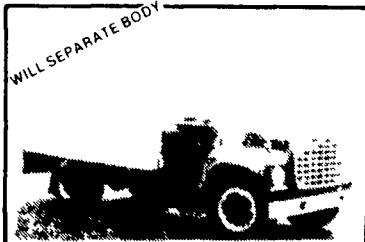


1979 IHC 2125 136 WB V537 eng Spicer 5 spd 2 spd rear Air brakes P/S AM/FM new 10 00x20 tires

VANS AND REEFERS



(2x) 1978 Fords C7000 24 Cab & Chassis 27 500 GVW CAT 3208 (200 HP) 5 spd Trans 2 spd rear P/S Engines Overhauled



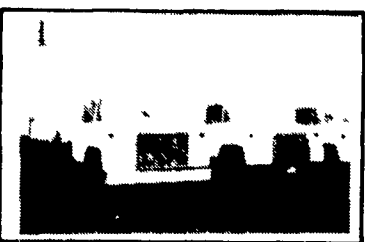
1978 Ford LN7000 14 ft Reefer 27 500 GVW Cat 3208 175 HP Clark RR V 5 spd 2 spd rear P/S 14 ft Duralite Body 13000 mi on rebuilt eng New Thermo King Eng & Compressor New Paint



1977 Ford LN7000 14 Reefer 27 500 GVW CAT 3208 175 H.P. Clark 397 V 5 spd trans 2 spd rear P/S 14 Duralite Body MWC 20 TK unit New Paint!



1979 IHC C01610B 16 Van 137 WB 392 V8 Eng 5 spd trans P/S 9 00x20 Tires 16 Morgan body Overhead rears curb & roadside doors Trans Rebuilt New Paint



1978 & 1979 GMC & IHC 11'x14' Vans, Same Auto Trans Available with Walk Ramps or Lift Gates. L's make it will paint your color



1978 MORGAN TS85 14 14 Aluminum Body roll up Rear door curbside door slatbed interior

All equipment offers no known defects and is available for inspection and road test. Lifetime maintenance records are available for your review. All equipment exceptionally clean & well maintained. Our customers are completely satisfied with their fully reconditioned and recently inspected purchases.

Other Makes and Models To Choose From
CALL FOR MORE DETAILS