

# Case introduces tractor series

RACINE, Wi. — J I Case has unveiled four new 94 Series high horsepower four-wheel-drive agricultural tractors — the most powerful models in the Case line. Models 4494, 4694, 4894 and the all-new 4994 feature manufacturer's estimated gross engine horsepower of 213, 261, 300 and 400 respectively (159 kW, 194 kW, 223 kW and 298 kW).

These new energy- and tractive-efficient models feature new human engineering designs that help improve operating efficiency and productivity while increasing the farmer's sensitivity to the tractor's actual field operations. These models also incorporate several new internal designs to extend service life.

### New Instrumentation

The new digital instrumentation cluster, the most advanced in the agricultural tractor industry, provides systems monitoring and field operating data for the operator. It opens a new line of communication between the tractor and the operator and is available in either English or metric units of measurement.

All critical functions are monitored with a multi-leveled warning system that provides both visual and audible alarms. Farmers are able to monitor various performance outputs and tractor functions at the touch of a button.

Another advantage of the "Intelligence Monitoring System" is the use of the true ground speed sensor option to determine actual wheel slippage.

### Power Shift Transmission

Case Models 4494, 4694 and 4894

feature a standard 12-speed powershift transmission with electrically activated, hydraulically activated sequenced power shifts. This new shifting feature provides a low effort, consistent shifting sequence, regardless of temperature variations.

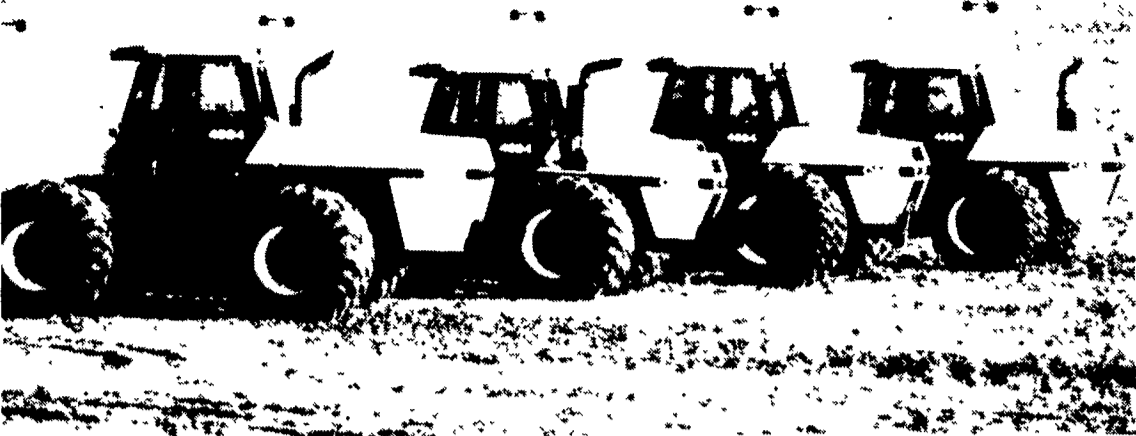
Standard on the Model 4994 is a single control lever, full range 12-speed full powershift transmission and an electronic microprocessor control with diagnostics to monitor the electrical and electronic functions of the transmission and the electronic four-way selective steering system.

### Silent Guardian Cab

The new Case "Silent Guardian" cab is designed to help the operator work more comfortably and productively, in a pleasing gray, color-coordinated interior.

Cab entry is simplified by a repositioned handrail and a top mount door cylinder that opens the door at the "touch" of a handle. Operator entry is further enhanced by a three-step design on Models 4494, 4694 and 4894, with one additional step available as an option. Four steps are standard on the 4994.

Standard is a new Case air/oil suspension seat that operates and adjusts more smoothly than mechanical systems. It is designed to isolate the operator from fatigue caused by the constant movements experienced during tractor operation. Features include a lumbar adjustment, 20 degree right and left swivel capabilities, weight/height adjustments and pressure regulation to fit the ride to the individual operator.



Four new 94 Series four-wheel-drive tractors are the most powerful found in the J I Case line.



### AUTO/TRUCK DIESEL TREATMENT totally disperses water.

It eliminates water even better than water separators. It also keeps injectors clean, improves engine efficiency, and contains no harmful alcohol. Use it in every tankful all year 'round. IT COSTS SO LITTLE TO PROTECT SO MUCH. Use Auto/Truck Polarized Flow Improver during the wintertime to prevent waxing and gelling.

### DIESEL FUEL INJECTION & TURBO CHARGER SPECIALIST

Master Warehouse Distributor

DIESEL TUNE-UP AVAILABLE Call for Appointment

### MILLER DIESEL INC.

6030 Jonestown Rd., Harrisburg, Pa 17112  
717-545-5931  
Interstate 81 Exit 26

## SPECIAL SALE

### LOW-COST, Trouble free Nipple Drinkers!

Easy to clean, Easy to change

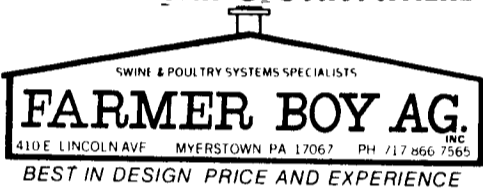


1/2" For Pigs & Sows \$2.75 ea  
3/8" For Baby Pigs \$2.25 ea

### ONE-PIECE BODY

- Solid Stainless Steel construction, no tubes, sleeves or inserts. Smooth Finish
- Easily Removable Screen Holder
- Brass Orifice
- Heavier Springs - No More Breaking of Springs

WE WILL SHIP UPS ANYWHERE



## FRANK A. FILLIPPO, INC.

# — WANTED —

## DISABLED & CRIPPLED COWS, BULLS & STEERS

## Competitive Prices Paid

## Slaughtered under government inspection

Call:

Frank Fillippo -  
Residence - 215-666-0725  
Elam Ginder - 717-367-3824  
C.L. King - 717-786-7229

1970

## 14th ANNUAL SPRING SALE

1984

March 5 to March 24



### FORBES and RED BRAND WIRE

SALE 10% Off Of These Prices

32 In. Fence Wire	6 in. Stay	.....	\$98 <sup>00</sup>
39 In. Fence Wire	6 in. Stay	.....	\$108 <sup>50</sup>
47 In.	6 in. Stay	.....	\$122 <sup>00</sup>
47 In.	12 in. Stay	.....	\$91 <sup>50</sup>
47 In. 6 In. Stay	Solid No. 9	.....	\$195 <sup>00</sup>
16 Ft. Hog	Panels	.....	\$18 <sup>00</sup>
16 Ft. Cattle	Panels	.....	\$22 <sup>00</sup>
12 1/2 Ga. 4 Point	Barb Wire	.....	\$39 <sup>00</sup>

### HI-TENSILE WIRE

• 2000 Ft...\$40<sup>00</sup> • 4000 Ft...\$76<sup>00</sup>

We will have a Hi-Tensile Wire Representative here on March 23rd to demonstrate Hi-Tensile Products.

### FIBERGLASS WHEELBARROW TUBS

Heavy Duty, Chemical Resistant, Will Not Rust, Practically Unbreakable...\$42.00 Retail LESS 10% during sale.

### WE MANUFACTURE EXPRESS WAGONS

Heavy Duty Auto, Steering, Ball Bearing Wheels \$105.00 For Dealer Price Please Inquire.

### CARRIAGE & MACHINE BOLTS

NUTS & WASHERS SPECIAL PRICE

95¢ lb BY THE POUND



(Full & Half Sizes)

### 10% DISCOUNT SALE MARCH 5 TO MARCH 24

HARDWARE — TOOLS - PAINTS RED BRAND FENCING - PIPE PIPE FITTINGS

### MOTOR OIL and IMPRO PRODUCTS

baler twine special \$16.50 a Bale

### 20% OFF

ON \$100.00 WORTH OF PAINT AND PAINT SUPPLIES

We have 1-2-3-4-5-6-7 horse trees ready to go. WE HAVE REDESIGNED OUR SINGLE TREE HOOKS TO FIT THE TRACES BETTER

Extra Special on any Chemicals EX Bicep 17.25 a gal. Check our prices before you buy - Prices apply only until March 15.

FREE GIFTS for the 14 top buyers

NOTICE: On March 10th from 7:30 AM until 4:00 PM We will have a bus here with power tools on display.

## VALLEY ROAD WOOD WORKS

Feed Carts • Express Wagons • Hardware Martin Senour Paints • Kendall Motor Oils R.D. #3, Box 374, Quarryville, PA 17566 1 Mile East of Greentree Hours: 7:30-7:30 Except Wed., Thurs and Sat. we close at 4:00