



Livestock market and auction news

Virginia Auction Summary

February 16-22
 Report supplied by VDA
 Total of Va. Weekly Feeder Cattle Auction Receipts: 4,375.
TREND: steady to \$2 higher.

Southwestern, Va. Auction Summary February 16-22
STEERS: 300-500 lbs. Medium 1 63.00-74.00; Large 1 64.00-74.00; Small 1 57.00-67.50. 500-700 lbs. Medium 1 63.00-73.00; Large 1 64.00-73.00; Small 1 51.50-62.00. 700-1000 lbs. Medium 1 54.00-62.50; Large 1 52.75-64.50.
HEIFERS: 300-500 lbs. Medium 1 53.00-61.50; Large 1 52.00-62.00; Small 1 49.00-57.50. 500-700 lbs. Medium 1 51.00-59.00; Large 1 52.00-63.00; Small 1 47.00-54.50; 700-900 lbs. Medium 1 49.00-55.50; Large 1 47.25-53.00.

Northern Va. Auction Summary February 16-22
STEERS: 300-500 lbs. Medium 1 62.50-74.50; Large 1 64.00-76.00; Small 1 55.00-66.50. 500-700 lbs. Medium 1 59.00-71.00; Large 1 61.50-72.25; Small 1 55.00-66.00. 700-1000 lbs. Medium 1 55.50-63.00; Large 1 56.00-63.50; Small 1 52.50-61.00.
HEIFERS: 300-500 lbs. Medium 1 50.00-61.25; Large 1 51.00-60.00; Small 1 44.50-54.50. 500-700 lbs. Medium 1 48.00-60.00; Large 1 52.50-61.00; Small 1 47.00-51.00. 700-900 lbs. Medium 1 51.00-55.50; Small 1 49.00-49.75.

Southeast Va. Auction Summary February 16-22
STEERS: 300-500 lbs. Medium 1 59.50-66.50. 500-700 lbs. Medium 1 59.50-65.50; Small 1 54.00-55.50. 700-1000 lbs. Medium 1 56.50-62.00.
HEIFERS: 300-500 lbs. Medium 1 50.50-58.00. 500-700 lbs. Medium 1 48.50-54.00.

Shenandoah Valley Livestock

Harrisonburg, Va. Saturday, February 18
 Report supplied by auction
FEEDER CATTLE: Steers: M&L-1 300-500 lbs. 63.00-74.00; 500-700 lbs. 60.00-67.00; 700-1000 lbs. 58.00-62.75. S-1&M&L-2 300-500 lbs. 59.50-64.00; 500-700 lbs. 50.50-60.00; 700-1000 lbs. 53.00-61.00.
FEEDER BULLS: M&L-1 300-500 lbs. 60.00-66.50; 500-700 lbs. 54.00-64.00.
HOLSTEIN STEERS: 40.00-46.50.
HEIFERS: 300-500 lbs. M&L-1 50.00-58.00; 500-700 lbs. 48.00-58.50; 700-800 lbs. 48.00-55.00. S-1&M&L-2 500-700 lbs. 49.50-53.00.
STOCK COWS: Baby Calves 30.00-117.00.
SLAUGHTER COWS: Utility & Commercial 2-4 35.00-45.25. Canner & Cutters 1-3 29.00-38.00.
SLAUGHTER BULLS 1 & 2 46.25-47.25.
LAMBS Trend: High Choice & Prime 60.00; Feeder Lambs Choice 57.00-58.00; Slaughter Ewes 14.00-24.00.
HOGS: US 1-3 200-240 lbs. 45.25; Sows 1-3 42.00-46.25.
VEAL: Choice & Prime 64.00-75.50.
SLAUGHTER CALVES: Good & Choice 61.00-66.00.

Omaha Cattle Thursday, February 23
 Report supplied by USDA
 Weekly 51 - Cattle - Slaughter Steers and Heifers at midweek closed .50-1.00 higher than last week. Weather in the western part of the state curtailed movement and numbers available in western Iowa rather light at present. Packers were in need of numbers for immediate slaughter and a forced type market developed. Recent advances in dressed beef another factor for strength in the live market. Slaughter Cows 1 00-2 00 higher, Slaughter Bulls steady to 1.00 higher.
 Estimated 5 day receipts 7500; actuals last week 9051 and 8303 last year Steers comprised 41 pct of the week's receipts; Heifers 37 pct, Cows 12 pct and Feeders 8 pct.
SLAUGHTER STEERS At the close, scattered loads and lots Choice 2-4 1050-1250 lbs. 67.00-68.00, load 68.75 Upper end of Choice grade poorly represented Mixed Good and Choice 2-3 1000-1150 lbs

79.00; Farm Hfns 52.00-61.00; Farm Bulls 85.00-110.00; Light & Weak 43.00 down. Lambs- Few offered. Medium 52.00-55.50. Slaughter Cows- 300-450 lb. 41.00-50.50; Thin Sows 36.00-40.00.
STOCKER: Steers 300-550 lbs.- \$2.00 lower. Choice 62.00-66.00; Good 57.00-61.00; Medium 52.00-56.00; Culls 51.00 down. Steers 600-850 lbs.- Choice 60.00-63.00; Good 54.00-59.00; Medium 53.00 down. Heifers (All Weights)- Choice 53.00-59.00; Good 46.00-52.00; Medium 45.00-down. Bulls- Choice 56.00-58.00; Good 51.00-55.00; Medium 50.00 down. Open Dairy Heifers- 43.00-52.00. Pigs Hd.- Steady prices. 20-30 lbs. 11.00-24.00; 40-60 lbs. 25.00-30.00. Shoats by lb.- to 43.00. Slaughter Hogs-\$1.50 lower. 200-230 lb. 46.25-46.50; 240-260 lb. 46.10-48.75; 270-285 lb. 44.00-46.00.

Four States Livestock

Hagerstown, Md. Wednesday, February 15
 Report supplied by auction
SLAUGHTER: Fed Steers- \$1.50 lower. Choice 63.50-64.75; Good 58.00-63.00; Medium 57.00 down. Heifers- Good 51.00-55.75; Medium 43.00-50.00. Cows - \$1.00 to \$2.00 lower. High Yield- 41.00-43.50; Average 37.00-40.00; Big Middle 33.00-36.00; Fatty Herf. 31.00-35.00; Shelly 34.00 down Fat Bulls - \$1.00 higher Good 50.00-54.00; Medium 45.00-49.00. Veal Calves- Active & steady prices. Choice 95.00-107.00; Good 80.00-94.00; Medium 70.00-

65.50-67.50. Few Good 62.50-65.00. Choice 2-3 Holsteins, near 1400 lbs. 62.00. Mixed Good and Choice 2-3 60.50, package good 57.00.
SLAUGHTER HEIFERS: Scattered loads and lots Choice 2-4 925-1125 lbs. 65.50-66.50, package 67.00. Mixed Good and Choice 2-3 900-1050 lbs. 62.50-65.50. Few Good 60.00-63.00.
 Average of LS-214 detailed quotations for 900-1100 L Choice Steers 66.90; 1100-1300 lbs. 67.85. Average cost of Steers this week 66.36, average weight 1146 lbs. as compared to 66.47 and 1145 lbs. last week. Average cost Heifers this week 64.63, average weight 970 lbs. as compared to 64.76 and 1001 lbs. last week
SLAUGHTER COWS. Breaking Utility and Commercial 2-3 41.50-45.25. Cutter and Boning Utility 1-2 41.00-43.50, few high dressing to 46.50. Canner and Low Cutter 36.50-42.75.
SLAUGHTER BULLS: 1-2 1100-1800 lbs. 48.25-54.00, individual high-dressing 54.50.

Oklahoma Cattle Wednesday, Feb. 22
 Estimated Receipts: 6500
 Same Day Last Week: 6686
Feeder Steers firm to 1.00 higher with 600-800 lb. weights 1.00-1.50 higher. Feeder heifers under 500 lb. weak to 1.00 lower; over 500 lb. steady to 50 cents higher. Trading moderately active. Demand good; exception outlets narrow for heifers under 500 lb. bulk supply medium and large frame 1 and mixed 1-2 400-800 lb. feeder steers and 350-700 lb. heifers.
FEEDER STEERS: Medium and large frame 1 350-400 lb. 75.80-78.00, lot 365 lb. 81.50; 400-500 lb. 70.25-76.75; 500-600 lb. 68.00-75.00; 600-700 lb. 68.00-70.70, lot 610 lb. 71.50; 700-800 lb. 67.50-70.50; 800-900 lb. 66.00-69.00; two lots 940-965 lb. 65.70-67.50.
Medium and Large Frame Mixed 1-2 300-600 lb. 65.25-69.00; 600-750 lb. 64.25-68.75.
Large Frame 2 Holsteins 500-900 lb. 52.50-54.00.
FEEDER HEIFERS: Medium and Large Frame 1 300-500 lb. 59.25-64.00 several 60.00-62.50; 500-600 lb. 60.00-64.00; 600-800 lb. 63.00-65.60.
Medium and Large Frame Mixed 1-2 275-500 lb. 57.00-61.25; 500-750 lb. 58.25-63.00 mostly 59.00-61.00.
Medium and Large Frame 2 350-475 lb. 54.00-57.00.

with large share carrying mud. Cows and bulls 13%. Receipts this week about 1250 as compared to 1322 last week and 1977 a year ago.
SLAUGHTER STEERS: Choice 2-4 1050-1250 lbs. 66.00-66.50, few part loads 1075-1275 lbs. 67.00-68.00. 975-1050 lbs. 65.00-66.00. Good and choice 2-3 950-1150 lbs. 63.50-66.00. Good 61.00-64.00. Holsteins: Good, few choice 2-3 1150-1250 lbs. 56.50-57.50. Package good 52.00.
SLAUGHTER HEIFERS: Choice 2-4 950-1050 lbs. 65.00-66.50, load 1065 lbs. 67.00 Scattered sales 900-1000 lbs. muddy 64.00-65.00. Good and choice 2-3 850-1050 lbs. 62.00-65.00. Good 60.00-62.00.
COWS: High cutter and boning utility 1-3 41.00-46.00. Cutter 37.00-41.00. Canner 35.00-37.00.
BULLS: Yg 1-2 1400-2100 lbs. 50.00-55.00.

Central U.S. Carlot

Pork Report Wednesday, February 22
 Report supplied by USDA
 Compared to Tuesday's 4:00 report: Fresh Pork Loins 14-17 lbs. steady to lower. Bellies weak to 1.00 lower. Trading moderate, except light on Bellies. Demand light to moderate for moderate offerings.
 Sales reported on 53 loads of Fresh Pork Cuts and 8 loads of Trimmings and Boneless Processing Pork.
Fresh Pork Cuts
LOINS: (Regular) 14-17 lbs. 93.00, couple lds. 95.00, steady-1.00 lower; 17-22 lbs. 93.00-95.00, 1.00-2.00 lower.
LOINS: (Retail Trim) 14-17 lbs. 104.00, weak; 14-17 lbs: 104.00-109.00, short cut, generally steady, 14-17 lbs 104.00, ship March 1-5.
BOSTON BUTTS: 4-8 lbs. 73.00.
SKINNED HAMS: 14-17 lbs 67.00, 1.00-1.50 lower; 17-20 lbs 64.00-65.00, steady.
BELLIES, SDLS, SKIN ON: 10-12 lbs. 46.00, weak; 18-20 lbs. 47.00
BNLS CT BUTT: 1.5-3 lbs. 115.00 frozen, no comparison.
Pork Trimmings
Boneless Processing Pork (Chemical Lean)
 42% Lean Trimmings Fresh 41.00, no comparison.
 42% Lean Trimmings Frozen 40.00, no comparison.
 72% Lean Trimmings Fresh 64.00, PL, no comparison.
 72% Lean Trimmings Fresh 65.00, steady.
Bnls Picnics Fresh 64.00, no comparison.
Jowls, Fresh 32.50, PL, steady

New Holland Horse
New Holland Sales Stables Monday, February 20
 Report supplied by auction
 Reported receipts of 237 head of horses, mules, and ponies. Market steady
LOCAL
 Better horses 450 00-725 00, few reg 800 00-1050 00.
 Driving horses 300.00-500.00
 Riding horses 300.00-400.00.
 Lightweight killers 250.00-375 00;
 Heavyweight killers 400.00-580 00
 Mare Ponies 25.00-75.00; Colts 10 00-20 00, Gelding Ponies 25.00-75.00
 Larger ponies 125.00-255.00

VINTAGE SALES STABLES, INC. AUCTIONS

Starting **THURSDAY, NOV. 3, 1983**
 Every Thursday at 1 P.M.
HAY, STRAW & GRAIN
 Sold on Commission
 10 miles east of Lancaster, 8 miles west of Coatesville on Rt. 30, Paradise, PA.
 L. Robert Frame, Manager
 For information
 717-442-4181
 215-458-8518

LOUIS LYONS & SON

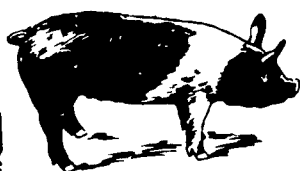
Consign your cattle and hogs, feeder pigs & calves to Louis Lyons & Son. They offer choice service, excellent sorting & marketing of your livestock.

Charles Diller, Manager
 Phone 394-7915
 Burnell Siegrist - Buyer & Seller
 Phone 626-8653

Experienced Personnel Immediate Weighing

HATFIELD ATTENTION YORK CO. FARMERS Looking!!! For Quality Hogs

Every Monday
HATFIELD PACKING CO.
 BUYING STATION AT
SECHRIST SALES CO.
 LIVESTOCK AUCTION
 R.D. 1 Stewartstown, PA
 .. Top Select Price on #1 & 2 Hogs 210-245 lbs.
 .. We will receive your hogs from 6 A.M. until 11 A.M.
 .. Your hogs will be weighed & paid for immediately
 There will not be a commission or yardage fee
 You may call our office Monday morning for base price
 Please give us a chance to market your hogs
FOR INFORMATION CALL 717-993-6130



EMERY'S BUYING STATION

OPEN TO RECEIVE YOUR MARKET HOGS
AT THE GREEN DRAGON MARKET
 RD 4, EPHRATA, PA 17522
 1 MILE NORTH OF EPHRATA ON NORTH STATE STREET.

HOURS
MONDAY, TUESDAY, and WEDNESDAY
 6:00 A.M. to 11:30 A.M.

215-458-5677 Residence
 717-733-9648 Office

YOU ARE PAID FOR YOUR HOGS IMMEDIATELY

Ken & Lois Emery, Proprietors

IVAN ZOOK and CO. Hauling

- Hay & Straw & Corn
- Tobacco
- Equipment
- Lumber
- Livestock
- Skid Loader Rental

Will Haul To Auction
 R.D. 1
 Gap, PA 17527
 Call Anytime
717-768-3052

KING'S AUCTION, KIRKWOOD

Hay, Straw and Grain Auction Every **EVERY TUESDAY**
 12:00
 Located Rt. 472 5 miles south of Quarryville or 6 miles north of Oxford at Shaub's Auction House.
 No out of state checks
ALL TRUCKERS AND FARMERS WELCOME