

Livestock market

THE OLD FARMER'S ALMANAC

FEB. 27-MARCH 4, 1984

The door to March shows snow inside.

Women have the say this Leap Year Joe Louis retired March 3, 1949
 New moon March 2 (Fri) Average length of days for the week,
 11 hours, 14 minutes Lindbergh baby kidnapped March 2, 1932
 First Victory Ship launched Feb 29, 1944 Revolutions are not made,
 they come



Ask the Old Farmer: Would you give the origin and significance of the placing of an "eagle" over the front door of a home? S.R., Fort Wayne, Indiana

It is said that the Norsemen hung scalps of wolves, horns of animals, and other relics of the chase over their doorways a thousand years ago. Our notion is that the eagle, of wood or metal is an adaptation of this ancient custom.

Home Hints An old wire eggbeater makes a good paddle for stirring and mixing paint

OLD FARMER'S WEATHER FORECASTS

New England: Seasonable temperatures with snow in the north start the week, cold, then snow mid to end of week

Greater New York-New Jersey: Beginning of week brings cold temperatures with flurries, clear and cold midweek, snowstorm likely at end of week

Middle Atlantic Coastal: Seasonable at week's start, cloudy, then snow and cold midweek on

(All Rights Reserved Yankee Publishing Incorporated Dublin NH 03444)

Greencastle Livestock

Greencastle, Pa.

Monday, Feb. 20

Report Supplied by Auction

343 hd.

CATTLE: Butcher Steers - Choice 65.00-70.00; Butcher Steers - Medium - Good 54.50-67.00; Butcher Heifers - Choice - 63.00-69.25; Butcher Heifers - Medium - Choice - 45.00-65.00; Butcher Cows - Utility - Good 40.00-47.00 few to 49.00; Butcher Cows - Canners and Cutters - 38.00-45.00; Butcher Cows - Shells 37.00 & down; Butcher Bulls - Medium - Good - 44.00-58.00; Stock Steers - Medium - Good up to 67.00; Stock Heifers - Medium - Good up to 55.00.

263 hd.

CALVES: Medium-Good Calves - 160-220 lbs. 85.00-100.00; Medium-

Good Calves - 125-160 lbs. 70.00-90.00; Medium-Good Calves - 100-120 lbs. 55.00-75.00; Medium-Good Calves - 80-100 lbs. 50.00-65.00; Holstein Bull Calves up to 106.00; Holstein Heifer Calves up to 70.00; Light and Green Calves down 30.00.

10 hd.

SHEEP and LAMBS: Medium-Good Lambs - 50.00-53.00.

132 hd.

HOGS: Good-Choice Butcher Hogs 190-225 lbs. 43.00-47.00; Good-Choice Butcher Hogs 225-280 lbs. 45.00-47.00; Good-Choice Butcher Sows 400 lbs., up to 49.00; Good-Choice Butcher Sows 400 lbs., up to 45.00; Heavy Boars up to 33.00; Feeding Shoats - Per Hundred - 40.00-45.00; Pigs - Per Head - 8.00-27.00.

Penns Valley Livestock

Centre Hall, Pa.

Tuesday, February 21

Report supplied by auction

Beef Cows: Utility and Commercial 40.50-44.25; Cutters 37.25-40.10; Canners 34.50-36.75; Shells 27.25.

Heifers: Good 53.75-56.85; Standard 48.25-51.50; Commercial 37.50-45.25.

Steers: Good 51.00-55.00; Standard 42.50-48.75.

Bulls: Good 50.85-52.50; Standard 45.50-50.00.

Feeder Cattle: 300-500 lbs. large frame 48.00-61.00; 300-500 lbs. small frame 46.00-56.00; 500-700 lbs. large frame 42.00-55.00; 500-700 lbs. small frame 45.00-53.00.

Veal Calves: Prime 96.00-108.00; Choice 77.00-95.00; Good 63.00-78.00; Standard 53.00-62.00; Utility 42.00-52.00.

Farm Calves: Bulls 88.00-114.00; Heifers 66.00-78.00.

Hogs: 43.50-46.25.

Sows: 36.50-41.25.

Boars: 29.50-34.00.

Shoats: 25-30 lbs. per head 10.00-14.00; 30-35 lbs. per head 16.00-21.00; 35-50 lbs. per head 23.00-28.00.

Goats: per head 21.00-33.00.

East Coast Carlot

Wednesday, February 22

Report supplied by USDA

Compared to Tuesday's close: Demand moderate for light supplies of Prime Special Fed Veal; limited sales generally steady. Good and Choice Boning Veal 3.00 to 4.00 lower than Friday's last reported sales; inshipped not tested. Lamb Market slow to develop, generally steady tone at best. Boneless Beef and Trimming not established, undertone firm.

VEAL CARCASS

Prime (Special Fed)

Hide On 80 Head

220-280 lbs. LTD 170.00, generally steady.

Good & Choice

Boning Type

Hide On

Northeastern Suppliers: 3.00-4.00 lower than Friday. 65-75 lbs. 88.00-91.00; 55-64 lbs. 86.00-89.00; 45-54 lbs. 84.00-87.00; 34-44 lbs. 82.00-85.00; 34 lbs. down 80.00-83.00.

Inshipped: No sales reported.

LAMB CARCASS

1 Load

Choice and Prime 3-4, 1 load, 60 lbs. down 128.00.

Joliet Livestock

Thursday, February 23

CATTLE: Friday through Wednesday's salable receipts 1300; 5 days last week 2318; same period a year ago 2182; Trading moderately active for the week. Slaughter steers ended the week 1.00-2.00 higher compared with Wednesday of last week. Slaughter heifers ended the week 1.00-1.50 higher. Cows ended the week steady.

SLAUGHTER STEERS: Choice few prime load 3-4 1320# 70.00 Wednesday, load mostly 4 1380# 68.75 Monday. Choice 2-4 1050-1350# 66.00-67.00, 1 load 68.50; load 68.75 Monday; 66.50-68.75 Wednesday. Mixed good and choice 2-3 1000-1250# 65.00-66.25, 65.50-67.00 Wednesday.

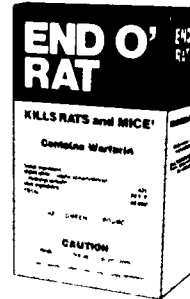
SLAUGHTER HEIFERS: Choice 2-4 950-1100# 65.50-67.25. Mixed good and choice 2-3 850-1000# 62.50-65.00 Monday; 64.00-66.00 Wednesday. Good 2 850-1000# 60.00-62.00 Monday; 61.00-64.00 Wednesday.

COWS: Few Canner and low cutter 1-2 37.00-39.00.

Kills rats and mice!

End O' Rat works fast to kill unwanted rats and mice. Completely safe for use around the home, farm or factory buildings, End O' Rat is specifically formulated to appeal to the natural feeding habits of rats and mice. And End O' Rat contains Warfarin— for proven effectiveness. Put End O' Rat to work for you today!

END O' RAT



Distributed by

Animal Medic Supply
 Manchester, PA
 1-800-632-1831

David Laub
 Allentown, PA
 215-797-6530

FRIDAY, MARCH 16 ON THE FARM MONTHLY BRED GILT SALE

Sale to Start Promptly at 1:00
 Every 4 Weeks

Located 18 miles south of Lancaster, Pa., 6 miles south of Quarryville, take Rt. 272 to Little Britain, turn north, follow Little Britain Road to Jackson Road, 2nd farm, OR take Rt. 222, out of Quarryville to Cedar Hill Road to Little Britain Road to Jackson Road. Watch for sale arrows.

50 to 60 Head

Now selling our new hybrid gilts representing mostly York & Hampshire & Landrace cross. Bred for easier & Less trouble over farrowing and better weight gains.

Validated Brucellosis Free Herd #169
 Qualified Pseudorabies Free Herd #55

Hand mated with Breeding Dates

Local Trucker Available
 No Hogs Sold On Commission

CHRIST A. BEILER
 R.D. 2, Quarryville, Pa
 JOHN B. STOLTZFUS
 R.D. 1, Kirkwood, Pa

Abe Diffenbach, Auctioneer

NEXT SALE DATE APRIL 13



Be Wise . . .
 Check our
 prices before
 you buy!!

SPRAY MATERIALS

- * ATRAZINE
- * DUEL
- * BICEP
- * LASSO
- * SUTAN +
- * BLADEX
- * LASSO-ATRAZINE
- * TOXEPHENE
- * PARAQUAT
- * PRINCEP
- * FURADAN
- * COUNTER
- * DYFONATE
- * ETC.

MELVIN R. WEAVER

2213 Leabrook Road, Lancaster, PA 17601
 Ph: 717-569-6576 or 898-8354

Green Dragon Livestock Sales



1 Mile North of Ephrata, PA

COWS COWS COWS
 BUYERS FROM 3 STATES

Regular consignments from
 Bob Kennedy & Ed Stover plus 15
 other local consignors.
 Lots of good Northern
 Feeders and Stockers.

SALE EVERY FRIDAY

Bulls, Steers, Slaughter Cows,
 Lambs and Veal Calves
 11:00 A.M. - Beef Sale Stockers & Feeders
 200 to 250 each week.
 12:30 P.M. - Dairy Cows
 7:00 P.M. - Small Animal Sale

For Special Sales and Herd Dispersals
 on the farm or at our barn or other
 market information call: Office 717-733-
 2444.

WALTER H. RISSER, Proprietor



ATTENTION FARMERS

EVERY MONDAY
 HATFIELD PACKING CO. and
 MOYER PACKING CO.

Will Receive Your
 Hogs and Cattle at the

DANVILLE LIVESTOCK MARKET

RD4, Danville, PA

- We will receive your hogs from 8 AM to 12 Noon every Monday. Your hogs will be weighed and paid for immediately.
- We will also accept your sows & boars
- Your cattle will be received from 12:30 to 5 P M. We will either pay you for your cattle immediately or you may sell them dressed weight
- There will not be a commission or yardage fee deducted from your check.
- You may call our office Monday morning and we will be able to tell you the base price for hogs for the day.

MELVIN M. LEHMAN - Owner
 Danville Buying Station
 Phone: 717-275-2880