



## Virginia Auction Summary

February 9-15  
Report supplied by VDA  
Total of Va. Weekly Feeder Cattle Auction Receipts: 3,954.  
TREND: steady to \$5 higher.  
Southwestern, Va.

**Auction Summary**  
February 9-15  
STEERS: 300-500 lbs. Medium 1 63.00-75.00; Large 1 64.00-74.00; Small 1 53.00-64.50. 500-700 lbs. Medium 1 55.00-69.00; Large 1 57.00-67.00; Small 1 53.00-64.00. 700-1000 lbs. Medium 1 55.00-62.00; Large 1 55.00-62.00.

HEIFERS: 300-500 lbs. Medium 1 50.00-59.50; Large 1 52.00-59.00; Small 1 46.50-57.50. 500-700 lbs. Medium 1 50.00-57.50; Large 1 46.00-56.75; Small 1 45.00-54.50; 700-900 lbs. Medium 1 48.00-54.50; Large 1 43.00-54.50.

# Livestock market and auction news

## Northern Va. Auction Summary February 9-15

STEERS: 300-500 lbs. Medium 1 65.00-75.50; Large 1 64.00-70.50; Small 1 52.50-63.00. 500-700 lbs. Medium 1 58.00-67.25; Large 1 60.00-68.50; Small 1 54.00-62.00. 700-1000 lbs. Medium 1 54.00-63.50; Large 1 60.00-61.85; Small 1 56.00-66.75.

HEIFERS: 300-500 lbs. Medium 1 47.75-57.00; Large 1 50.00-55.50; Small 1 43.50-59.00. 500-700 lbs. Medium 1 48.00-58.00; Large 1 47.00-56.00; Small 1 47.00-56.00. 700-900 lbs. Medium 1 48.00-55.00; Large 1 55.00; Small 1 53.00.

## Southeast Va. Auction Summary February 9-15

STEERS: 300-500 lbs. Medium 1 61.00-65.00; Small 1 63.25-65.75. 500-700 lbs. Medium 1 57.50-65.10; Large 1 56.00-64.25; Small 1 62.50-64.80. 700-1000 lbs. 57.00-61.00; Large 1 61.75.

HEIFERS: 300-500 lbs. Medium 1 47.50-56.25; Small 1 53.00-56.75. 500-700 lbs. Medium 1 51.00-55.00. 700-900 lbs. Medium 1 46.00-49.00.

## Shenandoah Valley Livestock

Harrisonburg, Va.

Saturday, February 11

Report supplied by auction

FEEDER CATTLE: Steers: \*V-L-1 300-500 lbs. 64.00-72.00; 500-700 lb. 59.00-73.00; 700-1000 lbs. 55.00-62.50. Holstein 300-1000 39.00-46.50. S-1&M&L-2 300-500 lbs. 52.50-58.00; 500-700 lbs. 52.00-64.00; 700-1000 lbs. 50.50-55.50.

FEEDER BULLS: M&L-1 500-700 lbs. 51.00-55.00; 700-1000 lbs. 46.00-48.00. S-1&M&L-2 300-500 lbs. 48.00-53.50; 500-700 lbs. 49.00-51.50. Heifers: M&L-1 300-500 lbs. 52.00-60.00; 500-700 lbs. 47.50-57.00; 700-800 lbs. 48.00-55.00. S-1&M&L-2 300-500 lbs. 54.00-59.00; 500-700 lbs. 50.00-56.00.

STOCK COWS: Baby Beef 25.00-127.50, mostly 60.00-80.00.

SLAUGHTER CATTLE: Steers-

Choice 2-4 62.75-64.50. Heifers-Choice 2-4 57.50-62.00.

SLAUGHTER COWS Trend: Utility & Commercial 2-4 35.00-43.50. Canner & Cutters 1-3 30.00-36.75.

SLAUGHTER BULLS 1 & 2 41.50-51.00.

LAMBS Trend: High Choice & Prime 59.75; Choice 56.00; Slaughter Ewes 15.00-21.00.

HOGS: US 1-3 200-240 lbs. 48.70; Sows 1-3 39.00-53.00.

VEAL: Choice & Prime 85.00; Good 65.00-75.00.

## Four States Livestock

Hagerstown, Md.

Wednesday, February 8

Report supplied by auction

SLAUGHTER: Fed Steers- \$1.50 higher. Choice 64.00-67.50; Good 59.00-63.00; Medium 58.00 down. Heifers - Choice 62.00-65.50; Good 56.00-61.00; Medium 55.00 down. Cows - Good run \$2.00 higher. High Yield- 42.00-46.00; Average 38.00-41.00; Big Middle 33.00-37.00; Fatty Herf. 32.00-35.00; Shelly 35.00 down. Fat Bulls - Steady price. Good 48.00-51.50; Medium 42.00-47.00. Veal Calves- \$3.00 to \$6.00 higher. Choice 95.00-105.00; Good 80.00-94.00; Medium 70.00-79.00; Farm Hfrs to 57.00; Farm Bulls 90.00-112.00; Light & Weak 43.00 down. Lambs- Steady. Choice & Good 54.00-57.25; Medium 47.00-53.00.

STOCKER: Steers 300-550 lbs.- \$3.00 to \$5.00 higher. Choice 65.00-70.00; Good 59.00-64.00; Medium 53.00-58.00; Culls 52.00 down; Dairy Type 42.00-48.00. Steers 600-850 lbs.- Choice 60.00-65.00; Good 54.00-59.00; Medium 53.00 down; Dairy Type 40.00-50.00. Heifers (All Weights)- Choice 50.00-55.00; Good 44.00-49.00; Medium 43.00-down. Bulls- Choice 55.00-58.00; Good 49.00-54.00; Medium 48.00 down. Springing Heifers- to 535.00. Pigs Hd.- Steady prices. 20-30 lbs. 15.00-25.00; 40-50 lbs. 26.00-31.00. Shoats by lb.- 37.00-46.00. Slaughter Hogs- One lot at 49.75. 215-230 lb. 47.50-49.00; 240-260 lb. 47.50-48.75; 190-210 lb. 39.00-45.00. Sows- 400-650 lb. 44.00-49.25; 275-375 lb. 40.00-43.00.

## Eighty-Four Livestock

Eighty-Four, Pa.  
Monday, February 13  
Report supplied by PDA

CATTLE 331. Compared with last Monday's market, slaughter cows \$2.00-3.00 higher, spots \$4.00 higher. Choice slaughter steers 63.50-65.50, Good 57.00-63.00, Standard 51.50-57.25, few Utility 46.00-49.50. Choice slaughter heifers 57.50-60.50, Good 53.50-56.00, few Standard 47.50-52.00, few Utility 45.00-48.00. Breaking Utility & Commercial slaughter cows 42.00-45.00, few 46.00. Cutter and Boning Utility 37.00-42.50, Canner & Low Cutter 31.00-37.50, Shells down to 23.00. One Choice slaughter bullock at 62.25. Yield Grade #1 1100-1900 lbs. slaughter bulls 50.00-57.75, Yield Grade #2 1000-1600 lbs. 42.00-46.00.

FEEDER CATTLE. Medium Frame #1 450-600 lbs. feeder steers 58.00-65.00, few Medium Frame #2 400-600 lbs. 43.00-48.00. Medium Frame #1 350-550 lbs. feeder heifers 50.00-58.00.

CALVES 232. Vealers grading Good & Choice \$5.00-\$10.00 lower, Standard & Good strong - \$1.00 higher. Choice Vealers 90.00-107.00, Good 84.00-92.00, Standard 60.00-80.00, Standard & Good 90-120 lbs. 55.00-61.00, 60-85 lbs. 45.00-55.00, Utility 55-90 lbs. 40.00-46.00.

FARM CALVES. Holstein Bulls 90-125 lbs. 65.00-110.00. Good & Choice 300-450 lbs. slaughter calves 55.00-67.00.

HOGS 94. Barrows & gilts \$1.00-\$1.50 lower. US No. 1-2 230-250 lbs. barrows & gilts 48.00-48.75, No. 1-3 220-265 lbs. 47.00-48.10, few No. 2-3 220-250 lbs. 45.00-47.00, lot No. 1-3 150 lbs. at 35.75. Sows: US No. 1-3 300-600 lbs. 40.00-46.50, No. 2-3 300-550 lbs. 34.00-38.00. Boars 26.00-36.00.

FEEDER PIGS 30. One lot US No. 1-3 72 lbs. feeder pigs at 25.25 per head. Utility 25-80 lbs. 10.00-16.00 per head.

SHEEP 180. Wool slaughter lambs \$1.50-\$2.00 higher. High Choice & Prime 75-112 lbs. wool slaughter lambs 60.00-65.50, Good 60-67 lbs. 55.00-57.00, Choice 37-53 lbs. spring slaughter lambs 64.00-69.00. Slaughter Sheep 14.00-25.50. Goats 12: 8.50-28.00 per head.

## KING'S AUCTION, KIRKWOOD

Hay, Straw and Grain Auction Every EVERY TUESDAY

12:00

Located Rt. 472 5 miles south of Quarryville or 6 miles north of Oxford at Shaub's Auction House.

No out of state checks

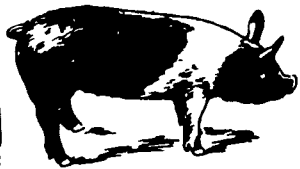
ALL TRUCKERS AND FARMERS WELCOME

## Hay, Straw, Corn & Misc. SALE EVERY MONDAY

12 NOON

Dewart Livestock Auction  
Dewart, PA

For information call  
George Deitrick 717-568-5454  
or H.H. Mylin 717-568-7271



## EMERY'S BUYING STATION

### OPEN TO RECEIVE YOUR MARKET HOGS

AT THE GREEN DRAGON MARKET  
RD 4, EPHRATA, PA 17522  
1 MILE NORTH OF EPHRATA  
ON NORTH STATE STREET.

HOURS  
MONDAY, TUESDAY, and  
WEDNESDAY  
6:00 A.M. to 11:30 A.M.

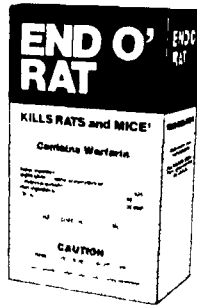
215-458-5677 Residence  
717-733-9648 Office

YOU ARE PAID FOR YOUR HOGS IMMEDIATELY

Ken & Lois Emery, Proprietors

## Kills rats and mice!

End O'Rat works fast to kill unwanted rats and mice. Completely safe for use around the home, farm or factory buildings. End O' Rat is specifically formulated to appeal to the natural feeding habits of rats and mice. And End O' Rat contains Warfarin - for proven effectiveness. Put End O' Rat to work for you today!



## END O' RAT

Distributed by

New Holland  
Supply Co.  
New Holland, PA  
717-354-2340

Caldwell  
Supply Co.  
West Trenton, NJ  
609-882-2223



## ATTENTION YORK CO. FARMERS

Looking!!! For Quality Hogs

Every Monday  
HATFIELD PACKING CO.  
BUYING STATION AT  
SECHRIST SALES CO.  
LIVESTOCK AUCTION  
R.D. 1 Stewartstown, PA

.. Top Select Price on #1 & 2 Hogs 210-245 lbs.

.. We will receive your hogs from 6 A.M. until 11 A.M.

.. Your hogs will be weighed & paid for immediately

.. There will not be a commission or yard-age fee

.. You may call our office Monday morning for base price

.. Please give us a chance to market your hogs

FOR INFORMATION CALL  
717-993-6130



## BUTLER FOODS INC.

We will receive your market hogs

\* Our New Winter Hours \*  
8 AM - 12:45 PM

Mondays, Wednesdays,  
Thursdays & Fridays

Located at the Vintage Sales  
Stables, Paradise, PA

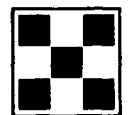
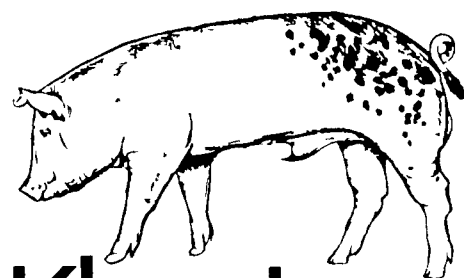
You will be paid immediately.

No commission or  
yard fees deducted.

Reduced waiting time.

Premium prices are paid  
for extra fancy hogs.

Call Ed Herrmann  
for daily market quotations  
717-442-4742



Purina Dealer

## KleenLeen Checker™ Boars

- All Boars Performance Tested For True Genetic Potential.
- 4 Purebred and 3 Crossbred Lines
- Strict Health Control Program And Written Health Warranty
- Proven Breeding Programs.

SEE YOUR PURINA DEALER TODAY

### KEYSTONE MILLS

John B Kurtz  
PHONE 717 354 4616 717 738 1088  
RD3 EPHRATA PA 17522



### HESS MILLS

PHONE 717 442 4183  
717 768 3301  
PARADISE PA 17562

### K & K FEED, INC.

PHONE 717 866 2324  
23 N PARK ST RICHLAND PA 17087

### WOODSTOWN ICE & COAL CO.

PHONE 609 769 0069  
WOODSTOWN N J 08098

No One  
Offers  
More