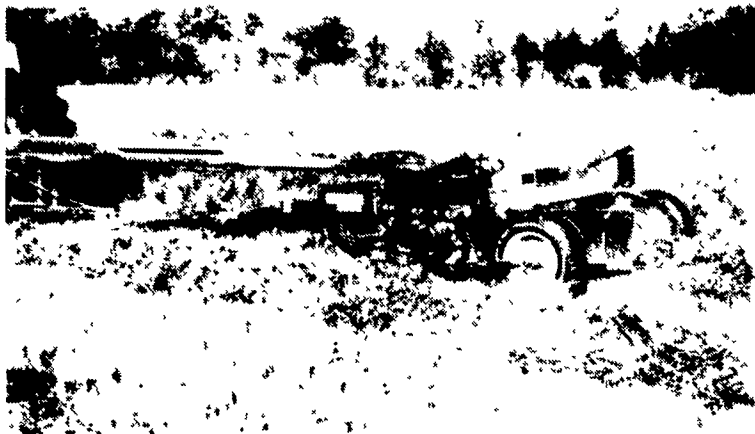




BUSINESS NEWS...



Mower conditioners from Gehl feature high-speed disc cutting.

Gehl reports disc MC's

WEST BEND, Wis. — Gehl Company announces the addition of two high-speed disc mower conditioners to its line of hay cutting machines.

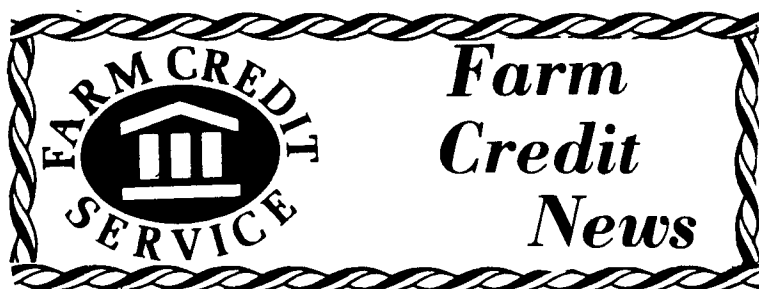
Both conditioners feature a high speed disc cutting system that cuts the crop quickly without plugging. The DC2330 has a 9'5" cutting width and uses seven oval discs with two knives each. The DC2350 has a 10'6" cutting width and uses eight triangular shaped discs with three knives each. In both machines, the discs operate at 3,000 RPM.

The conditioners also have full-width conditioning rolls that reduce crop drying time and windrow shields that adjust to

form everything from high, fluffy windrows to full-width swaths.

Another feature is the patented drawbar drive system that maintains perfect alignment while allowing a high degree of maneuverability. The driving gear case is mounted on the drawbar which attaches to the lower links of a tractor's 3-point hitch. The conditioner pivots about its center shaft and the pto shaft remains fixed.

The DC2330 and DC2350 complement Gehl's line of haymaking equipment that includes swing and fixed frame mower conditioners, disc mowers, round balers, forage harvesters and fingerwheel hay rakes.



Annual meeting on Mar. 5-6

WEST CHESTER — Stockholders of the Southeast Federal Land Bank Association and Southeast Production Credit Association will conduct their annual joint meeting on Monday, March 5 and Tuesday, March 6. For the convenience of members, the meeting will be held in two sections.

The Oxford Fire Hall, Oxford, Chester County, will be the location of the Monday, March 5 meeting with registration scheduled for 6:15 p.m. and dinner at 7 p.m.

The Christopher Dock Mennonite High School in Kulpville, Montgomery County will be the location of the Tuesday, March 6 meeting. The same schedule will apply.

The election of two Southeast PCA directors and two Southeast FLBA directors will take place as well as the election of the 1985 Nominating Committees. Kenneth S. Risser, General Manager, will report on the Associations' operations during the past year. Abbreviated financial reports will be available. Pat Leimbach, a farm wife and newspaper columnist, will be the speaker/entertainer at both meetings.

The farmer-owned and farmer-operated Associations serve agriculture in Bucks, Chester, Delaware, Montgomery and Philadelphia counties with short-, intermediate- and long-term loans. The Associations currently have over 2,000 members with loans outstanding in excess of \$130,000,000.

Stockholders are urged to attend the meeting at the location most convenient for them.

PennAg speaker named

EPHRATA — Alvin E. Oliver, Executive Vice President of the National Grain and Feed Association (NGFA), will speak at the 1984 PennAg Industries Association Convention at the Host Corral, Lancaster.

Prior to joining the National, Oliver held an assistant professorship at Michigan State University in 1954. While at M.S.U., he developed the first grain elevator industrial program offered by a major university.

Eby dedicates addition

BY JACK HUBLEY

BLUE BALL — M.H. Eby, the East Coast's largest manufacturer of livestock trailers and truck bodies, celebrated 46 years of service with the dedication of its new facility on Feb. 10.

Located one-quarter-mile east of Blue Ball on Rt. 23, the new 27,000-square-foot building will triple the company's working area. The expansion, made possible by a loan from the Lancaster Industrial Development Corporation, will permit product modernization and rapid response to customer needs, according to Eby's Sales and Marketing Manager, Darryl Breniser.

Founded in 1938 by Menno H. Eby, Sr., the firm became well-known for its quality wooden wagons and cattle bodies. In 1972, Eby's son, Menno, Jr., purchased the business and, with only four employees, began production of their all-aluminum livestock bodies. The new light-weight and maintenance-free bodies quickly gained acceptance, and the firm's growth continued, resulting in its present expansion.

With its current work force of 30 employees, the company is a dealer for Timpfe trailers and parts, and manufacturers its own units for customers as far away as Texas and Georgia.

Breniser attributes the company's continued success to its loyal employees, and small size, which permits custom con-



Mr. and Mrs. Menno Eby Jr., left, receive keys to company's new facilities from Harold King, of Earl King, Inc., contractor.

struction and quick response to the specific trailering requirements of each customer.

Emphasizing their role as a designer of custom trailers, company personnel demonstrated the firm's first electric deck cattle trailer. Responding to a customer request, the firm equipped their all-aluminum, possum-belly trailer with a movable deck,

providing two-tier cattle transport, and converting in minutes to a single-floor configuration. Such a specialized unit can be constructed within 10 days to two weeks.

The day's events included presentation of the facility's keys to Menno Eby by Harold King of Earl King, Inc., the firm's contractor, followed by a luncheon and tour for the company's 30 guests.

IH reports convertible planter

CHICAGO, IL. — International Harvester has announced availability of the industry's first planter designed to convert quickly from 30-in. (762 mm) corn rows to high yield 15-in. (381 mm) widths for narrow-row soybeans.

The International Early Riser Corn/Soybean Special has eight fixed planting units on 30-in. (762 mm) spacings, with five additional units which drop into place for 15-in. (381 mm) soybean rows. Two skip rows for 60-in. (1.5 m) tractor tire spacings allow for cultivation or spraying without disturbing planted rows.

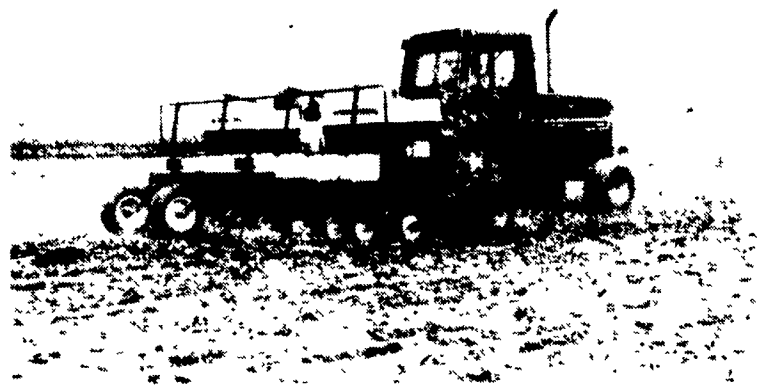
The 800 Series Early Riser planter is semi-mounted, with a rigid 7 x 7-in. (178 x 178 mm) steel frame toolbar equipped for Cat. II and III 3-point tractor hitches. An optional attachment allows for endwise transport.

IH says the switch from one configuration to another takes about 15 minutes. Drop-down planting units for soybeans are staggered for improved trash clearance in minimum- and no-till conditions. The five convertible units are raised and lowered with a movable hand winch, and lock in either the up or down position.

Stainless steel eight-row seed drums help make the conversion from corn to soybeans, and vice versa, fast and simple. Each drum delivers four rows when planting corn. For soybean planting, one drum delivers six rows, the other seven. Special 240-hole drums are available for precision planting of high population soybean varieties at speeds up to eight mph (12.8 km/h). Four seed drums, two for each crop, are standard.

The eight 30-in. (762 mm) corn row units are individually mounted, parallel linked. A special parallel linkage has been added for the five conversion rows. Seed openers are staggered 14-in. (356 mm) diameter double disks with precision bearings. The eight-in. (203 mm) covering disks are individually mounted. Press wheels are 6 5/8 x 12 in. (165 x 305 mm) standing rib, semi-pneumatic rubber tires.

Planting depth on the new IH planter is controlled by a gauge wheel system that equalizes row unit weight on both 4 5/8 x 16-in. (115



New planter from IH quickly converts from 30-inch corn rows to 15-inch soybean rows.

x 406 mm) grooved, semi-pneumatic rubber gauge wheel tires to minimize vertical movement of the row unit.

Folding row markers are raised and lowered hydraulically with an electronic automatic alternating

system. Standard Seed Flow II monitor warns of low seed level in each of the 15-bushel (.53 M³) hoppers and tells the operator when seed flow has been disrupted at any of the row units.

Scarlett adds warehouse

BALTIMORE, MD. — Scarlett Company, the Baltimore-based international seed distribution firm, recently announced the purchase of its newest storage and delivery facility, a modern 12,000 sq. ft. warehouse located in Mifflinburg.

According to Scarlett Company General Manager, Eugene Hohl, this acquisition will allow the company to expand its presence throughout the central and western Pennsylvania region as well as open new markets for Scarlett's complete line of farm seed, bird seed, and lawn and garden

products.

Built in 1982, the new Scarlett warehouse was previously owned by the Boyd Seed Center and will continue to be operated by three former employees. Raymond Galer, who has over 22 years of experience in the seed business, will be responsible for all warehouse and trucking operations. His wife, Doris, will serve as Office Manager at the Mifflinburg facility. Also joining Scarlett Company is their son, David, who has been appointed to the position of Regional Sales Representative.

Hamilton seminar Thursday

LANCASTER — Hamilton Bank's Third Annual Agriculture Seminar will be held on Thursday at the Lancaster Farm and Home Center.

Highlights of this year's seminar, which begins at 8:30 a.m., include an economic forecast by Lou Moore, of Penn State and an analysis of what's ahead in farm management practices by several

staff members of the Pennsylvania Farmers' Association.

Wilson D. McElhinny, chairman and chief executive officer of Hamilton Bank and president of Hamilton's parent company, Core-States Financial Corp., will convene the seminar. Closing remarks will be made by Hamilton's president, Laurence M. Strassner.