

# The efficient Profit-power system!



**TOP  
TPI**

USDA 1/84 RIP 3% Rpty 82% aAa 341526  
77 dtrs 62 herds 18 574m 3 6% 670f  
Protein +\$164 -02% +43P Rpty 71%  
Sire MILU BETTY IVANHOE CHIEF VG(87) GM



**TOP  
PROTEIN**

USDA 1/84 RIP 30% Rpty 60% aAa 213465  
63 dtrs 22 herds 20 875m 3 7% 773f  
Protein +\$95 +04% +23P Rpty 52%  
Sire WAYNE-SPRING FOND APOLLO GP(82) GM



**TOP  
TYPE**  
(photo reversed)

USDA 1/84 RIP 2% Rpty 86% aAa 651423  
107 dtrs 78 herds 17 342m 3 7% 637f  
Protein +\$72 -01% +14P Rpty 67%  
Sire PAWNEE FARM ARLINDA CHIEF EX(94) GM

**TOP COLOR  
WHEEL SALES  
AYRSHIRE**



USDA 1/84 RIP 34% Rpty 92%  
367 dtrs 134 herds 13 249m 3 9% 511f  
Protein +\$86 -07% +17P Rpty 81%  
Sire GALLANT MAN EX(90)

**BROWN SWISS**



USDA 1/84 RIP 14% Rpty 32%  
23 dtrs 4 herds 14 765m 4 0% 583f

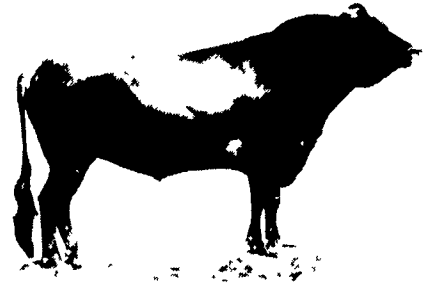
**6 Bulls Over +1000 PDM**

9H584 CHAIRMAN	+1502
9H625 STARFIRE	+1411
9H581 NEIL	+1339
9H628 SENSATION	+1101
9H608 HAMLET	+1079
9H107 JET STREAM	+1062

**Top Bulls for Dollar Value**

9H584 CHAIRMAN	+\$170
9H625 STARFIRE	+\$155
9H599 SPIRIT	+\$142
9H176 TRUMP	+\$123
9H589 STANDARD	+\$108
9H628 SENSATION	+\$107
9H626 SAUL	+\$105
9H587 LONE RANGER	+\$ 98
9H652 LOYAL	+\$ 95
9H107 JET STREAM	+\$ 94
9H801 RECKERS	+\$ 93
9H643 HAGER	+\$ 92
9H581 NEIL	+\$ 91
9H619 HELIOS	+\$ 90
9H794 IRA	+\$ 85

**JERSEY**



USDA 1/84 RIP 39% Rpty 46%  
23 dtrs 9 herds 14 281m 4 6% 654f  
Protein +\$133 +12% +22P Rpty 35%  
Sire YANKEE F W CHIEF



**Top Bulls for Test**

9H658 STARLITE	+ 17%
9H587 LONE RANGER	+ 15%
9H599 SPIRIT	+ 13%
9H576 SAXON	+ 12%
9H196 JEMINI	+ 10%
9H589 STANDARD	+ 09%
9H794 IRA	+ 08%
9H801 RECKERS	+ 04%
9H653 SPARKY	+ 04%
9H557 WISEMAN	+ 04%
9H176 TRUMP	+ 03%
9H622 STEWART	+ 01%
9H619 HELIOS	+ 00%
9H561 TERENCE	+ 00%

**Top Bulls for Protein**

9H794 IRA	+ 04%
9H176 TRUMP	+ 03%
9H619 HELIOS	+ 03%
9H589 STANDARD	+ 02%
9H107 JET STREAM	+ 02%
9H576 SAXON	+ 02%
9H608 HAMLET	+ 00%
9H622 STEWART	+ 00%
9H561 TERENCE	+ 00%

**Top Bulls Over +1.00 P.D. Type**

9H557 WISEMAN	+2 07
9H622 STEWART	+2 02
9H584 CHAIRMAN	+1 83
9H626 SAUL	+1 79
9H561 TERENCE	+1 67
9H794 IRA	+1 51
9H574 DINO	+1 48
9H589 STANDARD	+1 24
9H587 LONE RANGER	+1 10
9H581 NEIL	+1 08
9H599 SPIRIT	+1 03

**RETURN COUPON TO:**  
**SIRE POWER, INC.**  
 R D #2 Tunkhannock PA 18657  
 (717) 836-3168

**PLEASE SEND ME INFORMATION:**

I am interested in using Sire Power have a Sire Power representative contact me

Send me the 1984 Holstein Sire Directory

Send me the 1984 Dairy Sire Directory

NAME \_\_\_\_\_

ADDRESS \_\_\_\_\_

CITY \_\_\_\_\_

STATE \_\_\_\_\_ ZIP \_\_\_\_\_

PHONE \_\_\_\_\_