

REAL ESTATE

REAL ESTATE

**FOR SALE:**

199 A Limestone Farm on Marion Road, Franklin County Pennsylvania. Old stone house remodeled. Over 1 mile of Road frontage. Hagerstown soil. 3 floor Barn with pole shed attached, 3 hog barns. Lancaster silo. Located about 2 miles East of I-81 at Exit 4.  
Would consider sub-dividing the buildings with 10 to 20 acres.

**Robert F. Crider, Realtor**  
Chambersburg, Pa. 17201  
Phone: (717) 264-8528

**For Sale:  
New Listing**

20 acre farmette. Three bedroom brick home with several barns. Three car garage with workshop, pond, and many fruit trees. Ideal for mixed farming. Cocalico School District.

**For Sale:**

25 acre farmette, stone and long 2 story home, built in 1838. 40'x97' barn suitable for about 125 steers. Warwick School District.

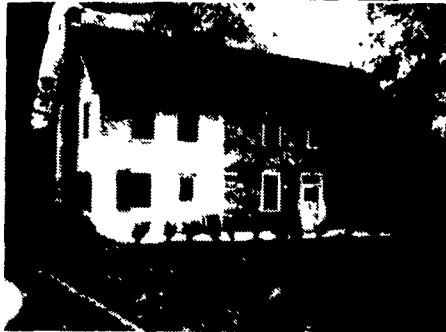
**ERA Hop Usner  
& Associates**  
814 Dawn Avenue  
Ephrata, PA 17522  
717-738-2005

**General Farm For Sale**

1/4 mile west of Freeburg, PA on Rt. 35 in Snyder Co. 140 acres total, 117 tillable. High, Productive limestone soil. Water supply: Well, Spring & 2 Streams. 1/2 mile road frontage on both sides of highway. Additional road frontage on 40 more acres. Buildings: 2 Dwellings, 130' oak bank barn, large machine storage poultry house and all other buildings in excellent condition. Owner financing available.

**Call 717-374-2111 between 9  
& 3 PM or 374-1784 evenings**

**COUNTRY PROPERTIES  
G.D. Hannum, Realtor**



"Tanemara Farm" - Colonial farm house on 132 acres includes tillable land, fenced pastures, stream and some woods 14 stall bank barn with tack room, wash stall for horses, large lot, etc Good working farm for \$410,000 Property may be sold in two parcels

Contact: Georgia Hannum 215-347-2065  
or Hale Truitt 215-347-2066  
215-869-9310

**HUNTING**  
area 40 acres open & wooded Small stream \$20,000 (D230)

**CAMP**  
& 7 acres in Hector Twp Electric & sewage \$15,000 (D269)

**TRAILER LOT**  
4 acres, all set up Small barn Potter County \$6,500 (D255)

**FARMETTE**  
65 acres, good house, large barn Sheep & beef hobby \$65 000 (D291)

ERA-Homestead Realty  
168 W Main St  
Westfield, PA 16950  
814/367-2222

**36 ACRES**  
3/4 tillable good access A fine homestead \$25 200 (M1573)

**2 5 ACRES**  
wooded site near State Game Land and Lakes Terms \$4 700 (M1583)

**2 AC RETREAT**  
very private, 3 bedrooms heavy insulation & 2 woodstoves for economical heat all appliances garage barn Reduced to \$48 900 (M1565)

**TRAILER COURT**  
store & home sewage disposal plant Call for details \$161 500 (M1564)

ERA-Homestead Realty,  
267 S Main St.  
Mansfield, PA 16933  
717/662-3287

**150 AC FARM**  
remodeled 3 bedroom farmhouse & 2 baths barn for beef/horses, an original log cabin is still on the site More land available \$128 500 Terms (W539)

**PRIVATE 24 AC**  
1/2 woods. \$14 400 (W778)

**25 AC. FARMETTE**  
3 bedroom farmhouse barn, 2 car garage ready to go \$55,000 (W775)

**CAMP**  
on 17.8 acres. 1/2 wooded \$17 500 (W770)

**COMMERCIAL BUILDING**  
in small town Ideal for small assembly etc \$26,000 (W768)

**5 AC SURROUND**  
this lovely remodeled home nestled in the pines Large garage/workshop, more land available \$55 900 (W762)

**108 ACRES**  
in a very rural setting Private & owner financing \$54,000 (W748)

ERA-Homestead Realty  
23 E Ave  
Wellsboro, PA 16901  
717/724-7161



RESIDENTIAL FARM SPECIALISTS COMMERCIAL



**JOHN H. REOHR**  
REAL ESTATE BROKER

**#20 - 101 acres Cattle and Heifer Operation. Excellent Area. Good 4-BR Home. Much to offer at \$140,000.**

**#31 - 65 acres - Cattle Barns. Exceptional 3-4 BR Home. A Retirement Gem \$92,500.**

110 Genesee St  
Suite - 28  
Auburn, NY 13021  
PHONES  
Office 315-253-3813  
Residence 315-252-1046

**MARYLAND  
EASTERN SHORE FARMS**

322 acre farm with over 240 highly productive acres. Convenient to Baltimore and Wilmington. Extensive road frontage just off hwy. 301. Two ponds and minimal improvements. **EXCLUSIVE.**

360 acre farm in Northern Kent County. Old Brick home with fireplace and paneling - needs restoration. Excellent hunting on pond. **EXCLUSIVE.**

Just Reduced Eastern Shore Produce Farm located near a major highway on Maryland's Eastern Shore. Includes excellent improvements and irrigation. Owner retiring, will finance. **EXCLUSIVE.**

**ERA-CHESTER RIVER REALTY**  
111 Court Street  
Chestertown, MD 21620  
(301) 778-4750

**We've Got The A, B, C's!**

Farm No. 1

- A = 235 acres of alfalfa soil
- B = Buildings of your dreams
- C = Cattle w/DHIA records that will blow the lid off your bulk tank

A family farm to fulfill a modern farmer's dreams Fantastic brand new showcase dairy facility ties 53, plus youngstock section with self feeder mow dryer 2" line Spotless milk house boasts built in generator & ultra milking system 1000 gallon tank 2 silos, 2 Patz cleaners Huge equipment building Great Colonial home All star 50% Reg Holstein dairy of over 90 head w/19 000 lbs av Super machinery line up All this situated on 235 acres 183 tilled finest alfalfa soil Grows and grinds grain here \$395 000 complete with all feed \$265 000 Bare Possible terms to super candidate

Farm No 2

- A = All kinds of acreage, approx 490, 1/2 tillable
- B = Buildings you won't believe — includes new split level ranch home & completely revamped barn
- C = A Cost you can't compare with

Great barn & ultra milk facility boasts new comfort ties that houses 70 w/2 line & 1500 gallon tank 20x70 silo 2 huge brand new machine sheds Huge fields pond and a special setting \$188 000

**Homestead Realty**  
Auriesville Road RD 1  
Fultonville NY 12072  
518 922 6301

**Potter County**

- 263 Acres - large home, outbuildings, can divide \$135,000
- 172 Acre Farm - home, 2 barns, 2 ponds \$100,000
- 77 Acres - house, barn, garage, borders S.G.L. - isolated \$79,000
- 24 Acres - paved road frontage \$10,500
- 4.5 Acres - mobile home, Oswayo Twp. \$16,900
- McKean County**
- 300 Acres - home, Oswayo Creek frontage \$83,000
- 4 Bedroom rancher, 8.4 acres, gas well \$60,000

**Contact**

Robert L. Watterson, R.E.S.  
R.D. 1 Box 1064  
Shinglehouse, Pa. 16748  
814-698-2300  
Local representative of

**THE FAIRMAN AGENCY, Realtors**  
210 Main Street, Watsontown, Pa. 17777  
Phone: 717-538-2582

**CENTRAL PENNSYLVANIA  
FARMS, FARMETTES, LAND  
& CABINS**

We presently have one of the largest selections of farms, farmettes, land and cabins available in central Pennsylvania. We have over 50 exclusive listings.

Our Farm and Land Department would be happy to mail a free, detailed farm and farmette list or land and cabin list to you.

**NEW LISTING**

**DAIRY FARM-** 295 acres (105 tillable, 35 pasture, 155 woodland), 2 houses, modern dairy facilities with 50 tie stalls, pipeline, 800 gallon bulk tank, 18'x70' and 14'x55' silos. Situated west of McVeytown, \$239,500.

See the February 4 and February 18 issues for a complete farm inventory.

**FARM AND LAND DEPARTMENT**

Fred Strauss (814) 364-1705 (Lewistown) Larry W. Platt (717) 568-5563  
Don Myers (814) 422-8111 (Bedford) Richard D. Reed (814) 839-4271  
Mel Reckey (814) 466-6688 (Huntingdon) Rachel Part (814) 668-4194



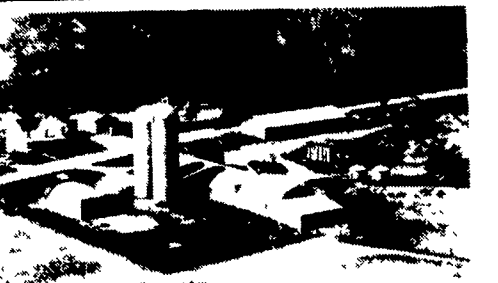
Frederick J. Kissinger, Realtor  
William H. Leonard, Realtor  
Ralph F. Brewer, Realtor  
245 S. Allen St.  
State College, PA 16801  
(814) 234-4000

Braodfording Rd ASSUMABLE LOAN Small farm with beautiful brick rancher on 35 acres Block and metal barn machine shed loafing barn all buildings under 12 years old only \$164 900

Kellen Drive GREAT VIEW OF THE MOUNTAINS - 3 Bedroom white split rock rancher with sunken living room family room with fireplace cathedral ceiling in dining & living rooms 2 full baths lots more only \$94 900

Rt 1 Box 109 Clear Spring DAIRY FARM Just in Time for Spring with Well Insulated 2 story 4 bedroom home 24' above ground pool 9 Farm Buildings Owner Financing 1st Mortgage Call Now only \$399 000

**Heyworth Realty**  
1300-B Dual Highway  
Hagerstown, MD 21740  
301-733-3701



**FOR SALE BY OWNER**

325 acre dairy farm, located in New York Southern tier, Steuben Co. 79 stanchion dairy barn, pipeline, 1500 gal. bulk tank. Two family dwelling, tenant house available County highway, near town.

For information call

**1-607-324-1375**

between 7-10 AM and 7-10 PM, or write Curt Ranger, R.D. #3, Hornell, N.Y.

One man's loss is another person's gain. This 300 acre farm must be sold! 200 acres limestone soil for corn and alfalfa. 50 cow barn with calf pens. Bulk tank, pipeline milker and gutter cleaner, 3 1/2 silos including "large Blue", other out buildings. Large metal building for 60-70 animals with feeding bunks. Duplex stone and wood home in excellent condition. Fair tenant house, house trailer. Reasonable taxes. \$225,000.00.

Tell us your needs. We have farms to fill your needs and pocket book.

**A.B. Smith RE**  
Chittenango, N.Y. 13037  
Tele (315) 687-3824  
Evenings