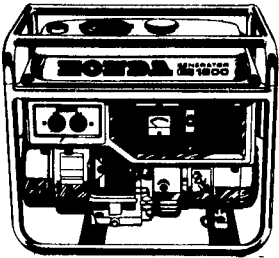


**PORTABLE HONDA****GENERATORS,  
WATER PUMPS  
and  
ENGINES**

Power When & Where You Need It  
600 - 6500 Watts  
With Battery Chargers

SAVE WITH OUR CASH DISCOUNT  
SALES, SERVICE & RENTALS  
at

**STOLTZFUS WOODWORK**

Rt. 897 North, Gap, PA 17527

(717) 442-8972

Open: 7 AM - 6 PM, Mon.-Sat.

**IT'S A  
HONDA**

We Ship  
Honda Parts  
P.P.

**CLIFFORD KUNES  
FARM MACHINERY  
DISPERSAL****SAT., FEBRUARY 18, 1984**

11:00 A.M.

Seneca Castle

(Ontario Co.) New York

Sale to be held at the farm on Seneca  
Castle Road, 1½ mi. north of Rte. 5-20  
and just south of Seneca Castle. 7 mi.  
east of Canandaigua or 4 mi. west of  
Geneva.

Discontinuing farming to dedicate full  
attention to his manufacturing concern  
(Castle Harvester), selling without  
reserve a full line of very well maintained  
machinery!

1979 Chevy. 70 series truck with Edbro 4LN  
hoist, 18 ft. rack, 10:00-20 rubber, 366 engine, 5  
sp. trans. with 2 sp. axle, 25,700 miles! White 2-  
105 diesel farm tractor, heated cab, 20.8-38  
rubber; J.D. 4320 diesel tractor; Oliver 770 gas  
tractor with 3 pt. hitch, wide front end; White  
549 5-18 spring reset plow; J.D. 210 14 ft.  
transport disk with herbicide nozzles; White  
378 3 pt. 4-row cultivator; I.H. 16 ft. folding  
transport harrow; 2 Lilliston 4-row rolling  
cultivators; Brillion 3 gang 15 ft. cultipacker;  
16 ft. drag; 3 pt. 200 gal. tank sprayer with 40 ft.  
boom; N.I. 12 ft. lime sower; Porterway  
spinach or greens harvester with pea cutting  
attachment, 18 ft. loading elevator, cut only 16  
acres since rebuilt!; J.D. 5-row tool bar  
spinach planter with John blue pump; 3 pt. 6 ft.  
spinach bedder used 1 season; Holland 2-row 3  
pt. planter; J.D. 4-row cabbage planter  
unit with liquid fert. applicator attachment and  
liquid insecticide applicator, John Blue pump;  
J.D. 184-186 tool bar type 4-row corn planter  
with insecticide boxes; Farmhand hydraulic  
bean dump box; pr. of 16.9 x 24 bean box  
flotation tires; running gear with wooden  
gravity box; 3 plank 16 ft. land float; Oliver 4-  
row cultivator; set of 20.8 x 38 bolt on axle  
duals; set of 18.4 x 34 snap on duals; pr. of 11.2 x  
38 tires and rims; single 11:00 x 40 tractor tire;  
n.f.e. for Oliver 66 tractor and other Oliver 770  
tractor; 1000 gal. steel water tank; Pr. of 60  
gal. fiberglass saddle tanks; 200 gal. plastic  
liquid fert. tank; 120 gal. plastic front mount  
fert. tank; hydraulic cylinders; no small  
items!

**IRRIGATION EQUIPMENT:** Gorham Rupp  
p to pump, 6 in. x 6 in., 1000 r.p.m., used just last  
season! App. 1500 ft. 4 in. alum. pipe; App. 1500  
ft. 5 in. alum. pipe; App. 750 ft. 6 in. alum. pipe;  
(All AMES A.B.C.) plus App. 750 ft. of 6 in. Shur  
Rain alum. pipe; 18 ft. dual purpose steel  
irrigation pipe trailer; 2 Rain Bird high riser  
guns; 30 Rain Bird sprinklers; 16 stations; An  
excellent auction! Prior inspection and  
inquiries are invited!

**TERMS:** Cash or good check day of auction!  
I.D. required! Nothing to be removed until  
settled for.

Lunch available!

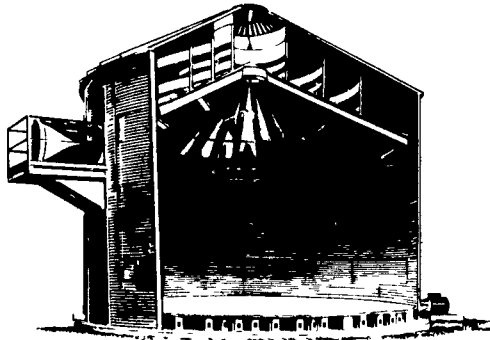
Owned by

**CLIFFORD KUNES, JR.**

716-526-5884 or

526-6238

Auction conducted by  
**PIRRUNG AUCTIONEERS, Inc.**  
WAYLAND, N.Y. 716-728-2520.

**Winter Discounts  
plus up to \$800  
Factory Rebates  
Now on**

U.S. Patents 3,479,748 and 3,501,845 Foreign Patents Pending

**STORMOR EZE DRY**

The EZE-DRY is the grain drying system  
thousands of farmers have used. For more  
than 15 years, farmers have found that the  
thin drying layer and high volume, low heat  
airflow lowers drying costs.

Drying capacities are available from 100 to  
1,000 bu./hr. at 10 pt. removal. And, it doubles  
as a storage bin after drying is completed.

**The Biggest Savings All Year**

With winter discounts and rebates, now's the  
best time to come in for a free, no obligation  
estimate.

**LOUCKS****GRAIN EQUIPMENT INC.**

RD #12 Box 307

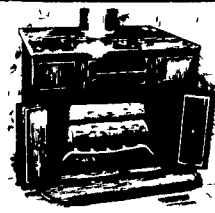
York, PA 17406

(717) 755-2868

Manufactured by Stormor Inc. Fremont, Nebraska

**Farm loan program improved**

WASHINGTON, D.C. the USDA's Farmers  
— A plan to streamline Home Administration



**Hydro Heater,  
Conestoga &  
Baker Stoves  
Or Fireplace  
Inserts**

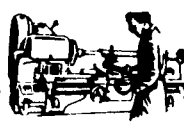
"Before You Buy...  
Give Us A Try"

**J&A STOVE SALES**

3753 East Newport Road, Gordonville, Pa. 17529  
ROUTE 772 ½ MILE EAST OF INTERCOURSE  
717-768-8913



**Machine Work  
Welding &  
Farm Supplies  
Hardware**

**CUSTOM BUILT WOOD &  
COAL FIRED BOILERS**

- Welders & cutting torches
- Custom made farm gates, etc.
- Custom built high pressure washers
- Stainless steel, aluminum and spot welding.
- UPS Service

**PLATE SHEARING AND  
PRESS BRAKE WORK****D.S. MACHINE SHOP****DAVID E. STOLTZFUS**

3816 E. Newport Road

Gordonville, PA 17529

1 Mile East of Intercourse on Rt. 772

**PUBLIC  
AUCTION**

Due to quitting our farming operation, we will sell our Holstein herd of dairy cattle and farm machinery at public  
auction located 4 miles east on Route 146 at I-57 Anna, Ill., exit or 10 miles west (Route 146) of Vienna, Ill., to road  
marker 27.30, thence south 1 mile (watch for sale markers, on

**FRIDAY, MARCH 2, 1984**

AT 10:30 A.M.

76 HEAD

**HOLSTEIN DAIRY CATTLE**

76 HEAD



42 head of Holstein cows, all being in production ex-  
cept maybe a couple at sale date. Majority of these cows  
were freshened from August to sale date and majority

are bred back artificially to Abs Dolan 4070 bull. Several  
of these cows are purebred or eligible for registration  
but we will not be selling papers of this group of cows.  
There are 16 first calf heifers at age 2, all in production,  
the balance 26 being 3 to 5 years of age. We will have  
production records available at sale on several of these  
cows. Also 14 head of Holstein heifers of breeding age.  
Bull has been running with these heifers for past 3  
months. Heifers to be pregnancy tested. 20 yearling &  
under heifers. Cattle will all be brucellosis tested and  
T.B. tested. Individual health papers available.

**MACHINERY & EQUIPMENT**

1962 John Deere Mod. 4010 diesel tractor with new  
paint, 15-5-38 rubber, dual hyd., and 3 pt. hitch; Bobcat  
mod. 600 skid steer loader with bucket & fork manure  
loader; 3 pt. hitch 8 tine Bush Hog chisel plow; J. D. mod.  
BW 14 ft. wheel disc; J. D. mod. 7000 plateless 4 row  
corn planter with no-till coulters; New Holland pto man-

ure spreader; 9 ft. J. D. mod. 1209 mower conditioner;  
J. D. mod. 640 hay rake; J. D. steel wheel rake; J. D.  
mod. 410 round baler; 6 ton bulk bin; homemade hay  
trailer; sprayer saddle tanks and pump; 3 pt. hitch bale  
fork; 3-50 lb. and 1-65 lb. weight jars; 4 compartment  
mix mill; 55 ft. slant floor bunk conveyor.

**TERMS:** CASH. No article to be removed until terms are complied with. Not responsible  
in case of accidents or theft.

**Mr. & Mrs. CURVIN HIGH**

SELLERS. Phone 618-833-8124

**KEITH'S COMPLETE AUCTION SERVICE**

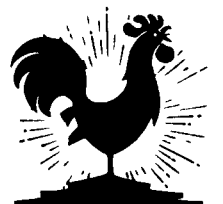
COL. KEITH REID, Auctioneer.

Phone 618-445-2233 Albion, Illinois.



Auctioneer's Note: A good herd of grade Holstein cattle. The High's and auction company be-  
lieve you'd be proud to have these cows on your farm. We will sell machinery first and then  
live into cattle. No small items so be on time as everything selling is listed. For information  
phone auction company or sellers. We welcome you to this auction and all our auctions.  
Light refreshments to be served. Plan to attend.

WILLIS PRINT FARMING, IL 61821



**SOMETHING TO  
CROW ABOUT...**

**LOW  
CLASSIFIED  
RATES  
WITH  
EXCELLENT  
RESULTS!**