

Chester Co. DHIA

(Continued from Page D22)

Lloyd Mast & Sons									
190	3	4 1	305	20 735	4 0	837			
53	3	8 8	295	18,487	4 1	764			
144	3	5 6	305	19,687	3 9	759			
212	3	3 7	305	17,839	4 2	752			
102	3	6 3	305	21,332	3 5	744			
126	3	7 1	305	16,939	4 2	715			
Mrs. John B. Hannum	3D								
210	3	7 11	305	24,259	3 4	826			
101	3	4 8	280	17,967	4 1	734			
246	3	4 5	273	15,855	4 5	708			
Herman Stoltzfus									
Gail 59	3	5 5	305	21,356	3 9	826			
Tom Halladay & Son									
Polly	3	4 8	305	18,886	4 4	824			
C. Edward Lawrie									
59	3	4 10	305	19,977	4 1	823			
William Fell									
52	3	6 3	305	13,666					
215	3	3 2	305	23,833	3 2	769			
Rothenberger Bros									
30	3	5 6	305	18,720	4 4	821			
172	3	5 7	305	18,865	3 9	735			
Donald L. Kauffman									
95	3	5 5	305	22,642	3 6	815			
Vernon Guest & Son									
Fredona	3	6 2	305	24,367	3 3	811			
GINNY	3	4 3	301	23,167	3 3	766			
Arthur D. Hershey									
Amy 22	3	4 3	305	24,299	3 3	811			
Lucky 23	3	4 5	305	21,147	3 4	720			
Samuel B. Acker									
500	3	7 4	305	19,375	4 2	811			
B114	3	3 11	305	20,150	3 7	749			
B63	3	5 6	305	19,113	3 8	731			
598	3	5 1	305	19,371	3 8	728			
626	3	4 6	285	16,625	4 2	704			
532	3	7 9	305	19,711	3 6	701			
Horace Prange									
Sophy	3	7 5	298	21,354	3 8	809			
Round Top Farm									
34	3	7 0	305	21,816	3 7	807			
68	3	10 6	305	23,833	3 1	750			
84	3	5 10	305	26,914	2 7	739			
185	3	4 0	305	22,392	3 2	717			
S. Wickersham & Sons									
202	3	8 3	305	19,239	4 2	803			

7449	3	9 6	305	17 961	4 4	790			
930	3	5 8	305	21 843	3 6	786			
Kuip Bros									
244	3	4 11	305	19 062	4 2	803			
Henry S. King									
Pearl	3	9 11	305	20 079	4 0	801			
Gottlieb Strohmaier									
Bonnie I	3	3 7	305	21 545	3 7	800			
94	3	4 5	305	20 128	3 9	789			
N66	3	4 4	305	21,348	3 4	727			
Harold J. Ranck									
Bess	3	6 1	305	18 511	4 3	800			
John P. Kauffman									
Percila	3	10 3	305	25,509	3 1	799			
Bethel	3	4 0	305	19 072	3 8	716			
J. Kenneth Landis									
Icicle	3	6 1	305	21,983	3 6	790			
Rocette	3	6 5	305	23,672	3 3	778			
Floyd Miller & Sons									
1	3	3 3	305	21,722	3 6	789			
43	3	6 8	281	19 752	3 7	726			
13	3	4 3	305	21 114	3 4	714			
Ben Beiler & T. Barlow									
Comet 69	3	4 10	305	15 543	5 1	786			
Willowland Farm									
Bridget	3	6 5	305	19 028	4 1	783			
Lottie	3	8 6	305	20,317	3 8	764			
Beverly	3	2 3	305	18 565	3 8	710			
Spring Aqua Farm									
197	3	6 5	305	21,845	3 6	781			
6	3	3 3	305	21,823	3 5	767			
Wilmer L. Hostetter									
Fancy 47	3	2 4	305	19 006	4 1	776			
Mt. Olivet Farm									
FB 33	3	8 6	305	23,000	3 3	769			
8	3	9 4	305	21,107	3 6	766			
Marsh Acres Farm									
335	3	5 9	305	21,015	3 7	768			
378	3	2 11	305	21,580	3 3	720			
David & Dawn Windle									
Connie	3	4 0	305	22 114	3 5	766			
Robin	3	4 5	305	19,129	3 8	727			
Chris & Ches Stoltzfus									
Kathy	3	5 3	305	23,912	3 2	766			
Quiet Valley Farm									
Lulu	3	8 11	305	18 504	4 1	765			
Wilkinson Farm #2									
653	3		298	19 644	3 9	762			
Abner R. King									
Shana	3	4 5	305	19 375	3 9	762			
Paul Smoker									
77	3	3 2	305	19 776	3 8	761			
Timbervue Farm									
Hopetul	3	5 5	305	17 875	4 3	761			

Crocket	3	5 8	305	18 840	4 0	757			
Walmoore 1									
372	3	3 5	305	19 320	3 9	757			
Milky Run Dairy Farm									
Rhoda	3	3 3	305	18 416	4 1	755			
Gideon Stoltzfus Jr									
Regina	3	6 4	305	19 460	3 9	754			
Blossom	3	4 8	305	17 857	4 0	718			
Lester Eby									
Diane	3	6 4	305	26 679	2 8	753			
A. Dudley & Son									
Dutch 38	3	5 2	305	18 676	4 0	746			
Anna Belle Zook									
36	3	5 8	305	21 999	3 4	743			
Donald H. Windle									
237	3	5 10	305	20,118	3 7	741			
Eugene Witwer									
Raven	3	10 0	305	21,597	3 4	740			
Calvin S. Kurtz									
23	3	6 0	305	20 649	3 6	740			
Sheeler Vernon Yost									
458	3	7 10	305	16,948	4 4	738			
Landis S. Reid									
17	3	3 1	296	18,830	3 9	732			
246	3	4 0	305	20 073	3 5	712			
Donald M. Horning									
101	3	3 2	305	18,628	3 9	728			
John L. Hicks & Sons									
607	3	3 2	305	17,930	4 1	728			
Milton & Joyce Edwards									
5	3	4 4	305	23,181	3 1	725			
E. Kent High									
64	3	6 4	305	19,169	3 8	725			
Richard Hoover									
14	3	2 1	304	17 975	4 0	724			
George Steele & Sons									
250	3	3 5	305	20,748	3 5	723			
Alta Vista Farm									
101	3	6 9	305	19,148	3 8	721			
Kenneth J. Roberts									
74	3	3 4	305	17,508	4 1	721			
Dale Hostetter									
Peg	3	8 8	305	22,105	3 3	720			
Tiny	3	7 5	305	23 694	3 0	704			
Cristal	3	5 6	305	18,486	3 8	704			
J. Elmer Lapp									
Martha	3	3 10	288	19 659	3 7	720			
Benjamin K. Kauffman									
Melody	3	10 5	305	17 812	4 0	715			
Charles J. Moore									
Diane	3	4 6	305	19 357	3 7	709			
E. Richard Hoopes									
175	3	9 5	305	19 054	3 7	709			
David L. Weaver									
89	3	3 3	305	19 183	3 7	708			
Glen H. Freese									
Beets 66	3	6 3	281	17 493	4 0	708			
Delphi Farms									
271	3	3 3	305	15 558	4 5	705			
David Bartram									
609	3	3 9	305	17 380	4 0	703			
Rose View Dairies									
W201	3	3 10	305	15 635	4 5	700			

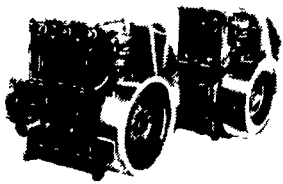
SMUCKER'S SALES & SERVICE, INC.

RD #2, BOX 21
NEW HOLLAND, PA 17557



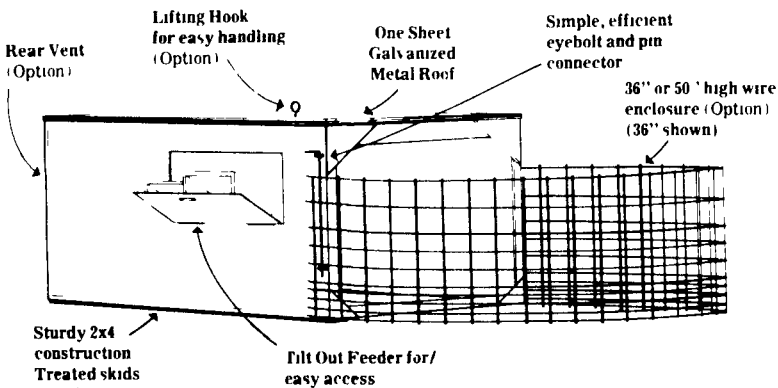
12-36 bhp

**TS2/TS3
AIR
COOLED
DIESELS**



**FOR PROMPT SERVICE CALL
717-354-4158 OR IF NO ANSWER
CALL 717-354-4374**

Compare the Stoltzfus Woodwork Calf Hutch



ALSO AVAILABLE: TRACK FOR FASTENING CALVES' CHAIN TO CEILING OF HUTCH

Maryland:
LEROY HILDEBRAN
Woodsboro, Md
301-845-8929

Berks County:
JOE RUTH
RD #4133 Fleetwood, Pa 19522
215-944-7571

Lebanon County:
UMBERGER'S MILL
Rt 322, RD#4 Lebanon, Pa
717-867 5161

Lancaster County:
JOHN L. LANDIS
1801 Colebrook Rd
Lancaster, Pa 17601
717-898-7689

MFD. BY: STOLTZFUS WOODWORK
RD 2, Box 2280, Gap, PA 17527
717-442-8972

Need...

**HAY - STRAW - EAR CORN
PEANUT HULLS**

Buy Now and Save!

More and more farmers are buying from us for better value and all around satisfaction.
DELIVERED — ANY QUANTITY
Phone Area Code 717-687-7631

ESBENSHADE TURKEY FARM
PARADISE, PA.

We Specialize In Aerial Work Using Our Twin Bucket Boom Truck

Extends To 55 Ft

ELECTRICAL CONTRACTING

Specializing In **AGRICULTURAL WIRING**

Also Residential Industrial And Commercial Work
Free Estimates

C. M. HIGH CO.
320 King St
Myerstown PA 17067
Phone 717 866 7544

We Have Poles In Stock 25