

ADA/DC annual meeting set for March

SYRACUSE — The 24th Annual Meeting of the American Dairy Association and Dairy Council will take place March 13-14 at the Hotel Syracuse in Syracuse, New York. All dairy producers in the F.O. 2 milk marketing area are urged to attend and take an active part in their milk promotion program.

This year's theme will be "Our Keys to the Future," outlining the current advertising and promotion programs being carried out by

ADA/DC. Producers will be shown the total 1984 marketing plans for milk and milk products.

The highlight of the program will be the presentation of the new advertising theme, "Milk's Got More." Producers will be able to view the new series of commercials and learn how the theme line was developed.

The advertising segment, along with ADA/DC's total program overview will take place during the

morning session on Tuesday, March 13. Following lunch, sessions will feature a comprehensive explanation of ADA/DC's new dairy case seminars.

For further information, call ADA/DC toll free at 1-800-ADA-MILK (in New York) or 1-800-HOT-MILK (in New Jersey and Pennsylvania).

Potato Institute slated

STATE COLLEGE — The 33rd annual Pennsylvania Potato Growers Institute will be held on Wednesday and Thursday, March 7 and 8, in cooperation with the Penn State College of Agriculture.

The two-day meeting will be held at Toftrees Country Club and Lodge, State College.

The Institute will get underway at 10 a.m. Wednesday morning

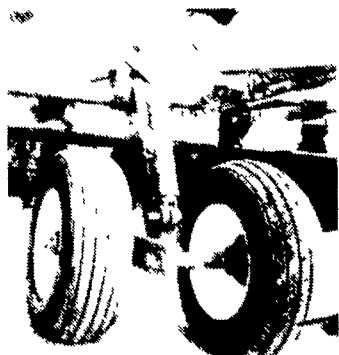
with the annual business meeting of the members of the Pa. Co-op Potato Growers under President Ferd Irish, followed by Vice-President Keith Masser with a presentation on the National Potato Promotion Board Referendum.

The entire afternoon session will be devoted to an indepth presentation and discussion on Potato Irrigation and its feasibility. This will be led by Karen Mancl, Water Specialist at Penn State.

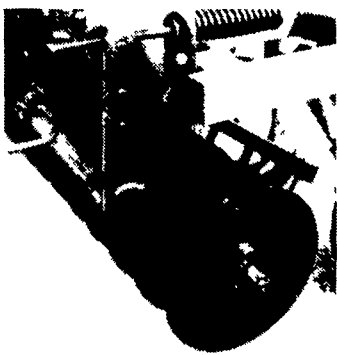
The Evening Banquet will start at 5:30 p.m. and conclude by 9 p.m., providing time to visit and talk with other growers.

Thursday Morning will begin with a presentation and discussion on the latest machinery developments from Lockwood and Dalhman Co. The Board of Directors and Members of the Potato Research Advisory Board will meet in the afternoon.

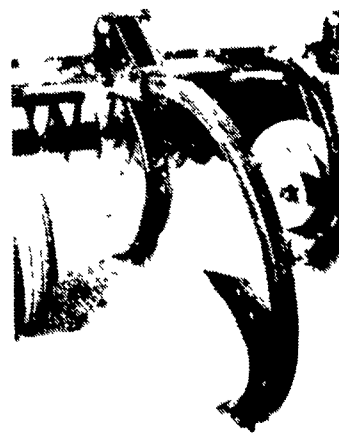
BUSH HOG[®] 1560 SOIL HOG[®] Coulter Chisel



Tandem axles are standard for all wing models—for precise depth control, greater flotation, trash clearance, and easier transport.



Operating depth of the coulter blades is controlled by a hand crank—a fast and simple one-man operation.



Rigid shanks are recommended for use in soils free of rocks and stumps. Shear pin protection is standard equipment. Shanks contact the soil at a reduced angle, requiring less HP and fuel.



Precise front-to-rear leveling is fast and easy with a simple turnbuckle adjustment on the tongue.

The Bush Hog 1560 Soil Hog Coulter Chisel gets into fields right after harvesting—cuts through compacted soil and residue, shatters plow sole to hold valuable winter moisture.

This rugged line of coulter chisels is designed for smooth, non-stop minimum tillage. Coulter scrapers are standard equipment to eliminate plugging problems. With either rigid or spring-cushioned shanks, you get 32" of trash clearance. The staggered shank arrangement provides a better soil mix, improves trash flow.

With 180° wing fold, narrow transport widths, and tandem axles, Bush Hog Coulter Chisels handle with ease during transport and are easy to store.

SPECIFICATIONS

Widths	6' 3" to 26' 3" (five rigid frame models, four wing models)
Coulter gang	20" diameter, 7 gauge blades, 1" gang bolt, 7" blade spacing, triple lip sealed ball bearings, trunnion mounted
No. coulters	11 to 43
Coulter scrapers	Standard equipment
Rigid shanks	1" x 2" w/ 32" clearance, shear bolt protection
Spring cushion shanks	1" x 2" w/ 32" clearance
Shank spacing	15"
No. shanks	11 to 21
Shank Points	1" wide helical type
Tongue	3" x 4" helix tubing, 36" long, with 1" x 1" hole for hitch hose holder and post stand. Tongue on models 16, 31 and larger, 3" x 4" tubing, 1" x 1" long
Frame construction	4" square, all-void, steel tubing
Depth control	1 1/2" ASAE hydraulic cylinder, hoses and depth stops
Wheels	6" bolt hole, duty hubs, 11L x 15.8 ply tire recommended
Minimum drawbar HP recommended	25 to 31
Approximate weight	5100 to 14,500 lbs. (dependent on model)

ALSO AVAILABLE

Tongue for pulling gear, hard surface, bank point, coulter blade, 7" diameter, 7 gauge



BUSH HOG[®]
ALLIED PRODUCTS CORPORATION

SEE YOUR LOCAL BUSH HOG DEALER

- BINKLEY & HURST BROS. INC.**
133 Rothsville Station Rd
Lititz, PA
717-626-4705
- CLAPPER FARM EQUIPMENT**
RD 1
Alexandria, PA 16611
814-669-4465
- THOMAS L. DUNLAP**
RD 1 Box 105
Jersey Shore, PA 17740
717-398-1391
- FARMERSVILLE EQUIPMENT, INC.**
RD 4
Ephrata, PA 17522
717-354-4271

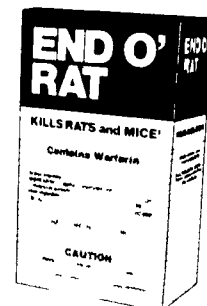
- GEORGE N. GROSS, INC.**
5261 Davidsburg Rd.
Dover, PA 17315
717-292-1673
- A. L. HERR & BROS.**
312 Park Ave.
Quarryville, PA 17566
717-786-3521
- KELLER'S FARM MACHINERY, INC.**
116 Richlandtown Pike
Quakertown, PA
215-536-4046
- LEHIGH AG EQUIPMENT**
RD #2
Wescosville, PA
215-398-2553

- MILLER SALES & SERVICE INC.**
Stewartstown, PA 17363
717-993-2470
- NEUHAUS'ES INC.**
RD2
York, PA 17403
717-428-1954
- PEOPLES SALES & SERVICE**
Oakland Mills, PA
717-463-2735
- PETERMAN FARM EQUIPMENT, INC.**
225 York Rd
Carlisle, PA 17013
717-249-5338

- STANLEY'S FARM SERVICE**
RD Box 46
Klingerstown, PA
717-648-2088
- STOLTZFUS FARM SERVICE**
Cochranville, PA 19330
215-593-2407
- UMBERGERS MILL**
RD 4 Box 132
Lebanon, PA 17042
717-867-5161

Kills rats and mice!

End O' Rat works fast to kill unwanted rats and mice. Completely safe for use around the home farm or factory buildings, End O' Rat is specifically formulated to appeal to the natural feeding habits of rats and mice. And End O' Rat contains Warfarin—for proven effectiveness. Put End O' Rat to work for you today!



END O' RAT

Distributed by

New Holland Supply Co.
New Holland, PA
717-354-2340

Caldwell Supply Co.
West Trenton, NJ
609-882-2223

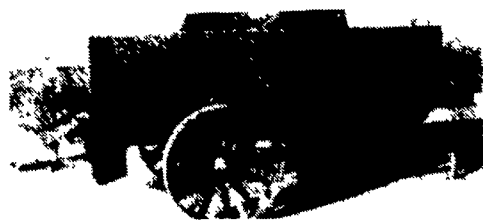
CONTACT US

For **MANURE HANDLING EQUIPMENT**

Semi- and Liquid Spreaders - Ground Driven - Easy Running Priced Reasonably

PIT ELEVATORS

ALLIS CHALMERS AND WISCONSIN POWER UNITS COMPACT ROTO BEATERS



HAND-O-MATIC BUNK FEEDERS NOW IN STOCK FOR EASY SILAGE DISTRIBUTION

PLATE SHEARING & PRESS BRAKE WORK

COMBINATION MOWER & CRIMPER UNITS

SMUCKER WELDING & MANUFACTURING

2110 Rockvale Road
Lanc., PA 17602
PH: (717) 687-9198