



Virginia Auction Summary

January 28-Feb. 1
Report supplied by VDA
Total of Va. Weekly Feeder
Cattle Auction Receipts: 4,248.
TREND: steady to \$5 higher.
Southwestern, Va.
Auction Summary
January 28-Feb. 1

STEERS: 300-500 lbs. Medium 1
65.00-77.00; Large 1 60.25-72.00;
Small 1 55.00-67.00. 500-700 lbs.
Medium 1 57.00-68.00; Large 1
59.00-68.50; Small 1 53.75-63.00. 700-
1000 lbs. Medium 1 53.25-64.00;
Large 1 57.25-64.50.

HEIFERS: 300-500 lbs. Medium
1 48.00-57.50; Large 1 48.00-58.50;
Small 1 44.00-55.50. 500-700 lbs.
Medium 1 47.00-55.50; Large 1
47.00-55.00; Small 1 41.00-53.50; 700-
900 lbs. Medium 1 43.00-53.25;
Large 1 55.00.

Northern Va.
Auction Summary
January 28-Feb. 1

STEERS: 300-500 lbs. Medium 1
61.50-70.00; Large 1 65.00-71.00;
Small 1 54.00-65.00. 500-700 lbs.
Medium 1 56.50-69.00; Large 1
60.50-68.75; Small 1 53.00-62.50. 700-
1000 lbs. Medium 1 55.50-62.50;
Large 1 58.00-61.75; Small 1 56.00-
58.50.

HEIFERS: 300-500 lbs. Medium
1 45.50-56.00; Large 1 48.50-58.50;
Small 1 44.25-56.00. 500-700 lbs.
Medium 1 44.00-54.00; Large 1
49.75-58.00; Small 1 46.00-46.25. 700-
900 lbs. Medium 1 46.00-52.50;
Large 1 48.50-52.50.

ATTENTION YORK CO. FARMERS

Looking!!! For Quality
Hogs

Every Monday
HATFIELD PACKING CO.
BUYING STATION AT
SECHRIST SALES CO.
LIVESTOCK AUCTION
R.D. 1 Stewartstown, PA

..Top Select Price on #1 & 2 Hogs 215 -
245 lbs.

.. We will receive your hogs from 6 A.M.
until ???

.. Your hogs will be weighed & paid for
immediately

.. There will not be a commission or yard-
age fee

.. You may call our office Monday morning
for base price

.. Please give us a chance to market your
hogs

FOR INFORMATION CALL
717-993-6130

EMERY'S BUYING STATION

OPEN TO RECEIVE YOUR MARKET HOGS

AT THE GREEN DRAGON MARKET
RD 4, EPHRATA, PA 17522
1 MILE NORTH OF EPHRATA
ON NORTH STATE STREET.

HOURS
MONDAY, TUESDAY, and
WEDNESDAY
6:00 A.M. to 11:30 A.M.

215-458-5677 Residence
717-733-9648 Office

YOU ARE PAID FOR YOUR
HOGS IMMEDIATELY

Ken & Lois Emery, Proprietors

Livestock market and auction news

Southeast Va.
Auction Summary
January 28-Feb. 1

STEERS: 300-500 lbs. Medium 1
55.00-61.50. 500-700 lbs. Medium
58.00-60.50; Large 1 60.50-61.50. 700-
1000 lbs. 58.50-59.50

HEIFERS: 300-500 lbs. Medium
1 46.00-55.00; Large 1 49.50-54.50.
500-700 lbs. Medium 1 47.50-53.00;
Large 1 50.50-53.50. 700-900 lbs.
Medium 1 47.50-51.50.

Shenandoah Valley Livestock

Harrisonburg, Va.

Saturday, January 28

Report supplied by auction

FEEDER CATTLE: Steers:
M&L-1 300-500 lbs. 60.50-70.00; S-
1&M&L-2 300-500 lbs. 57.00-65.00;
M&L-1 500-700 lbs. 56.50-61.50; S-
1&M&L-2 500-700 lbs. 56.00-69.50.
M&L-1 700-1000 lbs. 59.00; S-
1&M&L-2 700-1000 lbs. 51.00-58.00;
M&L-1 Holstein 300-1000 34.75-
44.50. Feeder Bulls: M&L-1 300-500
lbs. 57.00-70.00; S-1&M&L-2 300-500
lbs. 57.50-62.00; Heifers: M&L-1
300-500 lbs. 47.00-53.00; S-1&M&L-2
300-500 lbs. 45.00-50.50; M&L-1 500-
700 lbs. 49.50-58.00; S-1&M&L-2 500-
700 lbs. 45.00-48.00; M&L-1 700-800
lbs. 45.00-52.50.

STOCK COWS: Beef-410.00;
Dairy-410.00; Baby Calves-20.00-
82.50.

SLAUGHTER COWS Trend:

Utility & Commercial 2-4 33.00-
40.50. Canner & Cutters 1-3 23.00-
32.00.

SLAUGHTER BULLS 1 & 2 44.00-
48.50.

LAMBS Trend: High Choice &
Prime 59.50; Choice 56.00; Feeder
Lambs Choice 57.00-57.50;
Slaughter Ewes 12.00-22.50; Head
Ewes 56.00.

HOGS: US 1-3 200-240 lbs. 49.70;
Sows 1-3 37.00-49.00; Boars 33.50.

VEAL: Choice & Prime 64.00-
84.00.

SLAUGHTER CALVES: Good &
Choice 49.00-55.00.

Four States Livestock

Hagerstown, Md.

Wednesday, January 25

Report supplied by auction

SLAUGHTER: Fed Steers-
Mostly Steady to 2.00 higher; Good
58.00-62.75; Medium 52.00-57.00.
Heifers - Choice 60.00-63.75; Good
55.00-59.00; Medium 54.00 down.
Cows - Large Run 1.00 higher;
High Yield - few 44.05-48.25, 41.00-
43.00; Average 37.00-40.00; Big
Middle 33.00-36.00; Fatty Herf.
32.00-35.00; Shelly 34.00 down. Fat
Bulls - 2.00 higher; Good 50.00-
54.75; Medium 46.00-49.00. Veal
Calves - No Choice offered - Mostly
steady Prices. Good 75.00-84.00;
Medium 65.00-74.00; Farm Herf to
61.00; Farm Bulls 86.00-101.00;

Light & Weak 42.00 down. Lambs -
Steady. Good 57.00-59.50; Medium
52.00-56.00.

STOCKER: Steers 300-550 lbs.-
Good Run 2.00 higher; Choice
61.00-66.00; Good 56.00-60.00;
Medium 51.00-55.00; Culls 50.00
down. Steers - 600-850 lbs. Choice
58.00-62.00; Good 53.00-57.00;
Medium 52.00 down. Heifers - All
Weights. Choice 51.00-57.00; Good
45.00-50.00; Medium 44.00 down.
Bulls - Choice 53.00-57.50; Good
48.00-52.00; Medium 47.00 down.
Dairy Cows - to 585.00. Springing
Heifers - to 585.00. Pigs Hd. - 20-30
lbs. 10.00-22.00; 40-60 lbs. 23.00-
33.00. Shats by lb. 33.00-47.00.
Slaughter Hogs - Good Run 1.00
higher. 220-230 lb. 50.50-50.85; 240-
260 lbs. 50.25-50.75; 200-215 lbs.
48.25-50.00. Sows - 350-700 lbs. 43.00-
49.25; Thin Sows 38.00-42.00.

Westminster Livestock Auction

Westminster, Md.

Tuesday, January 24

Report supplied by auction

BUTCHER COWS: Fully 1.50
higher! High Yield 42.50-44.50;
Standard & Utility 38.00-42.00;
Canners 34.00-38.00; Shelly 33.00
Down. Slaughter Bulls- Few
medium to 47.00. Fed Steers-
Choice 58.75; Good 57.00-60.00;
Standard 47.00-53.00. Fed Heifers-
Low Choice 56.00-58.00.

BUTCHER HOGS: Light run. US
#1 & 3 215-240 lb. few to 50.50. Sows-
Over 500 lb. to 45.00.

VEAL CALVES: \$2.00 to 3.00
higher! Good Few to 66.00; Stocky
& thin 35.00-45.00. Killers 80-100 lbs.
45.00-55.00; Weak & Rough 30.00
Down.

CALVES RETURNED TO

FARM: \$5.00 lower. Holstein
BULLS- 100-120 lb. 70.00-100.00; 90-
100 lb. 55.00-70.00.

LAMBS: Yearlings 130-150 lb.
20.00-46.00.

STOCK CATTLE: Light Run.
Steers- Med. to Good 675-750 lbs.
48.00-57.00; 815-1025 lbs. 47.00-54.00.
Holsteins 450-700 lb. 39.50 to 41.50.
Bulls- Medium to Good 230-400 lb.
51.00-57.00.

PIGS AND SHOATS: Light Run.
By the head- 25-50 lbs. 15.00-22.00.
By the lb.- One Stock Boar 305 lb. at
33.00.

Joilet Livestock

Thursday, February 2

Report supplied by USDA

Friday through Wednesday's
salable receipts 2300; 5 days last
week 2,021; year ago 2709. Trading
slow to moderate for the week.
Slaughter Steers closed the week
weak to 1.50 lower, mostly .50-1.50
lower compared with Wednesday
of last week. Slaughter Heifers
ended the week mostly .50, in-
stances 1.00 lower. Cows closed the
week steady to firm.

SLAUGHTER STEERS: Choice
few Prime 3-4 1200-1375 lbs. 70.50-
71.50 Monday; 70.00-71.00 Wed-
nesday. Choice 2-4 1050-1400 lbs.
67.50-70.50 Monday; 66.50-70.00,
mostly 67.50-69.00 Wednesday.
Mixed Good and Choice 2-3 1000-
1300 lbs. 66.00-67.50.

SLAUGHTER HEIFERS:
Choice 2-4 900-1200 lbs. 67.00-68.25,
load and package Monday 69.00.
Mixed Good and Choice 2-3 900-1050
lbs. 64.00-65.50.*

COWS: Cutter and Boning Utility
1-2 38.00-39.00. Canner and Low
Cutter 1-2 34.00-38.00. Shelly
Canner 1-2 28.00-34.00.

* Corrected Copy

LOUIS LYONS & SON

Consign your cattle and hogs, feeder pigs
& calves to Louis Lyons & Son. They offer
choice service, excellent sorting &
marketing of your livestock.

Charles Diller, Manager

Phone 394-7915

Burnell Siegrist - Buyer & Seller

Phone 626-8653

Experienced
Personnel

Immediate
Weighing

VINTAGE SALES STABLES, INC.

AUCTIONS

Starting

THURSDAY, NOV. 3, 1983

Every Thursday at 1 P.M.

HAY, STRAW & GRAIN

Sold on Commission

10 miles east of Lancaster, 8 miles west
of Coatesville on Rt. 30, Paradise, PA.

L. Robert Frame, Manager

For information

717-442-4181

215-458-8518

Kills rats and mice!

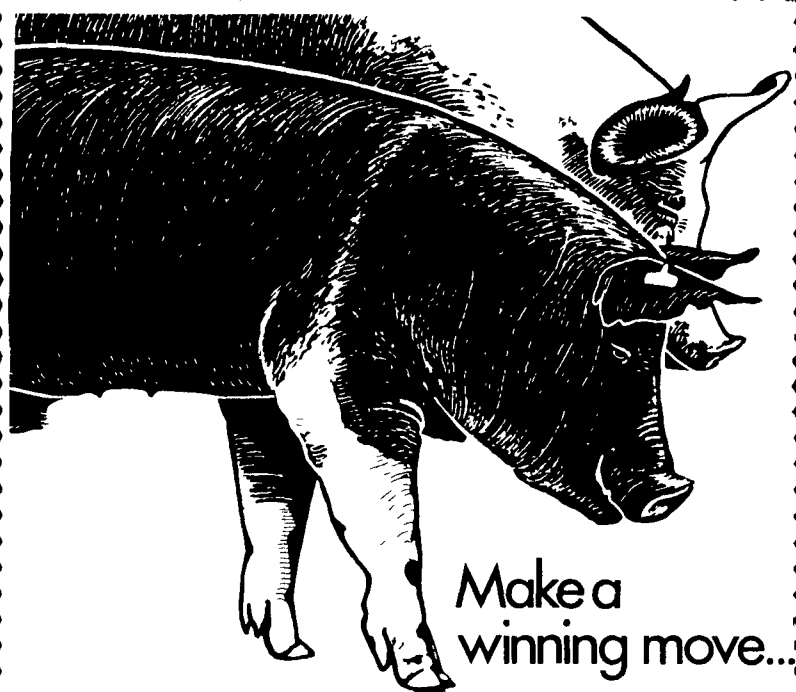
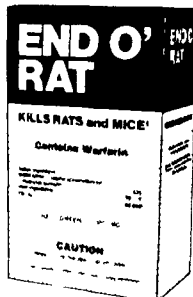
End O' Rat works fast to kill unwanted rats and
mice. Completely safe for use around the home
farm or factory buildings. End O' Rat is specifically
formulated to appeal to the natural feeding habits
of rats and mice. And End O' Rat contains Warfarin—
for proven effectiveness. Put End O' Rat to work
for you today!

END O' RAT

Distributed by

New Holland
Supply Co.
New Holland, PA
717-354-2340

Caldwell
Supply Co.
West Trenton, NJ
609-882-2223



Make a
winning move...

Kleen Leen

Play to win with our complete Checker Mates Hog Breeding
Program. It's the result of many years of genetic research.

It can pay off in bigger, healthier litters in the farrowing house
thanks to the maternal heterosis of Checker Gilts. Plus, the
money saving performance punch contributed by Checker Boars
when your pigs reach the finishing house.

But it's more than boars and gilts. It's a complete breeding
program aimed at making you a winner.
Stop in and ask us about it today.

K & K FEED, INC.

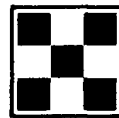
PHONE 717 866 2324
23 N PARK ST RICHLAND PA 17087

WEST WILLOW
FARMERS ASSN., INC.

PHONE 717 464 3386
WEST WILLOW PA 17583

WOODSTOWN ICE & COAL CO.

PHONE 609 769-0069
WOODSTOWN N J 08098



Purina Dealer

HESS MILLS

PHONE 717 442 4183
717 768 3301
PARADISE, PA 17562

KEYSTONE MILLS

John B. Kurtz
PHONE 717 354-4616 717 738 1088
RD3, EPHRATA PA 17522