

# Cow increase

(Continued from Page A1)

Penns Valley Livestock auction in Centre Hall. A total of 160 dairy cattle, culled for the dairy bill, were sold this week, Scott Yocum said. Last week, one-third of the cattle sold were cull cows, he added.

"For the next 30 to 45 days, there will be a surplus of cattle at local markets," Yocum said.

How will this affect cattle prices?

"An over-run of cattle will generally push the price down," Zimmerman said, but added that the weekly price trend itself has been down recently.

The increase in dairy cow numbers will affect beef prices also, Yocum said. "A load of Hereford cattle came in this week, and the farmer received less money than usual," he said. "He could have run two or three cents more for beef if the dairy weren't there."

Both Zimmerman and Yocum agreed that dairy cow numbers need to be stretched out over the next few weeks to keep the market

stable. Sending two or three cows per load, instead of eight or ten, would help, they said.

"Farmers are bringing anywhere from six, seven or 10 dairy cows per load," Yocum said. "It would be better if they sent groups of two's or three's. It wouldn't flood the market as much."

The average cattle prices for January 1984 are lower than those a year ago, Zimmerman said. Average prices now are: utility and commercial, 37 to 41-1/2 cents per pound; cutter and utility, 35 to 39 cents; and canner and low cutter, 30 to 34-3/4 cents.

For January 1983, the prices were: utility and commercial, 41 cents per pound; cutter and utility, 38 cents; and canner and low cutter, 34 cents.

The overall effect of the dairy compromise bill on beef prices will not be easily determined, Zimmerman said. Cows are sent to market for varying reasons, he pointed out; however, a statewide auction program will be initiated Wednesday to check the number of cows culled for dairy bill sign-up.

Penns Valley Livestock has already begun a marking system. Yocum said he plans to mark cows culled for the dairy bill before they enter the sale ring. This way, the cows will be sent to slaughter and not resold to other dairymen.

Yocum said he believes the dairy bill program will have an adverse effect on cattleman. "The program will hurt beef producers and the neighboring farmer who wants to

cull cows for herd reasons and not for the dairy bill," he said.


Zimmerman speculated that the real impact on the beef industry will be determined by the number of dairy cows sent to slaughter.

"The effect on the beef industry depends on how many cows really end up being slaughtered because of the dairy program," he said. "A 10 percent increase or more in the number of cows will have an effect on beef."

## ZIMMERMAN

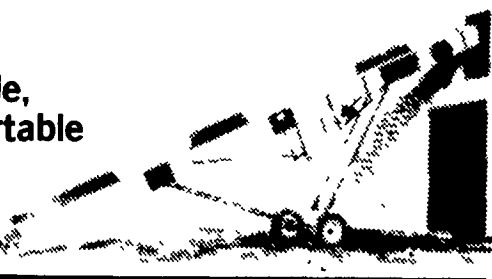
**MANUFACTURING CORP.**

**HOLLANDER RD, RD3  
NEW HOLLAND, PA  
17557  
717-354-9611**



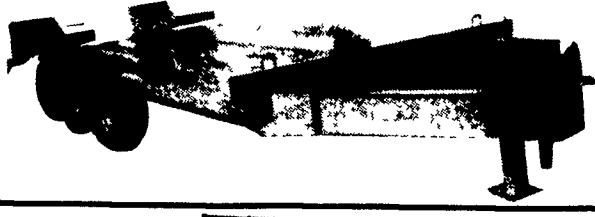
**A**

**Versatile,  
Economical Portable  
Elevator for  
Bales and  
Ear Corn**



**AIR-O-MATIC  
VENTILATION SYSTEMS**

---

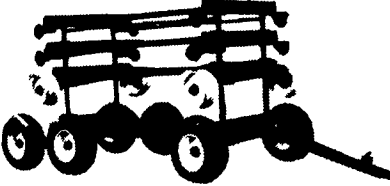


**UTILITY TRAILERS**

Gross Cap.  
3,000 to  
24,000 lbs.

Variety  
of Sizes  
Made to Order


---




**Rugged, Heavy Duty  
WAGON GEAR**

**ZIMMERMAN AUGER SYSTEMS**  
**FOR EMPTYING MANURE PITS**

Efficient Economical and requires less Horsepower than most systems



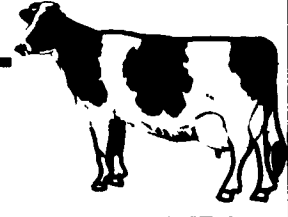
Portable



Stationary

**CALL FOR PRICES AND YOUR LOCAL DEALER**

## SPECIAL DAIRY COW CONSIGNMENTS



TO  
**NEW HOLLAND SALE STABLES INC.**  
New Holland, Penna.

**WED., FEBRUARY 8, 1984**

**32 HEAD TOP PUREBRED & GRADE  
Canadian Cows, Fresh & Springers**

- \* 1 Reg. 4 year old Gay Deal Fury due Feb. 20th to Elevation Larlin.
- \* 1 Reg. 4 year old Star Master daughter bred to Matodra due Feb. 18 with a 4.0%.
- \* 1 Reg. 4 year old Wholesome Pursues Leader due Feb.
- \* 1 Reg. 4 year old Missouri Fury bred to Matodra due Feb. 20.

Consignments by Leroy Smucker

Also

- \* 1 load fres and springing cows consigned by Merle Breneman.
- \* 1 load fresh cows consigned by Alfred Albright.
- \* 1 load fresh and springing cows consigned by Marvin Eshelman.
- \* 1 load fresh cows consigned by Norman Kolb.
- \* 1 load fresh and springing cows consigned by Raymond Smucker.

— Abe Diffenbach, Manager —  
— 717-354-4341 —

## PUBLIC AUCTION

OF  
**TRACTORS - COMBINE - FARM  
EQUIPMENT - ANTIQUE CARS**

Location: Going south on US 13 turn right at Blackbird, Del. onto Road 471 go thru 3rd crossroads, 3rd drive on left. Also going from Clayton, Del. to Massey, Md. on road 40 turn left at second crossroads 3rd drive on left.

**THURSDAY, FEB. 16, 1984**

11 A.M.

**TRACTORS & COMBINE**

2470 Case 4/w drive diesel tractor (1975), w/cab  
1210 Case diesel tractor (1977)  
930 Corn Rowcrop Comfort King diesel tractor (1967)  
New Holland T R 85 combine with rear drive  
15' grain head - floating bar  
#962 corn head 6/30 n/r

**FARM EQUIPMENT**

Case on land 7x18" plow with buster bar, Oliver 5x16" Oliver plow with buster bar, 21' JD 210 disc with buster bar, 23' Brillion folding crowfoot packer, 17' Brillion crowfoot packer, 7000 JD notill planter 6/30 n/r with high & low speed augers - seed monitor & insecticide boxes, 14' Case pull type chisel plow, 12' JD 3ph chisel plow, 12' Case field cultivator, JD #400, rotary hoe, Case V-12 stalk chopper, John Blue 400 gal. sprayer with 30' boom, 17' JD drag, 5' Woods ditch bank mower, JD 18 tyne grain drill (model B, 3 funnel body wagons, 55' Smoker 6" auger elevator, 6' offset disc, Ferguson ditcher with transport wheels, 13' speed plow snow blade with frame for 2470 tractor, Big V blade snow plow, 10 ton 3 axle Kruger trailer, Donahoe implement 30' trailer, 5 bottom crowfoot packer, Case tractor cab, 16' Wick boom

**MISC.**

5 tractor cylinders, Ewing portable steam cleaner, quick hitch, electric seeder, air grease gun, tool for sickle knives, tractor & truck tires, radios, barn scales, grain moisture fan, agitator pump, large transfer pump, front axle for 4/w drive army truck, burlap bags, paper bags, red jacket water pump, gas bird gun, goose decoys, misc.

**TRUCKS**

1969 Int 1700 Loadstar grain truck with 16' grain body & lift tailgate  
1967 Int 1600 Loadstar with 18' grain body  
1963 Chevy 60 with 16' grain body  
1960 Int with 14' dump grain body  
1950 Ford 10 wheeler with 15' dump body  
1959 Landrover jeep 4/w drive.

**ANTIQUÉ CARS**

1930 Ford Roaster completely reconditioned (like new)  
1930 Ford Town Sedan (partially restored)  
1929 Ford chassis & motor  
Also some misc. parts  
1975 LTD Ford station wagon (68308 miles)

TERMS: Cash or Approved Check

Owners

**RAY W. & SIS THOMPSON**

Sales Mgr & Auctioneers  
C.T. Scuse & Sons  
302-653-7530

Lunch



## Winter Special On SEEDER / SPREADERS

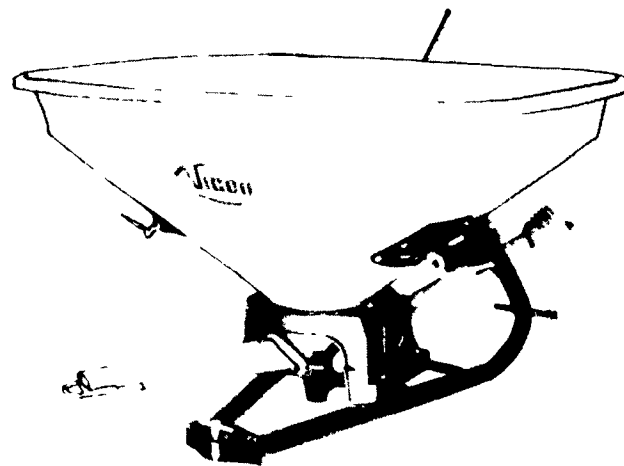


*the New Dimension  
in seeding/spreading*

Over the past two decades Vicon pendulum action seeders/spreaders have become an integral part of the farming scene. Now Vicon Vari spreaders are entering a New Dimension - a completely new range of spreaders featuring a characteristic new design and incorporating the latest technology to give the accuracy and reliability demanded by today's profit conscious farmer. Pendulum action gives the advantage of accuracy on sloping ground as well as on the flat coupled with the ability to spread all types of solid fertilizer, chemicals, seeds, powders and lime.

The six models in the new range offer capacities to suit the needs of every farm size. A special feature of the New Dimension spreaders is an easily adjustable flywheel which changes the effective spreading widths from 20-45 feet.

*a sound investment  
for profitability*



**RED WING  
FARMS**

RD 1378, Fleetwood, PA

**PHONE  
215-944-0402**

**CALL**

FOR SPECIAL PRICES ON ALL  
VICON EQUIPMENT  
MOWERS, MOWER CONDITIONERS,  
RAKES, TETTER RAKES, AND  
POWER HARROWS



**TRIPLE H  
EQUIPMENT**

Peach Bottom, PA

**717-548-3775  
717-548-2094**