

## Pa. reports fruit yields

**HARRISBURG** — Pennsylvania's 1983 grape production at 62,500 tons was a record high and was up 33 percent from 1982, according to the Pennsylvania Crop and Livestock Reporting Service. The previous state record was set in 1981 at 61,000 tons. The value of utilized production totaled \$10.6 million, up almost one percent from 1982.

Tart cherry production totaled 8.5 million pounds in 1983, up 55 percent from the 1982 crop. Utilized production was valued at \$4 million compared with \$1.1 million the previous year. Production of sweet cherries in Pennsylvania during 1983 was 800,000 pounds, up 33 percent from 1982. The value of utilized production was \$1.1 million, up 38 percent from the previous year.

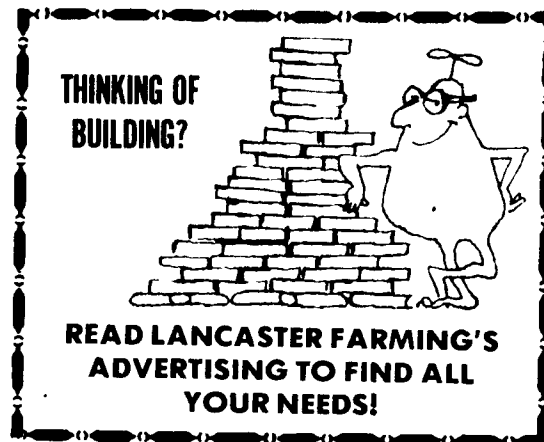
Commercial apple production in the state totaled 440 million pounds, down 16 percent from the previous year's crop. The value of utilized production totaled \$38.5 million, down 21 percent from 1982. There was a 41 percent decrease in pear production in 1983, to 2,700 tons. The crop was valued at \$770,000, down 46 percent from 1982.

Peach production in 1983 totaled 94 million pounds, up four percent from the previous year. The value of utilized production totaled \$38.5 million, down 21 percent from 1982.

Total United States utilized production of leading non-citrus fruit crops, excluding avocados, totaled 13.1 million tons in 1983, six percent less than a year earlier, but three percent more than in 1981.

Commercial apple production totaled 8.2 billion pounds in 1983, one percent above the previous year's crop and six percent more than the 1981 crop. Production of sweet cherries totaled 180,000 tons in 1983, a 15 percent increase from the 1982 total. Tart cherry production totaled 155 million pounds in 1983, half the 1982 crop. Production of grapes during 1983 was 5.28 million tons, down 19 percent from the record high production set in 1982, but 18 percent higher than 1981. Peach production in 1983 totaled 1.79 billion pounds, of which 1.75 billion pounds were utilized. This was 17 percent below the previous year's utilized total and 34 percent less than 1981.

There was a four percent decrease in pear production in 1983 to 774,000 tons.



# Two Great Alfalfas

**526**

Yields, winter-hardiness and Bacterial Wilt tolerance are excellent.

**531**

High tolerance to anthracnose. Very fast recovery after harvest.

Ask your Pioneer salesman about the alfalfa variety that's right for your farm.



**PIONEER**  
BRAND-ALFALFA SEED

PIONEER HI-BRED INTERNATIONAL, INC.,  
EASTERN DIVISION, TIPTON, INDIANA 46072

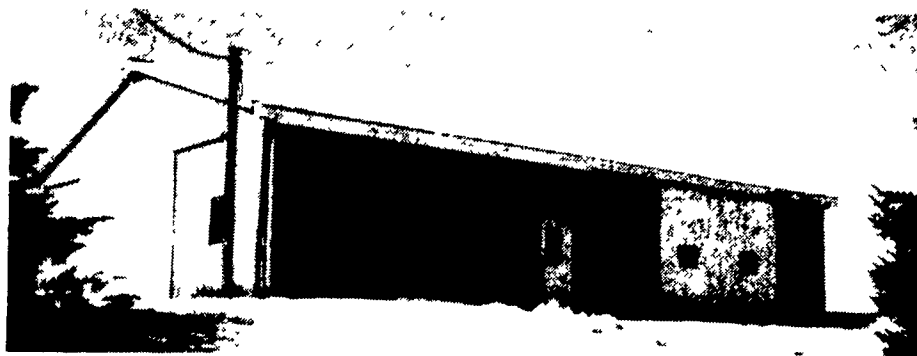
The Limitation of Warranty and remedy appearing on the label is part of the terms of sale.

Pioneer is a brand name; numbers identify varieties.

\*Registered trademark of Pioneer Hi-Bred International, Inc.,  
Des Moines, Iowa, U.S.A.

## POLE BUILDINGS

by Stoltzfus Builders



CUSTOM BUILT AGRICULTURAL, RESIDENTIAL AND COMMERCIAL BUILDINGS FOR A VARIETY OF NEEDS:

- Painted Galvanized Roof & Siding in a wide range of sizes, designs and colors.
- Weather Resistant Pressure Treated Poles and 2x6's T&G Skirting

Call For A Free Brochure

**BEN STOLTZFUS**  
(215) 273-3456

**SAM STOLTZFUS**  
(215) 273-3495

Honeybrook, PA

### SELF-LOCKING FEED THRU FENCE



3 Sizes: Calves - Small  
Heifers - Adjustable (Shown)  
Cows - Large

#### CUSTOM BUILT QUALITY PRODUCTS

- Headgates
- Spring Latches
- Hog Equipment
- Blocking Chutes
- 3 Pt. Hog Crate
- No-chute Hog Trailers
- Portable Welding
- Gates
- Barnyard Fence
- Feed Thru Fence
- Hay Wagons
- Feed Carts
- 3 Round Bale Carriers

Call For More Information-Free Estimates

**CALEB A. KREIDER & SON**  
Building & Welding  
(717) 665-6259 (717) 626-1862

## THE PILLSBURY COMPANY

### COMMODITIES

- Wet Brewers Grain
- Dry Brewers Grain
- Other As Available

### WEIGH/MIXER

- Mobile & Truck Mt.
- Stationary



### MINERALS

- Basic Ingredients
- Complete Mixes
- Custom Mixes
- Trace Pre-Mix

### MILK REPLACERS

- 20/20
- 21/10 (All Milk)
- 22/15 (Soyprotein)

FOR MORE INFORMATION  
CALL:

**THE PILLSBURY CO.**  
1358 N. Main St.  
Harrisonburg, Va.  
(703-434-5621)

**THE PILLSBURY CO.**  
127 Edward St.  
Philadelphia, Pa.  
(215-351-9211)