

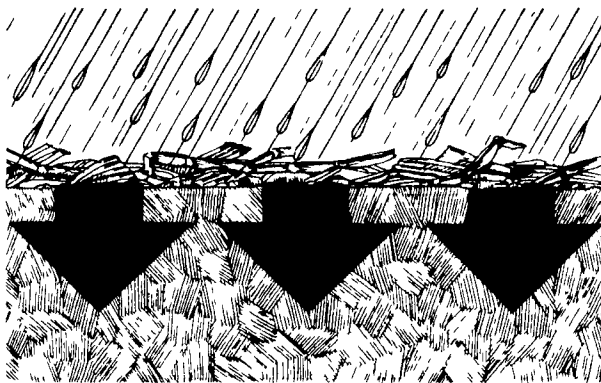
Three reasons why Bicep gives better control than most tank mixes.

Low volatility

Sure, most tank mixes do a pretty good job on weeds and grasses in corn. But what if you could get even better control with just a single product? With Bicep[®], you can.

Bicep is different. It's the double-duty herbicide that gets both weeds and grasses all by itself. In fact, Bicep actually outperforms most tank mixes. One reason why is that Bicep is low in volatility.

Volatile herbicides escape into



Bicep goes into the soil, not into the air

the air soon after application. They become ineffective. But not Bicep. Put it down and it stays put for season-long control—even in cool, wet weather.

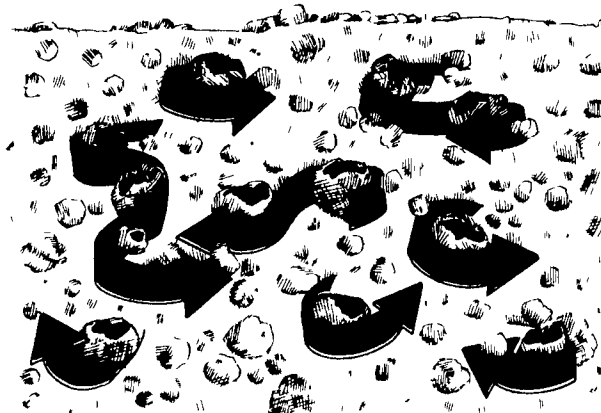
Low volatility is just the beginning of what makes Bicep better. Keep it in mind if you're up against tough weeds like cocklebur, pigweed, ragweed or black nightshade. Or late germinating grasses like foxtail, panicum or crabgrass.

Solubility

Bicep is more soluble than most tank-mix combinations.

Solubility is the ability of a herbicide to dissolve in water and become available for weed and grass uptake. The extra solubility of Bicep really helps. Because of it, Bicep is easily carried by water into the weed and grass germinating zone of the soil. And once it's there, Bicep is better dispersed. So it does a better job.

Greater solubility also makes Bicep readily available in the soil to be



Bicep stays available and active in the soil solution

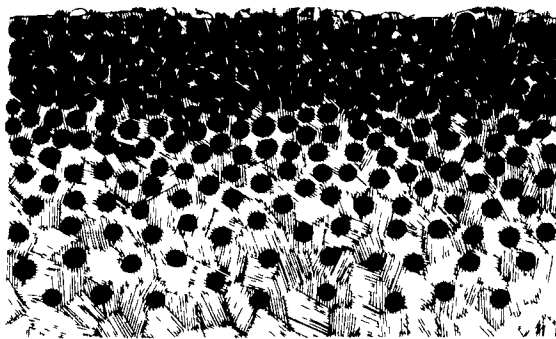
absorbed by the roots and shoots of weed seedlings that compete with corn. And it's part of the reason Bicep is so effective in reduced tillage fields. A light rainfall is all it takes to wash Bicep off surface trash and into the soil where it will go right to work.

Yet, for all its solubility, Bicep doesn't leach out significantly. It will give you the control you need right through harvest, even in a rainy growing season.

Excellent adsorption

Adsorption is the adhesive quality of a herbicide—how tightly or loosely it clings to soil particles. A herbicide that is too adsorptive becomes tied up by the soil—it becomes inactive. A herbicide that is not adsorptive enough leaches out excessively.

But with Bicep, adsorption is excellent, which helps explain why Bicep has staying power. Bicep stays active in



Bicep stays active in the germinating zone of weeds and grasses

the germinating zone right through harvest. Yet there are no carryover problems with Bicep, so you can rotate to soybeans.

Low volatility. Greater solubility. Excellent adsorption. These are just some of the properties that help make Bicep better than most tank mixes. Your dealer can tell you about other Bicep advantages. Talk to him soon.

CIBA-GEIGY

DOUBLE-DUTY BICEP