

Messick Farm Equipment shows continued growth

Messick Farm Equipment's beginnings go back to November 26, 1952, when two brothers, Marlin and Merville Messick, broke ground and erected a new building along Route 230, three miles north of Elizabethtown.

The dealership officially opened on February 1, 1953, with Marlin as Shop Manager, and Merville handling both the sales and parts department.

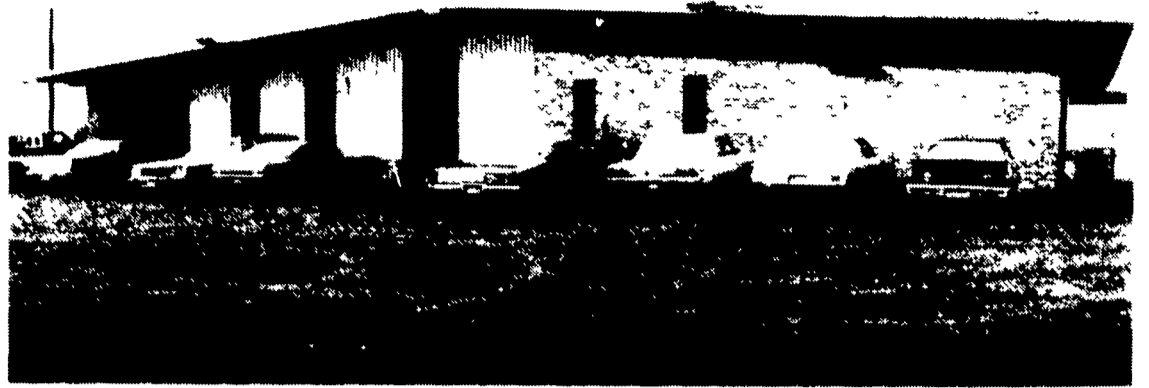
Two years later a full-time salesman and one additional mechanic were hired, and in 1962

an addition was built to the existing building, housing a showroom and additional parts area.

After acquiring full ownership in 1972, Merville incorporated the business with his wife Betty and two sons, Bob and Ken.

The successful Messick enterprise once again outgrew its shell, and a new 21-acre site was purchased at the present location along Route 283, at the Rheems Exit, Elizabethtown.

With the new facilities providing



Messick Farm Equipment, Inc., now: The current facility located along Route 283 at the Rheems Exit, with 13,200 square feet of showroom and service area.

7,200 square feet of shop space, and 6,000 square feet of showroom, Messick celebrated its grand opening in February of 1977.

Today Messick attributes much of its growth to its 22 employees, including 11 mechanics, four partsmen, three salesmen, and four office personnel.

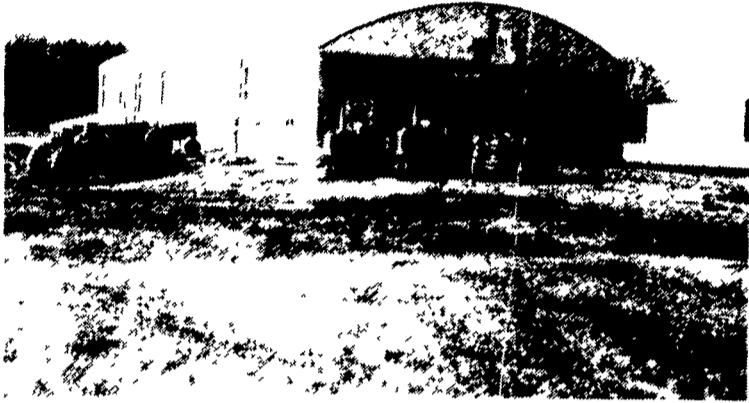
Factory trained as well as privately instructed, Messick's servicemen have over 70 combined years of experience in the agricultural field. The firm's parts department has 38 years of experience in providing customers with the correct parts as quickly as possible.

To Messick's sales staff, with combined I.H. experience totaling 27 years, the idea of simply making a sale, is secondary to their goal of providing the customer with the correct equipment to get the job done.

Active in community affairs as well, each year Messick's hosts the 4-H Tractor Club, and in 1981 the firm received the PA Agricultural Safety Award from the PA Ag Safety Council for their work in providing fire and ambulance crews with victim extraction training in farm-related accidents. Messick's safety programs have also reached into the home, by

providing farm wives with accident procedure instruction.

Merville Messick has had many years to watch his firm evolve to a highly respected dealership, and an asset to the farm community. But Messick Farm Equipment is quick to acknowledge that such success could never have occurred without the support of its valued customers.

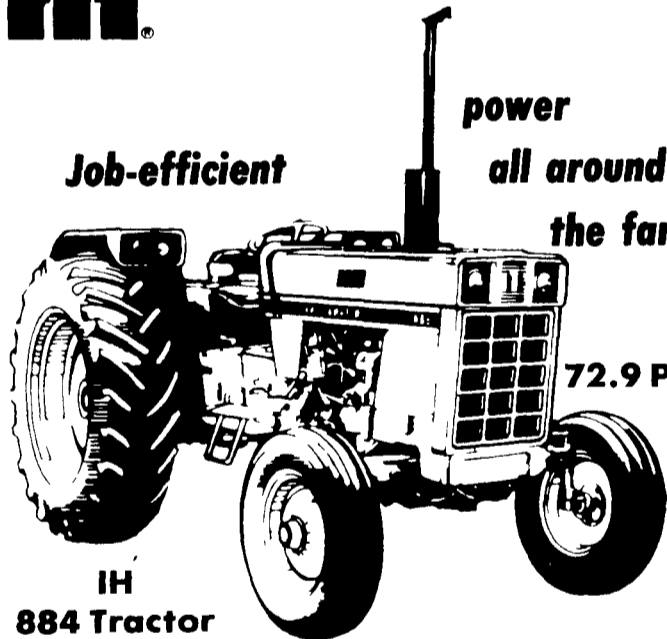


Messick Farm Equipment then: The original building constructed in 1952, along Route 230, three miles north of Elizabethtown.



The Farmer's #1 Choice

Go power!



IH 884 Tractor

Job-efficient

power all around the farm

72.9 PTO hp

- PERFORMANCE
- RELIABILITY
- PRODUCTIVITY

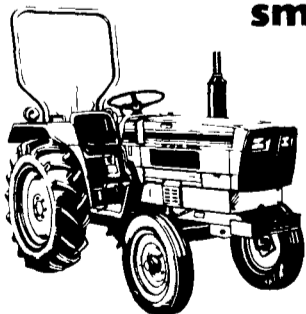


IH 5288 All Wheel Drive

160 PTO hp

**WAIVER OF FINANCE
TILL MARCH 1, 1984
OR CASH REBATES
OR TRIP TO ENGLAND**

Economical diesels for small acreages, general maintenance



International[®]:
234 - 15.2 PTO hp*
244 - 18 PTO hp*
254 - 21 PTO hp*

These little workhorses are IH all the way to give dependable, economical service.

- 3-cylinder diesel water-cooled engines with glow-plug starting
- Category I 3-point hitch and live hydraulics
- Full instrumentation.
- 2 wheel and all-wheel drive models
- Protective frame (ROPS) standard

Manufacturer's estimate

OPEN HOUSE DAYS

FEBRUARY 1984						
S	M	T	W	T	F	S
			1	2	3	4
5	6	7	8	9	10	11
12	13	14	15	16	17	18
19	20	21	22	23	24	25
26	27	28	29			

**Food, Fun,
Fellowship,
Special Events,
Bargains
Galore!**

Put its versatility to work for you!

International[®]
284 Diesel Tractor
27.4 PTO hp



Bring top maneuverability and job economy to any farm, landscaping, nursery or ground maintenance job with the versatile 284 Available in 2 or 4-wheel drive

- Economical water-cooled diesel engine
- Fast-acting hydraulics
- 8 forward speeds, 2 reverse
- 540/1000 RPM transmission-driven PTO
- Category I 3-point hitch

MESSICK FARM EQUIPMENT, INC.

Farm Equipment Is Our Business
RHEEMS EXIT, RT. 283, ELIZABETHTOWN, PA.

(717) 367-1319

(717) 653-8867

We Ship UPS



No 52 R Harvester Thresher