

## Stick with proven weed controls

DeKALB, II. — Despite real weed problems on some government PIK acres last year, most farmers should stay with control programs that have proven effective over the years. If weed infestation proves to be a problem after the crop has emerged, there is an effective post-emergence herbicide arsenal available that has improved the reliability of rescue treatment.

Look at the type of weed control achieved over the past several years. If this level of control is acceptable, don't make any major changes. If, however, weeds were out of control in 1983 give first consideration to the type of weed problem experienced.

If broadleaf weeds were the problem, consider planting those fields to corn in 1984. If grassy

weeds were the problem, consider shifting to soybeans. Hotter chemicals or maximum labeled rates can be used if you don't have to be concerned about crop tolerance or the following year crop rotation.

If weed control is a problem, there are several alternatives to just increasing the chemical rate. Be selective about the type of herbicide used based on which weeds are a problem. post-emergence herbicides and some of the new 3-way tank mixes increase the spectrum of control with less risk of herbicide carryover affecting the following crop.

Farmers should also evaluate the number of crop cultivations, type of equipment used, and seed bed preparation as low cost weed control alternatives. Also consider

delaying planting or planting problem fields last. With a planting delay, more weed seeds may germinate and be controlled at planting.

If the seedbed has considerable residue such as in minimum or no-till, remember that triazine herbicides tend to tie-up with the residue more than other chemicals. You will need to apply at the higher end of the recommended rate. Acetanilide (Lasso, Dual or Ramrod) herbicides tie-up with residue but are released with  $\frac{3}{4}$  inch or more of rain.

Weed control will be more satisfactory if you also review application techniques. If there is significant crop residue, evaluate spray pressure, gallonage and nozzle type. Normal pressure of 25-30 psi may have to be increased to

30-40 psi to increase spray cover. Increasing the spray volume will also help herbicide performance in minimum-or no-till situations. Consider 30 gallons per acre rather than the more common 20 gallon rates.

Finally, nozzle type and positioning greatly affect spray

coverage. A flat fan or hollow cone type will give better penetration of crop residue than a horizontal spray pattern. Flood tips angled so the spray is aimed straight down will also increase penetration of residue. Adjustments will also have to be made in nozzle height and overlap patterns for better performance.

## Zoning session on Tuesday

HONESDALE — An educational meeting on zoning will be held Tuesday at 8 p.m. in the Knights of Columbus Hall, Route 191, one mile south of Honesdale.

The speaker for the session will be Joseph Macialek, Community Development Agent, Penn State Extension Service. He will present

a workshop type meeting to explain the concept of zoning and how it might benefit a community.

The meeting is being conducted by the Wayne County Cooperative Extension Service and all interested persons are welcome to attend.

## 11% ANNUAL PERCENTAGE RATE SOW & GROW LOANS



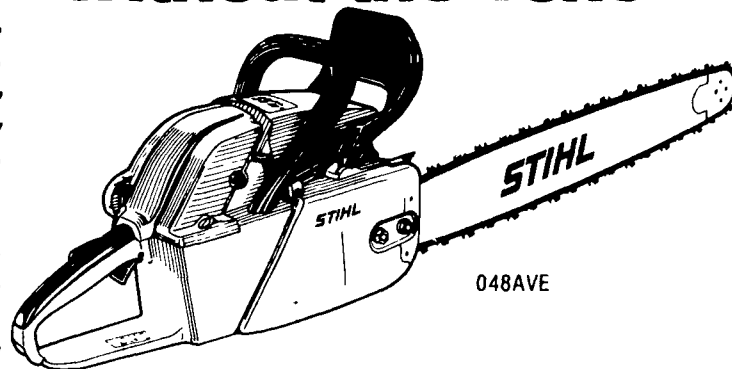
If you're a farmer thinking about a loan for seed, fertilizer or herbicide, come see us. We've got special FIXED RATE LOANS that best match your cash flow.  
AN EQUAL OPPORTUNITY LENDER

**New Holland  
Farmers National  
Bank**

A subsidiary of COLONIAL BANCORP INC

OFFICES IN NEW HOLLAND, SMOKETOWN, INTERCOURSE, AND EDEN RD, LANCASTER  
MEMBER FDIC

## Tons of Power Without the Tons



It took Stihl® to build a saw that combines high power with low weight. The 048AVE. Only 16.8 pounds, it has advanced features standard. And delivers plenty of lugging power that you don't have to lug around.

**STOLTZFUS  
WOODWORK**

RD Gap, PA Box 183  
1 Mile North Rt. 897 From Gap

**A & B SALES  
& SERVICE**

2 Miles South of Rt. 23 Along 772  
Thru Monterey - RD 1 Ronks, PA

**GOOD'S STORE**

At the Country Mart,  
RD2, East Earl  
Route 23 - Just East of Blue Ball  
717-354-4026

**MARTIN HARDWARE  
& EQUIPMENT CO.**

Rt 501 1 1/2 Miles South of Schaefferstown, PA  
Phone 717-949-6817

**WES STAUFFER  
SALES & SERVICE**

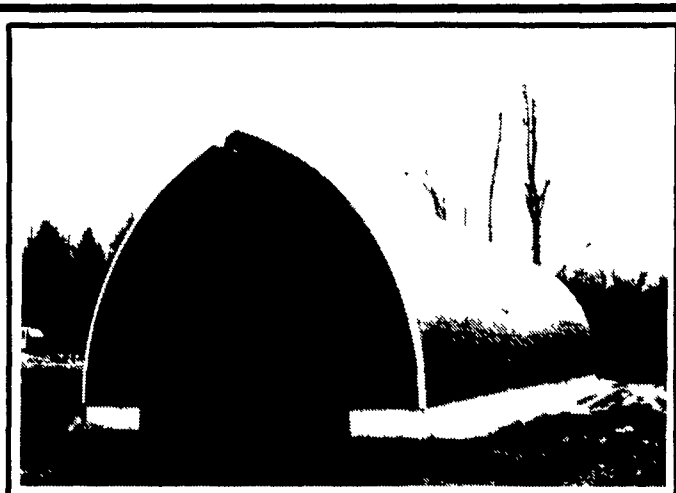
RD 3 Ephrata, PA  
Phone (717) 738-4215  
Ephrata Exit New Rt 222 1/2 Mile West on Rt 322.  
Turn left onto Pleasant Valley Rd

# STIHL®

THE WORLD'S LARGEST SELLING CHAIN SAW

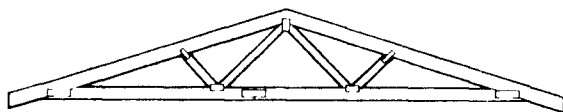


**FOR MORE  
STORAGE  
SPACE AND  
CAPACITY -  
USE A  
LAMINATED  
ARCH  
TYPE  
BUILDING**



**GLUED LAMINATED ONE PIECE ARCH  
GIVES THE ADDED STRENGTH NEEDED  
TO SUPPORT EXTRA FORCES.**

**COSTS  
LESS TO  
BUILD.**



WOOD ROOF TRUSSES

\* TRUSSES FOR SMALL & LARGE BLDG.

\* CRANE  
SERVICE

**CALL  
US AT  
717-866-6581**

Over 25 Years Of  
Quality Service  
& Materials

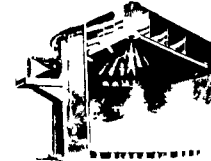
Telephone (717) 866-6581



MANUFACTURERS of  
LAMINATED RAFTERS  
and WOOD ROOF TRUSSES

RICHLAND RD1, Pennsylvania 17087

**Winter  
Discounts**  
plus up to \$800  
Factory Rebates  
Now On  
Stormor® EZEE-DRY®



This is the fast, efficient, dependable way to dry grain. Drying capacities from 100 to 1,000 bu./hr. at 10 pt. removal. And the EZEE-DRY is virtually maintenance free.

The biggest savings all year. Call or stop in today.

**LOUCKS  
GRAIN  
EQUIPMENT,  
INC.**

RD #12 Box 307  
York, PA 17406

**(717) 755-2868**



Manufactured  
by Stormor, Inc.  
Fremont, Nebraska