



# Berks County DHIA Monthly Report

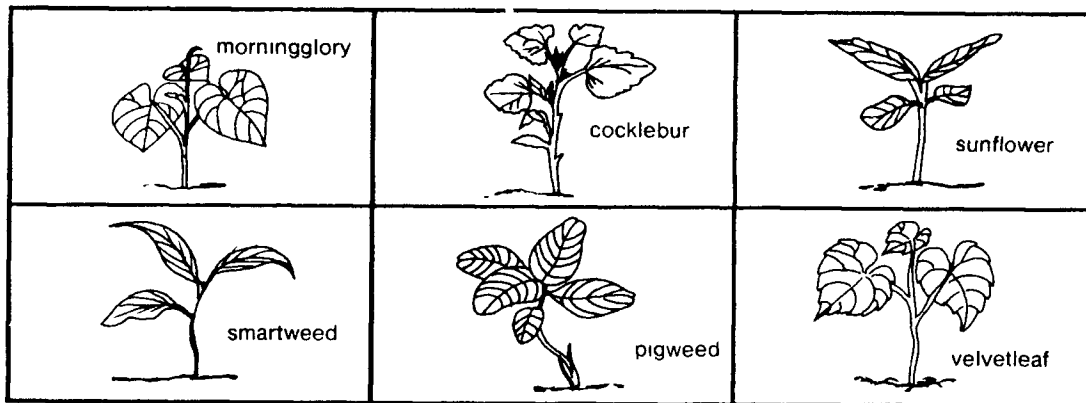
## December Report

OWNER	BREED	NO. COWS	AVERAGE DAYS IN MILK	LBS. MILK	% FAT	LBS. FAT
Char & Tim Kissling	3	68 4	86 5	21,493	826	
Rothrock Golden Hol	3	52 4	89 3	22,134	796	
Plushanski Farms Inc	3	120 8	89 4	20,998	791	
Heindel Farms Inc	3	29 0	87 3	19,142	758	
Junge Farms	3	61 8	87 5	19,450	757	
Bendy Brook Farm	3	47 5	85 2	20,797	746	
Forrest C Stricker	B3	59 4	85 6	19,506	735	
Ken & Robin Wolfskill	B3	44 5	86 8	19,864	729	
Mark A Wolfskill	3	94 6	85 8	19,277	722	
George S Troutman Jr	B3	67 4	90 1	19,125	717	
Stephen J Janos	3	30 4	86 2	20,018	706	
Donald B Duncan	B3	99 2	88 1	17,733	705	
Robert E Kopfer	B3	47 4	89 6	18,925	701	
Reu Hel Farms Inc	3	55 2	87 4	19,576	700	
Mertz Brothers	B3	45 4	82 7	19,359	687	
David L Schrack	B3	104 2	87 0	17,729	684	
Leonard G Stoltzfus	3	60 7	87 9	19,505	681	
Good Bros	B3	58 4	87 3	19,301	679	
Zahncroft Farm	3	50 4	86 3	17,930	671	
Martin Moyer	B3	50 8	84 9	17,239	667	
Clarence B Kulp	3	68 1	87 4	18,166	665	
Ralph & Ken Sanner	B3	75 7	86 7	18,604	661	
Leroy E Howard	3	139 7	89 5	17,952	656	
Mervin Brubaker	B3	69 4	86 8	18,183	652	
Ronald Kelchnere	B3	61 9	83 9	18,298	649	
Merlin J Grube	B3	43 3	86 3	16,604	647	
Lawrence Kieffer	B3	71 8	86 7	18,248	640	
Frank G Gromlich	3	63 0	90 1	16,886	638	
George Schuler	3	55 9	86 8	17,660	638	

Ernest O Miller	B3	194 0	86 3	17,454	636
Richard A Bleiler	B3	51 7	84 2	18,715	636
Daview Farm	3	60 7	84 6	17,601	635
Linden Loch Holstein	B3	59 2	88 7	17,665	635
Ray E Bicksler	3	46 8	86 8	16,461	632
Roger S Buch	3	47 8	83 0	17,764	630
Arlan Krick	B3	67 0	87 3	16,405	630
Andrew D Stoltzfus	B3	143 4	87 9	17,486	626
John H Stump	3	52 1	87 4	17,985	626
Glenn R Harnish	B3	98 0	88 7	17,521	626
Scattered Acres Inc	B3	152 5	84 6	17,043	625
William G Howerter	3	87 9	89 2	17,777	625
Red Fever Farm	B3	63 5	87 7	16,896	624
Whirlwind Acres	B3	91 8	87 9	17,096	624
Meadow Spring Farm	G3	39 9	83 1	16,987	622
George E Moyer	3	102 1	83 6	16,117	621
RR Troutman & Sons	3	122 7	85 1	16,657	620
Robert C Dreisbach	4	78 1	84 0	13,043	618
Vista Grande Farm	3	82 8	85 3	16,866	618
Heindel Farms Inc	1	25 6	85 1	14,816	617
Yost Brothers	B3	113 7	85 5	17,006	617
R Bernell Burkholder	B3	40 7	84 8	16,916	613
Tulpa Canal Farm	B8	36 4	87 6	17,100	612
Pinnacle View Dairy	B3	48 0	85 8	16,563	612
Paul B Martin	B3	58 6	83 2	18,567	612
Ranshar Farms	B3	55 8	83 9	16,796	610
William C Adams	3	90 3	89 2	15,408	610
Robert L Sattazah	B3	102 0	90 7	16,823	608
Mat Mar Farms Inc	3	86 7	86 5	17,508	608
Ontelynn Acres	3	112 4	86 8	16,219	608
Harvy M Weaver	G3	50 2	83 7	16,190	606
FM Browns Sons Inc	B3	91 0	90 2	17,910	606
Raymond B Nolt	B3	81 8	86 2	16,579	606
Udder Valley Farm	B3	73 4	85 3	16,780	605
B&K Grimes	B3	129 0	88 2	15,268	603
Harold Fenstermaker	3	34 2	86 6	15,664	603
Daniel J Harnish	B3	93 2	84 0	15,920	603
Barry L Burkholder	B3	48 3	81 6	17,175	602
Glenn B Gockley	B3	45 1	86 5	16,826	602
Fred J Walters	B3	70 1	86 9	16,384	601
Show Top Farms	3	152 9	89 9	16,586	600
Ken & Debra Dietrich	B3	39 8	84 6	15,958	599
Arthur D Schlappich	B3	57 1	86 5	16,320	599
Tim Kleinsmith	B3	38 9	88 2	17,294	599
Swatara Dairy Farm	3	78 0	80 6	14,873	597
Tom Werley	B3	54 2	87 2	16,329	596
Ronald L Richard	3	51 5	85 3	17,851	595
Donald Burkholder	G3	93 7	86 3	16,398	589
Marlin J Stutzman	B3	58 4	86 6	16 147	588

Dana Stoult	B3	14 3	78 4	16,400	588
Raymond A Seidel	3	34 5	87 6	16,670	587
Terry Kunkel	B3	40 0	84 7	16,899	586
E Daniel Leatherman	B3	67 7	85 8	15,932	586
Ker Min Farms	3	78 3	89 3	16,502	586
Way Har Farms	B3	106 9	87 4	15,730	586
David J Williams	B3	40 5	82 7	16,278	586
Ernest C Hoffman	3	55 7	89 4	15,692	583
Don Aloa	B3	44 9	82 5	15,646	582
David Y Knauer	B3	51 5	84 0	15,792	581
Lynn E Stoult	B3	73 3	83 6	17,244	581
Clyde Loump	B3	57 2	86 4	15,768	580
Ridge Crest Farms	B3	50 6	83 5	16,069	579
Lynnacres	3	154 9	88 3	16,688	579
Wilmer Hurst	B8	51 3	83 0	14,539	577
Harvey C Krill Jr	B3	44 4	88 3	16,195	576
Alton Rohrbach	B3	49 3	87 9	16,021	576
William Mitchell	B3	31 3	87 5	16,075	576
Irvin G Weaver	B3	49 2	90 4	15,838	576
Charles D Moyer	B3	121 9	84 4	14,754	576
Teen Chal Farm	B3	112 5	87 8	15,704	575
Wilson M Balthaser	B3	71 4	85 1	15,571	573
Carl E Hollenbach	2	56 6	83 1	12,734	572
Win-Dale Farm	4	49 3	88 6	11,348	571
Charles W Lamm	B3	101 1	86 6	15,920	570
Clarence C Sattazah	B3	100 9	86 9	16,480	568
Retland Farm	3	50 9	86 7	17,041	567
Floyd Kurtz	3	49 5	84 1	16,125	567
Phillip Wisser	B3	29 3	88 0	15,960	567
Robert Yanos	G3	60 5	87 9	15,096	566
Hylark Farm	3	80 3	85 0	14,861	561
Richard W Hoppes	B3	62 2	88 4	16,187	561
Donald M Meyers	3	62 7	86 7	15,125	560
Herb Top Farms	B3	28 8	82 0	14,779	559
Elvin Brubaker	B3	38 2	86 8	15,143	556
Blue Mtn Academy	B3	119 2	87 4	16,903	556
Lewis Nolt	B8	58 2	83 2	15,347	555
Nathan Nolt	B3	55 0	81 5	14,795	555
Alfred E Schmidt	3	57 7	88 3	15,499	555
Gary Heffner	B3	39 8	80 6	14,992	554
RC&CE Wieder	B3	45 6	83 9	15,512	553
Richard H Hoffman	B5	34 9	84 4	13,706	553
Eleanor K Siegfried	3	93 5	89 2	14,675	552
Charles W Wagner	B3	49 0	89 3	15,535	551
Vernon G Good	B3	39 9	88 1	16,016	551
Kenneth Zook	B3	48 1	86 1	16,557	551
Phillip J Werley	B3	59 2	83 9	14,900	551
Pine Brook Farm	3	104 5	82 8	15,223	550
Leon Senseng	B3	55 4	89 9	15,335	550

**Pick the weeds in your corn you'd like to get rid of...**



**Then pick Banvel® herbicide... the Big Plus...to do the job.**

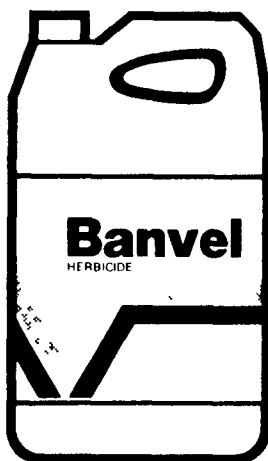
**Pre-emergence:** Banvel tank-mixed with \*Lasso® to get broadleaf weeds along with grasses...ready and waiting when later weeds germinate.

**Early layby** (in corn up to five inches high): use Banvel at a one pint rate. Stop weeds before they've had a chance to develop. This Banvel overlay controls cocklebur, sunflower, annual morningglory, other troublemakers.

**Post-emergence** (corn up to 36 inches): Banvel herbicide controls the real problems—like smartweed, velvetleaf, bindweed, and seedling Canada thistle.

Before buying a less adaptable herbicide that may be short on performance, check out the Big Plus of Banvel...from Velsicol.

\*Lasso® is a registered trademark of Monsanto Company. The Lasso + Banvel tank mix is cleared for use in Colorado, Illinois, Indiana, Iowa, Kansas, Kentucky, Michigan, Minnesota, Missouri, Montana, Nebraska, New York, North Dakota, Ohio, Pennsylvania, South Dakota, Utah, and Wisconsin.

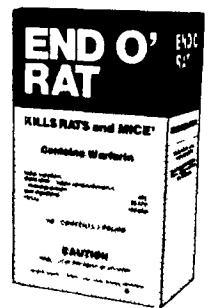


Before using any pesticide read the label.

**P. L. ROHRER & BRO., INC.**  
Smoketown, PA PH: 717-299-2571

## Kills rats and mice!

End O'Rat works fast to kill unwanted rats and mice. Completely safe for use around the home, farm or factory buildings. End O'Rat is specifically formulated to appeal to the natural feeding habits of rats and mice. End O'Rat contains Warfarin—proven effectiveness. Put End O'Rat to work for you today!

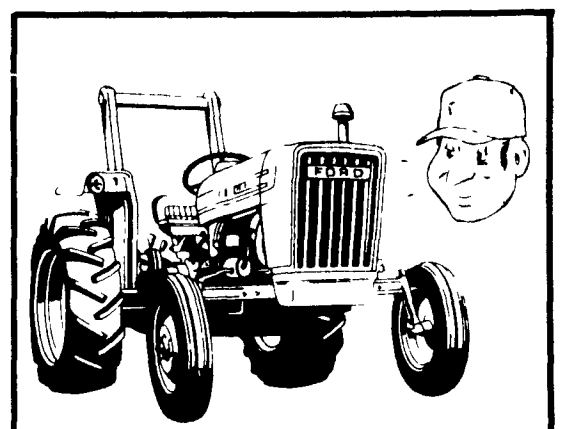


# END O' RAT

Distributed by

**New Holland Supply Co.**  
New Holland, PA  
717-354-2340

**Caldwell Supply Co.**  
West Trenton, NJ  
609-882-2223



**I'M SMILING BECAUSE I BOUGHT A NEW FORD AND SAVED A BUNDLE!**

**TIME'S RUNNING OUT DO YOU HAVE YOUR TRACTOR READY FOR THE FIELD?**



**ALLEN H. MATZ, INC.**  
505 E. Main St., New Holland  
Ph: 717-354-2214

SERVING THE COMMUNITY THIRTY FOUR YEARS  
**LANC CO'S OLDEST FORD DEALER**