

# Livestock market and auction news



## Virginia Auction Summary

January 12-18  
Report supplied by VDA  
Total of Va. Weekly Feeder Cattle Auction Receipts: 2,803.  
TREND: Steady to \$3 higher.

### Southwestern, Va. Auction Summary

January 12-18  
STEERS: 300-500 lbs. Medium 1 57.00-69.50; Large 1 58.00-66.00; Small 1 58.00-68.00. 500-700 lbs. Medium 1 56.00-65.50; Large 1 60.00-65.50; Small 1 51.00-58.00. 700-1000 lbs. Medium 1 53.00-63.00; Small 1 54.00.

HEIFERS: 300-500 lbs. Medium 1 45.50-54.50; Large 1 45.50-55.50; Small 1 42.00-49.00. 500-700 lbs. Medium 1 45.00-51.75; Large 1 47.50-53.25; Small 1 44.00-50.50; 700-900 lbs. Medium 1 40.50-48.50; Large 1 44.00-52.75.

### Northern Va. Auction Summary

January 12-18  
STEERS: 300-500 lbs. Medium 1 56.50-68.00; Large 1 59.00-69.00; Small 1 56.00-57.50. 500-700 lbs. Medium 1 59.50-69.75; Large 1 64.75-65.50; Small 1 49.00-62.50. 700-1000 lbs. Medium 1 51.25-62.00; Large 1 55.25-58.00.

HEIFERS: 300-500 lbs. Medium 1 43.00-53.00; Large 1 48.00-53.00; Small 1 43.50-48.00. 500-700 lbs. Medium 1 44.00-52.25; Large 1 49.00-54.50; Small 1 47.00-48.00. 700-900 lbs. Medium 1 44.00-51.25; Small 1 44.25.

### Southeast Va. Auction Summary

January 12-18  
STEERS: 300-500 lbs. Medium 1 54.00-55.00; Large 1 56.00-61.00. 500-700 lbs. Medium 1 54.00-60.00; Large 1 53.50-56.00.

HEIFERS: 300-500 lbs. 48.00-55.00; Large 1 51.50-54.00. 500-700 lbs. Medium 1 46.00-47.00. 700-900 lbs. Medium 1 46.00.

## Four States Livestock

Hagerstown, Md.  
Wednesday, January 11  
Report supplied by auction  
SLAUGHTER: Fed Steers-Steady. Low Choice 61.50; Good 57.00-61.00; Medium 56.00 down. Heifers- \$3.00 higher; Choice 60.00-65.00; Good 52.00-59.00; Medium 51.00 down. Cows- Good run, very active, \$4.00 higher. Individual at 45.25; High Yield 39.00-42.00; Average 34.00-38.00; Big Middle 29.00-33.00; Fatty Herf 28.00-32.00; Shelly 31.00 down. Fat Bulls-Steady prices; Good 47.00-50.00; Medium 42.00-46.00. Veal Calves-Choice \$6.00 higher, Light and Farm Calves steady. Choice 95.00-109.00; Good 85.00-94.00; Medium 65.00-84.00; Farm Hfrs. 48.00-60.00; Farm Bulls 80.00-100.00; Light & Weak 41.00 down.

STOCKER: Steers 300-550 lbs.-Choice 57.00-60.00; Good 52.00-56.00; Medium 45.00-51.00; Culls 44.00 down. Steers 600-850 lbs.-Choice 55.00-58.00; Good 50.00-54.00; Medium 49.00 down. Heifers-(All weights) Choice 47.00-48.50; Good 43.00-46.00; Medium 42.00 down. Springing Heifers- to 460.00. Pigs, Hd- Very active, steady prices. 20-30 lbs. 10.00-19.00; 40-60 lbs. 20.00-26.00. Shoats by Lb.-32.00-37.00. Slaughter Hogs- Good run, \$2.00 higher. 220-240 lbs. 51.30-52.25; 245-260 lbs. 50.50-51.85; 300-360 lbs. 39.00-41.00. Sows- 500-600 lbs. 41.00-45.50; 300-450 lbs. 37.00-40.00.

## Lebanon Valley Livestock

Fredericksburg, Pa.  
Tuesday, Jan. 17  
Report Supplied by PDA  
CATTLE 231. Compared with the market two weeks ago: Few Choice slaughter steers 67.10-70.00, few Good 62.10-66.10, few Good & Choice holsteins 57.25-61.85, Standard 52.00-57, Utility & Low Standard 37.00-49.75. Individual Choice slaughter heifer at 66.00,

few Good 55.75-58.75, few Standard 53.25-54.75, few Utility 41.00-47.85. Breaking Utility & Commercial slaughter cows 39.75-42, few 43.00, couple 46.75&49.25, Cutter & Boning Utility 34.75-39.85, few 41.10, Canner & Low Cutter 30.00-36.50, few Shells down to 15.00. Few Good slaughter bullocks 52.00-56.35, Standard 45.00-51.50. Few Yield Grade #1 1560-1970 lbs. slaughter bulls 50.50-52.

CALVES 252. Few Choice vealers 85.00-104, Good 65.00-79, Standard & Good 90-120 lbs. 51.00-55, few 59.00, 60-85 lbs. 45.00-51, few down to 39.00, few Utility 60-100 lbs. 30.00-40.

FARM CALVES: Holstein Bulls 90-140 lbs. 63.00-105, mostly 80.00-100; Holstein Heifers 90-120 lbs. 53.00-86.00.

HOGS 190. US No. 1-2 215-260 lbs. barrows and gilts 50.35-52, 205-215 lbs. 49.00-49.50, No. 2-3 310-355 lbs. 38.00-41.75, No. 1-3 135-165 lbs. 30.50-35.50, 188-199 lbs. 44.35-45.60. US No. 1-3 310-520 lbs. sows 37.50-41.50, No. 2-3 250-480 lbs. 30.00-34, Medium 255-310 lbs. 25.00-32.00. BOARS 26.00-30.25, light weights 28.00-33.25.

FEEDER PIGS 16. Not enough of any one grade to establish a market.

SHEEP 2. Individual Good 75 lbs. wooled slaughter lamb at 48.00. One Slaughter ewe at 17.00. GOATS 1: 28.00 per head.

## Oklahoma Cattle

Wednesday, January 18  
Report supplied by USDA  
Estimated Receipts 3,200  
Same Day Last Week 10,129  
Trade moderately active, Feeder Steers and Heifers steady; Heifers in limited test. Bulk of receipts Medium Frame 1 and Mixed 1-2 500-850 lb. Feeder Steers.  
FEEDER STEERS: Medium Frame 1, few 385-500 lb. 68.10-71.50, few 500-575 lb. 66.50-68.40; 600-700 lb. 66.60-69.40; 700-800 lb. 65.25-68.90; 800-900 lb. 64.00-67.80. Small Frame 1 475-700 lb. 60.70-65.05. Medium and Large Frame 1-2 400-500 lb. 64.50-68.30; 500-600 lb. 64.55-

68.30; 600-700 lb. 63.75-64.75; 700-800 lb. 62.80-65.05; few 825 lb. 61.10-64.10. Medium and Large Frame 2 Pkg. 550 lb. 62.25; 675-850 lb. 57.20-60.55. Large Frame 2 Holsteins lot 460 lb. 46.00; 660 lb. 49.40; 855 lb. 48.25; 1010-1015 lb. 45.90-46.95.

FEEDER HEIFERS: Medium Frame 1 550-600 lb. 61.50-61.80 in limited test; 670-680 lb. 61.70-62.50; 700-725 lb. 58.90-62.80. Medium and Large Frame Mixed 1-2 375-500 lb. 52.20-54.05; 500-600 lb. 52.75-56.60; 600-725 lb. 53.10-57.70. Medium and Large Frame 2 350-500 lb. 51.60-53.10.

### Thursday, January 19

Weekly Cattle Summary. For the week, Feeder Steers firm to 1.00 higher, Feeder Heifers steady to firm. Slaughter Cows 2.00-4.00 higher, several 2.50-3.00 up. Bulls firm to 1.00 higher. Breaking-Utility and Commercial 2-4 Slaughter Cows 36.00-39.75; Cutter and Boning-Utility 1-2 32.25-37.50; Canner and Low-Cutter 27.00-31.70, several 28.50-31.50. Bulls YG 1-2 1250-1500 lb. 42.00-49.00, clustering 43.50-47.50; few 1500-1800 lb. 47.50-51.00. Receipts this week near 11,400, Weather and road conditions curtailing numbers. Last week's actual count 21,870 head, last year 14,052. Feeder Steers and Heifers made up 91 percent of total run; Cows and Bulls 9 percent.

## Central U.S. Carlot

Pork Report  
Wednesday, January 18  
Report supplied by USDA  
Compared to Tuesday's 4:00 report: Fresh Pork Loins 14-17 lbs. Regular Trim \$1.00-4.00 higher, 17-22 lbs. \$2.00-3.50 higher. Boston Butts \$4.00-5.50 higher. Spareribs firm light test 3.5/down lbs. Skinned Hams 17-20 lbs. \$1.00 higher. Frozen Sdls Bellies 16-18 lbs. steady to \$2.00 higher. Trading moderate. Demand moderate to good for moderate offerings.  
Sales reported on 60 loads of Fresh Pork Cuts and 14 loads of Trimmings and Boneless Processing Pork.

**FRESH PORK CUTS**  
LOINS: (Regular) 14-17 lbs. 104.00-108.00, loads 103.50, 1.00-4.00 higher; 17-22 lbs. 101.00, 2.00-3.50 higher.  
LOINS: (Frozen) 16-19 lbs. 91.00, no comparison; 19-22 lbs. 88.00, no comparison.  
LOINS: (Retail Trim) 14-17 lbs. 117.00-118.00, firm.  
PICNICS: 4-8 lbs. 54.00-56.00, no comparison.  
BOSTON BUTTS: 4-8 lbs. 74.00-76.00, 4.00-5.50 higher; 4-8 lbs. 72.00, frozen, no comparison; 8&up lbs. 75.00, no comparison.  
SPARERIBS: 3.5/down lbs. 111.00-114.00, firm; 3.5-5.5 lbs. 95.00-100.00, no comparison.  
HAMS (Skinned): 14-17 lbs. 72.00-72.50, firm; 17-20 lbs. 71.00-73.00, bulk 71.00, 1.00 higher.  
BELLIES (Sdls - Skin On): 4 Mixed Weight Loads. 12-14 lbs. 71.00 PLS; 14-16 lbs. 71.00 PLS; 16-18 lbs. 69.00-70.00 PLS; 16-18 lbs. 62.00-64.00, frozen, steady-2.00 higher.  
**PORK TRIMMINGS/ BONELESS PROCESSING PORK (Chemical Lean)**  
42% Lean Trimmings Fresh 44.50, no comparison.  
72% Lean Trimmings Fresh 69.00-70.00, no comparison.  
72% Lean Trimmings Frozen 70.00-71.50, no comparison.  
Bnls Picnics Fresh 70.00-72.00, steady-2.00 higher.  
Bnls Picnics Frozen 73.00.

## Valley Livestock

Valley Stockyards  
Athens, Pa.  
Monday, January 16  
Report supplied by auction  
Holstein Hfr. Calves to 77.00; Veal Calves 65.00-93.00; Vealer Bull Calves 80.00-114.00; Slaughter Calves 40.00-55.00; Grassers & Feeders 30.00-49.00; Lambs 45.00-54.50; Sheep 15.00-27.00; Hogs, 200 to 250 45.00-50.50; Sows 36.00-40.50; Boars 25.00-32.00; Pigs 10.00-21.00; Heifers 36.00-44.00; Steers, holsteins 38.00-49.75; Steers, feeder 36.00-49.00; Bulls 43.50-48.75; Cows, utility 37.00-40.25; Cows, fat 36.50-39.00; Cows, medium 34.50-36.00; Cows, poor or small 29.00-32.50; Cattle Market higher; Calf Market higher; Horses small to 190.00; Ponies none; Goats 2.50-60.00; Hay 80.00 per ton; Rabbits 4.00-7.00.

## Hamp-York Production Sale

Sat. Feb. 4, 1984  
1 P.M. on the farm  
40 Hamp & York Boars  
75 Hamp & York & Cross Gilts 25 Bred Gilts  
Boars will have SCANDATA  
Fieldman - Jack Ficken Ringman - Randall Updike  
Henry Holloway



Litter 122-8 sired by Chug  
Litter 122-6 sired by Chug  
You can buy with CONFIDENCE in our  
**SOUND PRODUCTION**  
**SOUND HERD HEALTH**  
**SOUND CUSTOMER RELATIONS**

All pigs raised on concrete  
No drugs in feed after pigs are 75 pounds  
Brucellosis & PRV free herd  
Negative TB tested  
Treated for parasites

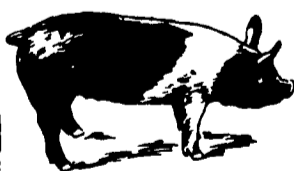
## franklin feeser

Box 372, Taneytown, Maryland 21787  
(301) 751-1287  
"WE GUARANTEE WHAT WE SELL"  
For further information write or call

## CHARGE YOUR BATTERY FROM THE SUN.

A new self regulating 12 volt solar battery charger now available at **50% DISCOUNT**  
The new M61 our very latest module from Arco Solar.

For more information write to  
**BENUEL R. STOLTZFOOS**  
Bird-In-Hand RD #1 Box 179, Pa 17505



## EMERY'S BUYING STATION

### OPEN TO RECEIVE YOUR MARKET HOGS

AT THE GREEN DRAGON MARKET  
RD 4, EPHRATA, PA 17522  
1 MILE NORTH OF EPHRATA  
ON NORTH STATE STREET.

HOURS  
MONDAY, TUESDAY, and  
WEDNESDAY  
6:00 A.M. to 11:30 A.M.

'215-458-5677 Residence  
717-733-9648 Office

**YOU ARE PAID FOR YOUR HOGS IMMEDIATELY**

Ken & Lois Emery, Proprietors

## LOUIS LYONS & SON

Consign your cattle and hogs, feeder pigs & calves to Louis Lyons & Son. They offer choice service, excellent sorting & marketing of your livestock.

Charles Diller, Manager  
Phone 394-7915  
Burnell Siegrist - Buyer & Seller  
Phone 626-8653

Experienced Personnel

Immediate Weighing

## VINTAGE SALES STABLES, INC.

### AUCTIONS

Starting  
**THURSDAY, NOV. 3, 1983**  
Every Thursday at 1 P.M.  
**HAY, STRAW & GRAIN**  
Sold on Commission  
10 miles east of Lancaster, 8 miles west of Coatesville on Rt. 30, Paradise, PA.

L. Robert Frame, Manager  
For information  
717-442-4181  
215-458-8518