



Weekly New York Egg Market

From Friday, January 13 to Thursday, January 19

	Fri.	Mon.	Tues.	Wed.	Thurs.
WHITE					
Jumbo	1.19	1.20	1.21	1.21	1.21
Ex Large	1.18	1.19	1.20	1.20	1.20
Large	1.17	1.18	1.19	1.19	1.19
Mediums	1.15	1.16	1.17	1.17	1.17
Pullets	.98	.99	1.00	1.00	1.00
Off Grade	1.09	1.10	1.11	1.11	1.11
BROWN					
Jumbo	--	--	--	--	--
Ex Large	1.26	1.27	1.28	1.28	1.28
Large	1.24	1.25	1.26	1.26	1.26
Mediums	1.18	1.19	1.20	1.20	1.20
Pullets	Unquoted				
Peewees	Unquoted				
Off Grade					
Undergrades	.74	.75	.77	.78	.78
Checks	.72	.73	.75	.76	.76

Breaking Stock: Friday - 25.20-26.40, 26.40-26.70; Monday - 25.50-26.40, 26.40-26.70; Tuesday - 26.10-27.00, 26.70-27.30; Wednesday - 26.10-27.30, 27.00-27.60.

N.E. Weekly Shell Egg Report

Tuesday, January 17
Report supplied by USDA

Prices paid per dozen Grade "A" Brown eggs in cartons delivered to retail stores.

	Ex. Large	Large	Medium	Small
MASS.X	1.29-1.31	1.28-1.30	1.22-1.24	1.01-1.03
Mostly	1.29	1.28	1.22	1.01
N. HAMP.	1.22-1.26	1.20-1.24	1.14-1.18	93-97
Mostly	1.24-1.25	1.22-1.23	1.16-1.17	95-96
R.I.	1.20-1.28	1.19-1.26	1.14-1.20	92-99
Mostly	1.20-1.25	1.19-1.23	1.14-1.17	92-96
VERMONT	1.18-1.30	1.15-1.25	1.10-1.20	
Mostly	1.20-1.22	1.18-1.21	1.12-1.15	
MAINE	1.29-1.31	1.27-1.30	1.21-1.24	1.00-1.03

X Includes Central and Western Sections only.

Heinsey's Poultry Market

Root's, East Petersburg
Tuesday, January 17
Report supplied by auction
RABBITS: 4-6 lbs. range .60-.80 per lb.
RABBITS: 7-12 lbs. range .50-.72 per lb.
BUNNIES: range .50-1.25 ea.
GUINEA PIGS: range .50-2.75 ea.
GOATS: range 32.00-43.00 ea.
KID GOATS: range 9.00-30.00.
TOTAL NUMBER COOPS: 336.

Eastern Pa. & N.J. Poultry

Wednesday, January 18
Report supplied by USDA
Market Comment: The overall slaughter has increased at most plants, but trading still remains limited and at 27 cents delivered, unchanged from last week. The availability of live is short of plant needs as they run only parttime schedules. Canner pack demand is light.
Prices Paid at Farm:
Light Type Hens: Too few to report.
F.O.B. Plant: Too few to report.

New York Multiple Drop Broiler Report

Thursday, January 19
Report supplied by USDA
Current broiler/fryer negotiated prices for immediate delivery includes mostly multiple-drop shipments to New York City from Delmarva.
RANGE: U.S. Grade A .65-.69; Weighted AVG.: U.S. Grade A 68.28; Premium (X) Boxes 11.454.
(X) Includes special services, selected competitive brands, etc.

Nest Run Eggs

Prices are from Egg Clearinghouse, Inc., (ECI) Durham, N.H. and reflect trading prices for gradable nest run eggs (GNR) on ECI, a nationwide trading center for producers, packers and marketers. GNR eggs are classified by weight in 30-dozen cases, and traded in lots of either 300 or 750 cases. Prices are FOB buyers dock, and are computed Tuesday and Thursday of each week. This week's prices for each classification were.

Classification	Weight	DATE	DATE
		Jan. 17 Tuesday	Jan. 19 Thursday
Class 1 - Large	48 lbs.	1.05	1.05
Class 2 - Large	45 lbs.	1.04	1.04
Class 3 - Medium	42 lbs.	1.00	1.00
Class 4 - Small	39 lbs.	.88	.90
Breaking Stock	48 lbs.	.89	.90
Checks	48 lbs.	.82	.83

Delmarva Poultry

Thursday, January 19
Report supplied by USDA
Market Comment: Ready to cook movement on whole birds is good to very good. Current production easily clears, and most plants are oversold. Cutlets and breasts are moving, and supplies continue to clear. Legs remain short, and although some buyers are balking, orders still remain strong. Leg quarters are in light supply as most plants are no longer cutting them at this time. Wing movement is quite satisfactory.
Slaughter schedules are moderate, and several plants are not operating Friday. Live supplies are adequate at mostly lighter than desired weights. Undertone firm.
Today's L.T.L. asking prices are .06 higher on U.S. Grade A at 66-71 cents.
Estimated slaughter of broiler fryers in Delmarva (000).
Estimated 1/19 1,813; Actual 1/12 1,931; Actual 1/17 1,877; Average Weights 1/17 4.11; Average Weights 1/10 4.15.

Philadelphia Eggs

Thursday, January 19
Report supplied by USDA
MARKET COMMENT: Prices higher. Cartoned egg movement was good as packers noted add on orders for today and good orders for Friday. Jumbos remain long in most quarters. Extra large are adequate to fully adequate but kept in balance due to being substituted into large cartons. Large are adequate. Mediums and smalls are short from local production and must be supplemented by outside purchases. Inquiry for nest runs remains fairly active in some quarters. Undertone is fully steady.
Prices to retailers: sales to volume buyers, consumer grades white eggs in cartons delivered store door:
A Extra Large 1.13-1.18; A Large 1.12-1.17; A Medium 1.09-1.14.



Copyright 1983 by Lancaster Farming
P.O. Box 366 - Lititz, PA 17543
Office: 22 E. Main St., Lititz, PA 17543
Record-Express Office Building
Phone: Lancaster 717-394-3047
or Lititz 717-626-1164

Robert G. Campbell, Publisher
Dick Anglestein, Editor
Kim Herr, Home Editor
Trish Williams, Staff Writer
Laura England, Staff Writer

NEWS CORRESPONDENTS

- Patty Gross, Bedford, Blair, Huntingdon counties
Martinsburg 814-793-4256
- Robin Phillips, Berks County
Mohrsville 215-926-1261
- Jane Bresee, Bradford County
Ulster 717-358-3346
- Beth Hemminger, Cumberland, Franklin and Perry counties
Newville 717-486-5322
- Sally B. Bair, Lancaster County
Columbia
- Joyce Bupp, York County
Seven Valleys
- Nancy Kunick, Crawford & surrounding counties
Centerville 814-694-2571

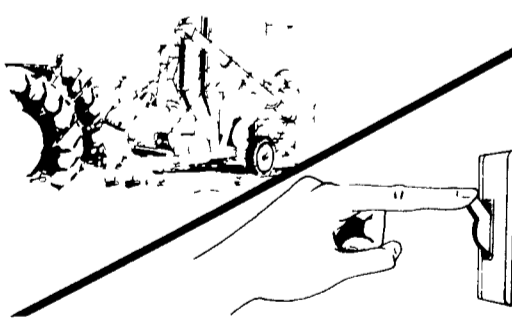
Subscription Price
\$7.50 per year, \$13.00 2 years
\$14.00 per year outside of
PA NJ MD DE NY VA & WV

Established November 4, 1955
Published every Saturday
by Lancaster Farming, Lititz, PA
Second Class Postage paid at
22 E. Main St.
Lititz, PA 17543 ISSN0023/7485

For address change form or new subscription see Mailbox Markets

Members of Newspaper Farm Editors Assn.,
Pa. Newspaper Publishers Association,
and National Newspaper Association.
Represented National by
J.L. Farmakis, Inc.
#203-966-1746

WINTER JOYS?



Flip A Switch....

Grind, Mix And Deliver Your Feed Automatically With A



FOR MORE INFORMATION, CALL OR WRITE TODAY:



automatic farm systems

608 Evergreen Rd.
Lebanon, PA 17042
(717) 274-5333



Two Ways To Improve Your Profit Picture XL & DK

Two layers with distinctly different characteristics From two separate research programs
You don't have to buy from two different companies to get the two top layers on the market
The XL shows excellent production under many management conditions The DK responds best to finely tuned, close management
DEKALB Layers are bred to possess the economic traits most applicable to your operation You do have a choice The high productivity XL or the high efficiency DK



Moyer's CHICKS, INC.

DEKALB BROWN & WHITE EGG LAYERS

Quakertown, PA 18951 (215) 536-3155

HUBBARD WHITE MT BROILERS