

MF introduces tillage tools

DES MOINES, Ia. — Massey-Ferguson has introduced three new tillage implements designed to meet farmers' fall tillage equipment needs. The new implements include the MF 144 moldboard plow, the MF 115 conservation coulters chisel and the MF 133 chisel plow.

MF 144 Moldboard Plow

Designed for operation with most tractors in the 60 plus hor-

sepower range, the MF 144 moldboard plow is available with 3 to 7 bottoms for semi-mounted hitching and with 5 to 18 bottoms for pull-behind use. In-furrow or on-land hitching is provided to match the width of cut to tractor rear wheel spacing.

The MF 144 is available with economical shear bolt beams for use in rock-free areas. Optional automatic spring reset beams,

with the unique ability to float over sloping rock surfaces, provide non-stop plowing in stump or rock infested fields. The spring reset model features 33 inch vertical clearance from the tip of the share to the bottom of the frame, while the shearbolt beams provide 35-inch clearance.

The 31 1/2-inch fore and aft stagger of the beams combines with the vertical clearance to provide a generous tunnel for corn stalks and trash to pass through.

Eighteen-inch bottoms, available in general purpose, high speed and deep tillage configurations, permit plowing down to 12-inches deep at speeds up to six miles per hour.

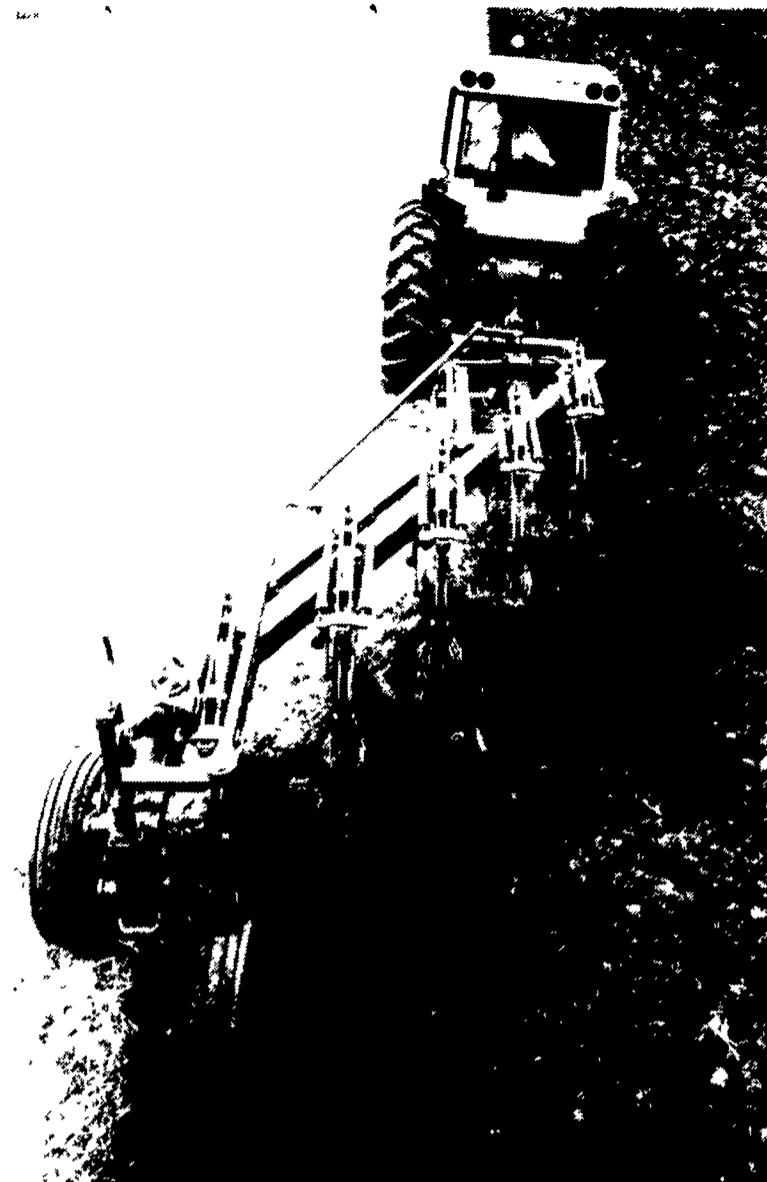
A high strength six-inch square tubular fore and aft frame provides a strong backbone to ensure bottom alignment. Wide spaced pivots on two and three section hinged models reduce twisting between sections and provides accurate trailing. Tandem walking beam land wheel axles provide adequate floatation for uniform plowing depth and reduce shock loading due to ditches and obstructions.

Conservation Coulters Chisel

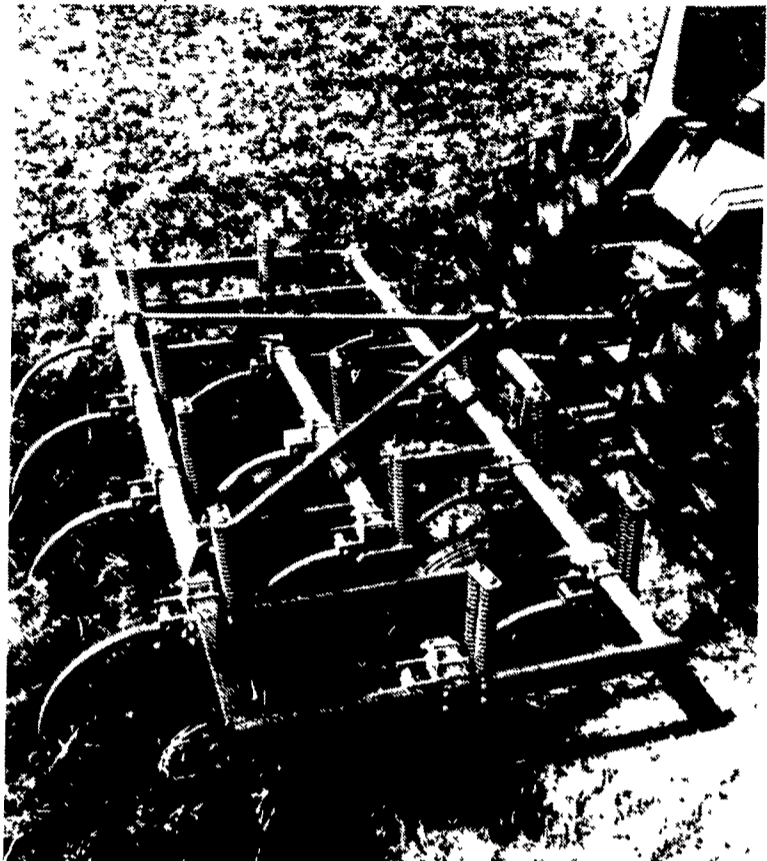
The MF 115 Conservation coulters chisel meets farmer growing need for conservation tillage equipment. The need to conserve soil, moisture, fuel and operator time during fall tillage has created a demand for the MF 115.

Build with a heavily weighted frame for better soil penetration, the MF 115 is especially effective in heavy corn trash conditions.

MF 115's 4x4-inch square tube frame is packed with metal punchings, giving it more weight added than any other unit on the



The MF 144 Moldboard Plow is equipped with 18-inch bottoms in different configurations and sizes to meet individual preferences and tractor capabilities.



The MF 133 Chisel Plow has shanks spread over the four-bar frame, creating a 36-inch rank spacing between shanks and allowing for work in trashy fields with less plugging.

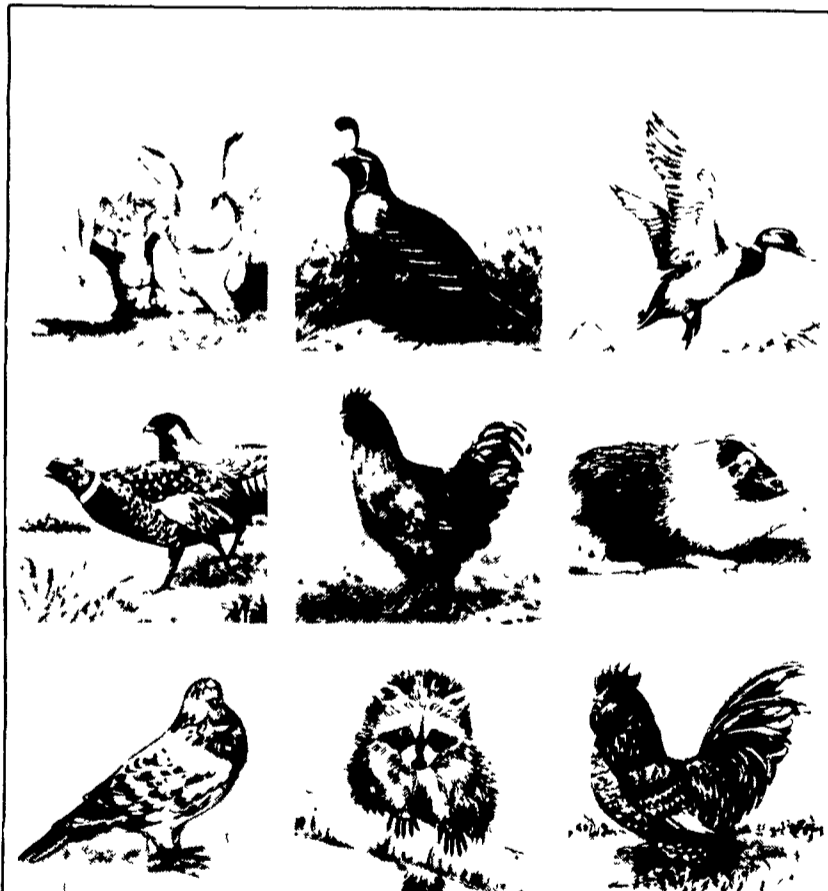
market. With this extra weight, the MF 115 can work in heavy trash and tough soil conditions without riding out of the ground.

The welded square tubular

frame is stronger than bolted frame units, reducing repair time and providing longer life.

Both the main frame and the 1

(Turn to Page D11)



Find the one Safeguard equipment can't protect!

It's impossible. Because whether you raise rabbits, pheasants, chickens, quail—or any other type of small animal or gamebird—Safeguard products provide lifelong protection.

There's the economical, modular Series 1200 cage. Or the rugged, space-saving Model 190 multi-stacking enclosure system. Feeders, drinking valves and countless other accessories. Plus 100 ft. rolls of galvanized wire mesh for the do-it-yourself-er.

They all reflect Safeguard's engineering and design philosophy—to help your

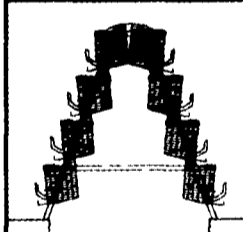
animals and birds thrive in a sanitary, protected environment.

Why not visit the Safeguard factory showroom? In the Earland Industrial Center, just off Rt. 23 east of New Holland. Or write for your free copy of the new 1983 Safeguard catalog. Safeguard Products, Inc., 114-116 Earland Drive, New Holland, PA 17557. Open Week days 7:30 AM to 4:30 PM • Saturdays 7:30 AM to 11:30 AM.

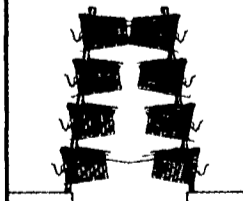


Small animal, gamebird and poultry equipment

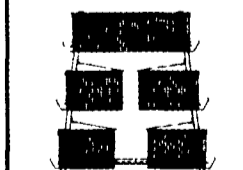
Fast track to egg cost reduction



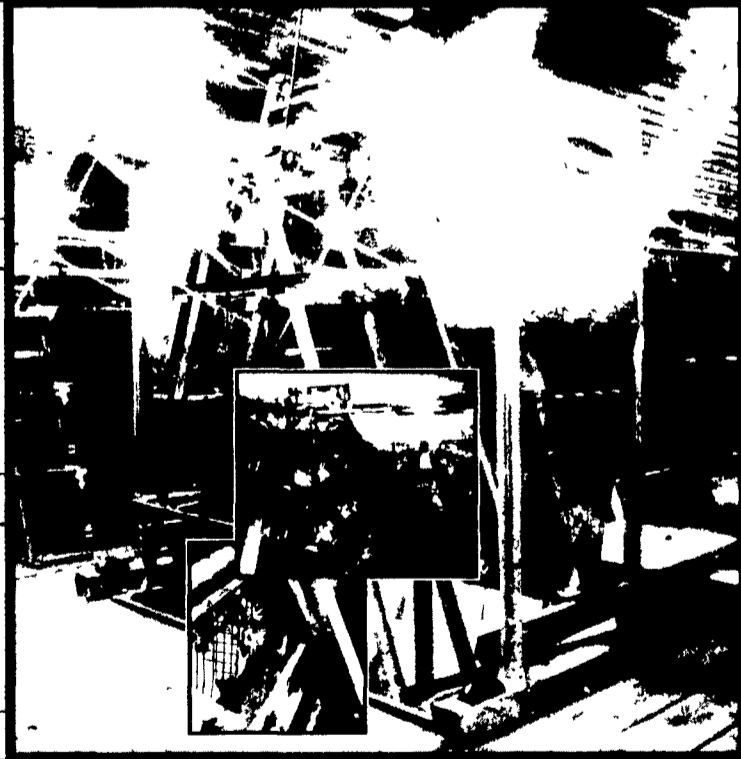
Shallow PYRAMID - 3 or 4 high



SSS System - 3 or 4 high



Brood Grow - 3 or 4 high



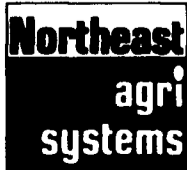
Chore Time's ME-ALMASTER FeedKar traveling feeder can help you get your egg costs on track. Here's how:

1. The typical chain feeder uses 1 1/2 hp to feed each cage tier - 6 hp for a 4 high. Our hopper system traveling on tracks is pulled by a cable using only 1/2 hp - a 95% energy reduction!
2. Cuts feeder maintenance and labor costs to virtually zero. You know what a chain feeder costs to maintain!
3. Evens out egg production from

one end of the row to the other - birds at the front can "highgrade" the feed.

We'd like to talk to you about the other ways the nearly 200 feeders we've sold are helping owners. Our FeedKar is now standard on all Chore Time brood grow and layer cages, our famous shallow PYRAMID and new deep PYRAMID, our 3 and 4 high SSS.

Find out more about the FeedKar - plus our line of cage systems and the Chore Time "total package" of feed bins, auger ventilation and waterers.



NORTHEAST AGRI SYSTEMS, INC

P.O. Box 187
Fitchville, CT 06334
Phone (203) 642-7529

Local Representative
DAVID NEWMAN
(717) 299-9905

