

# Livestock market and auction news



## Virginia Auction Summary

January 5-11

Report supplied by VDA

Total of Va. Weekly Feeder Cattle Auction Receipts: 6,158.

TREND: Steady to \$2 lower to as much as \$3 higher at the close.

Southwestern, Va.

Auction Summary

January 5-11

STEERS: 300-500 lbs. Medium 1 54.00-67.00; Large 1 57.50-59.00; Small 1 50.00-63.00. 500-700 lbs. Medium 1 56.50-64.00; Large 1 58.00-66.00; Small 1 49.00-60.50. 700-1000 lbs. Medium 1 56.00-63.50; Large 1 50.00-65.00; Small 1 50.00-58.50.

HEIFERS: 300-500 lbs. Medium 1 44.00-43.50; Large 1 46.00-53.25; Small 1 40.00-53.00. 500-700 lbs. Medium 1 43.00-52.50; Large 1 40.40-53.50; Small 1 38.50-50.50; 700-900 lbs. Medium 1 40.00-51.25; Large 1 37.00-51.50; Small 1 41.50-43.00.

Northern Va.

Auction Summary

January 5-11

STEERS: 300-500 lbs. Medium 1

52.00-65.50; Large 1 59.00-63.50; Small 1 51.50-62.00. 500-700 lbs. Medium 1 51.50-64.50; Large 1 55.50-60.00; Small 1 48.00-58.57. 700-1000 lbs. Medium 1 52.50-60.40; Large 1 48.50-60.40.

HEIFERS: 300-500 lbs. Medium 1 42.50-54.50; Large 1 46.75-54.00; Small 1 37.00-49.00. 500-700 lbs. Medium 1 40.00-53.50; Large 1 45.00-53.50; Small 1 41.00-49.50. 700-900 lbs. Medium 1 45.00-47.00.

Southeast Va.

Auction Summary

January 5-11

STEERS: 500-700 lbs. Medium 1 54.00-62.00; Large 1 56.50-62.00; Small 1 55.00-62.00. 700-1000 lbs. Medium 1 57.50-61.00; Large 1 58.00-63.50; Small 1 55.00-62.50. 700-900 lbs. Medium 1 59.75-61.00.

HEIFERS: 300-500 lbs. 50.00-51.00; Large 1 47.00-54.00; Small 1 47.50-50.50. 500-700 lbs. Medium 1 45.00-47.00; Large 1 45.00-49.75. 700-900 lbs. Medium 1 44.00-45.00.

## Shenandoah Valley Livestock

Harrisonburg, Va.

Saturday, January 7

Report supplied by auction

FEEDER CATTLE: Steers: M&L-1 300-500 lbs. 54.00-64.50; 500-700 lbs. 54.00-60.00; 700-1000 lbs.

54.00-58.75; Holstein 300-1000 36.00-42.50. S-1&M&L-2 300-500 lbs. 52.00-58.50; 500-700 lbs. 47.00-53.50; 700-1000 lbs. 46.00-54.50. Feeder Bulls: M&L-1 300-500 lbs. 55.00-59.50; 500-700 lbs. 44.00-52.00. S-1&M&L-2 300-500 lbs. 49.50-53.00; 500-700 lbs. 45.00-50.00. Heifers: M&L-1 300-500 lbs. 42.50-54.50; 500-700 lbs. 44.50-49.25. S-1&M&L-2 300-500 lbs. 38.50-43.50; 500-700 lbs. 38.00-42.50. Stock Cows: Baby Calves 20.00-82.50, mostly 35.00-65.00.

SLAUGHTER CATTLE: Heifers-Choice 53.00-55.50; Good 2-3 50.50-51.75.

SLAUGHTER COWS: Utility & Commercial 2-4 30.00-37.50; Canner & Cutters 1-3 24.00-30.00.

SLAUGHTER BULLS 1 & 2 38.75-45.25.

LAMBS: High Choice & Prime 61.25; Choice 57.50; Feeder Lambs Choice 55.25; Slaughter Ewes 17.00-22.25; Head Ewes 22.00-28.00.

HOGS: US 1-3 200-240 lbs. 50.50. Sows 1-3 35.00-48.00. Boars 30.50.

VEAL: Choice & Prime 67.00-74.00; Good 56.00-65.00.

SLAUGHTER CALVES: Good & Choice 46.50-53.50.

## Keister's Middleburg Auction

Middleburg, Pa.

Tuesday, January 10

Report supplied by PDA

CATTLE 278: Compared with last Tuesday's market, slaughter steers 1.00-2.50 higher. Slaughter cows 2.25-3.50 higher. Choice 2-4 1050-1340 lbs. slaughter steers 65.25-69.00, High Good to Low Choice 64.00-65.25, Good 60.00-64.00, Standard 50.00-56.00, Utility 38.00-48.00. Choice slaughter heifers 59.50-67.50, few Good 56.00-57.50. Breaking Utility & Commercial slaughter cows 35.00-39.00, Cutter & Boning Utility 33.50-37.50, Canner & Low Cutter 29.00-33.50, Shells down to 25.00. Yield Grade #1 1150-2035 lbs. slaughter bulls 45.00-51.50, few #2 870-1300 lbs. 40.00-44.25.

FEEDER CATTLE: Few Medium Frame #1 400-600 lbs. feeder steers 48.00-53.00.

CALVES 189: Few Choice vealers 74.00-90.00, few good 56.00-72.00, Standard & Good 75-100 lbs. 40.00-49.00, utility 60-85 lbs. 30.00-42.00.

FARM CALVES: Holstein Bulls 90-125 lbs. 52.00-77.00.

HOGS 518 (1-9-84) Barrows and gilts steady to 25 cents lower. US

No. 1-2 210-235 lbs. barrows and gilts 52.00-53.50, few 54.00, No. 1-3 200-250 lbs. 51.25-52.00, No. 2-3 190-270 lbs. 49.25-51.25.

HOGS 65: (Tues. 1/10/84) No prices quoted. US No. 1-3 400-600 lbs. sows 44.00-48.00, No. 2-3 275-600 lbs. 38.50-44.00. BOARS 30.00-37.00.

FEEDER PIGS 338: US No. 1-3 20-35 lbs. feeder pigs 10.00-18.00 per head, No. 1-3 40-70 lbs. 18.00-27.00 per head, No. 1-3 125-145 lbs. 36.00-38.00 per hundredweight.

SHEEP 27: Choice 85-105 lbs. woolled slaughter lambs 50.00-64.50, few Good 75-100 lbs. 45.00-55.00.

GOATS: Few Large 25.00-41.00 per head.

## New Holland Sales Stables

Friday, January 6

Special Sale of Work Horses,

Driving Horses and Mules

408 head.

Two lds. work horses, Tennessee, pairs, 2125.00-2800.00; singles, 775.00-925.00.

Driving, Illinois, 625.00-1085.00.

Iowa work horses, pairs, 1950.00-

2275.00; Singles, 800.00-1200.00.

Kentucky drive, 1200.00-1450.00.

North Carolina drive, 500.00-

1000.00.

New York drive, 585.00-1250.00.

Local driving, 375.00-1050.00.

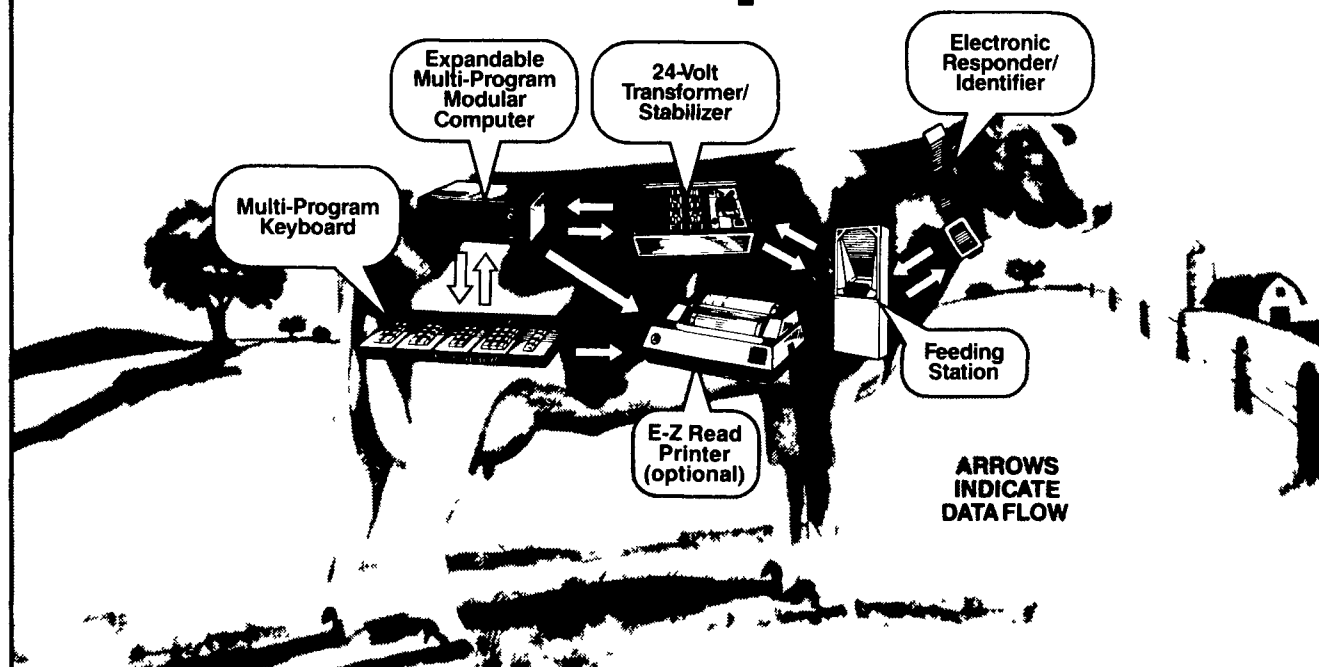
Local mules, pairs, 1250.00-

2100.00; singles, 550.00-750.00.

Work horses, pairs, 1050.00-

2450.00; singles, 475.00-1200.00.

# At Agway, Cows Have Personal Computers, Too



## The Agway/Universal Computerized Feeding System lets you increase milk production without adding a single cow to your herd

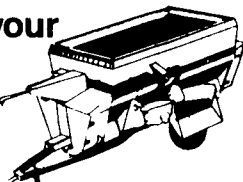
This system is the most advanced method for improving feeding efficiency. Allows free stall operators to feed each cow according to her production and body weight requirements. Avoids overfeeding low producers and underfeeding high producers, which means more profits for you.

This system gives you:

- individual cow feeding capability
- timed and measured portions
- no more feed stealing
- unhurried feeding
- daily consumption data
- "off feed" alert
- complete breeding/calving/lactation management program (optional)

### TMR—the basis of your feeding program

Agway offers the Schwartz Mixer/Feeder to properly prepare total mixed rations. Accurately and quickly weighs



and mixes grain, forage and other nutrients for a scientifically balanced blend. Available in portable or stationary models.

### NO NEED TO BUY, LEASE IT!

No big initial investment when you lease through Telmark® Agri-Lease®. Check Agway for details.

Find out now how you can have a better managed, more profitable operation with the most advanced feeding system on the market today. Contact your Agway Farm Systems Salesperson at the nearest Agway store or mail in this coupon.

I would like more information on:

- ( ) Computerized Feeder
- ( ) Schwartz Mixer/Feeders
- ( ) Agri-Lease Program

Send to: **AGWAY**  
Agway Inc  
Distribution Services  
Box 4933  
Syracuse, NY 13221  
Or Call: 477-7313

Name \_\_\_\_\_  
Address \_\_\_\_\_  
Town \_\_\_\_\_ State \_\_\_\_\_  
Zip \_\_\_\_\_ Phone \_\_\_\_\_

LF 1/14/84

## Green Dragon Livestock Sales

1 Mile North of Ephrata, PA



## COWS COWS COWS

### BUYERS FROM 3 STATES

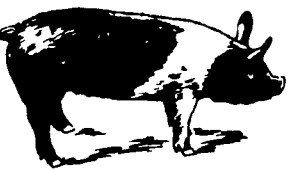
Regular consignments from Bob Kennedy & Ed Stover plus 15 other local consignors. Lots of good Northern Feeders and Stockers.

### SALE EVERY FRIDAY

Bulls, Steers, Slaughter Cows, Lambs and Veal Calves  
11:00 A.M. - Beef Sale Stockers & Feeders 200 to 250 each week.  
12:30 P.M. - Dairy Cows  
7:00 P.M. - Small Animal Sale

For Special Sales and Herd Dispersals on the farm or at our barn or other market information call: Office 717-733-2444.

WALTER H. RISSER, Proprietor



## EMERY'S BUYING STATION

### OPEN TO RECEIVE YOUR MARKET HOGS

AT THE GREEN DRAGON MARKET  
RD 4, EPHRATA, PA 17522  
1 MILE NORTH OF EPHRATA  
ON NORTH STATE STREET.

HOURS  
MONDAY, TUESDAY, and WEDNESDAY  
6:00 A.M. to 11:30 A.M.

215-458-5677 Residence  
717-733-9648 Office

YOU ARE PAID FOR YOUR HOGS IMMEDIATELY

Ken & Lois Emery, Proprietors