

Livestock market and auction news

Su City Cattle

Thursday, January 12
Report supplied by USDA

Receipts This Week 10,400
Last Week 9,000
Last Year 10,500

Compared with the previous Wed., Slaughter Steers and Heifers 1.50 to mostly 2.00 higher. Supplies appear very current, due to severe December weather. Cows 2.00-4.00 higher, extremes 5.00 higher on

Heiferettes. Bulls 1.00-2.00 higher. Feeder Cattle 350-600 lbs. 2.00-3.00 higher; 600-900 lbs. 2.00 higher. More normal January weather found an influx of producer buyers and excellent demand, particularly for the lighter weight Feeders that found a suppressed market in December. Average weight of Slaughter Steers this week 1127 lbs. compared with 1145 lbs. previous week and 1178 lbs.

year ago Quality of Slaughter Steers and Heifers below par, estimated near 75% Choice. Cows totaled 820 head, mostly selling Monday afternoon at auction. Feeder Cattle accounted for 4000 head and balance of supply Slaughter Steers and Heifers. 33 loads of CME Feeder Cattle delivered this week.

SLAUGHTER STEERS: Choice 2-4, mostly 2-3, 1050-1340 lbs. 66.50-69.00, closing mostly 68.00-69.00 with limited tests in the upper range of quotes. Very firm undertone prevailed late in the week. Mixed Good and Choice 2-3, 1050-1200 lbs. 65.00-67.00, closing 65.50-67.00, at mid-week, several loads 1000-1050 lbs. returned to feedlot at 65.00. Few Good 64.00-65.00. Mixed Good and Choice and some Choice 1200-1250 lb. Holsteins 60.00, few Good 57.00-59.50. One load Utility and Standard Holsteins 52.00. Load Mixed Holstein Steers and Heifers 1150 lbs. 57.00.

SLAUGHTER HEIFERS: Choice 2-4, 950-1150 lbs. 64.50-66.00, closing 65.00-66.00. 900-950 lbs. closing 64.00-65.00. Mixed Good and Choice 2-3, 850-1050 lbs. 62.00-64.00. Good 60.00-62.00. Load Good 2-3, 1200 lb. Heiferettes 55.00.

SLAUGHTER COWS: Commercial 2-4, 850-1250 lbs

Heiferettes 52.50-55.50. YG 4, 1405 lbs. 46.25. Breaking Utility 2-3, Cows 33.50-36.50. Canner and Boning Utility 1-2, 33.00-35.75. Canner and Low Cutter 30.00-33.75.

SLAUGHTER BULLS: YG 1-2, 1365-1980 lbs. 40.00-46.75, high yielding individual 2295 lbs. 47.25; individual YG 3, 1710 lbs. 41.50.

Belleville Auction

Belleville, Pa.

Wednesday, January 11
Report supplied by PDA

CATTLE 135: Compared with last Wednesday's market, slaughter cows 4.00 higher Few Good and Choice holsteins 55.85-60.85. Breaking Utility and Commercial slaughter cows 36.85-40.00, couple 41.75, Cutter and Boning Utility 33.85-37.85, Canner and Low Cutter 30.00-34.50, Shells down to 27.00. Few Yield grade #1 1020-1855 lbs. slaughter bulls 40.50-48.00

CALVES 183: Individual Good vealer at 81.00, Standard and good 75-100 lbs 37.00-47.00, Utility 60-85 lbs 30.00-40.00

FARM CALVES: Holstein Bulls 90-125 lbs 50.00-107.00, mostly 80.00-100.00.

HOGS 258: Barrows and gilts 2.25 higher. US No. 1-2 215-245 lbs. barrows and gilts 52.10-53.75, No. 1-

3 215-260 lbs 48.00-52.75, lot No. 1-3 182 lbs. at 42.00. Few US Nos. 1-3 295-435 lbs. sows 33.00-39.00 Few Boars 26.00-29.75.

FEEDER PIGS 151: US No. 1-3 35-55 lbs. feeder pigs 18.00-28.50 per head, lot No. 1-3 140 lbs at 51.00 per head.

SHEEP 18: Few Good to Low Choice 65-110 lbs. wooled slaughter lambs 50.00-57.00. Few Slaughter ewes 14.00-22.00.

Few Holstein Dairy Cows 500.00-970.00 per head

New Holland Horse

New Holland Sales Stables
Monday, January 9

Report supplied by auction
Reported receipts of 175 head of horses, mules, and ponies.
Market: steady.

LOCAL

Better horses 350.00-500.00.
Driving horses 275.00-600.00.
Riding horses 200.00-325.00.
Lightweight killers 225.00-300.00;
Heavyweight killers 325.00-410.00.
Mares 35.00-50.00; Colts 10.00-20.00; Geldings 35.00-50.00.
Larger ponies 75.00-165.00.

Hamp-York Production Sale Sat. Feb. 4, 1984

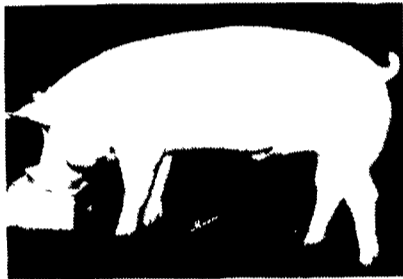
1 P.M. on the farm

40 Hamp & York Boars

75 Hamp & York & Cross Gilts 25 Bred Gilts

Boars will have SCANDATA

Fieldman - Jack Ficken Ringman - Randall Updike
Henry Holloway



Litter 122-6 sired by Chug

Litter 122-8 sired by Chug

You can buy with CONFIDENCE in our
SOUND PRODUCTION
SOUND HERD HEALTH
SOUND CUSTOMER RELATIONS

All pigs raised on concrete
No drugs in feed after pigs are
75 pounds
Brucellosis & PRV free herd

Negative TB tested
Treated for parasites

franklin feeser

Box 372, Taneytown, Maryland 21787
(301) 751-1287

"WE GUARANTEE WHAT WE SELL"
For further information write or call



ATTENTION YORK CO. FARMERS

Looking!!! For Quality
Hogs

Every Monday
HATFIELD PACKING CO.
BUYING STATION AT
SECHRIST SALES CO.
LIVESTOCK AUCTION
R.D. 1 Stewartstown, PA

.. Top Select Price on #1 & 2 Hogs 215 - 245 lbs.

.. We will receive your hogs from 6 A.M. until ???

.. Your hogs will be weighed & paid for immediately

.. There will not be a commission or yardage fee

.. You may call our office Monday morning for base price

.. Please give us a chance to market your hogs

FOR INFORMATION CALL
717-993-6130



BUTLER FOODS INC.

We will receive
your market hogs

* Our New Winter Hours*
8 AM - 1 PM

**Mondays, Wednesdays,
Thursdays & Fridays**

Located at the Vintage Sales
Stables, Paradise, PA

You will be paid immediately.

No commission or
yard fees deducted.

Reduced waiting time.

Premium prices are paid
for extra fancy hogs.

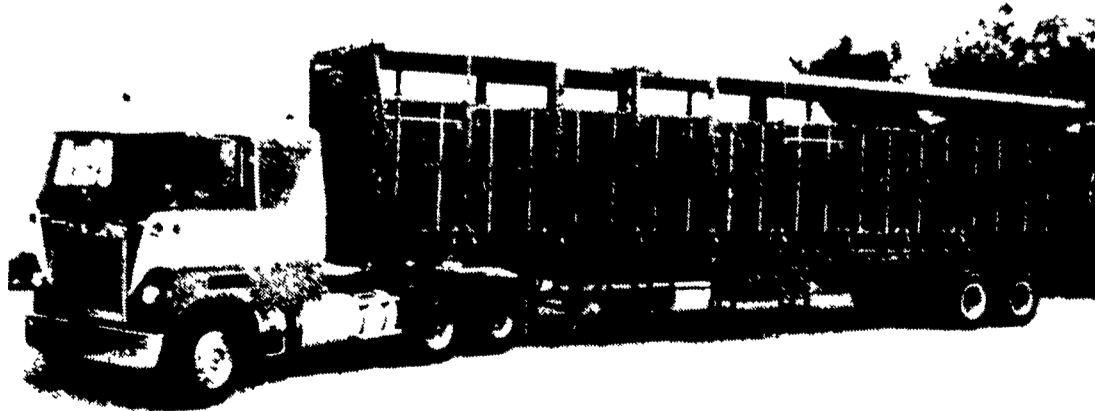
Call Ed Herrmann
for daily market quotations
717-442-4742

For quotations of next week's prices
call collect 215-488-7617

PA WATTS NUMBER 800-342-2249

LESS LABOR

VERY
SANITARY



LESS DOA'S

LESS COND.

Buyers of Leghorn Fowl

SECHLER'S POULTRY, INC.

Box G, Strausstown, PA 19559

SCOTT SECHLER

RICHARD SECHLER

NELSON LEGG

Please support



**FEEDER
PIGS
&
CATTLE**
Best of Quality
**BOYCE
LIVESTOCK CO., INC.**
Shelbyville, Tenn
615-294-5121
BOB BOYCE
615-294-5301

**BEEFALO
FOR SALE**
-Semen in stock
-1/2, 3/4, 7/8 animals
**BEEFALO
N & J**
4270
Quakerbridge Rd.
Princeton, NJ 08540
609-896-0336