

Yoder dominates Shorthorn

FARM SHOW — Phyllis R. Yoder of Main Street, Shoemakersville, Berks County, exhibiting "Pinesedge Alfair Carlden," captured the grand and senior championships in Milking Shorthorn open competition at the 68th Farm Show. The animal is an aged cow.

Another Yoder entry, shown by Samuel, won the reserve grand and reserve senior championships. The reserve champion, "Pinesedge Marie Miss Jill," is a 4-year-old cow.

The junior champion also was shown by Samuel Yoder. "Pinesedge Classic Rose" is a senior yearling heifer. Samuel Yoder won the premier breeder and premier exhibitor awards for the class.

Rachel Kline of Evans City Road in Mars, Butler County, exhibited "Rosey's Roxanne," a senior calf that won the reserve junior championship.

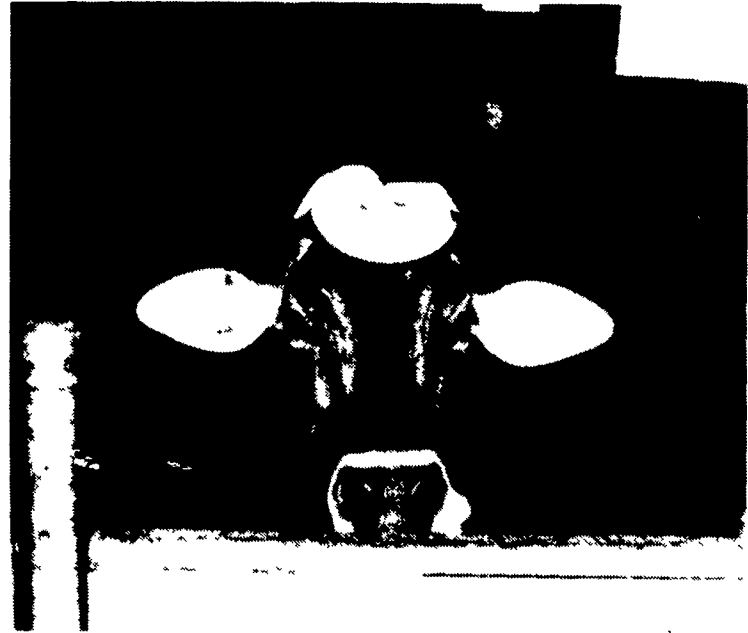
Milking Shorthorn - Youth Class
Brad Kerr of Brownsdale Road, Renfrew, Butler County, exhibited

the grand champion Milking Shorthorn female in the youth division at the 68th Farm Show. The champion, "P Monica's Sherry," is a senior yearling heifer. The animal also was judged the show's junior champion. Brad is a member of the Butler county 4-H Dairy Club.

No other champions were selected in Milking Shorthorn youth competition.

- MILKING SHORTHORN SHOW**
- Senior Calf**
1 Rachel Kline Mars
- Sr Year Heifer**
1 Samuel G Yoder Shoemakersville Brad Kerr Renfrew
- Youth Sr Yr Heifer**
1 Brad Kerr
- Jr Champion Female**
1 Samuel G Yoder
- Youth Jr Champion**
1 Brad Kerr
- Reserve Champion Female**
1 Rachel Kline
- 3 or 4 Dry Cow**
1 Samuel G Yoder
- 5 or Over Dry Cow**
1 Nedra Jo Yoder Shoemakersville
- 2 And Under 3 Cow**
1 Frederick R Yoder Shoemakersville
- 3 And Under 4 Cow**
1 Frederick R Yoder
- 4 And Under 5 Cow**
1 Frederick R Yoder

- 5 And Over Cow**
1 Phyllis R Yoder Shoemakersville
Champion Udder
- 1 Phyllis R Yoder**
Sr Female Champion
- 1 Phyllis R Yoder**
Sr Female Reserve Champ
- 1 Samuel G Yoder**
Female Grand Champion
- 1 Phyllis R Yoder**
Female Res Champion
- 1 Samuel G Yoder**
Youth Grand Champion
- 1 Brad Kerr**
Premier Breeder
- 1 Samuel G Yoder**
Premier Exhibitor
- 1 Samuel G Yoder**
Exhibitor Herd
- 1 Samuel G Yoder**



Captivating cow - this Brown Swiss cow owned by Windmill Farms, caught the attention of many visitors in the dairy barn of the Farm Show.

Ayrshire Show

(Continued from Page A21)

E. and D. Shetterly Keefer of Millersburg, won premier breeder and exhibitor awards.

Ayrshire Youth Classes

Debra Shetterly, Millersburg, exhibited the grand and senior champion in Ayrshire youth classes at the 68th Farm Show, "Sycamore Meade Champs Luvie," a 3-year-old cow. Debra is a member of the Upper Dauphin 4-H Dairy Club. Luvie was also named the grand champion at the Pa. Junior Dairy Show.

Lona J. Rader of Connoquenessing, Butler County, exhibited the reserve grand and reserve senior champion, "Ash Avenue Supreme," an aged cow. Lona is a member of the Butler County 4-H Dairy Club.

Debra Shetterly also showed the junior champion, "Sycamore Meade Locks Lovely, a senior yearling. The heifer was the open show's junior champion.

Heather Hernley of RD 2, Lebanon, Lebanon County, showed the reserve junior champion, "Green Brae Jamie," a junior calf. Heather is a member of the Northern Lebanon FFA Chapter. Heather was the 1983 Pa. Outstanding Ayrshire Youth.

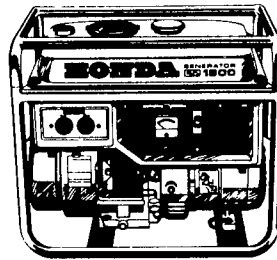
AYRSHIRE SHOW

- Junior Calf**
1 Heather L Hernley Lebanon 2 Harold R Kulp Pottstown 3 Heather L Hernley
- Youth, Junior Calf**
1 Heather L Hernley 2 Donna Shetterly Millersburg 3 Anthony J Spickler Mount Joy
- Senior Calf**
1 Wm & Wilda Kline Mars 2 Edward Kulp Pottstown 3 E & D Shetterly Keefer Millersburg
- Youth Senior Calf**
1 Mark Price Douglassville 2 Jeff A Lyons Onnoquenessing 3 Paul Dehart Evans City
- Jr Year Heifer**
1 E & D Shetterly Keefer 2 Wesley H Harding Jr Lebanon 3 Anita S Brommer Conestoga
- Youth Jr Yr Heifer**
1 Wesley H Harding Jr 2 Anita S Brommer 3 C Nelson Horning Denver
- Sr Year Heifer**
1 Debra Shetterly 2 Heather L Hernley 3 E & D Shetterly Keefer

- Youth, Sr Yr Heifer**
1 Debra Shetterly 2 Angela L Spickler 3 Anita S Brommer
- Jr Champion Female**
1 Debra Shetterly
- Jr Champion**
1 Debra Shetterly
- Reserve Jr Champion Female**
1 Wm & Wilda Kline Mars
- Reserve Jr Champion**
1 Heather L Hernley
- 3 or 4 Dry Cow**
1 Steven Shetterly Millersburg 2 Delaware Valley College 3 Kennard E Henley III Cochranville
- Youth, 3 or 4 Dry Cow**
1 Steven Shetterly 2 Dale M Gerhart Reinholds
- 5 or Over Dry Cow**
1 Pattice Ocker Creek Shippensburg 2 John Ocker III Shippensburg 3 Heather L Hernley
- Youth 5 or Over Dry Cow**
1 Larry L Gerhart Reinholds
- 2 And Under 3 Cow**
1 Harold R Kulp 2 Kennard E Henley III 3 Heather L Hernley
- Youth 2 to 3 Yr Cow**
1 Rebecca Alsdorf Cochranville 2 Kristina Esbenshade Quarryville 3 Max E Brommer Conestoga
- Ayrshire 3 And Under 4 Cow**
1 Debra Shetterly 2 Kennard E Henley III 3 Julie Lehman Wrightsville
- Youth 3 to 4 Yr Cow**
1 Debra Shetterly 2 Julie Lehman 3 Susan Gay Kulp Pottstown
- 4 And Under 5 Cow**
1 Harold R Kulp 2 Harold C Rader Jr 3 Angela L Spickler
- Youth 4 to 5 Yr Cow**
1 Harold C Rader Jr 2 Angela L Spickler 3 Wesley H Harding Jr
- 5 And Over Cow**
1 E & D Shetterly Keefer 2 William Ocker 3 Lona J Rader
- Youth 5 And Over Cow**
1 Lona J Rader 2 Heather L Hernley 3 Dale M Gerhart
- Champion Udder**
1 E & D Shetterly Keefer
- Sr Female Champion**
1 E & D Shetterly Keefer
- Youth Sr Champion**
1 Debra Shetterly
- Sr Female Reserve Champion**
1 Harold R Kulp
- Youth Reserve Sr Champion**
1 Lona J Rader
- Female Grand Champion**
1 E & D Shetterly Keefer
- Female Reserve Grand Champion**
1 Harold R Kulp
- Youth Grand Champion**
1 Debra Shetterly
- Youth Res Grand Champion**
1 Lona J Rader
- Premier Breeder**
1 E & D Shetterly Keefer
- Premier Exhibitor**
1 E & D Shetterly Keefer
- Exhibitor Herd**
1 John Ocker III 2 Harold R Kulp 3 E & D Shetterly Keefer

PORTABLE HONDA

GENERATORS,
WATER PUMPS
and
ENGINES



Power When & Where You Need It
600 - 6500 Watts
With Battery Chargers

SAVE WITH OUR CASH DISCOUNT
SALES, SERVICE & RENTALS
at

STOLTZFUS WOODWORK

Rt. 897 North, Gap, PA 17527

(717) 442-8972

Open: 7 AM - 6 PM, Mon.-Sat.

**IT'S A
HONDA**

We Ship
Honda Parts
P.P.

BUY CHEAP

YOU CAN GET JUST WHAT
YOU PAY FOR...

IT'S UNWISE TO PAY TOO MUCH...

It's unwise to pay too much... but it's worse to pay too little. When you pay too much, you lose a little money... that is all. When you pay too little, you sometimes lose everything, because the thing you bought was incapable of doing the thing it was bought to do. The common law of business balance prohibits paying a little and getting a lot — it can't be done. If you deal with the lowest bidder, it is well to add something for the risk you run. And if you do that, you will have enough to pay for something better.

— John Ruskin

"PROFESSIONALLY DESIGNED
IRRIGATION AND WASTE
WATER SYSTEMS"

EECO, INC.

4021 N. 6th St. Harrisburg, Pa. 17110
717-238-9423

See our Pump and Water-Reel ad under Farm Equipment in the classified section.



STRAY VOLTAGE SOLUTION



The **HAMMOND TINGLE VOLTAGE FILTER** is a new development in the technology of stray voltage reduction. The **TINGLE VOLTAGE FILTER** has recently been installed on the following dairy farms.

BEN JACKSON FARM
COLUMBIA CROSS ROADS, PA.
Before installation had 2.5 volts at peak times, this was reduced to .04 volts with installation of the Tingle Voltage Filter

WILLIAM EICK FARM
COLUMBIA CROSS ROADS, PA.
Before installation had 3.5 volts at peak times was reduced to .14 volts with installation of the Tingle Voltage Filter

The **TINGLE VOLTAGE FILTER** is safe, effective, permanent, inexpensive and are completely maintenance free. If installed with Dairylands Stray Voltage Indicator permanently will show electrical faults before they become hazardous.

Dealers Wanted: To sell and install this fast moving, much needed product in your areas.

Qualifications: Must have complete electrical knowledge of dairy farm equipment, and electrical service entrance.

Please send qualifications and credit references to your Dairy Equipment Specialist.

Dairyland Sales & Service, Inc.

R.D. 3, Box 43, Troy, PA 16947

PH: (717) 297-4128

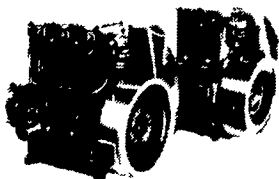
SMUCKER'S SALES & SERVICE, INC.

RD #2, BOX 21
NEW HOLLAND, PA 17557



12-36 bhp

**TS2 / TS3
AIR
COOLED
DIESELS**



**FOR PROMPT SERVICE CALL
717-354-4158 OR IF NO ANSWER
CALL 717-354-4374**