

Dairymen

(Continued from Page A16)

the Pa. Holstein Association. He was director of the Pa. Dairymen's Association, York County Farm and Home Administration and the York County DHIA.

The Charles E. Cowan Award, established nine years ago in memory of a long-time leader in Pa. Dairymen's Association activities, recognizes dairy farmers who have made outstanding contributions to the state's largest agricultural industry.

William H. Folwell III, extension visual aids specialist at Penn State University, was named recipient of the 1983 Pa. Dairymen's Cooperative Extension Service Award for "valuable and noteworthy contributions to the state's dairy industry."

Folwell, who owned and managed a dairy farm in the 1950's, produced 16 Penn State

dairy films focusing on 4-H fitting and showing, mastitis prevention, milk processing and sampling and testing procedures. He also prepared numerous slide sets on feeding and management of dairy calves and heifers.

A native of West Grove, Folwell has been a member of the Penn State College of Agriculture faculty for 31 years.

Harold Probst of Bart, Lancaster County, received the 1983 Superior Supervisor Award from the Pa. DHIA "for outstanding achievement and professionalism as a DHIA supervisor in the commonwealth." Probst was presented a plaque and \$100.

Probst has over 26 years of experience as a supervisor and provides extremely accurate and efficient service for the 125 dairymen in his unit. Last year he handled more than 54,000 performance records with only 34 errors. He is responsible for 1,500 farm visits each year.



John Atwell, right, USDA deputy administrator, presents to Secretary of Agriculture, Penrose Hallowell, a certificate declaring Pennsylvania Brucellosis free.

Precast Concrete UPRIGHT BUNKER SILO

Featuring a single component design for fast installation and completion. The sections bolt together and the use of a sealant placed in the tongue and groove creates a sealed wall surface.

The sections may be dismantled and relocated. Customers may select any length or width in 5' 2" increments.

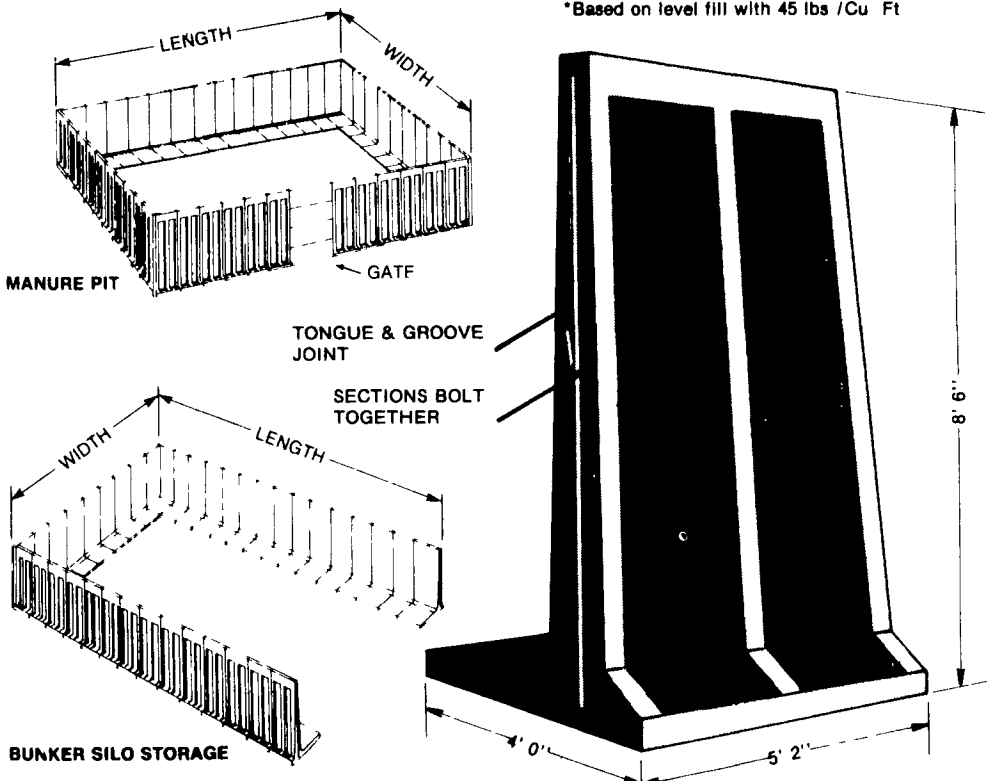
A special center wall is available to permit placing bunker silos side by side or dividing existing trench silos.

In addition to silage storage, these upright units may be used as retaining walls or manure pits.

TONNAGE TABLE FOR 8 FT. SIDEWALLS*

Width \ Length	20'	30'	40'	50'
60'	215	323	432	540
70'	251	376	504	630
80'	287	431	578	720
90'	323	485	648	808
100'	359	539	720	900
110'	395	593	792	989
120'	431	648	864	1080
130'	467	688	936	1170
140'	503	755	1008	1260
150'	539	808	1080	1350

*Based on level fill with 45 lbs / Cu Ft



★ Leasing Available! ★

EARLY ORDER DISCOUNTS NOW IN EFFECT

Sollenberger Silos Corp.

A Nitterhouse Company
Box N Chambersburg, PA 17201 [717] 264-9588
A Producer of Quality Concrete Products Since 1923

BEACON KALF AD-LIB

Designed to duplicate Mother Nature.



Mother Nature knows that calves need a flexible feeding time. Now Beacon has developed an acidified milk replacer system that duplicates her way of nursing.

Designed for self-feeding calves, it's an all-milk formulation with a mix of 20% protein and 14% fat. You'll appreciate the ease with which it mixes in cold water and the fact that it stays fresh for 3 to 5 days. It reduces the risk of nutritional scours, and it lowers housing costs because it allows grouping up to 5 calves.

Your calves will respond to Kalf Ad-Lib with improved weight gains, feed conversion and calf "livability".

Amazing research results prove the merits of cold Kalf Ad-Lib feeding.

	Conventional Milk Replacer*	Beacon KALF AD-LIB*
No Calves	130	141
Mortality**	8	8
Birth	104 8 lbs	105 0 lbs
7 days	105 2	111 1
14 days	107 0	123 3
21 days	112 2	138 1
28 days	119 6	153 6
35 days	129 8	161 7
Avg Daily Gain	71	1 62
Feed Conversion F/G	2 24	1 51

*All Milk Formulas **Sale Barn Calves

See for yourself! Start 'em right! Ask your Beacon dealer or advisor for additional information



York, PA

Ph: 717-843-9033

- CALL YOUR BEACON DEALER TODAY -

H. JACOB HOOBER
Intercourse, PA
717-768-3431

CLARK SUPPLY CO.
Rising Sun, MD
301-658-6464

H.O. ANDREWS & SONS, INC.
McVeystown, PA
717-899-6772

NEW FREEDOM FARM & HOME SUPPLY, INC.
New Freedom, PA
717-235-3606

MURPHY & CLOUSE FEED MILL
Carlisle, PA
717-249-2963

NOLT'S MILL
Witmer, PA
717-393-1369

MARTIN'S ELEVATOR, INC.
Hagerstown, MD
301-733-2553

ROGER L. SANER
Thompsontown, PA
717-535-5307

SPENCER'S MILLING SERVICE
Clayton, DE 19938
302-653-8011

MCCRACKEN'S FEED MILL, INC.
Manheim, PA
717-665-2186

STEVENS FEED MILL, INC.
Stevens, PA
215-267-2150

NORTH GLADES FEED, INC.
Keymar, MD
301-775-7981

RICHARD B. KENDIG
Special Accounts Representative
Phone 302-478-3058

BYRON STUART
Beacon Advisor
717-792-9564

ISAAC K. LEFEVER
Beacon Advisor
Phone 215-267-7042

R.E. RUDISILL
Beacon Advisor
Phone 717-854-2281

RAY BRANAS
Beacon Advisor
717-843-4515

WILLIAM R. KORMAN
Beacon Advisor
412-349-1829

Beacon Milling Company, Inc.

We're Employee Owned. That's Why We Shine.