

York conservationist explains Codorus project

YORK — Some of the finest agricultural land in Pennsylvania is located in the watersheds of the South and East Branches of the Codorus Creek in York County.

"Protecting that land and the waters of Codorus Creek from accelerated soil erosion and sediment will be the focal point of my interest and concern from now on," says SCS Conservationist, Lee B. Bentz, in York.

His efforts are part of the Mason-

Dixon Project, a concerted effort of the U.S. Department of Agriculture and the Maryland and Pennsylvania Conservation Districts to clean up the Chesapeake Bay.

The York County Conservation District "targeted" the South and East Branches of the Codorus for "stepped up" conservation assistance because of the critical role agriculture and the stream play in the local economy. The

creek, in turn, flows toward and becomes part of the larger economic arena of the Chesapeake Bay.

"Admittedly," states Bentz, "the total contribution of water and pollutants from the Codorus to the Bay and its overall problems is small, but the point is, we must start somewhere and the logical place to start is literally at the "grass roots" where those first raindrops fall."

"Sediment (misplaced eroded soil) is the largest water pollutant by volume today," says Bentz, "and lets face it, pollution is where you find it! A raindrop does not differentiate between washing soil off an unprotected farm field and an urban housing construction site, or a manure covered barnyard and a bare roadbank. Eventually it all can end up as sediment (pollution) in the Codorus and eventually the Chesapeake Bay."

"Everyone in the York

Metropolitan-Agricultural community has an economic stake in the health of the East and South Branches of the Codorus Creek. If the community works together to clean up our own "backyard," the quality of the water in the Codorus can and will improve. If our example is repeated in hundreds of similar watersheds to the Chesapeake Bay, then together we can make a difference on individual farms, local communities, and the region as a whole," he said.

The Soil Conservation Service and the York County Conservation District have commended the conservation efforts of those landowners who are already on this "conservation team" and urge their continued support on the land and among their neighbors.

"Our aim," says Bentz, "is to reach those landowners who for one reason or another are not aware of or have never been ex-

posed to the conservation farming land treatment story. These lands need a basic conservation plan."

Other landowners may have conservation plans developed 10, 20 or more years ago that do not accurately reflect current operations. Conservation systems applied years ago may be inadequate to handle the higher intensity level of today's farming operations. These plans need to be updated to meet current production demands.

Applications for conservation assistance are available at the District offices in the York County Home Complex, 122 Pleasant Acres Road, York, Pennsylvania, 17402. Telephone 755-2966 or 755-0406.

Bentz reminds landowners that this is a voluntary effort on their part and that they are not bound to anything more than to listen and reasonably discuss land management.

Lebanon ASCS

reports committees

LEBANON — The results of the election of the county and community committees have been announced by the Lebanon County ASCS Office.

The county committee includes Edward Krebs, R1, Grantville, Chairman; John Stick, R6, Lebanon, Vice Chairman; Henry Royer, 1401 Prescott Rd., Lebanon, Regular Member; Kenneth Blatt, R1, Jonestown, First Alternate; Mark Hitz, 2105 S. 5th Ave., Lebanon, Second Alternate.

Community Committee results:

Community No 1 Heidelberg and Millcreek Townships Vernon Balmer R2 Myerstown Chairman Walter Heisey R1 Newmansstown Vice Chairman Donald Bollinger R1 Newmansstown regular member Warren Bucher R2 Myerstown First Alternate Eugene Hoffman R1 Newmansstown Second Alternate

Community No 2 South Lebanon North Cornwall West Cornwall Cornwall Boro North Lebanon Townships Mark Hitz 2105 S 5th Ave Lebanon Chairman Cyrus Bomberger 2075 Colebrook Rd Lebanon Vice Chairman Frank Reist 53 Fox Road Lebanon Regular Member Phil Arnold 300 Grubb Ave Lebanon First Alternate Ivan Parker 1501 Fonderwhite Rd Lebanon PA Second Alternate

Community No 3 South Annville South Londonderry North Annville North Londonderry Townships John Alger Box 54 Campbelltown Chairman Elvin Hostetter RR 3 Annville Vice Chairman Adam Brandt RR 4 Lebanon Regular Member Timothy Tyson RR 2 Palmyra First Alternate

Community No 6 Union Swatara East Hanover Cold Spring Townships Kenneth Blatt R1 Jonestown Chairman Thomas Shuey R2 Annville Vice Chairman Jeffrey Werner R1

Jonestown Regular Member Clair Wagner R1 Pine Grove First Alternate David Hostetter R2 Annville Second Alternate

Community No 8 Jackson and Bethel Townships Ray Sattazahn R6 Lebanon Chairman Dale Maulfair R1 Jonestown Vice Chairman Mark Hunsicker R5 Myerstown Regular Member Earl Ziegler R1 Fredericksburg First Alternate J Clyde Bowman 1261 College St Myerstown Second Alternate

Reception

to honor Ace

UNIVERSITY PARK — An informal reception to honor the retirement of Don Ace as Penn State Extension dairy specialist will be held from 3 to 5 p.m. on Friday, Jan. 27 in Room 301 of the Agricultural Administration Building.

A short program is planned from 3:45 to 4:15 p.m. to provide an opportunity for groups with which Ace has been associated to offer their thanks. Letters of congratulations and thanks may also be sent to Steve Spencer, 8 Borlund Lab, University Park, 16802.

COMPLETE FARM PAINTING



We Use Quality Paint
AERIAL LADDER EQUIPMENT

- Modern and Efficient Method
- Reasonable Prices
- Spray-On and Brush-In Method
- Sandblasting if Necessary

For Free Estimates Write or Call:

ESH SPRAY PAINTING

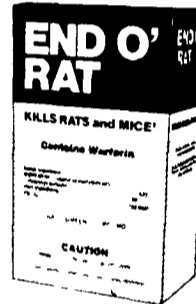
717-687-7007 or 687-8262

SPRAY-ON AND BRUSH-IN PAINTER

637 Georgetown Rd.
Ronks, PA 17572

Kills rats and mice!

End O' Rat works fast to kill unwanted rats and mice. Completely safe for use around the home, farm or factory buildings. End O' Rat is specifically formulated to appeal to the natural feeding habits of rats and mice. And End O' Rat contains Warfarin— for proven effectiveness. Put End O' Rat to work for you today!



END O' RAT

Distributed by

New Holland Supply Co.
New Holland, PA
717-354-2340

Caldwell Supply Co.
West Trenton, NJ
609-882-2223

PROLASSE® 8%

ALL NATURAL PROTEIN

**SAVE MONEY ON FEED COSTS
USE MORE HOME GROWN GRAIN**

Increase production and feed intake with a more palatable ration made with liquid ProLasse on your own farm.

Now for the first time there is a liquid molasses that can be applied with inexpensive metering equipment and any PTO mixer.

New ProLasse's exclusive patented formulation controls the dispersal and penetration of the liquid and assures uniform mixing with no particle segregation. ProLasse also helps prevent molding when using ear corn or other grain with too high a moisture content. ProLasse also contains a stable guaranteed vitamin and mineral package.

Only a small amount of liquid ProLasse is needed to make a sweet feed that is not sticky and will flow freely in Automatic Feeding Systems without bridging.

Sold and distributed by your local feed dealer, mobile grinder mixer operator or liquid supplement dealer.

Telephone collect for name of dealer nearest you.

Manufactured By

FURMAN E. HENDRIX, INC.

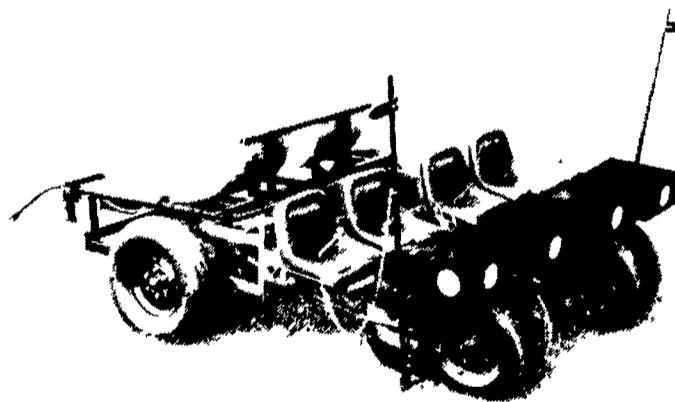
MANUFACTURERS OF
MOPRO LIQUID FEEDS



DISTRIBUTORS OF
REFINERS CANE MOLASSES C.M.S.

SOME FARMER DEALER AREAS AVAILABLE

WHITE HALL, MD. 21161
301-343-0343



"AMERICA'S FINEST TRANSPLANTER"

Designed for the job — Built to last

Mechanical offers the ultimate in transplanting efficiency with its rugged Model 800. It has the features that are a must.

- Multiple row planting 2, 3 or 4 row
- 275 gal. tank (300 poly & 420 optional)
- Hydraulic Cylinder to lift planting units
- Heavy duty welded tubular frame
- All units equipped with patented "Flo Check" valves with Magic air control
- Patented positive action neoprene V-3 Plant Holders.

Cushion Seats and Rubber Packing Wheels Optional

For Smooth, Long-Lasting, Economical Performance Use **MECHANICAL**. A model for every transplanting job.

MULCH LAYERS and PEAT POT PLANTERS AVAILABLE

MECHANICAL TRANSPLANTER COMPANY

1150 S. Central Ave. at U.S. 31, Box 1008B,
Holland, Michigan 49423 Phone 616-396-8738