



A LESSON WELL LEARNED...
LANCASTER FARMING'S CLASSIFIED ADS GET RESULTS!
Phone 717-394-3047 or 717-626-1164

DAIRY EQUIPMENT

For Sale - three 50 lb Surge bucket milkers, elect pulsation Kesco dumping station with hose. Tolan bulk tank with compressor 3700 lbs capacity. Berks Co 215-488-6077

VANCO COZY COWMATS - 48"x72" \$44.95 Call Collect: PH 717-776-3494

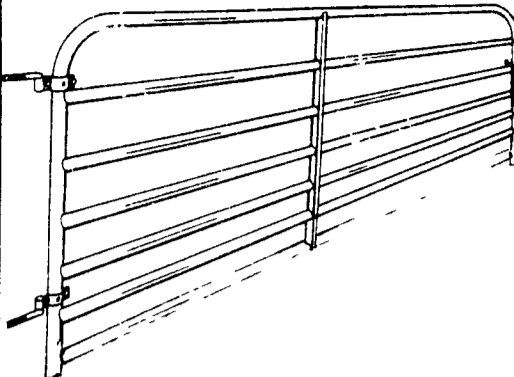
DAIRY EQUIPMENT

1250 gal. OH Mueller milk tank with (2) 3 HP compressors w/washer 5 yrs. old. 804-561-3509 Amelia, VA

40 Jamesway lever action stalls. 10 Jamesway water bowls. Price - best offer 717-653-4086 Lancaster County

DAIRY EQUIPMENT

TUBULAR STEEL GATES



Seven 1-5/8" I.D. horizontal tubes spaced closer at the bottom for a pig tight gate. 50" high with adjustable clamp style hinges. All hardware needed for a complete installation is included. Painted finish.

4' Length	\$36.95	12' Length	\$45.95
6' Length	\$39.95	14' Length	\$2.75
8' Length	\$41.45	16' Length	\$5.50
10' Length	\$43.95		

ZIMMERMAN'S ANIMAL HEALTH SUPPLY

RD 4, Box 141, Lititz, PA 17543
Located 3 miles west of Ephrata, 1/4 mile South of Rt 322 along Wood Corner Road
(717) 738-4241

DAIRY EQUIPMENT

Air & Hydraulic Sales & Service

Air Tools Hydraulic Units
Air Compressors Motors & Pumps
Gast Air Motors Dryden Oil

Dairy Equipment & Supplies

DeLaval & Westfalia
* Sputnicks * Herdex-Breeding
* Dumping Stations * Charts
* Pail Milkers * Allflex Ear Tags
* Vacuum Pumps

I will try to repair all makes & models you might have

ELAM S. STOLTZFUS
RD 1 Coopers Dr.
Kirkwood, Pa.

DAIRY EQUIPMENT

For Sale - Hill 5 door upright display freezer with 5 h.p. 3 phase compressor, 6 years old, \$2,500, 75,000 printed screws caps \$200; Sealright container constructing machine for 3 gal. cardboard containers \$75, complete U-shaped checkout counter 10' x 4' with windbreakers \$125; computerized (No. MS1/55) calculator-dialer \$150 Contact Hoffman Farms, Inc. 754-6441 or 754-7751.



(1) Used Bou-Matic Parlor w/8 units
(1) Surge 3" around the barn pipeline
14 Bou-Matic detachers late style, automatic take-offs
(6) Detachers Model 2100 M's with DHIA approved meters

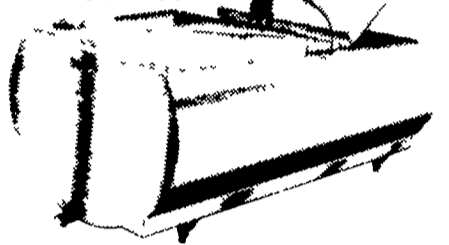
USED TANKS

- 300 Gal. Esco
- 450 Gal. Dari-Kool (round)
- 500 Gal. Mueller
- 545 Gal. Sunset
- 600 Gal. Mojonner
- 600 Gal. Mueller
- 600 Gal. Jamesway
- 600 Gal. "OH" Mueller
- 800 Gal. Mueller
- 800 Gal. Zero
- 850 Gal. Sunset
- 1000 Gal. Girton
- 1500 Gal. Dari-Kool

INSTALLATION - PLANNING
LAYOUT - SALES
SHENK'S FARM SERVICE
501 E. Woods Drive, Box 225
Lititz, PA 17543
Phone 1-717-626-1151

QUEEN ROAD REFRIGERATION

Cooler Sales And Service



When you're thinking of buying a New or Used Bulk Milk Cooler, please call and we will give you a price.

The following list of Used Coolers are available now or in the near future. Call us for date of availability.

USED TANK SPECIALS

- | | |
|----------------------------|-------------------------|
| (1) 300 Gal Zero | (1) 900 Gal OH Mueller |
| (1) 400 Gal Zero | (1) 1000 Gal Sunset |
| (2) 500 Gal Zero | (1) 1000 Gal Zero |
| (1) 600 Gal OH Mueller | (1) 1000 Gal DeLaval |
| (1) 600 Gal SC Milkeeper | (1) 1250 Gal Dari-Kool |
| (1) 600 Gal Milkeeper | (1) 1250 Gal Surge |
| (1) 600 Gal Girton | (2) 1250 Gal DeLaval |
| (1) 600 Gal. Mojonner | (1) 1500 Gal Dari-Kool |
| (1) 800 Gal Sunset | (1) 2000 Gal OH Mueller |
| (1) 800 Gal DeLaval | (1) 2000 Gal Walker |
| (1) 800 Gal Cherry Burrell | (1) 2500 Gal OH Mueller |

USED COMPRESSORS

- 3 HP Lehigh
- 3 HP Tecumseh

Complete Sales & Service

QUEEN ROAD REFRIGERATION

Box 67, Intercourse, PA 17543
Phone: 717-768-9006 or Answering Service - 717-354-4374
★ 24 HOUR SERVICE

'Clip & Save'

POLY DOME CALF NURSERY

"The Igloo"



- How often should you move a wooden hutch?
- How often do you?
- Ours are easy to move yet wind resistant.
- No seams or joints to shelter bacteria.
- FREE Poly Dome Cup With Your Purchase

Call or Write

Earle M. Zimmerman
1478 Colebrook Rd.
Lebanon, PA 17042
1-(717) 272-3558

OR

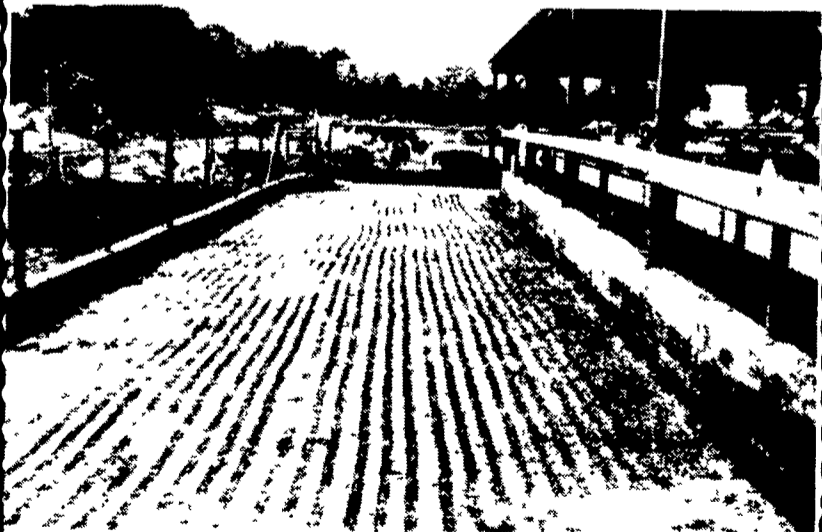
Tim Zimmerman
414 Rowe Road
Shippensburg, Pa.
(717) 532-4183

'Clip & Save'

SAVE VALUABLE COWS FROM FALLS ON SLICK CONCRETE

Scabbling has become the most efficient way to end slick concrete problems. Hundreds and hundreds of farmers have found it both effective and economical.

We have developed the right equipment at the right price with the know-how to back it up.



Now you can rent this equipment and do it yourself or we will contract to do the job for you. Call us collect for more information.

SUBURBAN RENTALS, INC.

Hagerstown, MD
Please call us Collect (301) 790-1303

Now serving a 10-state area



DL-2000™ HIGH PRESSURE CLEANER



CLEAN WITHOUT THE HIGH COST OF STEAM

- Poultry & Hog Houses • Dairy Barns
- Milk Houses • Farm Equipment
- 100 to 2,000 PSI Pressure
- High Quality - Low Maintenance

FREE - Chemical Injection Kit

Stop By And See The DL-2000 Cleaner
Or Call Us For An On-Farm Demonstration

J.B. ZIMMERMAN & SONS

LANCASTER CO.
West of Blue Ball PA on Rt 23
PH: 717-354-4935
Salesman Ralph Stoltzfus
Home Ph (717) 859 3119
Route Trucks To Serve Your Area

LEBANON & DAUPHIN CO.
815 E Main St Annville PA
PH: 717-867-5143
Salesman Arthur Dows
Home Ph (717) 944 6034
Radio Dispatched Trucks

Chop time off your job. Keep your cows healthy.

ding... through windows or doors. The Bale Chopper shreds and blows an entire bale in only seconds and all you do is direct the 180° rotating blower.

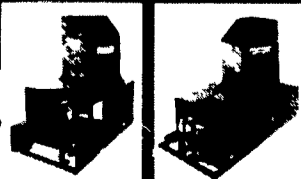
PROMOTE HEALTHIER COWS
Clean, evenly shredded bedding encourages cows to use free stalls, and stall use improves udder health, especially during bitter winter months.

FEED TOTAL MIXED RATION
Use the Bale Chopper to shred hay into mix wagon with grain and silage. Tests have proven TMR feeding results in better herd health and increased production.

To find out more about the time-saving, multi-use Bale Chopper, call today.

Goossen

3-Point Mounted - \$1445
Feed Drop Unit - \$1145
Sale Price - Jan - Feb



Large photo shows Bale Chopper with 3-point tractor mounting and power takeoff. Left insert shows electric feed drop model for conveyor use. Also available with blower and dust collector. Right insert shows gas model.

Glenn W. Rohrer RD 2, Box 325, Lancaster, PA 17603 717-872-6683